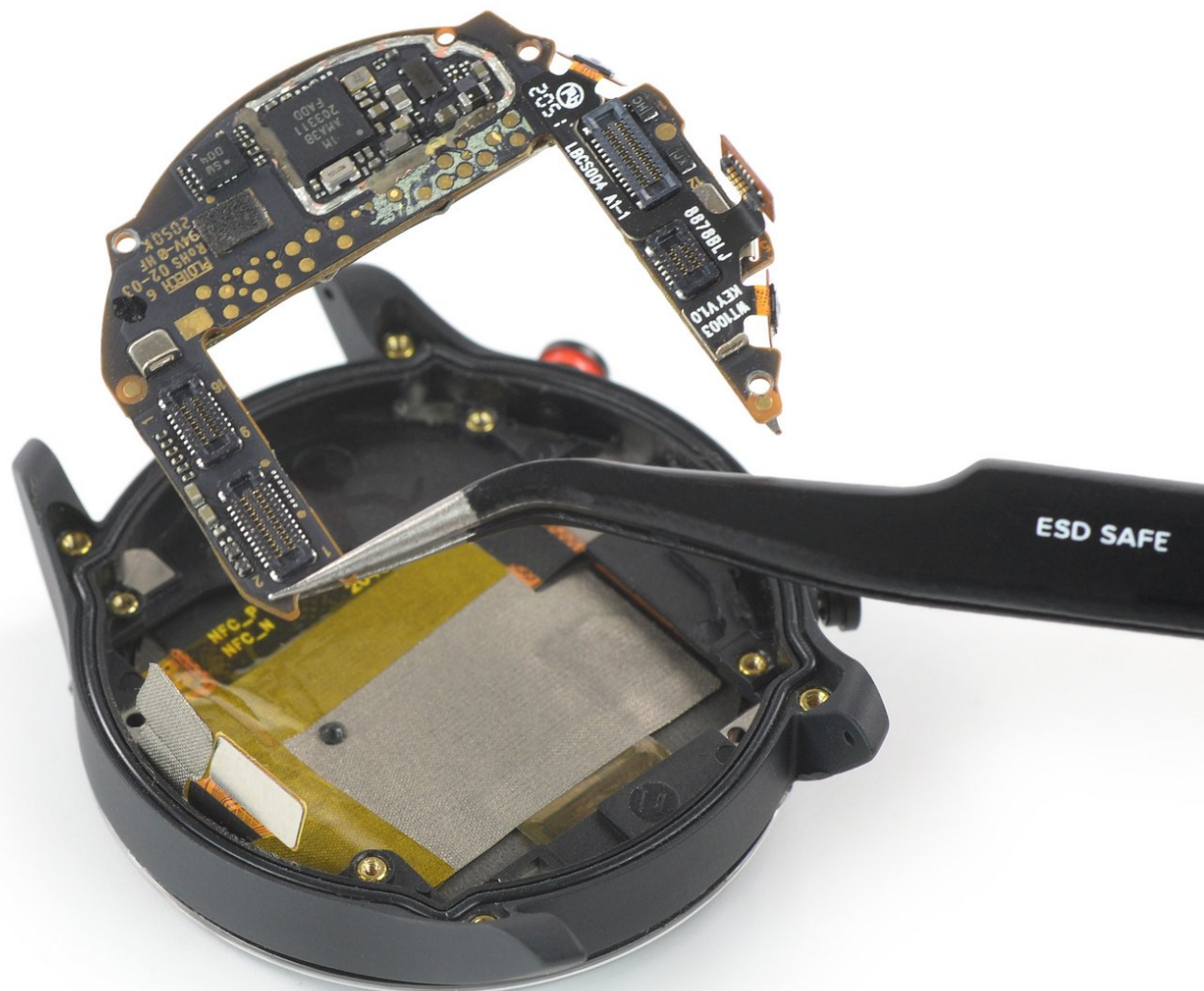




Xiaomi Mi Watch 2021 Motherboard Replacement

How to replace a damaged motherboard in your Xiaomi Mi Watch 2021.

Written By: Dominik Schnabelrauch



INTRODUCTION

Use this guide to replace a damaged motherboard in your Xiaomi Mi Watch 2021.



TOOLS:

- [T3 Torx Screwdriver](#) (1)
 - [Spudger](#) (1)
 - [Phillips #00 Screwdriver](#) (1)
 - [iFixit Opening Picks \(Set of 6\)](#) (1)
 - [Tweezers](#) (1)
-

Step 1 — Unfasten the screws



⚠ Opening the Mi Watch will compromise its waterproof seals. Have replacement seals ready before you proceed past this step, or take care to avoid liquid exposure if you reassemble your watch without replacing the seals.

- Before starting the disassembly, turn off your watch.
- Remove the four 3.2 mm-long T3 Torx screws on the back of the watch.

i A T3 screwdriver has a tight fit on these screws and might require a bit more downward pressure to unfasten the screws. A T2 fits as well but poses the risk to strip the screw heads.

Step 2 — Create a small gap



- Insert the flat end of a spudger into the loudspeaker opening at the top edge of the rear case assembly.
- Push the spudger upwards to create a small gap between the rear case assembly and the watch housing.

Step 3 — Pry up the rear case



- Insert your spudger into the gap and pry up the rear case assembly.

⚠ Only work with the edge of your spudger and do not insert it deeper than 3 mm.

- ⓘ Steady the rear case assembly with a finger to prevent it from suddenly popping open and damaging the flex cable.

⚠ Don't try to remove the rear case assembly all the way yet. It is still connected to the motherboard with a thin flex cable.

Step 4 — Open the watch assembly



- Carefully swing open the rear case assembly by folding the rear case to the side with the watch buttons.

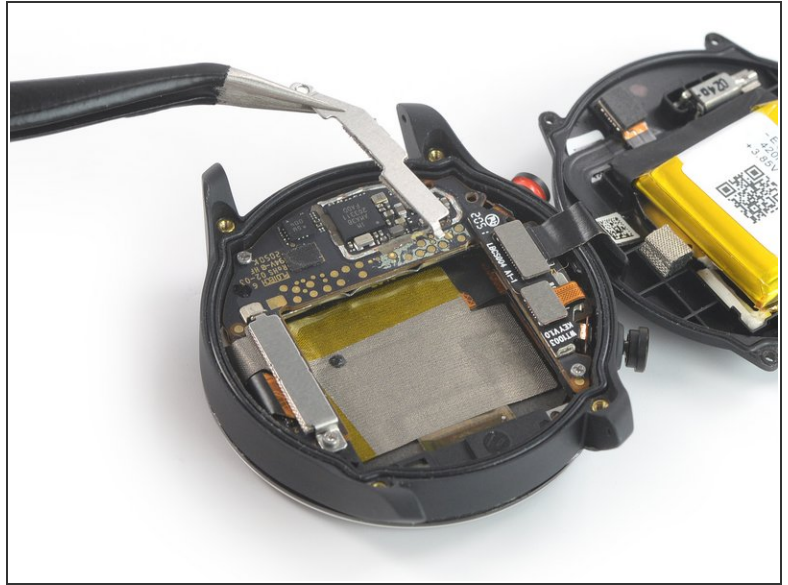
⚠ Avoid straining the flex cable during this procedure.

Step 5 — Unfasten the screw



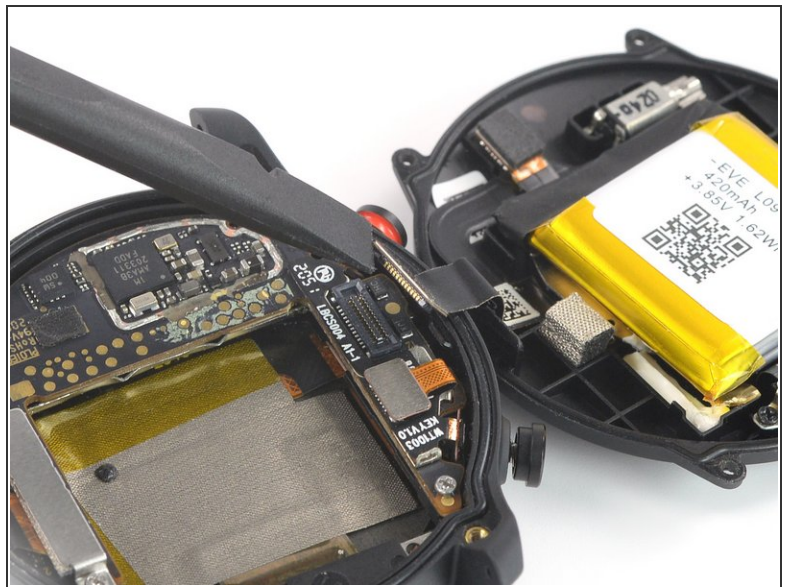
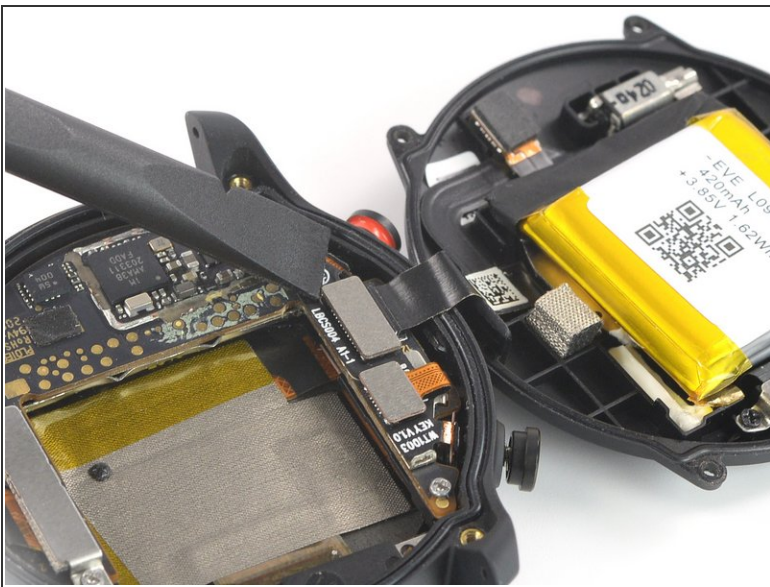
- Remove the 2.7 mm-long Phillips screw securing the metal bracket in the top right corner of your watch.

Step 6 — Remove the metal bracket



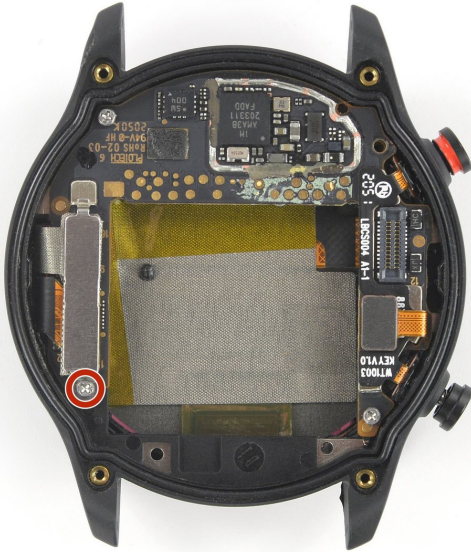
- Use a pair of tweezers to unhook the metal bracket and remove it.
- During reassembly, make sure to [latch the metal bracket](#).

Step 7 — Disconnect the rear case assembly



- Use the flat end of a spudger to pry up and disconnect the rear case assembly flex connector from the motherboard.

Step 8 — Unfasten the screw



- Remove the 2.7 mm-long Phillips screw securing the metal bracket at the bottom left corner of your watch.

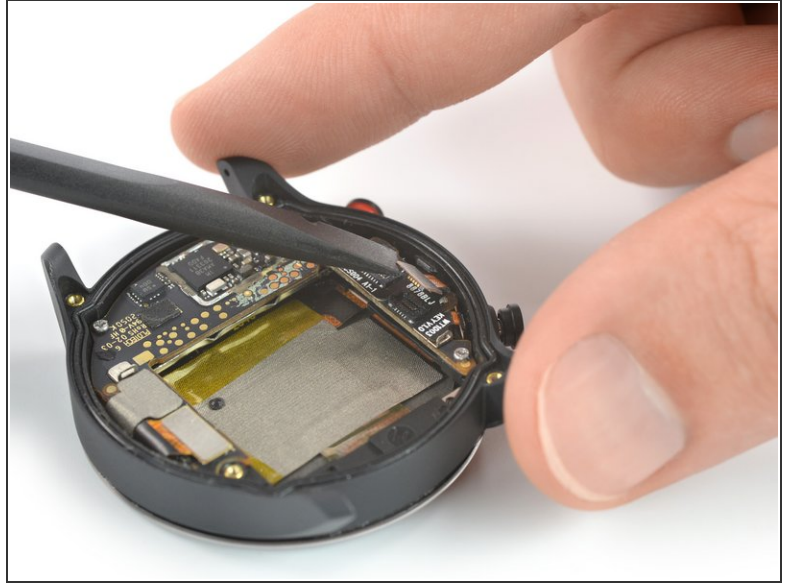
Step 9 — Remove the metal bracket



- Use a pair of tweezers to unhinge the little hook at the upper end of the metal bracket and remove it.

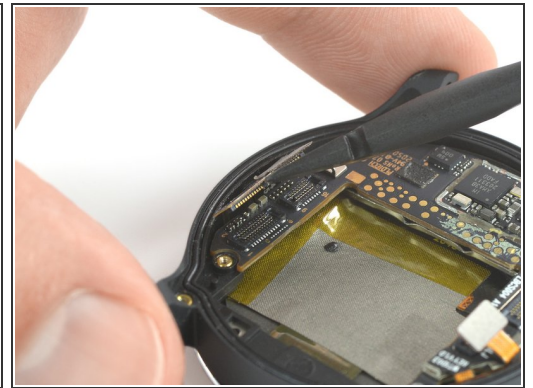
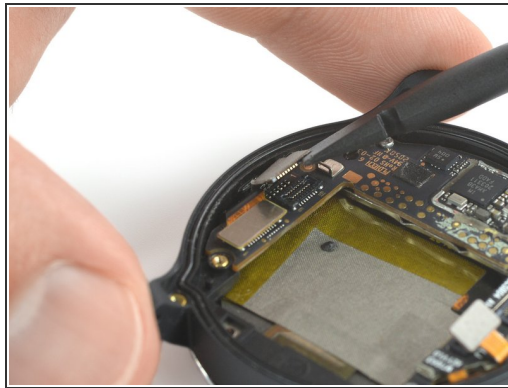
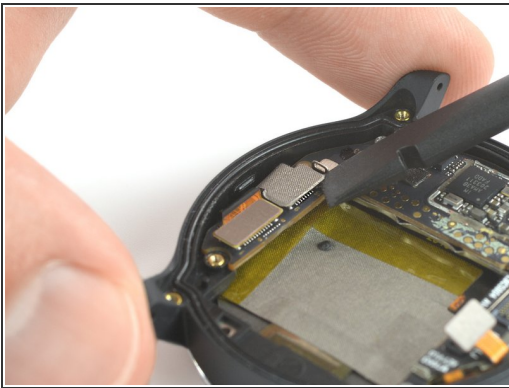
✦ During reassembly, make sure to [latch the metal bracket](#).

Step 10 — Disconnect the watch buttons



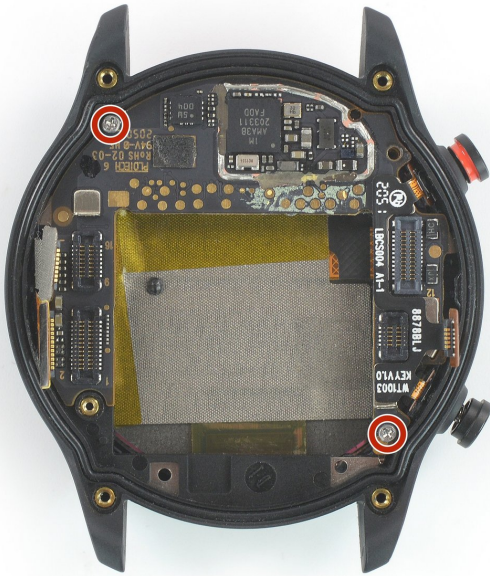
- Use the flat end of a spudger to pry up and disconnect the watch button flex connector.

Step 11 — Disconnect the screen and digitizer



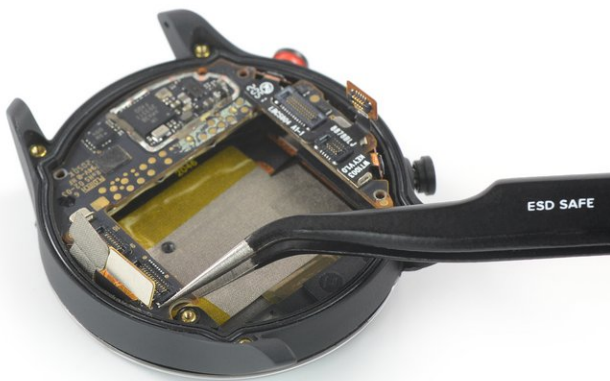
- Use the flat end of a spudger to pry up and disconnect the screen and the digitizer flex connectors.

Step 12 — Unfasten the screws



- Remove the two 2.7 mm-long Phillips screws securing the motherboard.

Step 13 — Remove the motherboard



- Use a pair of tweezers to lift the motherboard out of the watch housing.

⚠ Avoid damaging the surrounding flex cables during this procedure.

If possible, turn on your device and test your repair before resealing.

To reassemble your device, follow these instructions in reverse order.

Take your e-waste to an [R2 or e-Stewards certified recycler](#).

Repair didn't go as planned? Try some [basic troubleshooting](#), or ask our [Answer Community](#) for help.