



# Apple DVI to ADC Adapter Teardown

In this guide, we will only tear the device down revealing the PSU and the logic board free.

Written By: alienozi





## TOOLS:

- [Phillips #00 Screwdriver](#) (1)
-

## Step 1 — Remove Sticker Screw Cover



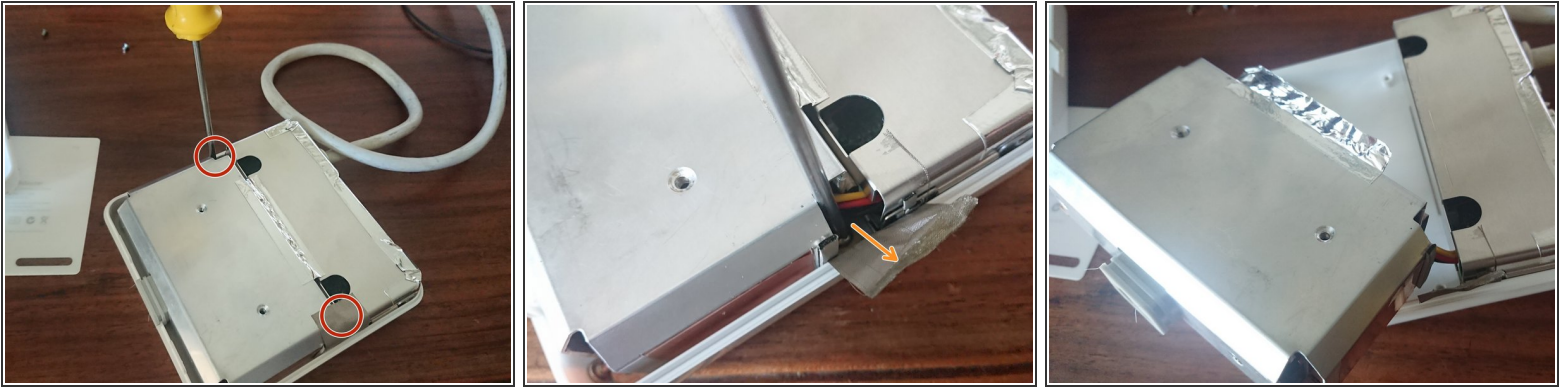
- Turn the device upside down so that the information printed on the back is visible.
- Carefully peel the sticker using a screwdriver from an edge. This will reveal two Phillips screws.

## Step 2 — Bust the Plastic Housing Open



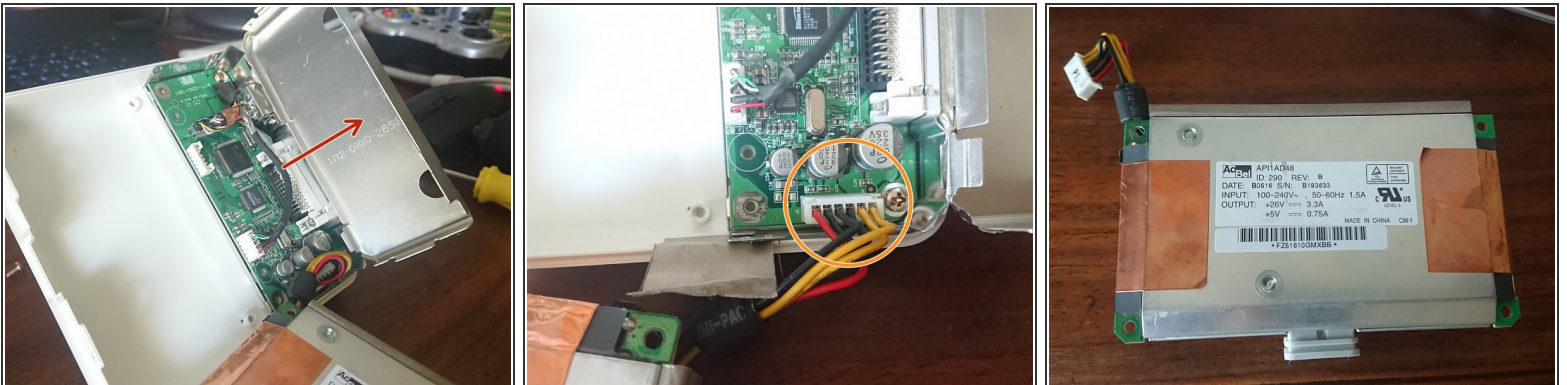
- Begin to open from the cable side. Carefully lift the side up like you would a hinge. The clips should un-clip themselves.
- ⓘ There are plastic clips that hold the casing together on the other side.

### Step 3 — Removing the Shielded PSU



- Remove all four screws on the edges of the PSU.
- ⓘ To remove the last screw, remove the shielding tape.
- ⚠ Be careful not to pull on the PSU too hard. there is a connection to the logic board.
- Carefully peel the shielding tape to release the PSU from it's place

### Step 4 — Release the PSU and Deshield the Logic Board



- Pull the shield towards the cable side and it should pop open. (Some force is required).
- Disconnect the PSU connector.
- PSU is free.



## Step 5 — Removing the Logic Board



- Unscrew the logic board and pull it out