



Apple TV 4K 2021 Siri Remote Battery/Charging Port Replacement

Use this guide to replace a worn-out or dead...

Written By: Adriana Zwink



INTRODUCTION

Use this guide to replace a worn-out or dead battery in your Apple TV 4K 2021 Siri Remote. The charging port and the battery of the Siri Remote are connected as one assembly.

TOOLS:

[P2 Pentalobe Screwdriver iPhone](#) (1)

[iFlex Opening Tool](#) (1)

[iFixit Opening Picks \(Set of 6\)](#) (1)

[Probe and Pick Set](#) (1)

[T3 Torx Screwdriver](#) (1)

[Spudger](#) (1)

Step 1 — Remove the bottom cover



- Use a P2 Pentalobe screwdriver to remove the two 6.1 mm-long screws securing the bottom cover.
- Remove the bottom aluminium cover.

Step 2 — Create a gap



- Insert an iFlex into the gap on the right side of the circular clickpad.
 - ① Insert the iFlex about 3 mm.
- Use the iFlex to create a gap by prying the circular clickpad upwards.

Step 3 — Unhinge the plastic clips



- Insert an opening pick into the gap. Remove the iFlex after inserting the opening pick.
- Slide the opening pick around the top half of the clickpad.
 - ⚠️ Avoid sliding the opening pick to the bottom half of the clickpad. A flex cable runs there!

Step 4 — Remove the clickpad



- Lift the clickpad from the lower right side to access the press connector.
- Use an opening pick to pry up the clickpad connector to disconnect it.
- Remove the clickpad.

Step 5 — Remove the face buttons



- Insert the iFlex into the gap on the right edge of the volume button.
 - Insert the iFlex about 3 mm.

Step 6 — Unhinge the volume button



- Use the iFlex to pry up the volume button to unhinge the plastic clips which keep the button in place.
- Remove the volume button.

Step 7



- Insert an angled probe into the housing to release the right plastic clip of the mute button.
- Carefully push against the buttons clip from the inside.

⚠ Make sure that the probe doesn't hit any components on the mainboard and is inserted horizontally.

Step 8



- Insert the probe into the gap on the surface of the mute button.
- Use the probe to pry up the mute button and unhinge the remaining plastic clips.
- Remove the mute button

Step 9



- Insert a probe into the case to release the right plastic clip of the play/pause button.
- Gently press against the clip from the inside.

⚠ Make sure that the probe doesn't hit any components on the mainboard and is inserted horizontally.

Step 10



- Insert the probe into the gap on the surface of the play/pause button.
- Use the probe to pry up the play/pause button and unhinge the remaining plastic clips.
- Remove the play/pause button.

Step 11



- Insert the probe into the housing where the clickpad was previously to release the upper plastic clip of the back button.
- Carefully press against the clip from the inside.

⚠ Make sure that the probe doesn't hit any components on the mainboard and is inserted horizontally.

Step 12



- Insert the probe into the gap on the surface of the back button.
- Use the probe to pry up the back button and unhinge the remaining plastic clips.
- Remove the back button.

Step 13



- Insert the probe into the inner housing where the clickpad used to be to release the upper plastic clip of the TV button.
- Carefully press against the clip from the inside.

⚠ Make sure that the probe doesn't hit any components on the mainboard and is inserted horizontally.

Step 14



- Insert the probe into the gap on the surface of the TV button.
- Use the probe to pry up the TV button and unhinge the remaining plastic clips.
- Remove the TV button.

Step 15 — Remove the Siri button



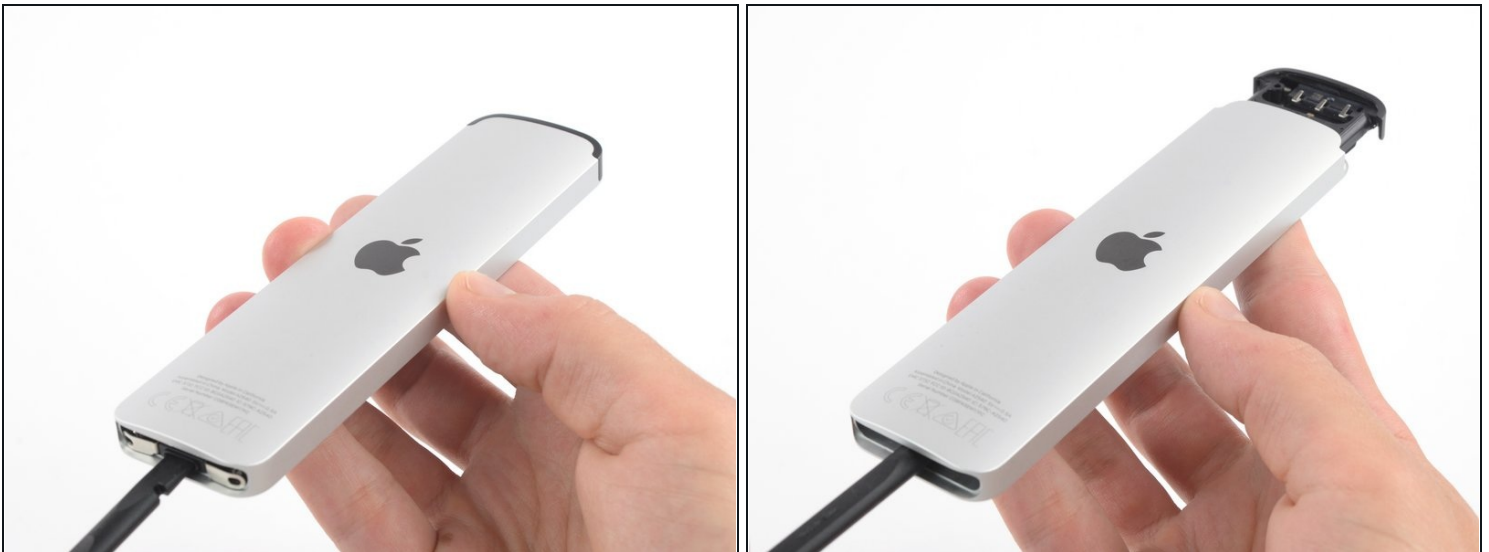
- Use a T3 Torx screwdriver to remove the two 4.7 mm-long screws securing the Siri button on the right edge of the remote.

Step 16



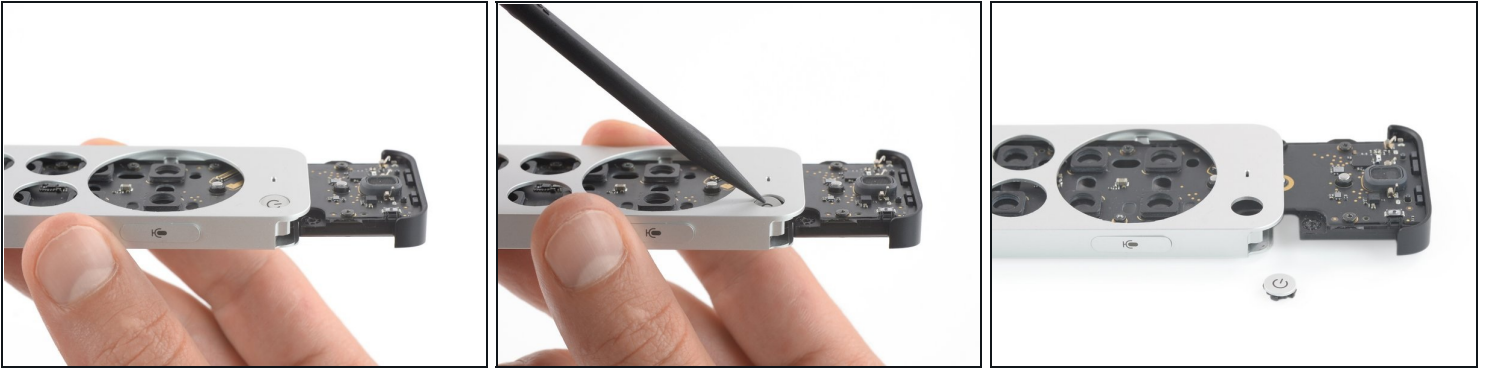
- Use the pointed end of a spudger or a pair of [tweezers](#) to lift the Siri button up and out of the remote.
- Remove the Siri button.

Step 17 — Push the internal frame slightly out of the housing



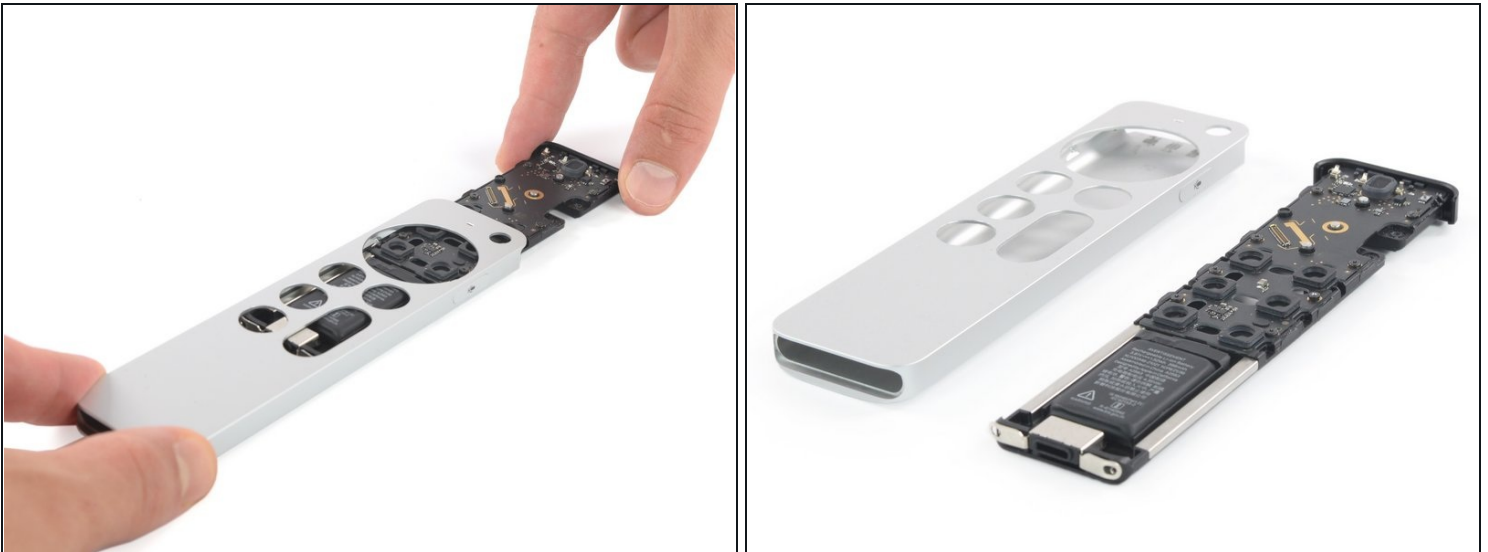
- Turn the remote upside down.
 - ⓘ This will avoid the power button falling into the case and getting jammed.
- Insert the flat end of a spudger into the charging port.
 - ⓘ Don't worry! This won't damage the port.
- Push the spudger in to slide the insides of the remote out about 1 inch (2.5 cm).
⚠ Don't try to push it all out yet! The power button needs to be removed first.

Step 18 — Remove the power button



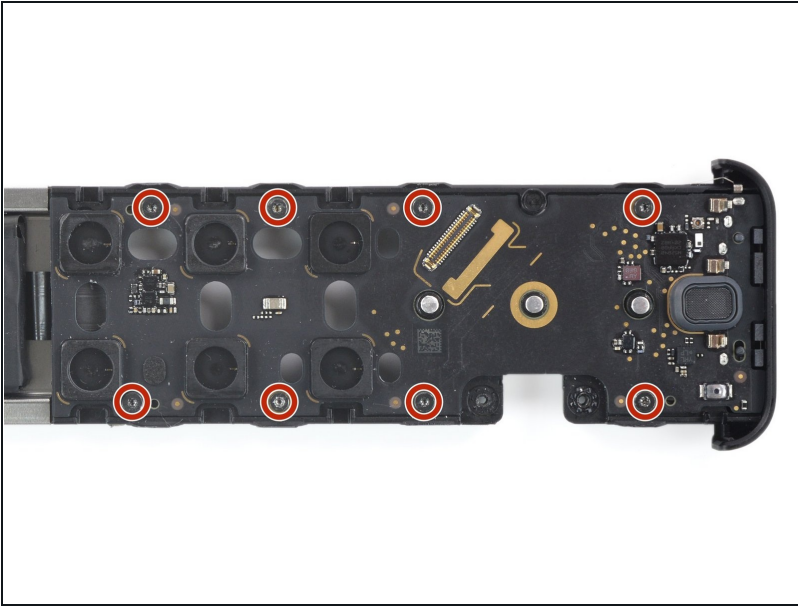
- Turn the remote back over and make sure that the [recess](#) of the inner frame aligns with the power button.
- Use the pointed end of a spudger to press the power button into the recess of the inner frame (if it didn't already fall in by itself).
- Remove the power button.

Step 19 — Remove the internal frame from the housing



- Pull the inner frame out of its aluminum housing.
- ⓘ There is a slight resistance when pulling out.

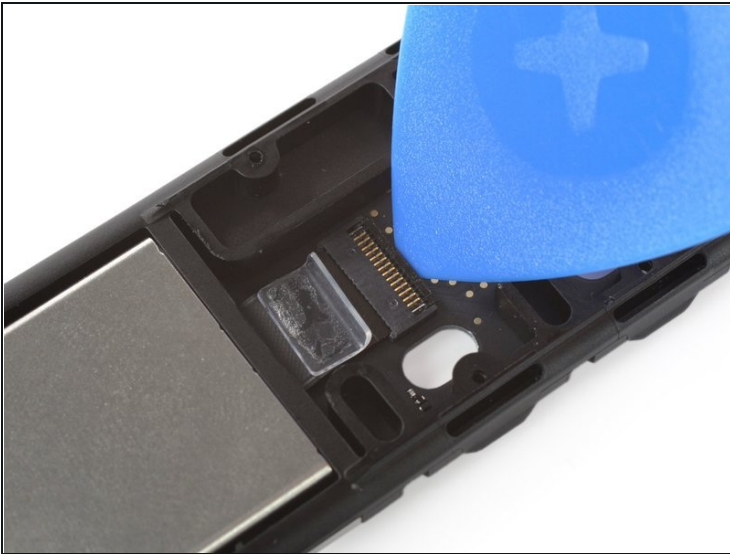
Step 20 — Unscrew the mainboard



- Use a Torx T3 screwdriver to remove the eight 4.7 mm-long screws securing the mainboard to the frame.

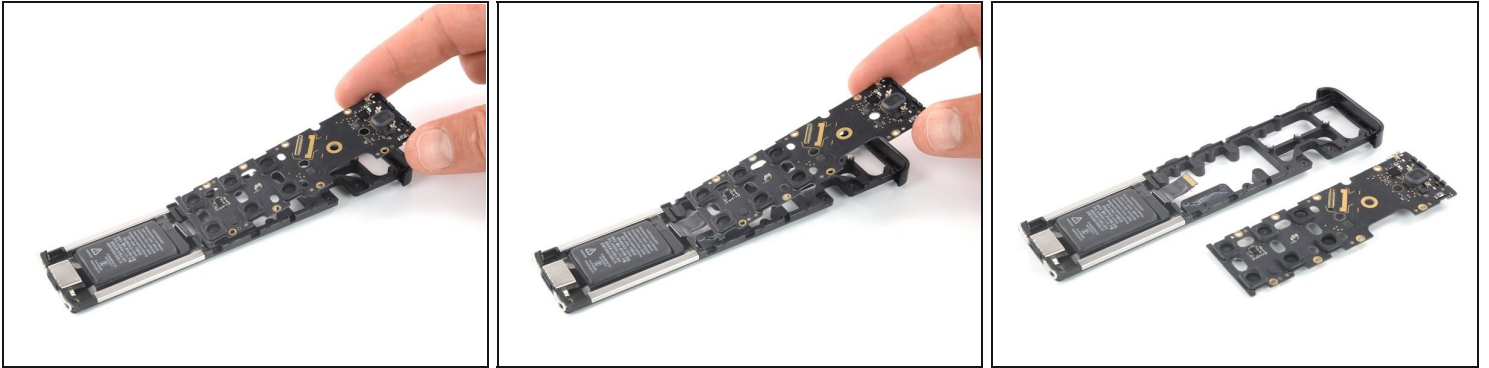
⚠ Don't try remove the mainboard all the way yet. It's still connected to the battery!

Step 21 — Disconnect the battery assembly



- Turn over the frame.
- Use an opening pick to lift up the small locking flap on the trackpad cable's [ZIF connector](#).

Step 22 — Remove the mainboard



- Lift the mainboard up and away from the battery to remove it.

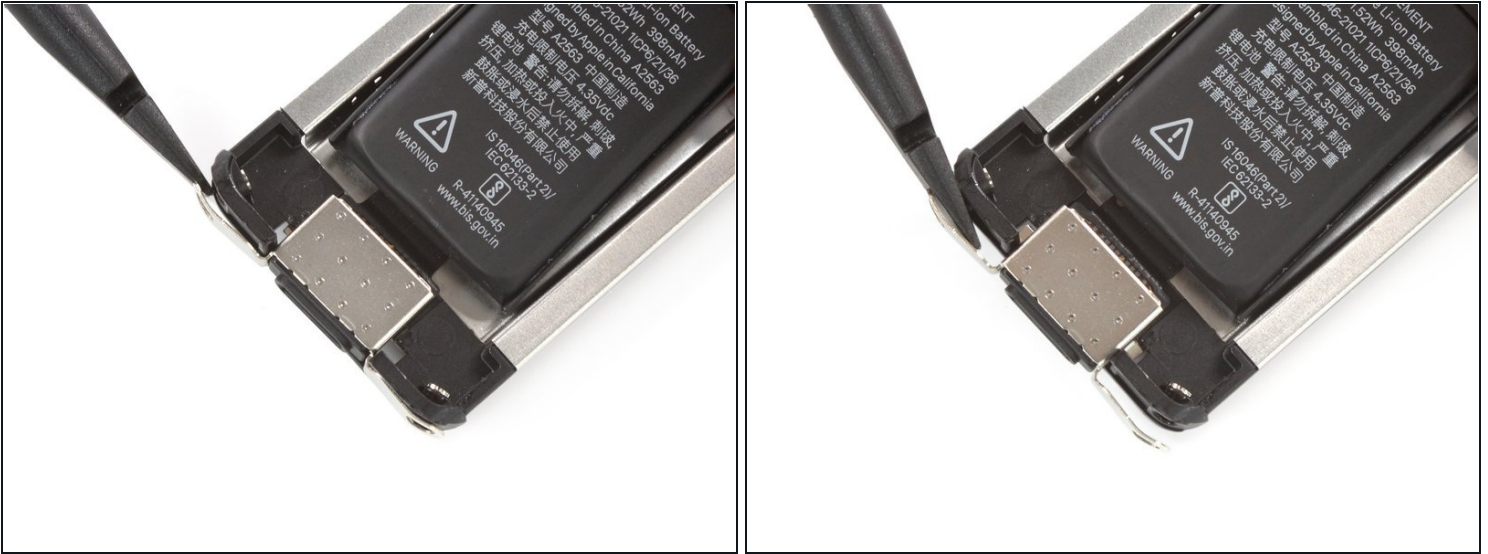
Step 23 — Pry up the battery



ⓘ The battery is held down by mild adhesive.

- Insert an opening pick on either side of the battery and pry up to lift it away from its recess.
 - ⚠ Make sure you push underneath the battery and not into it. Don't bend or deform the battery
 - ⚠ Don't try to remove the battery all the way yet! The charging port is still entangled with the frame.

Step 24 — Release the charging port assembly



- Use the flat end of a spudger to shift the battery port assembly towards the bottom of the frame to free the metal clips holding it in place.

Step 25 — Remove the battery and charging port assembly



- Remove the battery and charging port assembly.

Compare your new replacement part to the original part—you may need to transfer remaining components or remove adhesive backings from the new part before installing.

To reassemble your device, follow the above steps in reverse order.

Take your e-waste to an [R2 or e-Stewards certified recycler](#).

Repair didn't go as planned? Check out our [Answers community](#) for help.