



HP EliteBook 1050 G1 Keyboard Panel Replacement

This guide will show the reader how to replace...

Written By: Ming-chin Wu



INTRODUCTION

This guide will show the reader how to replace the keyboard panel on the HP EliteBook 1050 G1. The keyboard panel is used to type letters on the computer screen. The keyboard replacement is not very difficult, so it has been labeled as "easy", and this task only takes about 10 minutes to complete. To prevent any danger, the battery has been removed. The tools required are shown in the section named "what you need" located to the right of the introduction.

TOOLS:

Phillips #00 Screwdriver (1)

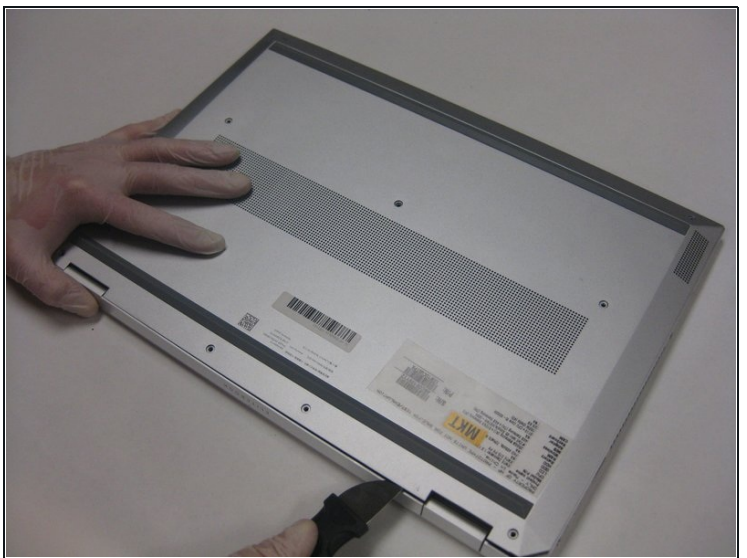
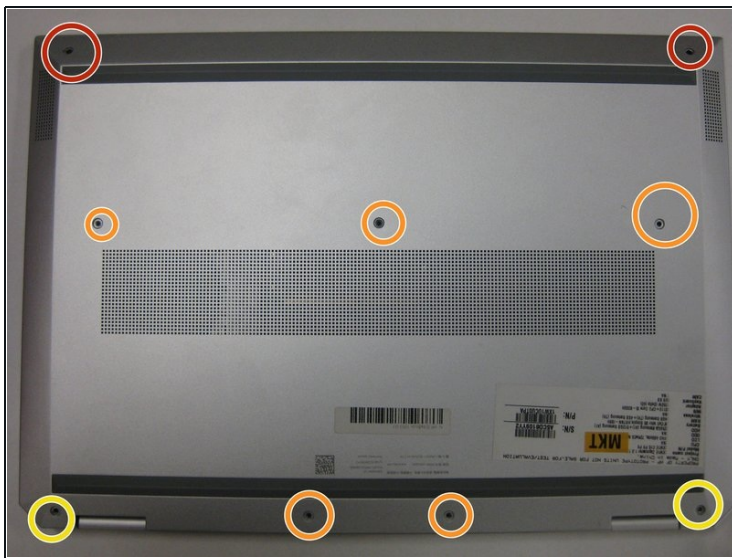
Spudger (1)

iFixit Opening Tool (1)

TR8 Torx Security Screwdriver (1)

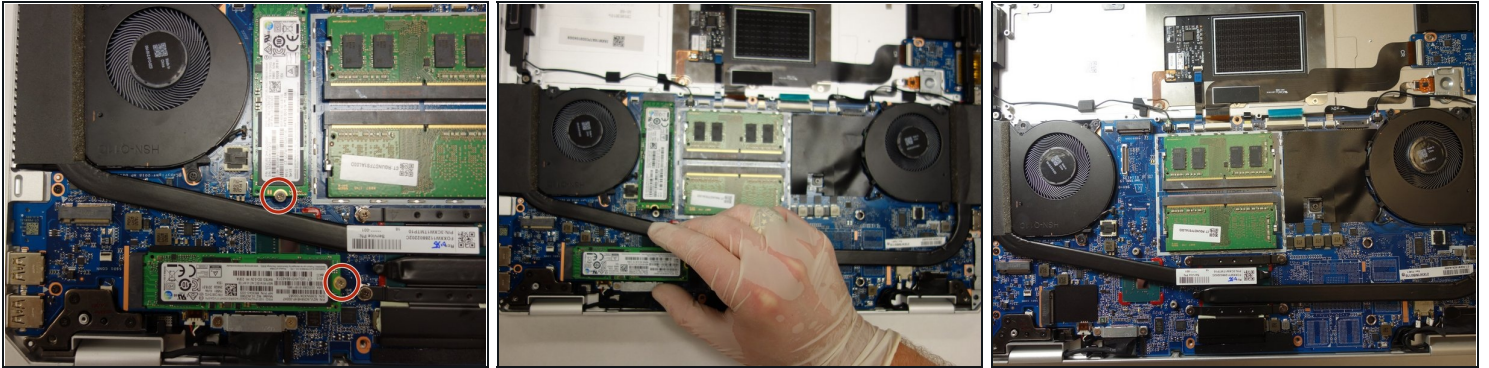
J00 JIS Screwdriver (1)

Step 1 — Motherboard



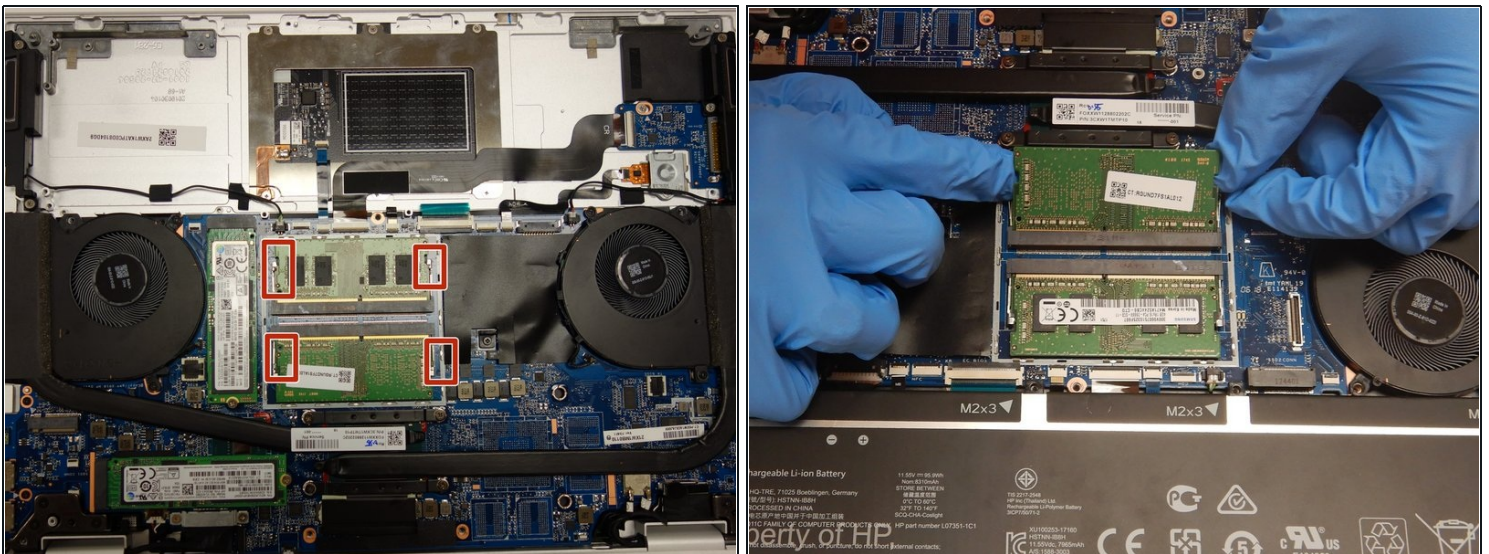
- Remove the two 5.5mm screws with a Torx T8 driver.
- Remove the five 8.7mm screws with a Torx T8 driver.
- Remove the two 6.6mm screws with a Torx T8 driver.
- Pry open the backplate with a Jimmy.

Step 2



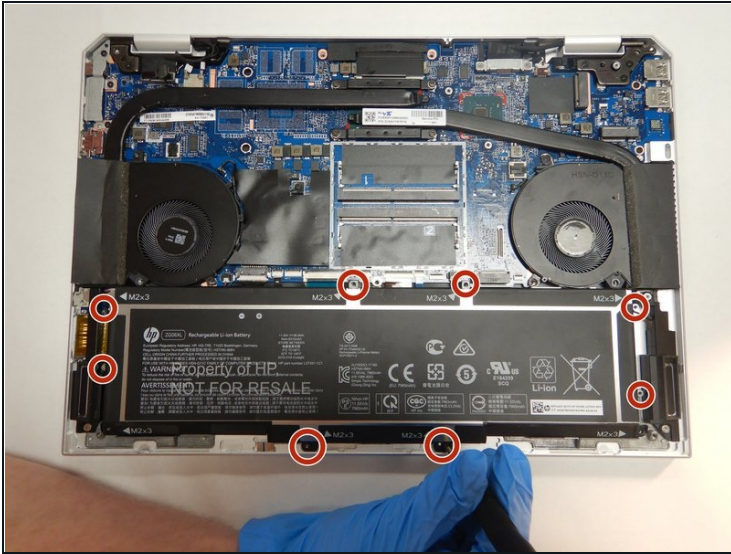
- Remove the two 1.9mm screws from the SSDs with a Phillips #0 driver.
- Disconnect the two PCIe SSDs by sliding them out of each port.

Step 3



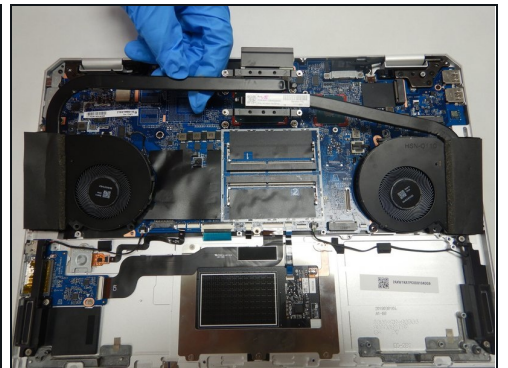
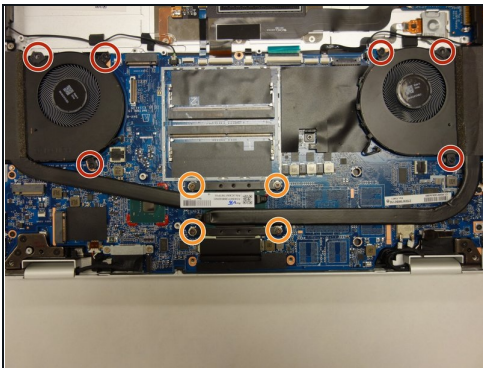
- Pull the clips on either side of the RAM chip away from each other using your fingers.
 - ① As you pry apart the clips, the RAM should pop up to rest at an angle to the motherboard.
- Slide the RAM chips out of their respective slots.

Step 4



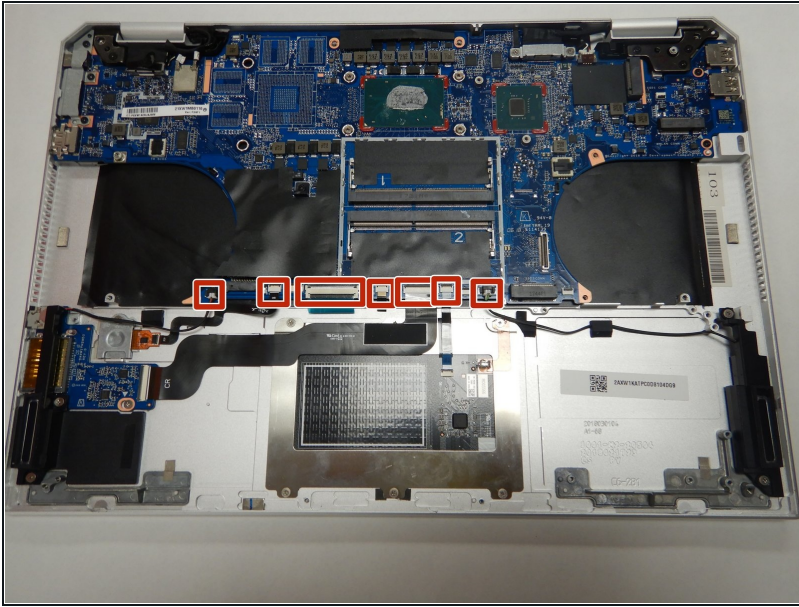
- Remove eight 4.5 mm screws from the battery with a Phillips #1 screwdriver.
- Disconnect the white tipped battery cable from the motherboard.

Step 5



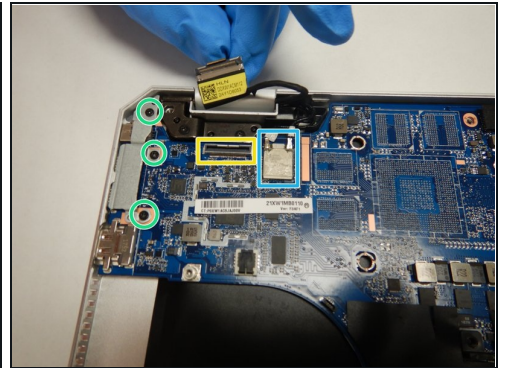
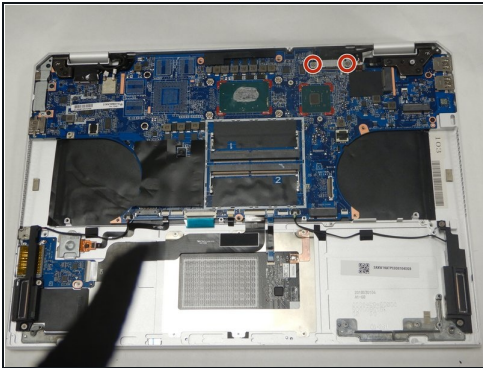
- Remove the six 4.5mm screws from the fan assembly using a Phillips #00 screwdriver.
- Unscrew four 3.6mm screws from the heatsink assembly with a Phillips #00 screwdriver.
 - ⓘ These "captive" screws are connected to the heatsink and will not detach from it.
- Remove the fan assembly.

Step 6



- Unplug the seven ZIF connectors from the motherboard by flipping up the black switches with a spudger and pulling out the cables.

Step 7



- Remove two 1.9mm screws from the display cable bracket using a Phillips #00 driver.
- Remove the two connectors on the right side gently.
- Remove the connector on right side of motherboard.
- Remove the three 4.5mm screws using a Phillips #00 driver and remove the bracket.
- Remove the two coaxial cables.

Step 8



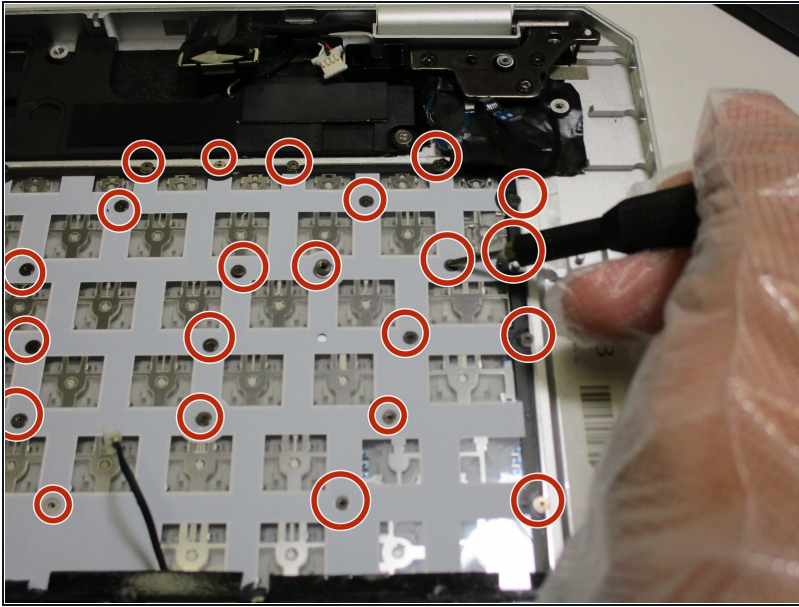
- Remove the two 3mm screws using a Phillips #00 driver.
- Remove the motherboard by lifting it up and out of the case.

Step 9 — Keyboard Panel



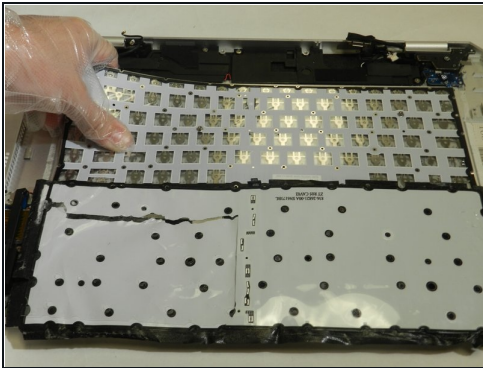
- Peel back the black cover on the keyboard.

Step 10



- Remove all 52 screws from the keyboard panel using a Phillips #000 screwdriver.

Step 11



- Remove the keyboard panel from the laptop.

To reassemble your device, follow these instructions in reverse order.