



# Samsung Galaxy Buds Live Battery Replacement

How to replace a worn-out or dead battery in your Samsung Galaxy Buds Live.

Written By: Adriana Zwink



## INTRODUCTION

Use this guide to replace a worn-out or dead battery in your Galaxy Buds Live. The photos for this guide were taken with the left earbud, but the procedure is the same for both buds.

Galaxy Buds Live are rated IPX2 for ingress-resistance, meaning they are splash resistant. After this repair, they may lose their water protection.



### TOOLS:

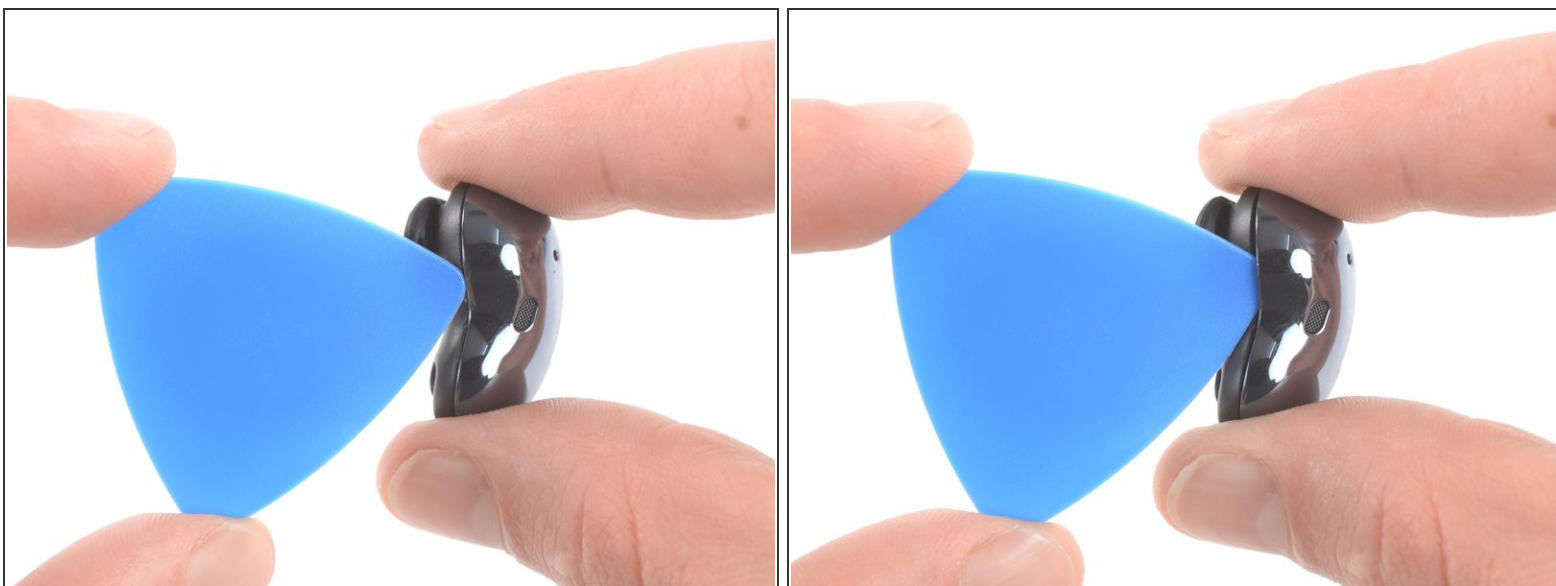
- [Spudger](#) (1)
- [iFixit Opening Picks \(Set of 6\)](#) (1)
- [Phillips #00 Screwdriver](#) (1)




### PARTS:

- [Samsung Galaxy Buds Replacement Batteries](#) (1)

## Step 1 — Insert an opening pick



 If possible, discharge your Galaxy Buds Live before replacing the battery.

- Place the tip of an opening pick between the plastic cases on the curved inside of the earbud.
- Insert the pick at a steep angle.

## Step 2 — Loosen the case



- Keep the opening pick at a steep angle and slide it along the top to loosen the case.

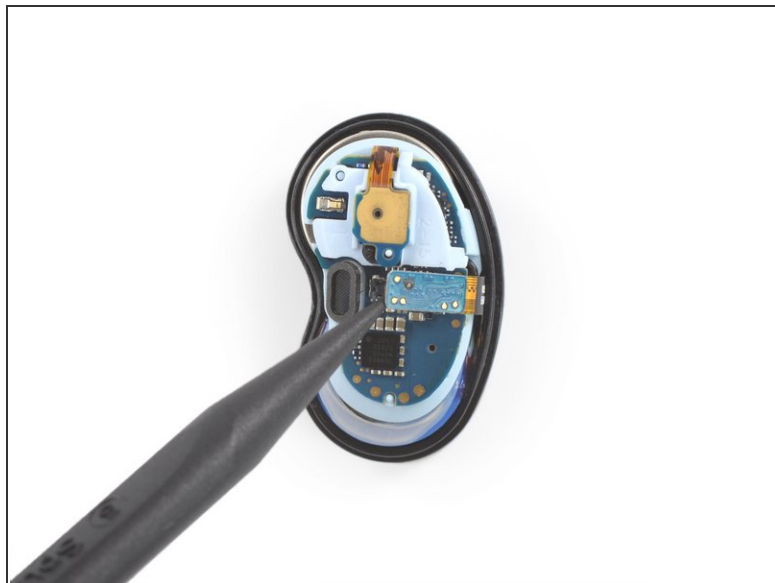
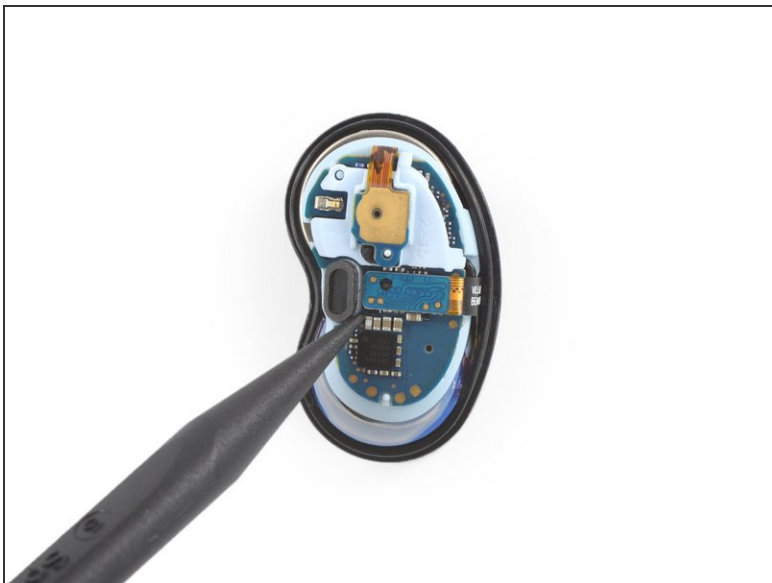
⚠ Take your time and do your best not to deform the plastic.

## Step 3 — Remove the case



- Remove the case.

## Step 4 — Disconnect the main connector



- Use the pointed end of a spudger to lift up and disconnect the main connector.

## Step 5 — Remove the motherboard



- Use a spudger to gently lift up the motherboard.
- Remove the motherboard.

## Step 6 — Unscrew the plastic frame



- Use a Phillips screwdriver to remove the 3.4 mm-long screw which is securing the plastic frame.

## Step 7 — Remove the plastic frame



- Use a spudger or your fingers to remove the plastic frame by pulling it upwards.



## Step 8 — Clear the battery



- Use the pointed end of a spudger to slightly lift up the speaker driver obscuring the battery.

**⚠** The driver is held in place with light adhesive. Work carefully and don't tug on anything too hard.

## Step 9 — Pry up the battery



**i** The battery is held in place by a mild adhesive.

- Insert the pointed end of a spudger underneath the battery.
- Use constant, steady pressure to pry the battery up.

## Step 10 — Remove the battery



- Remove the battery.

⚠ Do not reinstall a damaged battery, as doing so is a potential safety hazard.

To reassemble your device, follow these instructions in reverse order.

For optimal performance, **calibrate your newly installed battery**: Charge it to 100% and keep charging it for at least 2 more hours. Then use your device until it shuts off due to low battery. Finally, charge it uninterrupted to 100%.

Take your e-waste to an [R2 or e-Stewards certified recycler](#).

Repair didn't go as planned? Try some [basic troubleshooting](#), or ask our [Answers community](#) for help.