



iHome IH11 AC Power Adapter Replacement

This guide will show you how to replace the AC adapter, the port where you plug your power cord into the iHome.

Written By: Nick Knowles



INTRODUCTION

Use this guide to remove the AC power adapter. For help troubleshooting click the link to our troubleshooting page [iHome IH11 Troubleshooting](#).



TOOLS:

- [Soldering Workstation](#) (1)
- [Phillips #1 Screwdriver](#) (1)



PARTS:

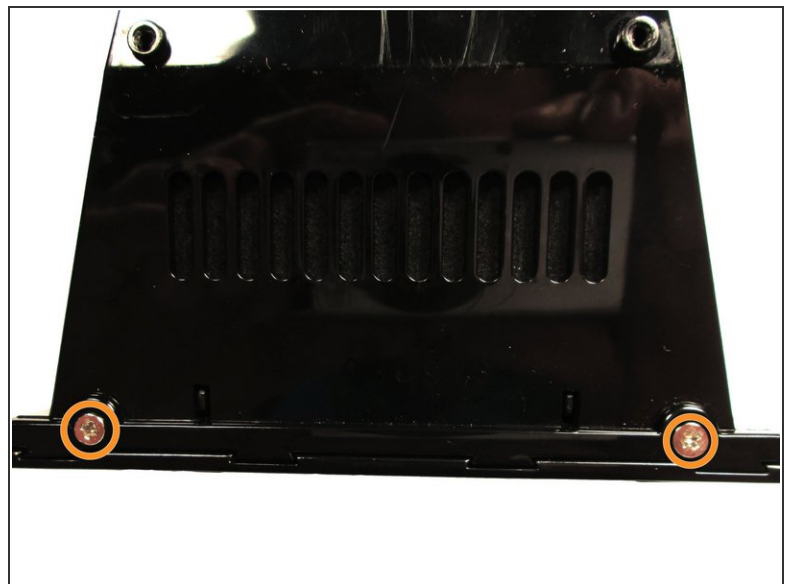
- [iHome iP11 AC adapter](#) (1)

Step 1 — Outer Case



- Unscrew the two 9.0 mm screws with the Phillips #1.
- Remove the translucent bottom plastic piece.

Step 2

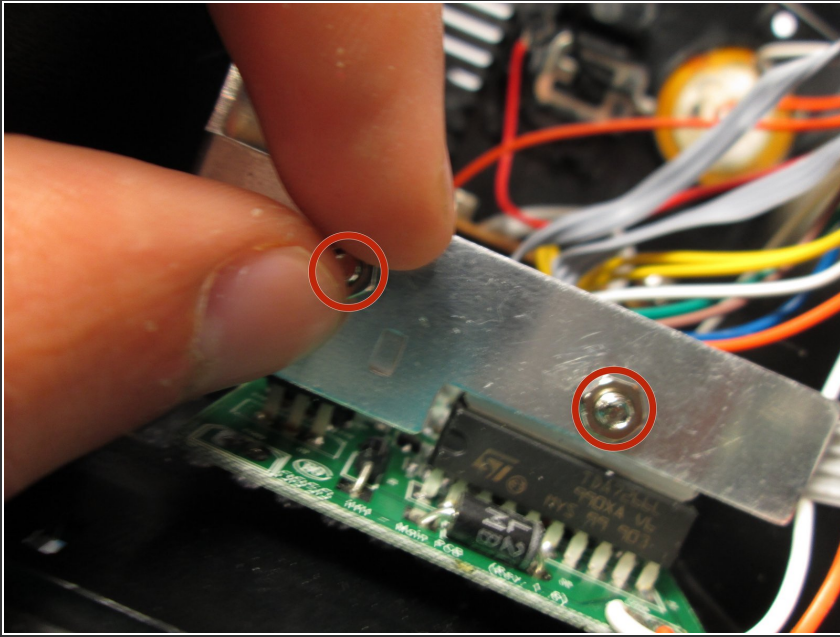


- Remove the two 9.0mm screws on the back of the iHome with the Phillips #1 screwdriver.
- Repeat the previous step for the two 9.0mm screws on the bottom.



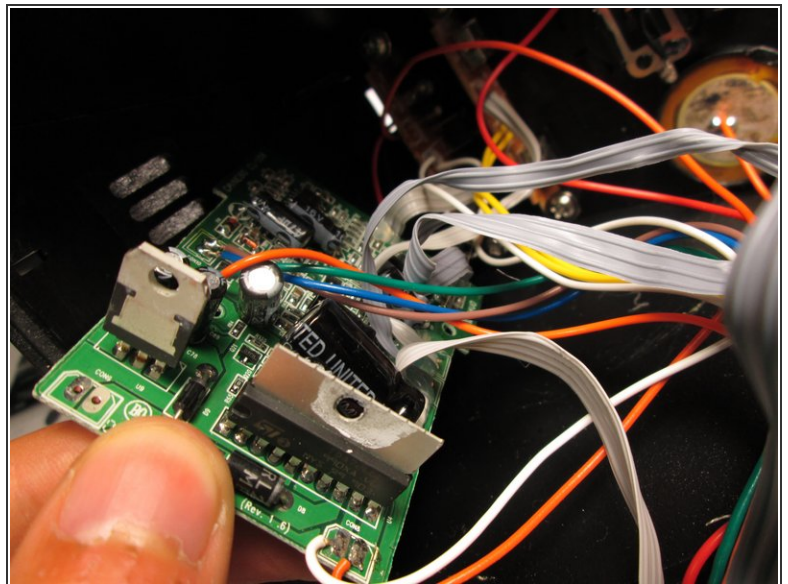
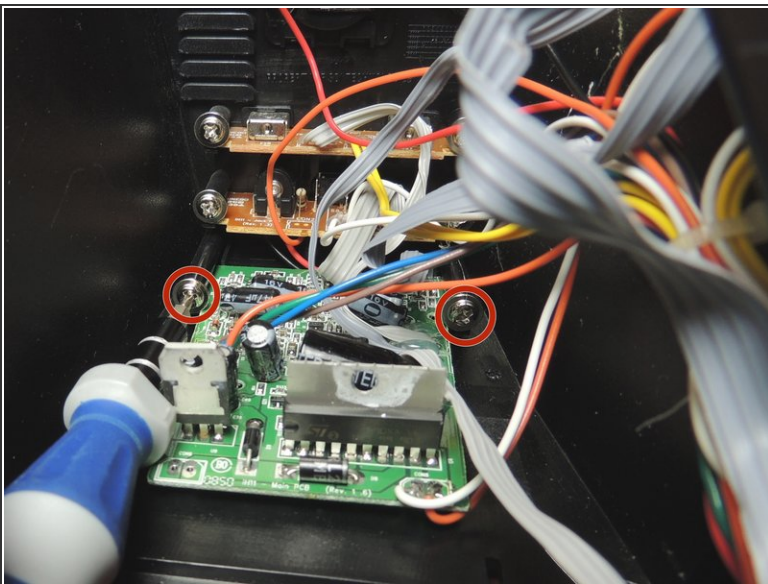
Carefully slide the back cover off. There are wires attached to the back cover.

Step 3



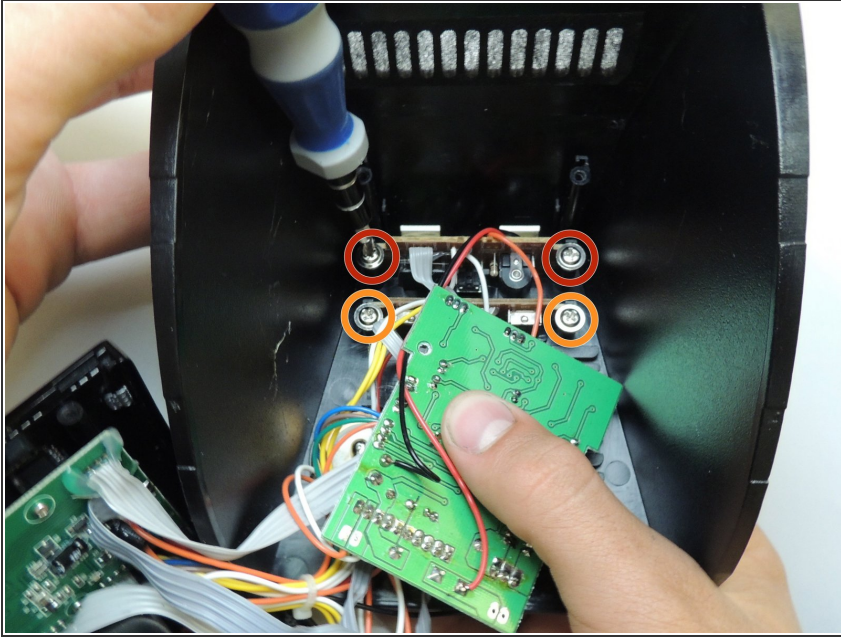
- Remove the aluminum bracket by loosening the two nuts and removing the 8.0mm bolts with your hand.

Step 4 — Motherboard



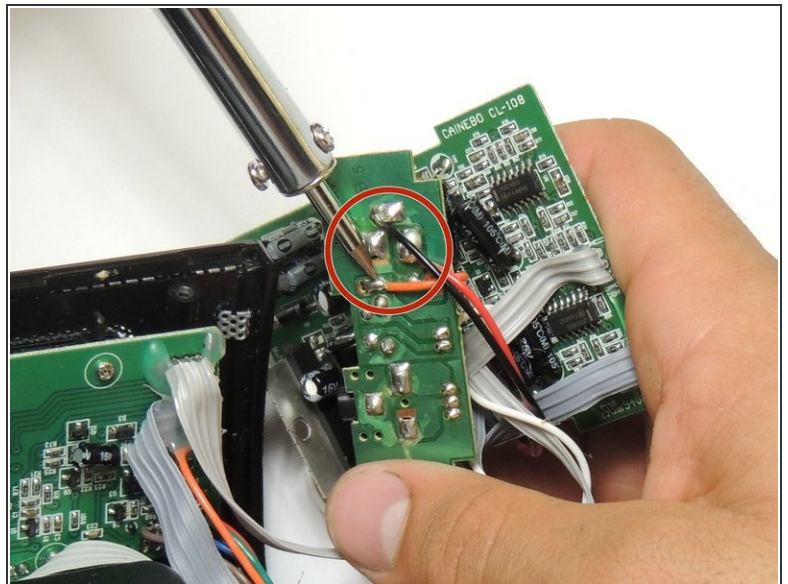
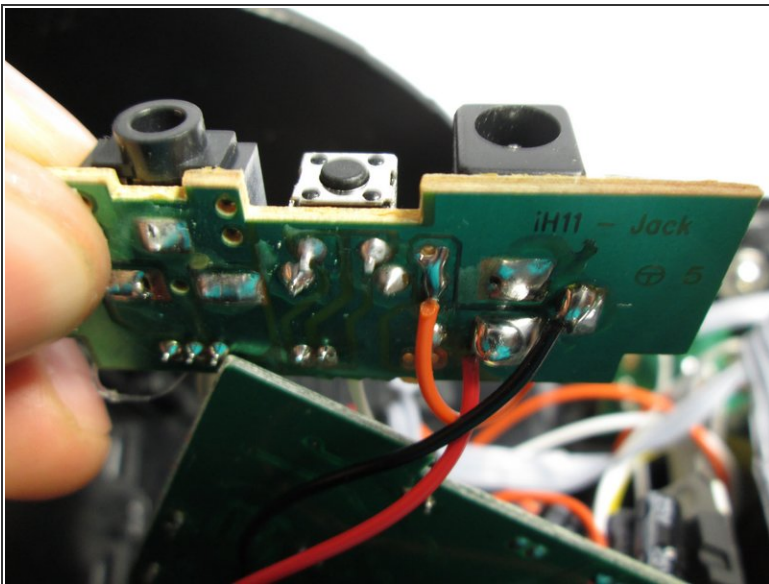
- Remove the two 12.0mm screws that hold the motherboard with the Phillips #1 screwdriver.
- Slide the motherboard gently out.

Step 5



- Remove the two 9.0 mm screws with the Phillips #1 screwdriver, then slide the circuit board for the AC adapter out.
- Repeat the previous step by removing the two 9.0mm screws with the Phillips #1 screwdriver for the circuit board for the on/off switch.

Step 6



- Unsolder the main connections holding the AC adapter to the circuit board.
- Solder new adapter in same position with same connections.

To reassemble your device, follow these instructions in reverse order.