



Lopping Shears Wolf RS 870 Vario Knife and Anvil Replacement

Replacing the wearing parts on a Wolf Garten manual lopping shear

Written By: HowThingsWork



INTRODUCTION

In these instructions, the replacement of the knife and anvil is shown. To avoid changing the alignment, it is recommended that you first replace one component and retighten the screws before replacing the second component.

If the nicks in the knife and/or anvil are not too deep, you can of course remove the parts and regrind them yourself.

The screws and bushings can also be reordered as spare parts, e.g. if the hexagon socket has been rounded.



TOOLS:

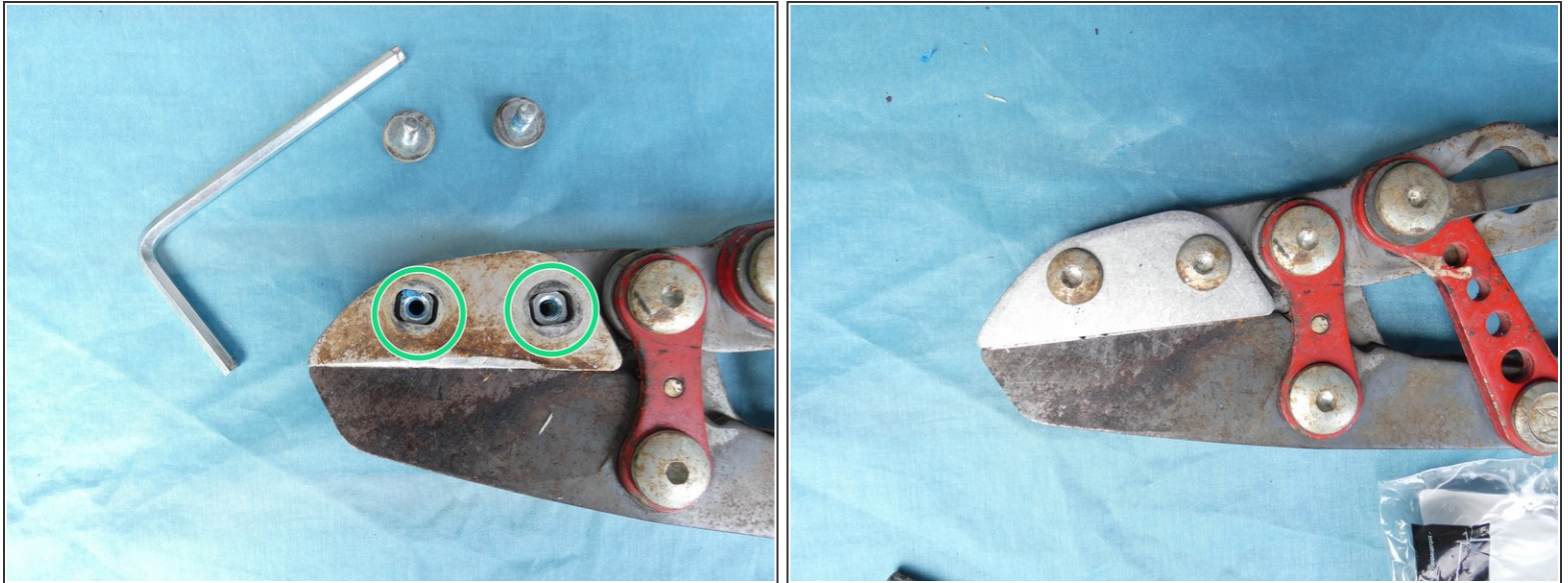
- [5 mm Hex Key](#) (1)



PARTS:

- [New Item](#) (1)
- [New Item](#) (1)
- [New Item](#) (1)

Step 1 — Knife and anvil



- Loosen the two 5 mm hexagon socket screws on the anvil. They are quite tight due to the threadlocker. Make sure that the wrench is correctly seated in the screw.
- Lift the anvil up and insert a new one.
- Close the shears so that there is no gap between the blade and the anvil and tighten the screws. Optionally, you can use some new threadlocker varnish.

Step 2



- To replace the blade, loosen these two 5 mm Allen screws. These are also quite tight due to locking varnish.
- The screw marked in red has a round collar. Put them back in the right place.
- Pull out the counter bushings downwards and remove the knife with the lever (called a *Koppe*)
- Make sure that the new blade rests against the anvil without a gap and reinsert the bushings. Replace the screws and make sure that the ring of the tie rod is centered in the round screw collar. Tighten both screws. If necessary, you can use a little threadlocker varnish.

If you did not use a thread locker, check after use to see if the screws have loosened.