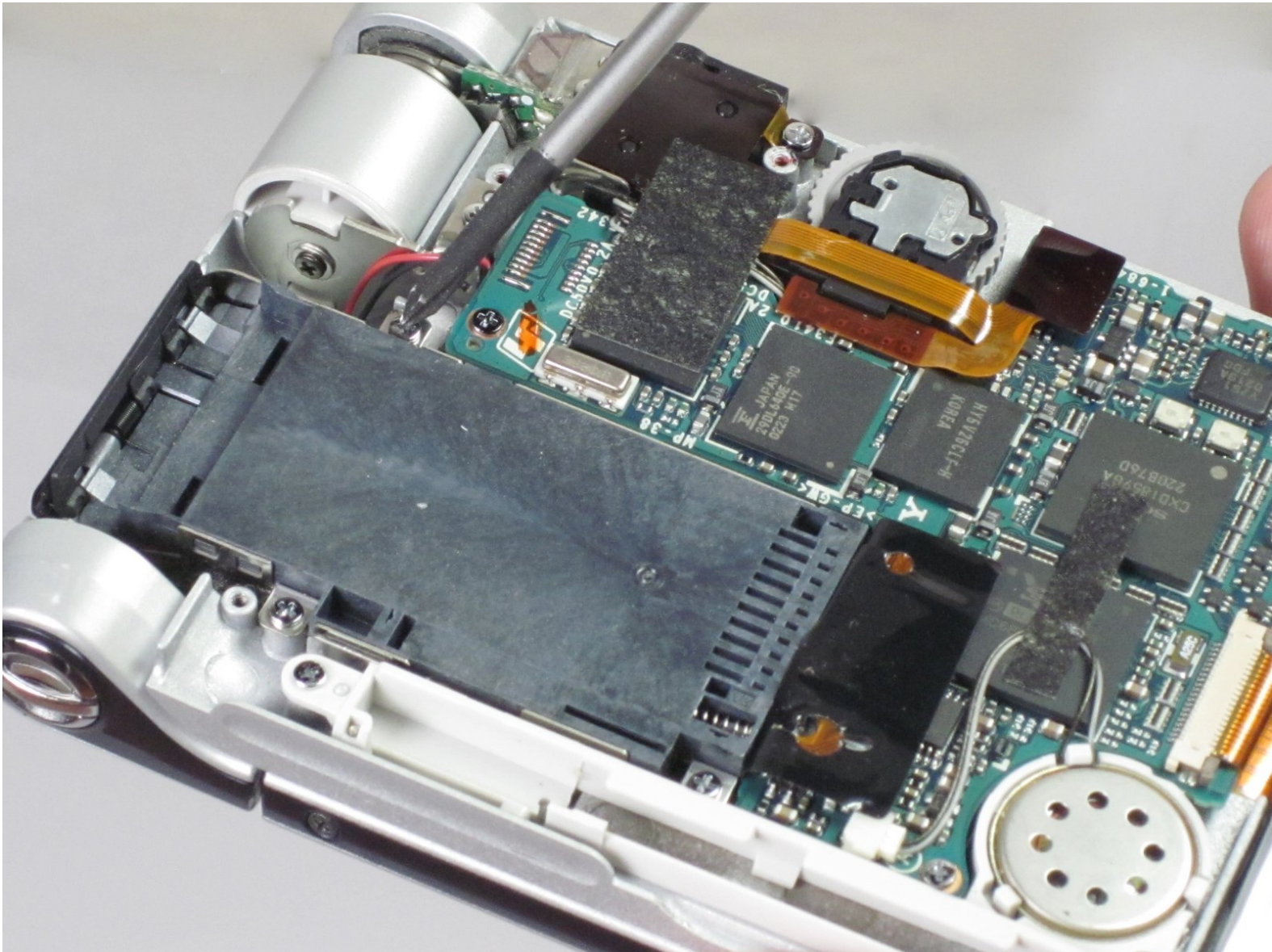




Sony Clie PEG-NR70 Memory Module Replacement

This guide shows you how to disassemble the device in order to replace the memory module.

Written By: Daniel Soski



INTRODUCTION

If your device is having trouble reading memory you probably need to replace the memory module. This guide will show you step-by-step how to install a new memory module.



TOOLS:

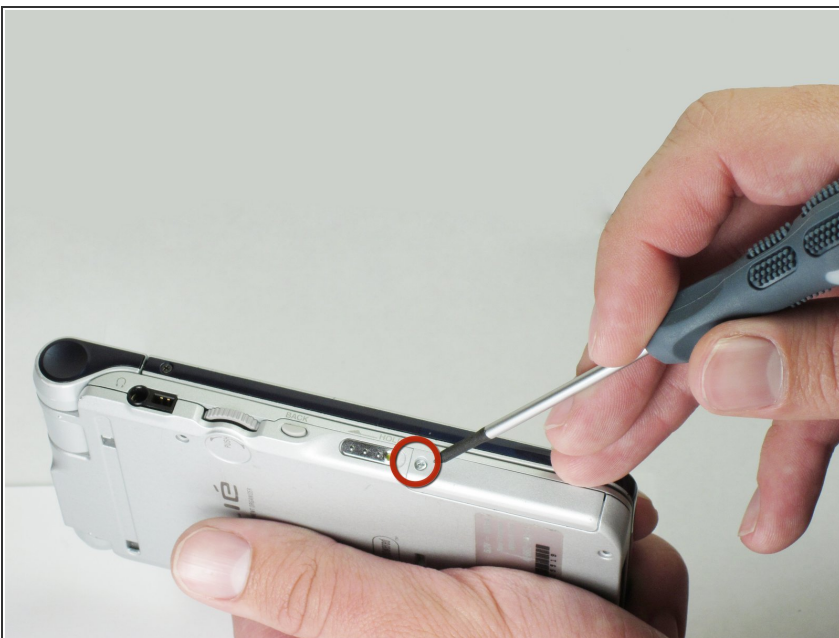
- [Phillips #00 Screwdriver](#) (1)
-

Step 1 — The Case



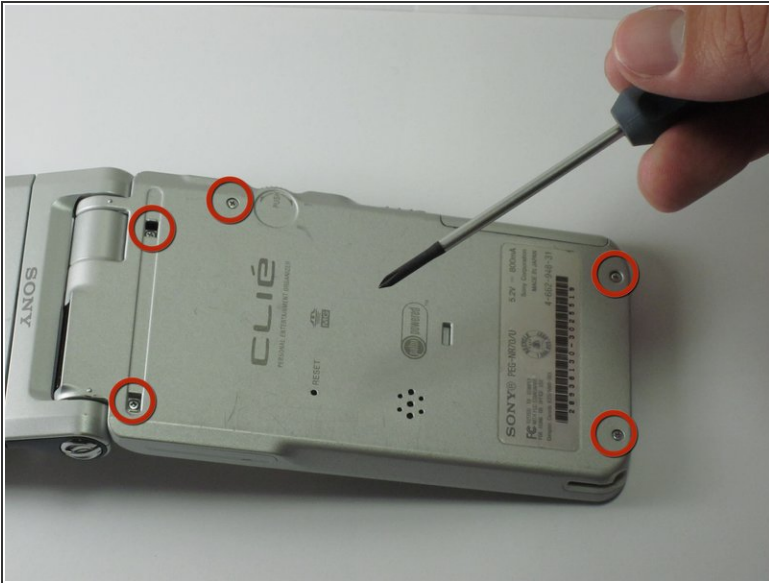
- Unscrew the 1.9mm screw located at the top of the device with a Phillips #00 screwdriver.
- ⓘ It may be helpful to set up a piece of paper to keep track of where removed screws came from.

Step 2



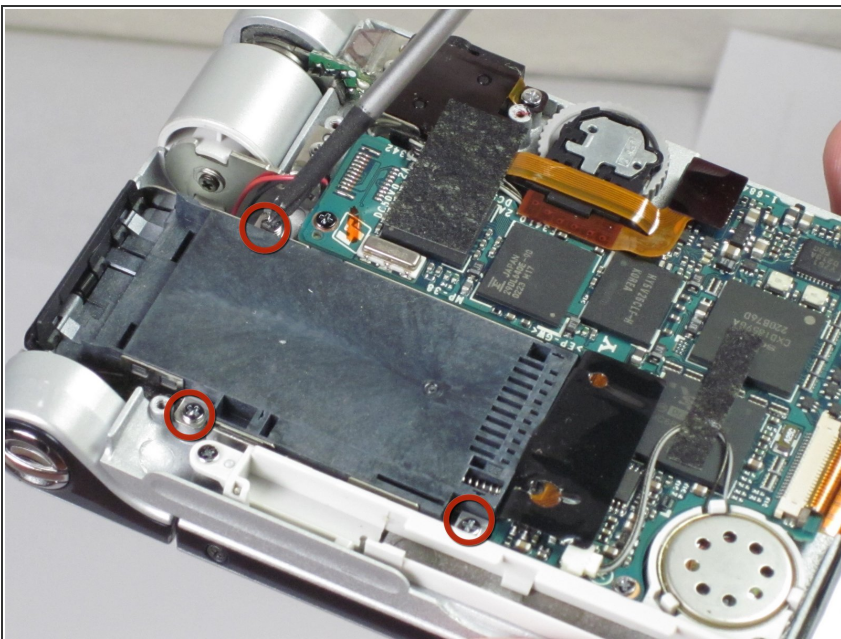
- Unscrew the 2.5mm screw located on the left side of the device with a Phillips #00 screwdriver.

Step 3



- Unscrew the five 2.5mm screws on the back panel with a Phillips #00 screwdriver.
- Remove the back panel by lifting it away with your hands.

Step 4 — Memory Module



- Holding the memory module in place, unscrew the three 0.9mm screws with a Phillips #00 screwdriver.

Step 5



- Lightly grab the memory module and pull it upwards.
- ⓘ Make sure you grab the end closest to the edge of the device. You may have to wiggle the module a bit to get it to come free.

To reassemble your device, follow these instructions in reverse order.