



Kobo Glo HD eReader Battery Replacement

This repair is surprisingly easy: you need a...

Written By: [anarcat](#)



INTRODUCTION

This repair is surprisingly easy: you need a guitar pick, your fingernails, and some wedge to pull the battery out of its backing glue. It might be dangerous because the battery is flexible and could burn or explode if punctured, but in practice it seems safe enough.

This is similar to the [kobo glo ereader Screen Replacement](#) but easier. See [this thread](#) for a detailed discussion.

For your safety, discharge the battery below 25% before disassembling your device. This reduces the risk of fire if the battery is accidentally damaged during the repair. If your battery is swollen, [take appropriate precautions](#).

🔧 TOOLS:

[iFixit Opening Picks \(Set of 6\)](#) (1)
[Jimmy](#) (1)

⚙️ PARTS:

[Kobo Glo HD replacement battery](#) (1)

Step 1 — Completely power down the device



- Just hold the top power button.

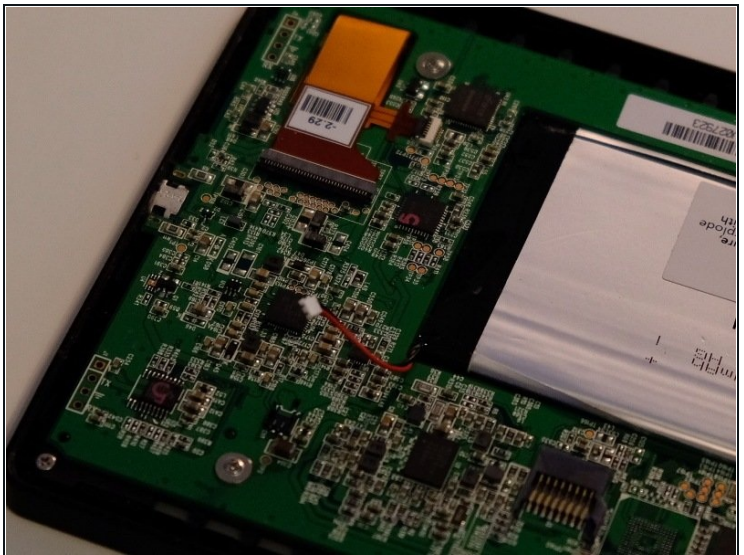
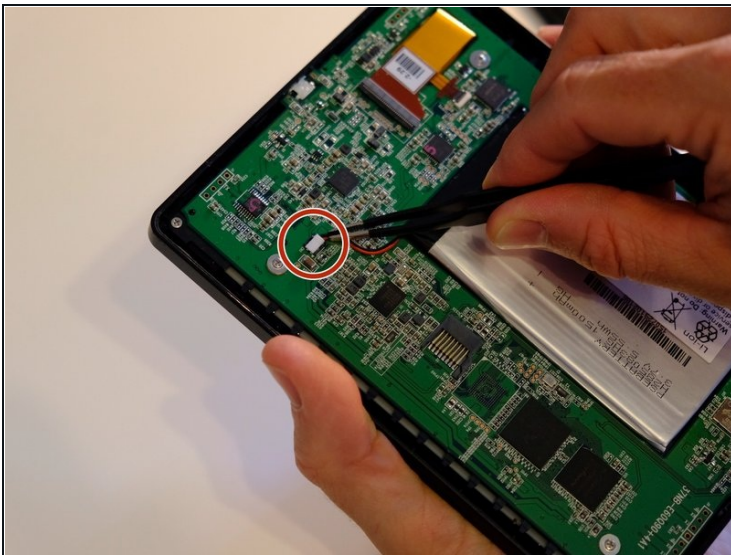
ⓘ In my case the battery was out of power so I wasn't able to actually power it down, which is why you do not see the typical "Powered down" message on the screen. That should not matter.

Step 2 — Remove back cover



- 1. flip it backwards so it is face down on your desk
- 2. use a pick or your fingernails to pry the back open
- 3. when done, you should see the battery (in grey) and the main board (in green)

Step 3 — Unplug the old battery



- The connector is white at the end of red/black cables
- It can be disconnected with tweezers or (more easily) just with your fingers

Step 4 — Pull out the old battery

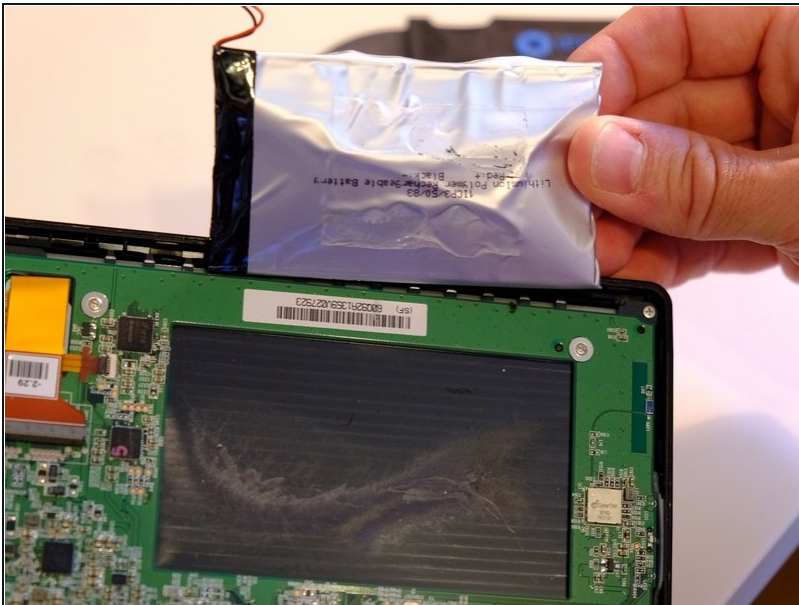


⚠ This is the tricky part! Be careful not to puncture or bend the battery too much!

- You can start prying out the old battery by picking at a corner if there's a flat piece of plastic without any battery stuff under it, as in the picture.
- When the battery is about this removed, you may be able to just pull it out with your fingers.

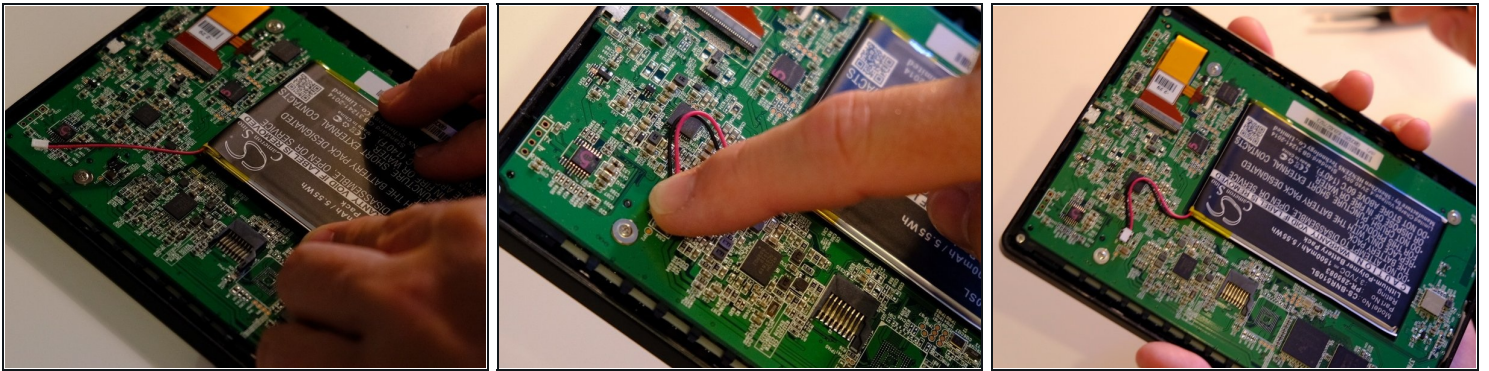
⚠ Take time to gently pry battery out! In the photos here the battery is deformed, see [the comment below](#) for an alternative procedure.

Step 5 — Dispose of the old battery



- The battery is glued to the back of the front panel.
- ☑ Don't forget to dispose safely of old batteries! Bring it to your local recycling program, don't throw it in the trash!
- Also: you might want to keep it around in case your repair fails and you need to put it back in.

Step 6 — Put the new battery in.



- Place the new battery down in the place of the old one.
 - Plug in the power cable, I found that the easiest is to just push it in with my fingers. Make sure it is well connected and flat down on the board.
 - ① I am not sure how to make the new battery hold. If you have double-sided tape, it might just work here.
 - ① Otherwise the battery kind of fits in there snugly and doesn't move that much. You might get away with just leaving it like this.
- ⚠ What is certain is that the old glue doesn't work for the new battery, so you definitely will want *something* to hold it in place here.
-

To reassemble your device, follow these instructions in reverse order.