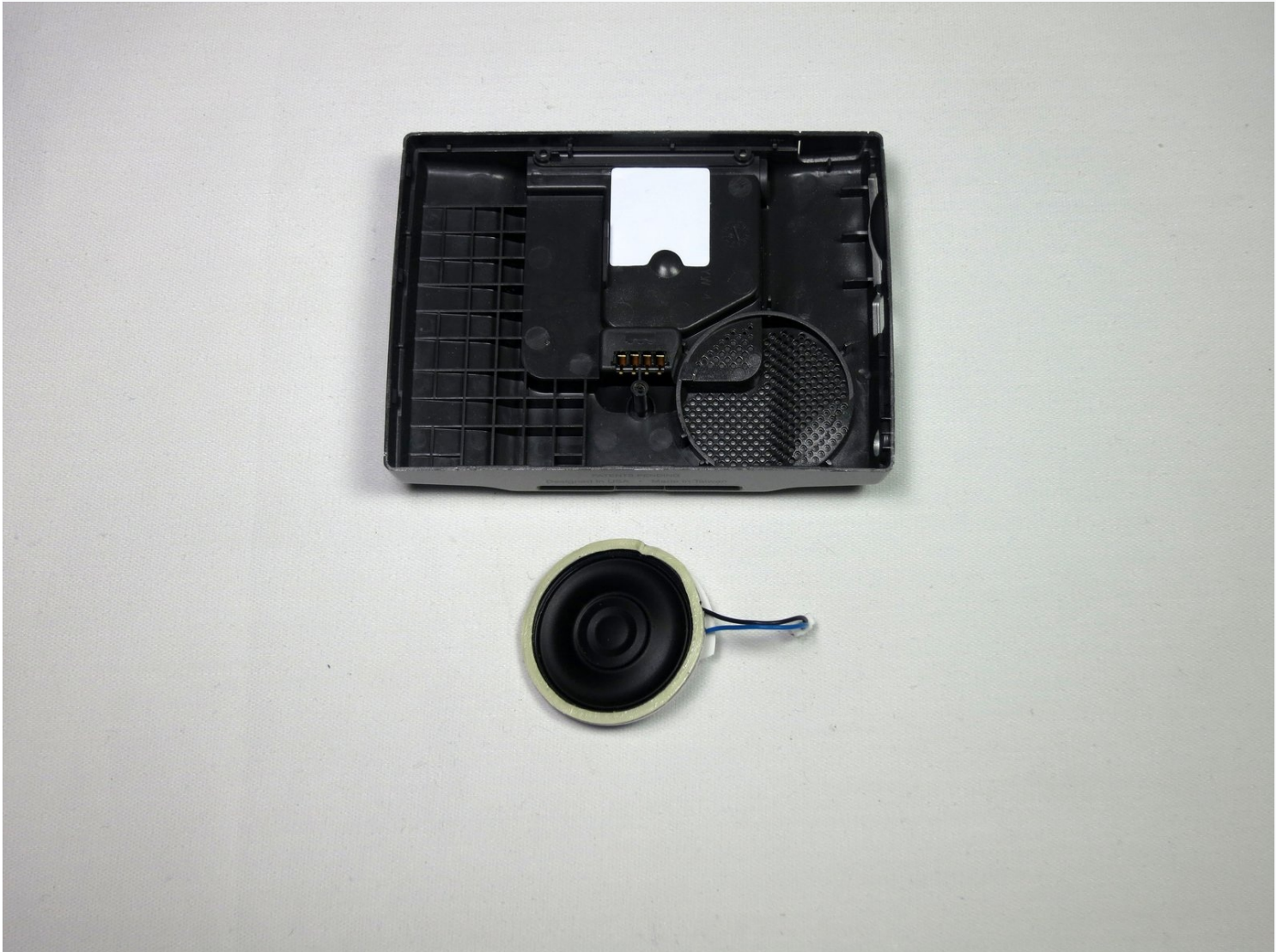




# Garmin Nüvi 370 Speaker Replacement

In this guide the repairer replaces the speaker...

Written By: Matt West



# INTRODUCTION

In this guide the repairer replaces the speaker of the device by disassembling the device further to expose the motherboard and speaker.

## Prerequisite Guide:

[Disassembling Garmin Nuvi 370 Into Core Components](#)

## Tools Used:

- Fine Point Tweezers
- Spudger

**Estimated Duration:** 10 minutes

---

### TOOLS:

[Tweezers](#) (1)

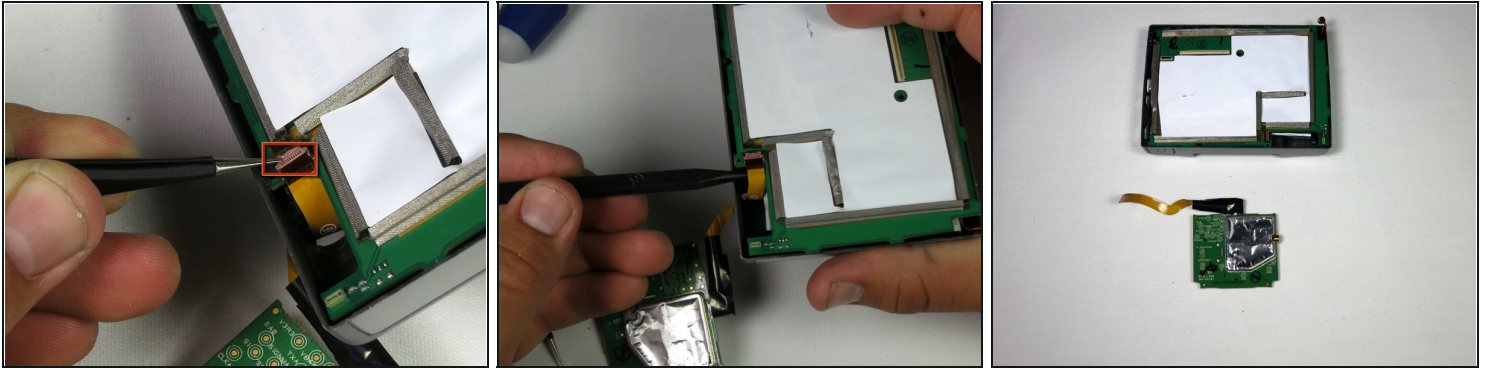
---

## Step 1 — Speaker



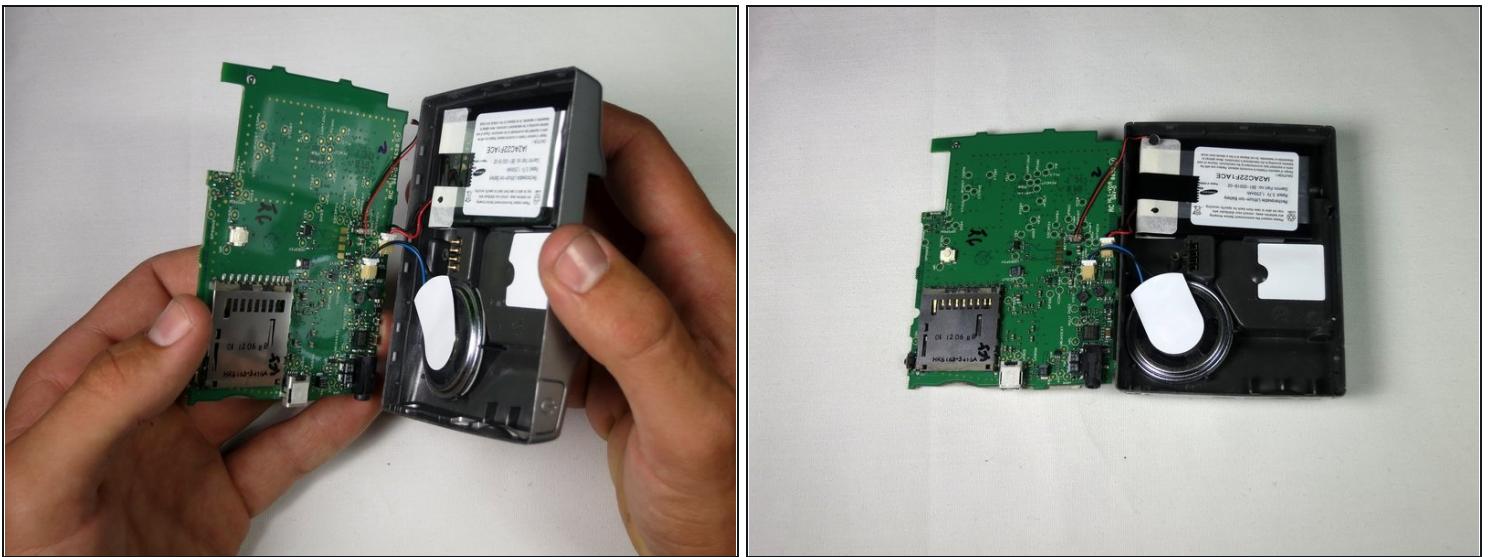
- After following the instructions in the [main dis-assembly guide](#), you should have the screen detached from the motherboard.

## Step 2



- Use the [tweezers](#) or the spudger to lift the tan latch off the ribbon cable (ZIF connector) and gently pull out the ZIF connector and cable from underneath the opened latch.

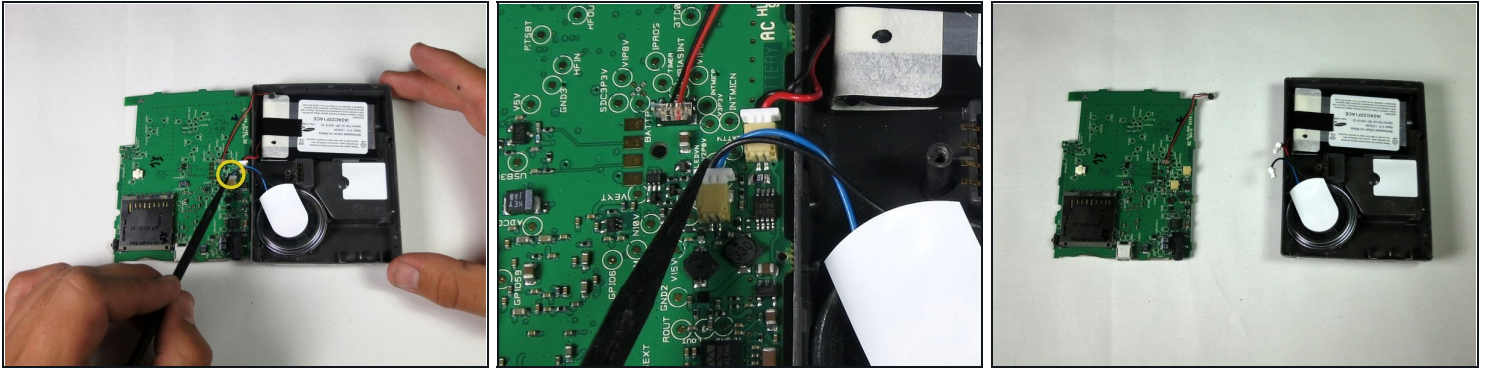
## Step 3



- The motherboard will now freely separate from the back casing; lay it flat next to the housing.

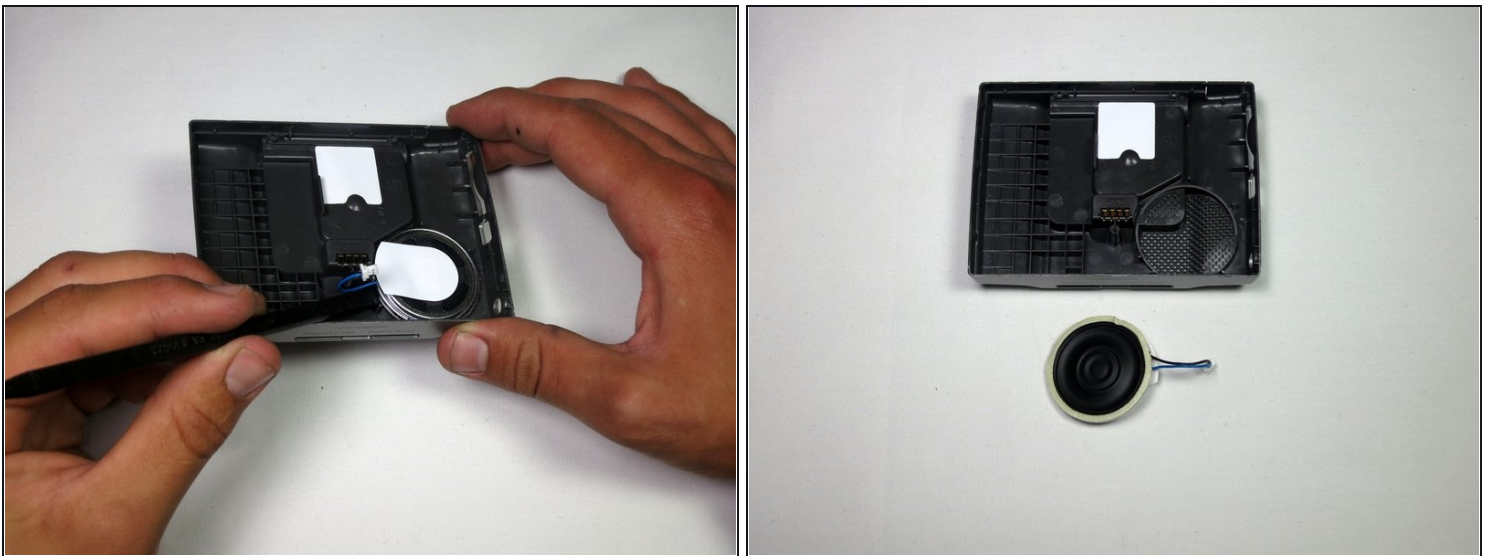


## Step 4



- Detach blue speaker cable from motherboard.
  - ⓘ Battery cable is detached in this picture, and it is not required to do so to install a new speaker.

## Step 5



- Detach speaker from casing and insert new, functional speaker.
  - ⓘ Battery is removed in the picture and is not required for the installation of a new speaker.

To reassemble your device, follow these instructions in reverse order.