



LG Tribute Royal Teardown

Written By: Rose Schneider



Step 1 — Remove back panel



- Use a spudger to open the back panel and disconnect it from the phone.

Step 2 — Unscrew all the screws



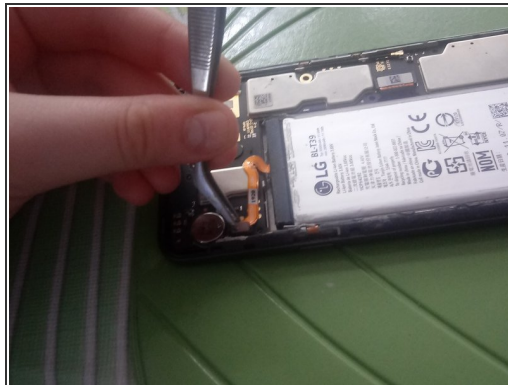
- Unscrew all 16 screws holding the back panel cover on to the phone

Step 3 — Remove back cover



- Apply adequate force to the back panel to remove it from the phone

Step 4 — Remove battery



- Disconnect the ribbon cable that connects the battery to the motherboard. I suggest you heat up the battery first because of the glue and not do what i did. Use spudger to pry up the battery from the device.

Step 5 — Remove back camera



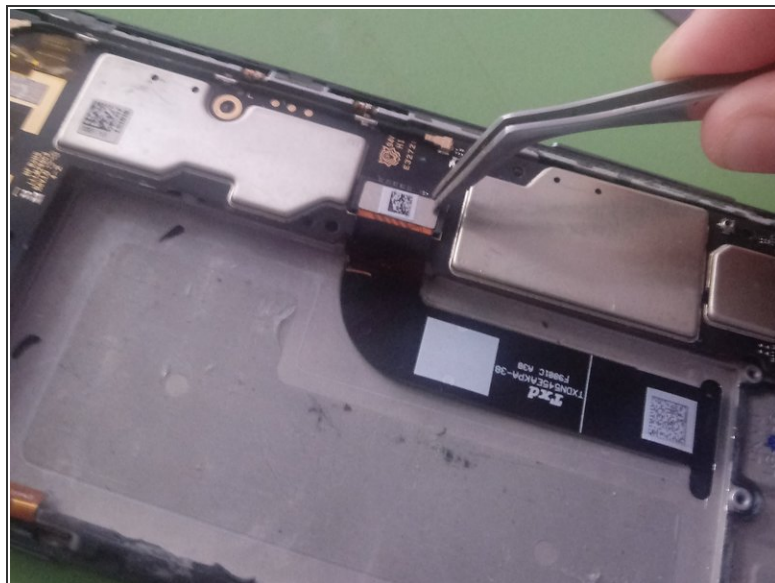
- Disconnect the back camera from the motherboard by disconnecting the connector from the motherboard

Step 6 — Remove front camera



- Disconnect the front camera from the phone by disconnecting the ribbon cable from the front camera attached to the motherboard.

Step 7 — Disconnect display



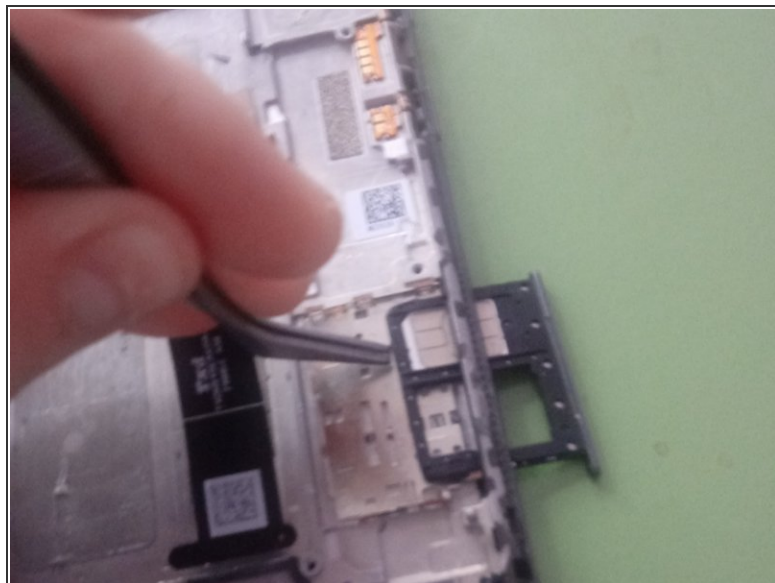
- Disconnect the display ribbon cable from the motherboard.

Step 8 — Remove motherboard



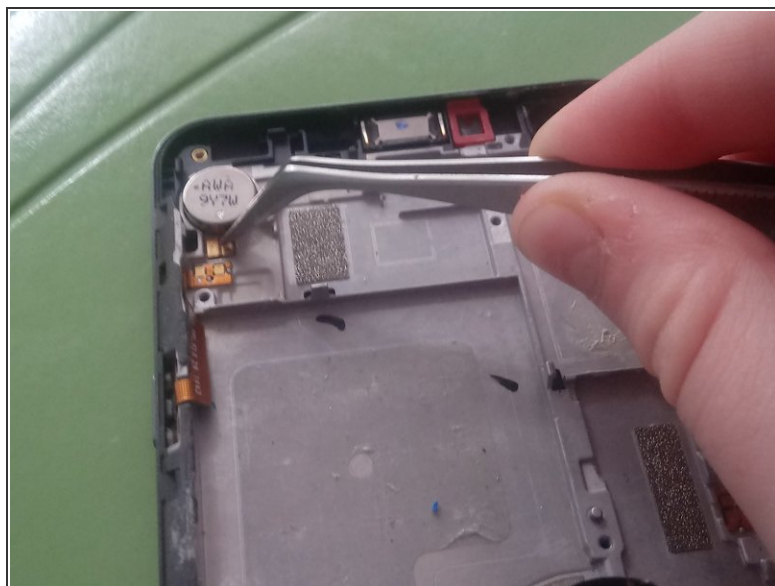
- To remove the motherboard apply adequate pressure because there will be some resistance. Try to avoid as much thermal paste as you can.

Step 9 — Remove sim card and holder



- To remove sim card just push it out the side. The sim card will be in the holder.

Step 10 — Remove Vibrator Motor



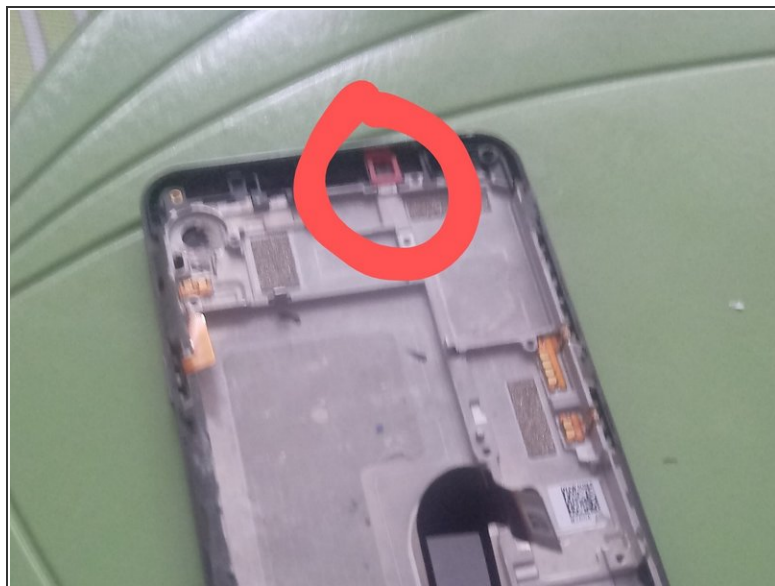
- Disconnect the ribbon cable holding down the vibrator motor then remove it.

Step 11 — Remove Speaker



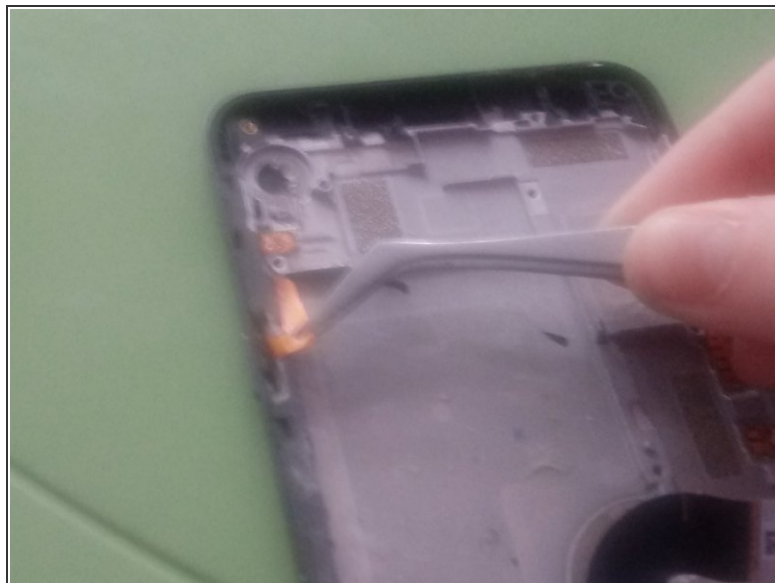
- Remove the speaker at the top of the phone.

Step 12 — Remove microphones



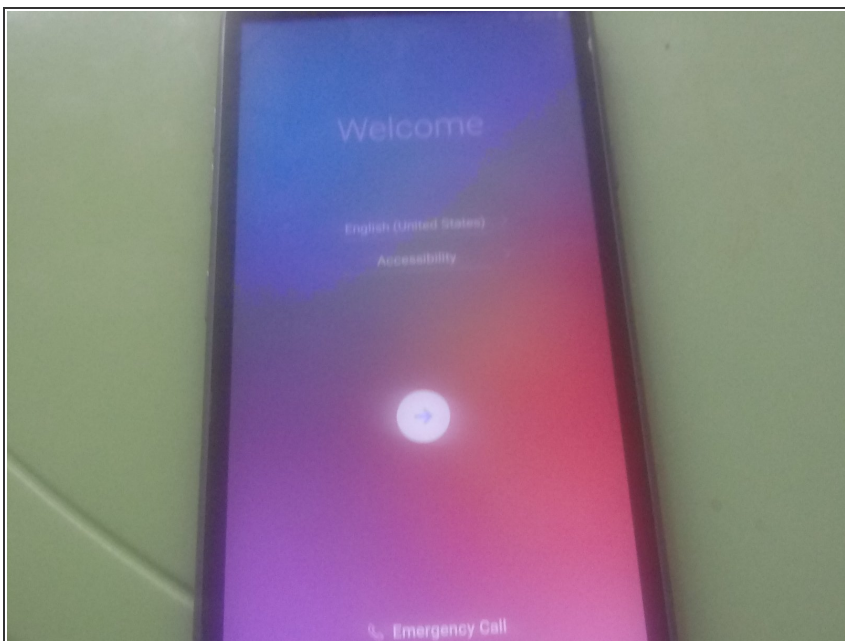
- Remove microphones

Step 13 — Remove side buttons



- Remove the side buttons by disconnecting the ribbon cables on each one.

Step 14 — Reassemble the phone



- Follow the steps backwards in order to reassemble the phone.

Step 15



- Be sure to clean the sim card with compressed air or else it wont work