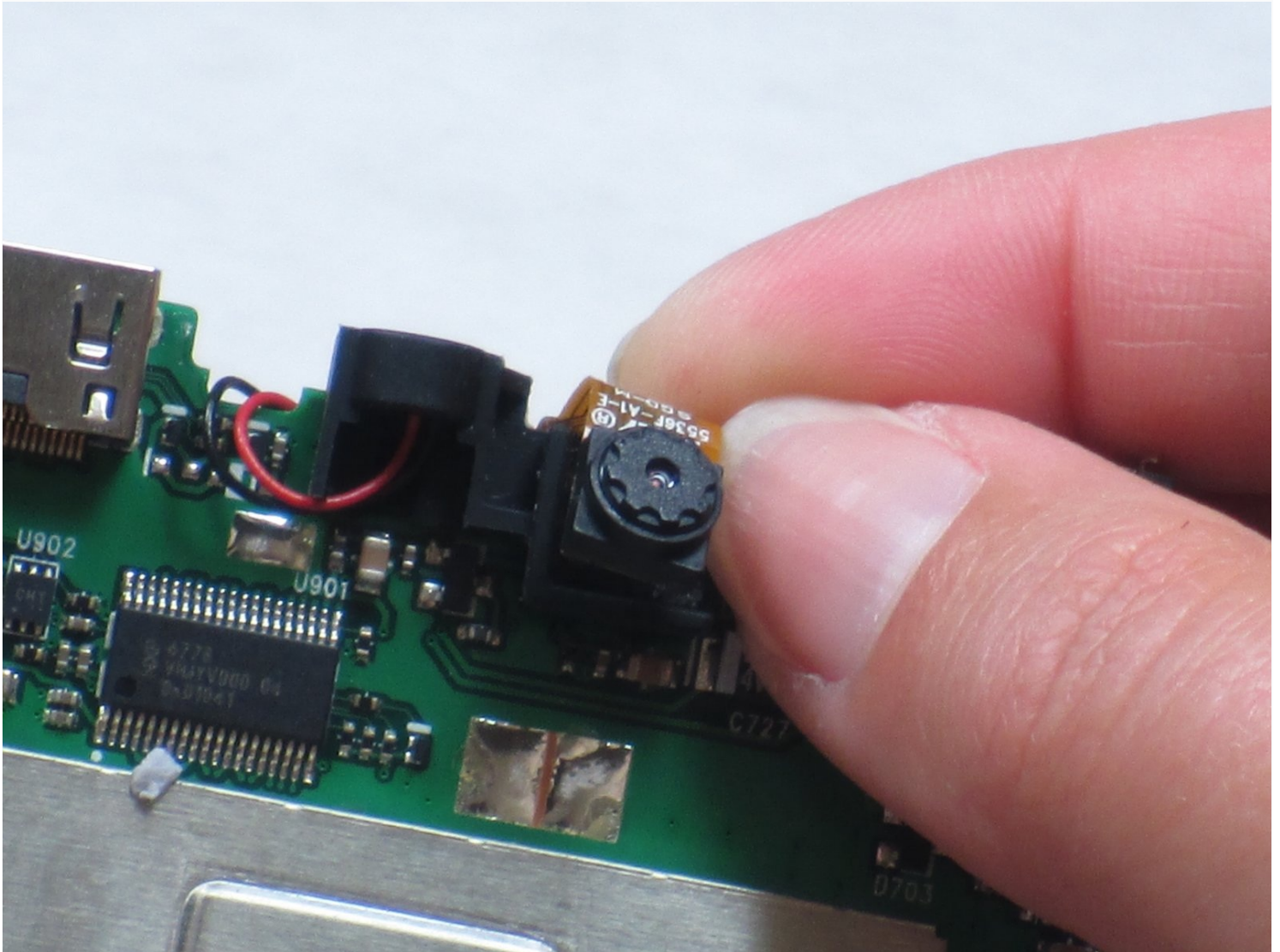




Creative Ziio 7" Camera Replacement

This guide will help you troubleshoot and fix...

Written By: Kendall Ruggles



INTRODUCTION

This guide will help you troubleshoot and fix common issues like camera malfunctions and motherboard failures. No special skills are needed, just a Phillips screwdriver and a replacement part if required. Let's get started on restoring your Creative Ziio 7" tablet's functionality!

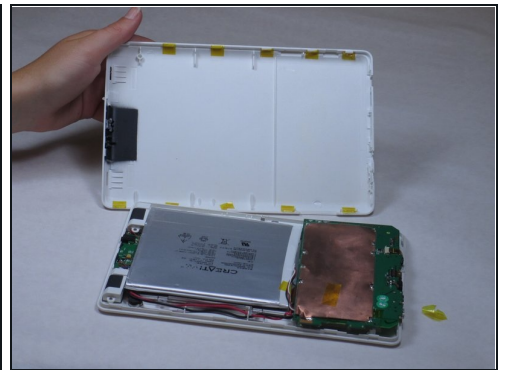
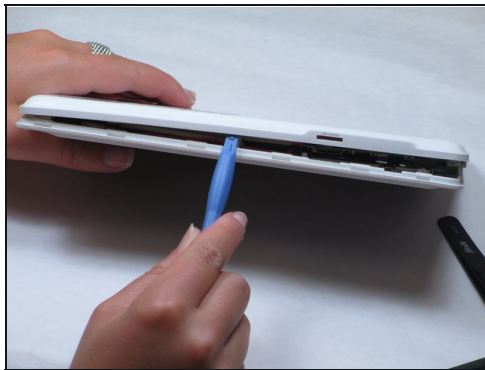
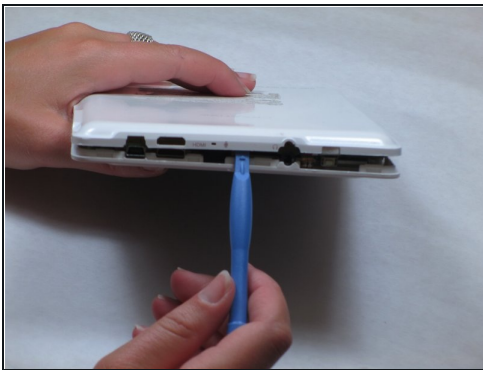
TOOLS:

[iFixit Opening Tool](#) (1)

[Phillips #00 Screwdriver](#) (1)

[Spudger](#) (1)

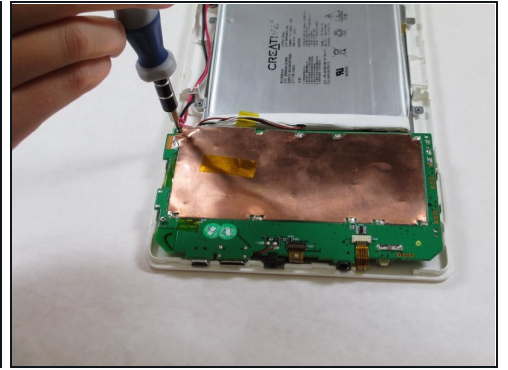
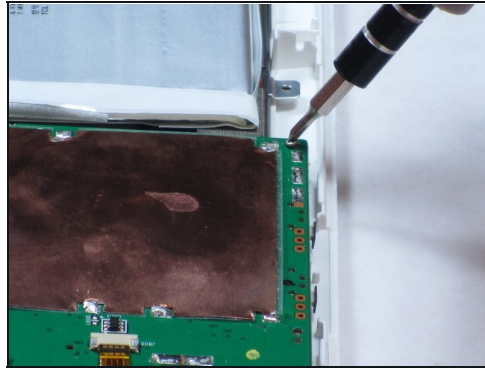
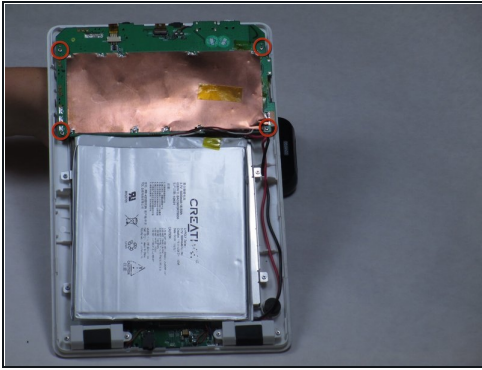
Step 1 — Back Panel



- Remove the back panel by using the plastic opening tool to carefully pry around the panel's edges.

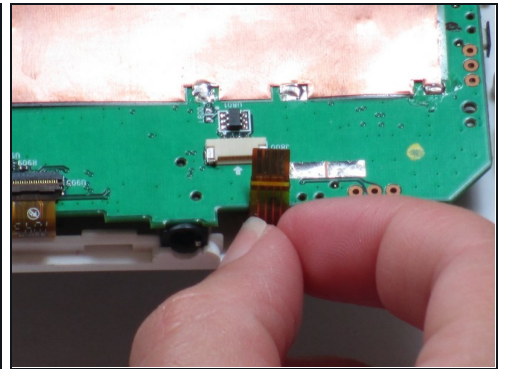
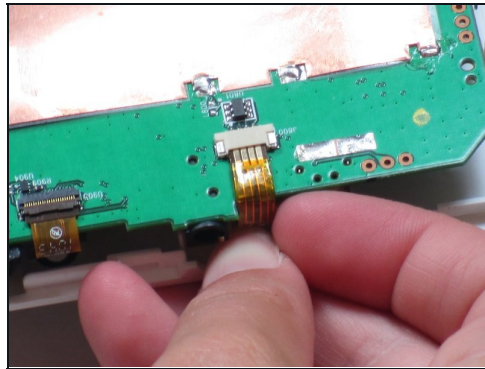
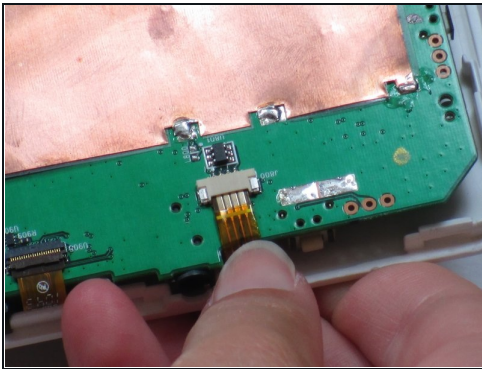
 The volume control button and the top power button may fall out during this step.

Step 2 — Camera



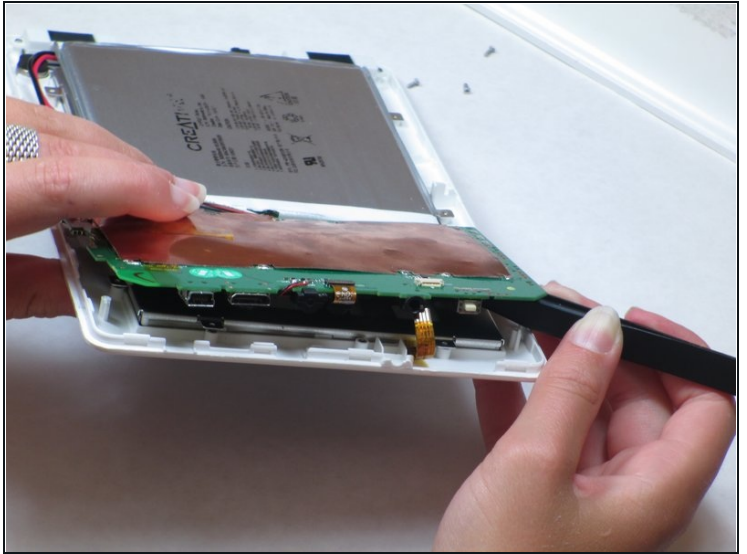
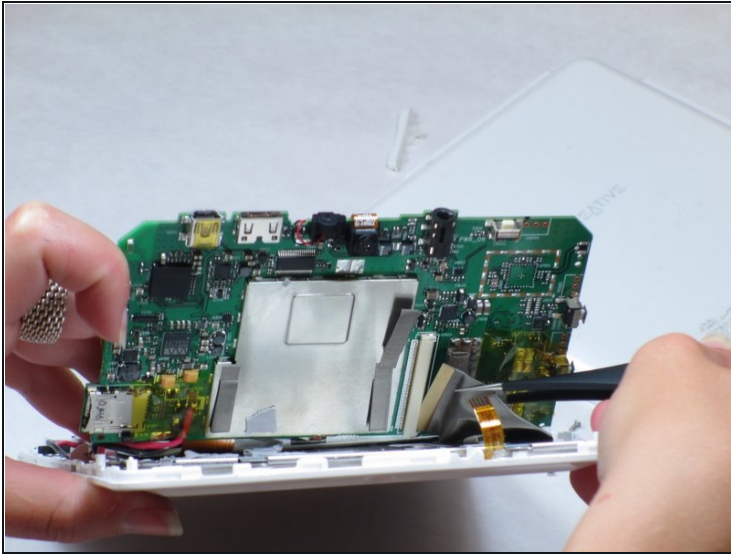
- ✦ Unscrew the four Phillips #00 screws, each measuring 3mm, located at the corners of the motherboard.

Step 3



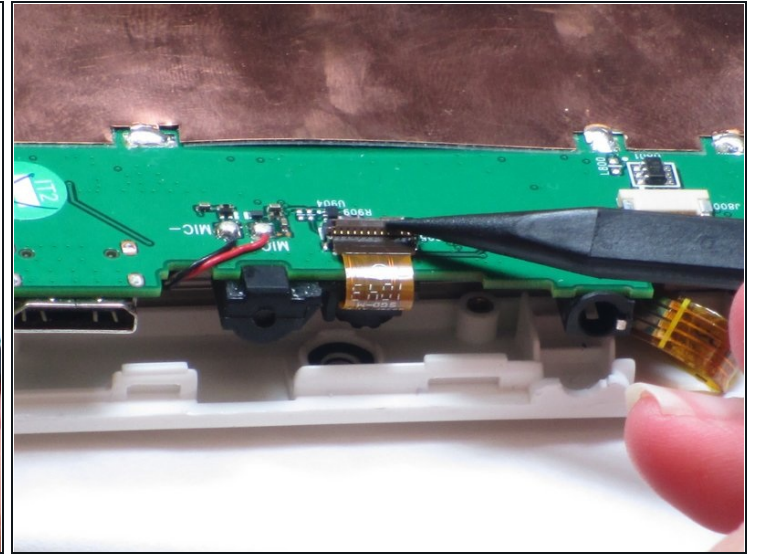
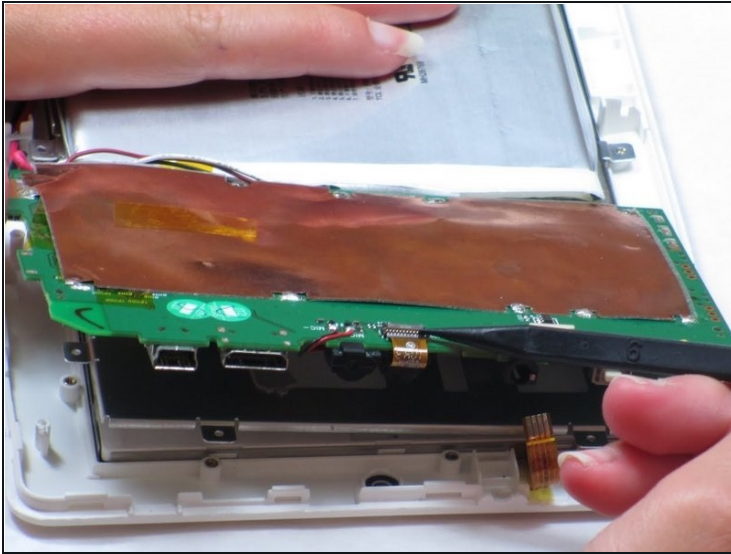
- Disconnect the ribbon cable located near the edge of the motherboard in the bottom right corner of the device.

Step 4



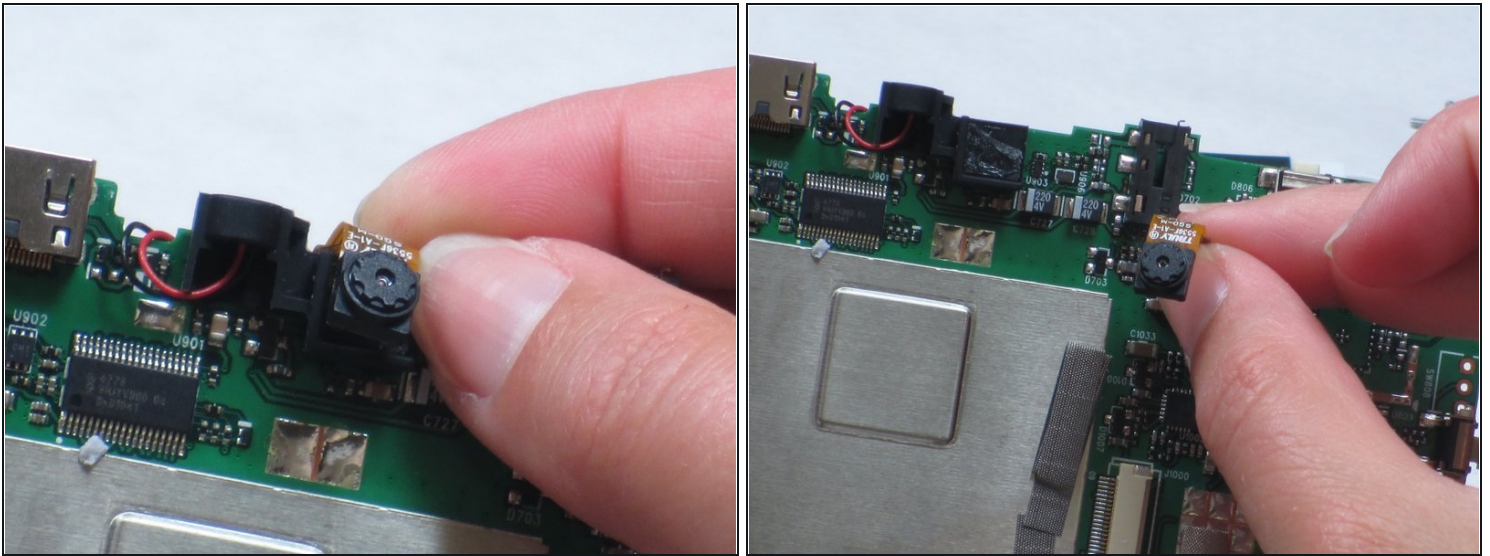
- Lift up the motherboard *carefully*.
- ① A mesh-like strip on the right side will be connected to the bottom of the motherboard.
- Remove the tape on top of the strip. Use [tweezers](#) or pliers to pull on the strip and unplug it.

Step 5



- Lift up the motherboard and locate the ribbon cable (burnt orange-colored strip) centered on top of the motherboard.
- ① The ribbon cable with the attached camera is plugged into the motherboard.
- Unplug the ribbon cable using your fingers to pull up on the flap.

Step 6



- Use a spudger to pry the camera away from the rubber camera mount.
- ⚠ Do not remove the entire rubber camera mount. Only remove the camera attached with adhesive.**
- Remove the broken camera and use electronic-friendly adhesive to attach a new camera.

In summary, following these steps should allow you to replace the camera on your Creative Ziio 7" tablet effectively. Just make sure to power off the device, handle components carefully, and test the new camera thoroughly post-installation. If you run into any issues, refer to the manufacturer's instructions or seek professional assistance for a smooth repair process.