



POLAR CADENCE SENSOR BLUETOOTH® SMART

Battery replacement

Polar is producing fine gear for athletes...

Written By: Milena Haiges



INTRODUCTION

Polar is producing fine gear for athletes giving them the information about their training. Usually only delivered Polar software lacks of updates but with the cadence Sensor same as the speed sensor, Polar managed to make a simple battery change a mess. I'll show you how to successfully change the battery of the POLAR CADENCE SENSOR BLUETOOTH® SMART.

Step 1 — The Sensor



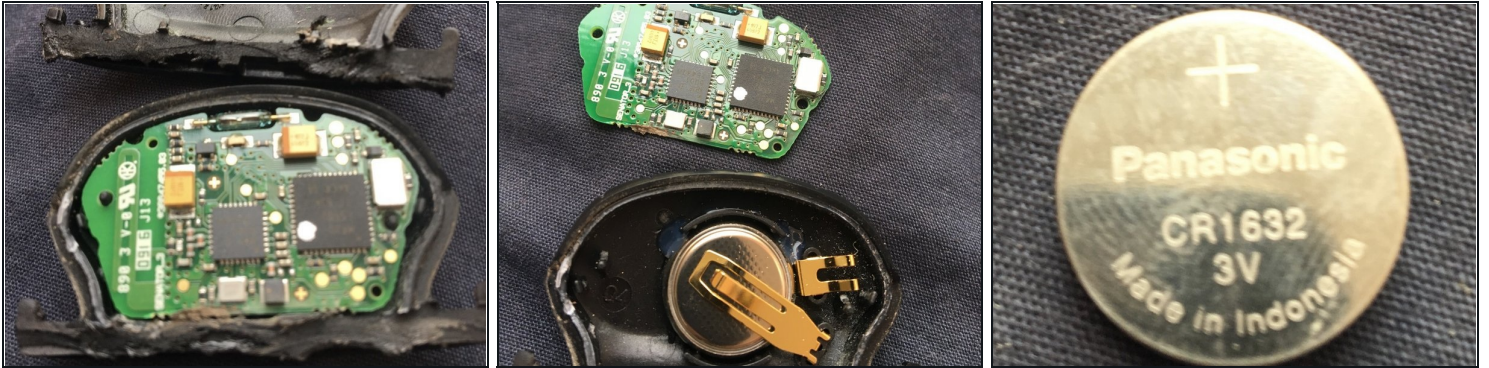
- Removed Cadence Sensor from frame

Step 2 — Cutting open the Sensor



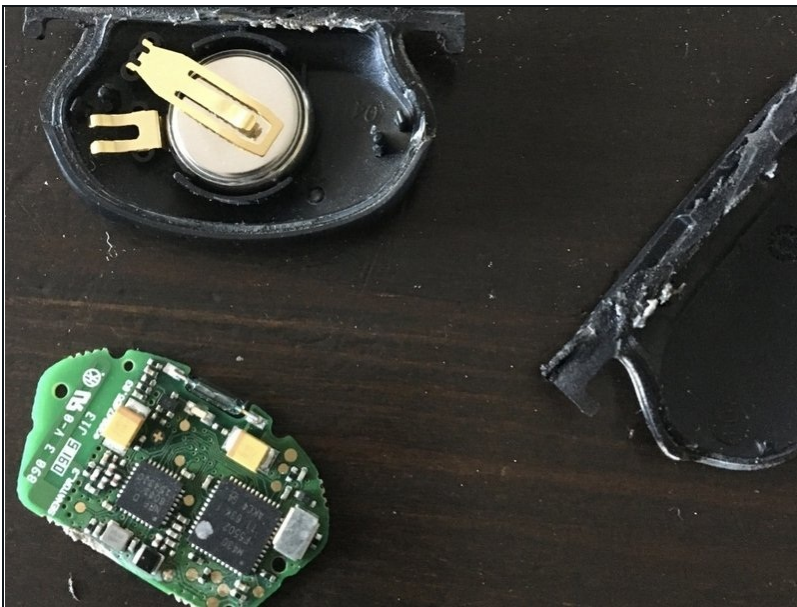
- Either use hacksaw or Dremel to cut open downside of the sensor. Use the carve of the body for guidance.

Step 3 — Behind the circuit board lies the truth



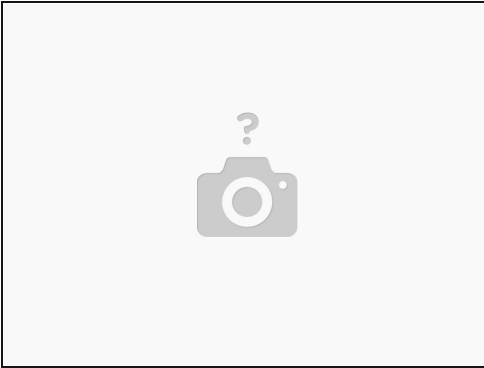
- After cutting the downside, sensor can easily be opened. Remove circuit board with care not to break the pin. Remove copper clamp with [tweezers](#).

Step 4



- Replacing the battery

Step 5 — First test of the new battery



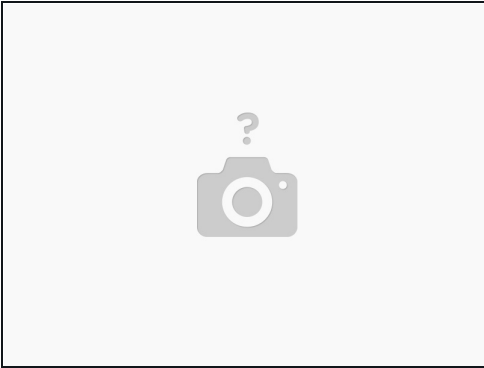
- Move magnet close to diode. Flashing indicates successful replacement

Step 6 — Glueing it up



- Glue it up (maybe nicer than I did)

Step 7 — 2 Function Test



- Second functional test with glued chasis

Step 8



- Bonus IC Identification:
 - Texas Instruments [MSP430F5502](#) 16-Bit Microcontroller w/ 24 KB Flash
 - Nordic Semiconductor [nRF8001](#) Bluetooth Low-Energy Transceiver

To reassemble your device, follow these instructions in reverse order.