



Bowers and Wilkins P5 Headphones Driver Replacement

Left or right channel died? If continuity seems good, you may need a new driver.

Written By: Jon



INTRODUCTION

A friend donated his P5s whose left channel had died (like mine). I was able to use his working right driver on the left side.

TOOLS:

- [Jimmy](#) (1)
 - [Metal Spudger](#) (1)
 - [Soldering Workstation](#) (1)
 - [Phillips #0 Screwdriver](#) (1)
-

Step 1 — Driver



- Remove the earpads from your P5s.
- *Removed driver in centre.*

Step 2



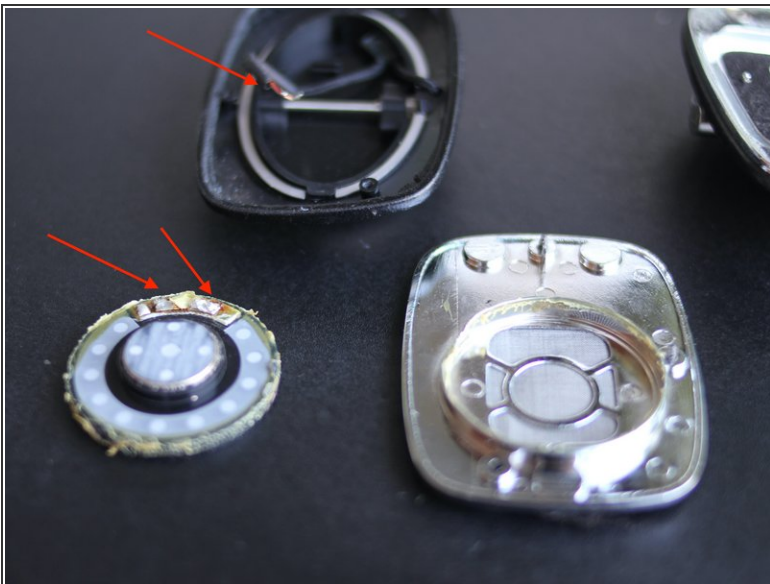
- Each side uses three Phillips screws, which are covered in fabric. You can either gently scrape away the fabric in the areas indicated, or insert your driver directly. I did the former but it can bunch up the fabric.
- *This is the right side.*

Step 3



- Each side uses three Phillips screws, which are covered in fabric. You can either gently scrape away the fabric in the areas indicated, or insert your driver directly. I did the former but it can bunch up the fabric.
- *This is the left side.*

Step 4



- Gently flip each driver area to the side - it will still be connected to the headband with two soldered wires.
- De-solder each wire to fully separate the driver area. (Already completed and driver removed in this step.)

Step 5



- The drivers are inconveniently glued in place, but can be relatively easily removed with some elbow grease.
- I used an iOpener to soften the glue, along with a Jimmy and metal spudger to score the glue around the circumference.
- Each driver area has a cutout section, as indicated, which will assist you with prying out the driver.
- Try to work the driver out only by its sides. I pushed my metal spudger underneath and pried upward and damaged the driver grille.

Step 6



- Swap the working driver from one set to the other set and solder it in place.
- Voila!

To reassemble your device, follow these instructions in reverse order and solder the new driver back in place.