



Logitech Mouse G302 Disassembly

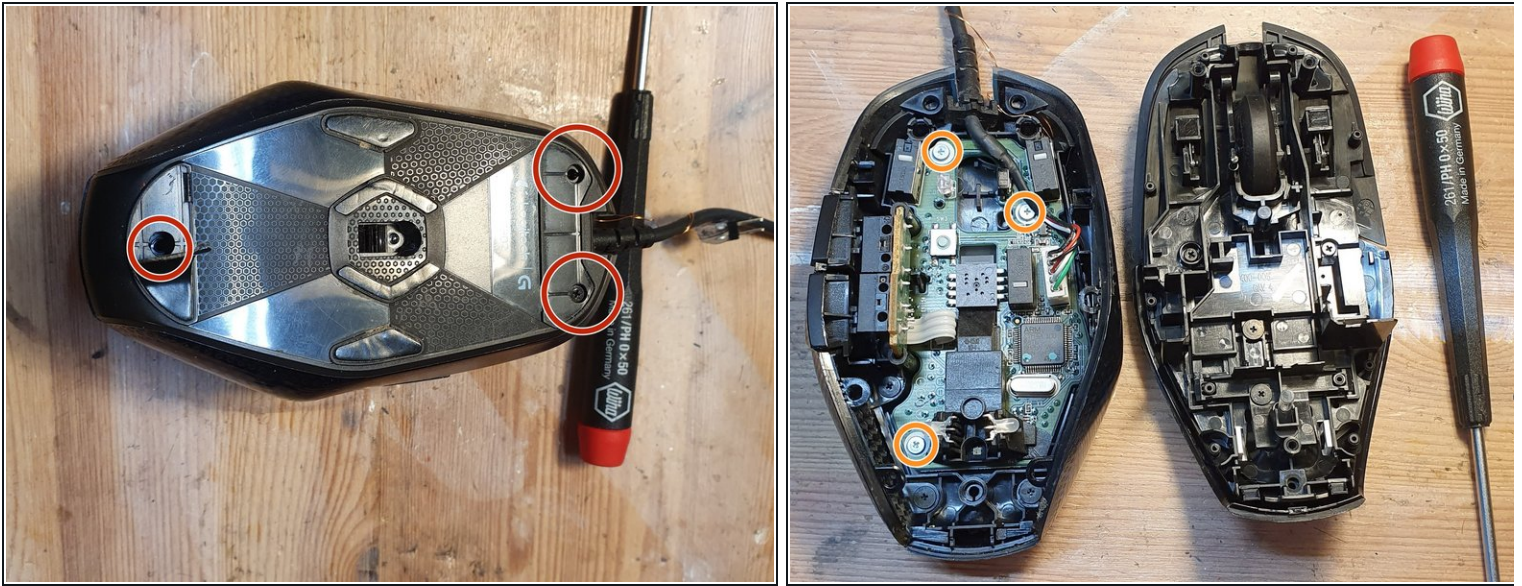
Written By: Carsten Dahl Hjarup



TOOLS:

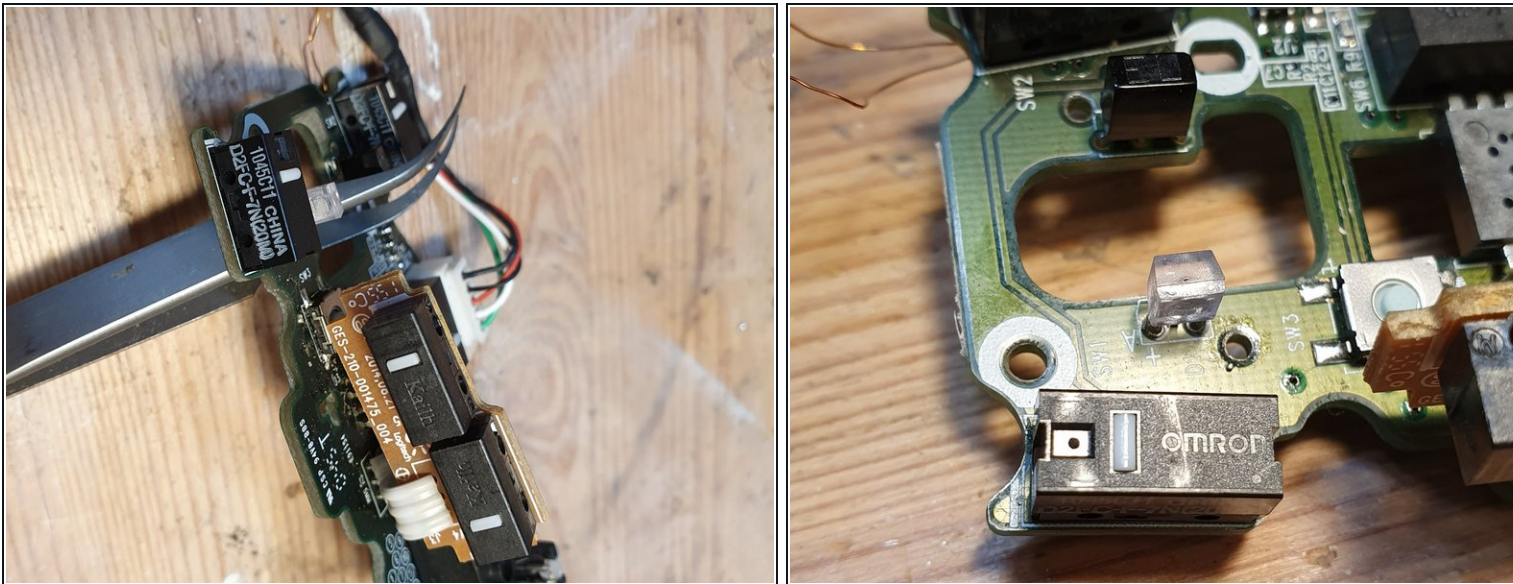
Phillips #0 Screwdriver (1)
iFixit Opening Tool (1)
iFixit Opening Picks (Set of 6) (1)
Spudger (1)

Step 1 — Open the case



- Flip the mouse over to gain access to the bottom.
- Using a scalpel, pick, or similar tool, peel away the slide pads on the bottom of the mouse in order to expose the three screws.
- Using a PH0 / Phillips #0 driver, remove the 3 screws shown in red.
 - ❗ Peel away as little of the pads as possible, in order to preserve the adhesive on their undersides.
- Gently separate the two halves of the case. Light prying may be required.
- For PCB removal : remove 3 PH0 screws from PCB surface. The whole PCB can be taken out for inspection and repair after the screws are removed.

Step 2 — Switch replacement



- The switch's brand is Omron. Part number: D2FC-F-7N. Components have 3 pins leaded type (two utilized)
- I experienced one switch working intermittently. In such case, I recommend replacing both L & R switches.

Step 3 — Switch information

Visible Rotate Right

View

Edit Text Edit Object

Edit

Typewriter Highlight

Comment

Kotate Pages

Extract

Page Organization

Scan

Quick OCR

Convert

PDF Sign

Protect

Purchase Now

Get Business

D2F

Ultra Subminiature Basic Switch

Dimensions (Unit: mm) / Operating Characteristics

The following illustrations and drawings are for D2F models with PCB terminals (straight). Self-clinching, solder, compact solder, and right-angled, left angled terminals are omitted from the following drawings. Refer to the previous page for these terminals. When ordering, replace □ with the code for the terminal that you need. See the "List of Models" for available combinations of models.

● Pin Plunger Models

D2F□

D2F-01□

D2F-F□

D2F-01F□

Operating Characteristics	Model	D2F-□	D2F-F□
Operating Force	OF	Max. 1.47 N (150 gf)	0.74 N (75 gf)
	RF	Min. 0.20 N (20 gf)	0.05 N (5 gf)
Pretravel	PT	Max. 0.5 mm	0.5 mm
	OT	Min. 0.25 mm	0.25 mm
Overtravel	OT	Max. 0.12 mm	0.12 mm
	MD	Max. 0.12 mm	0.12 mm
Operating Position	OP	5.5±0.3 mm	

● Hinge Lever Models

D2F-L□

D2F-01L□

D2F-FL□

D2F-01FL□

Operating Characteristics	Model	D2F-L□	D2F-FL□
Operating Force	OF	Max. 0.78 N (80 gf)	0.25 N (25 gf)
	RF	Min. 0.05 N (5 gf)	0.02 N (2 gf)
Overtravel	OT	Min. 0.55 mm	0.55 mm
	MD	Max. 0.5 mm	0.5 mm

- This is helpful for finding the correct replacement or compatible replacement e.g. vendors from online store AliExpress.
- I used this as a successful replacement: RS Components Stock No. 682-1519 microswitch. Manufacturer is Omron, manufacturer part number is D2F-F.

To reassemble your device, follow these instructions in reverse order.