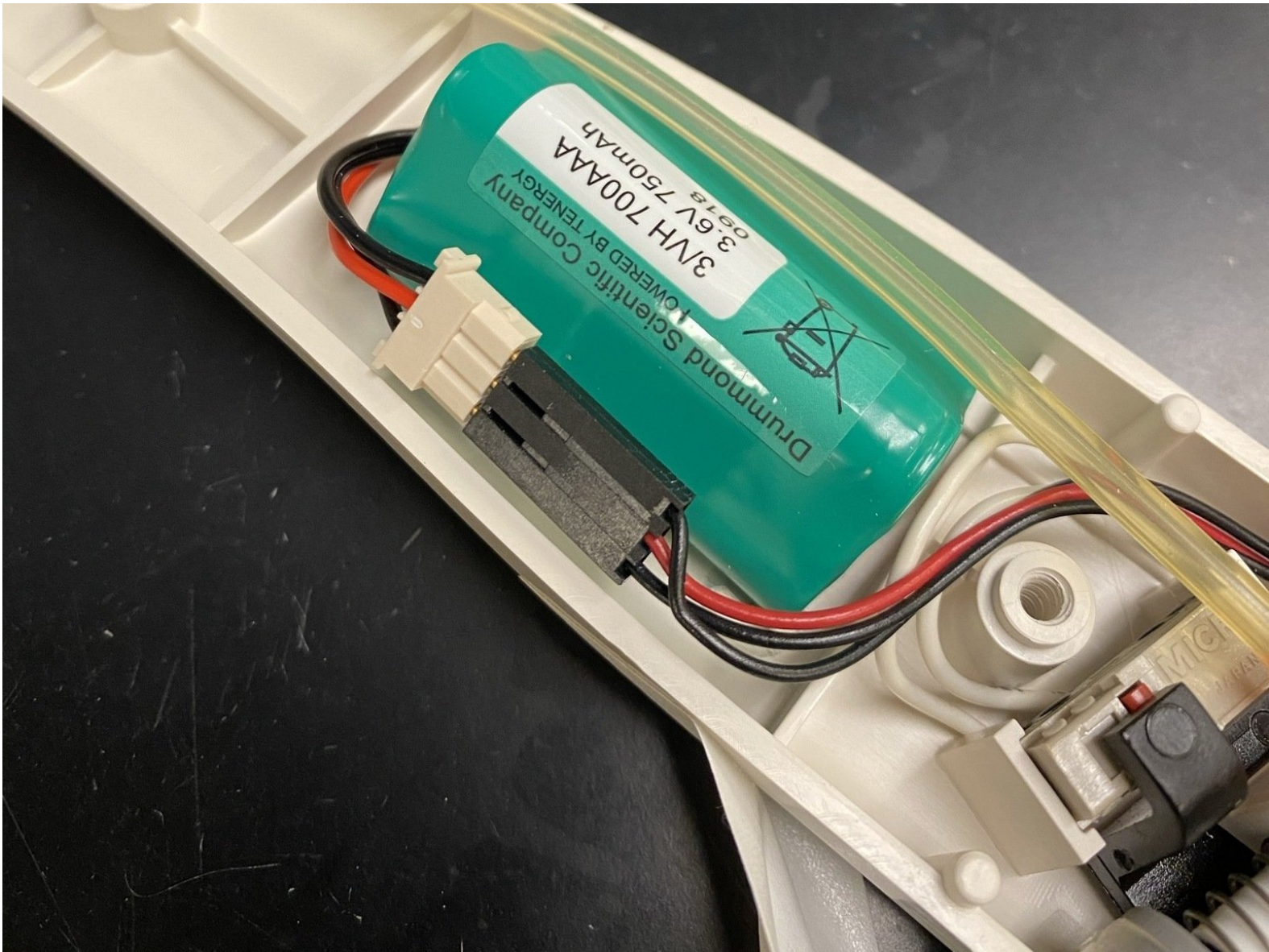




Drummond Pipet Aid XL Battery Replacement

Replace the Drummond Pipet Aid XL battery if it is not holding a charge.

Written By: Jaime



INTRODUCTION

Replacement of the Pipet Aid XL Battery is simple with only a couple standard phillips screws to remove and opening of the plastic housing. This guide will show you the simple steps to keep your liquid handling device running like new for many more experiments.



TOOLS:

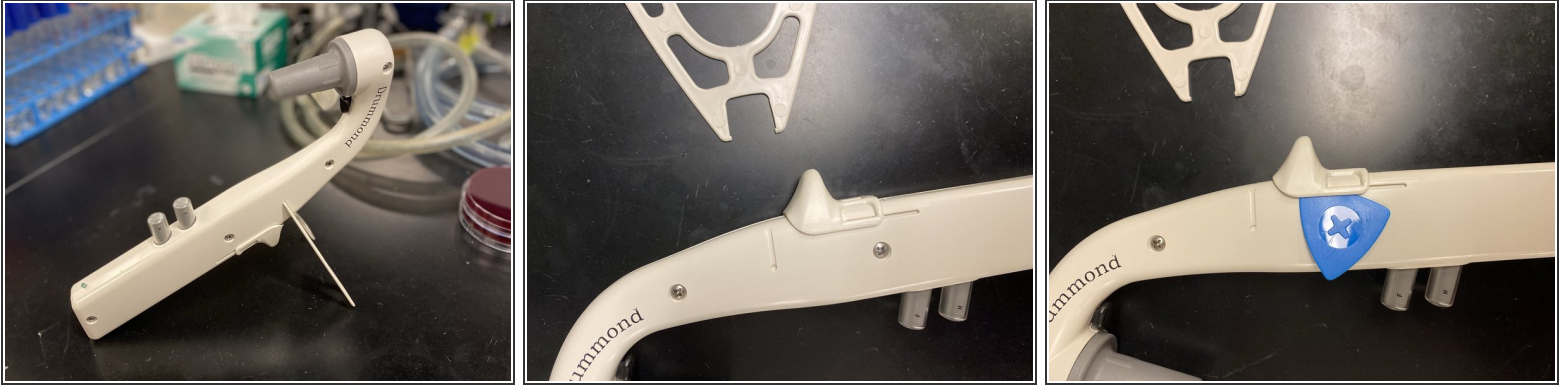
- [Phillips #3 Screwdriver](#) (1)
- [iFixit Opening Picks set of 6](#) (1)
- [Isopropyl Alcohol](#) (1)



PARTS:

- [Rechargeable Battery](#) (1)
3.6V 730mAh Ni-Mh
DR 4-000-036

Step 1 — Take off peripheral parts



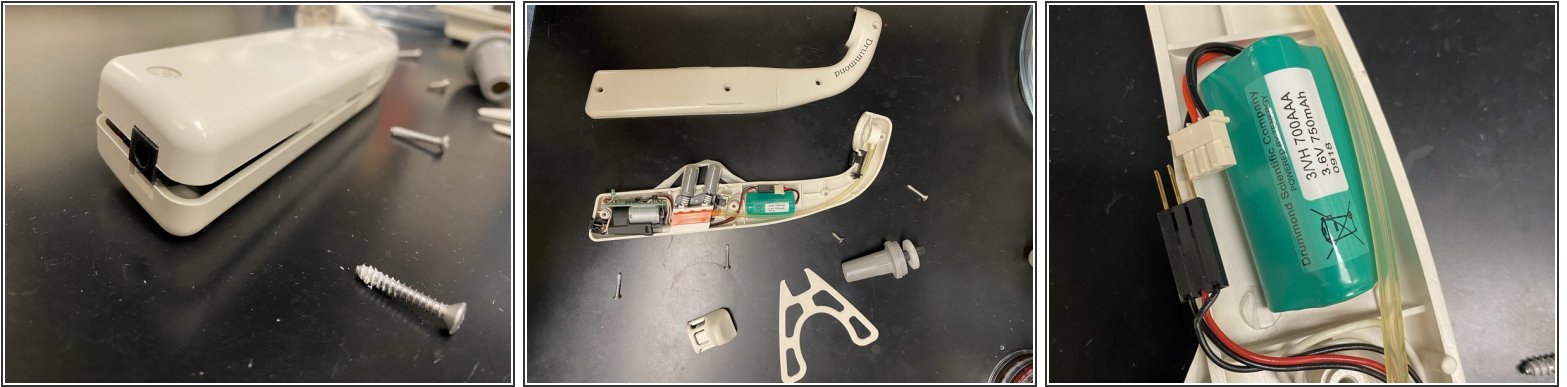
- The Drummond Pipet Aid XL peripherals include the removable plastic stand and hand rest clip.
- Remove the plastic stand by pulling it straight off the handle. This should come off easily.
- Unclip the hand rest by pulling on one side with your finger nail or by wedging a pick under neath. This side should unclip from the handle and can be pulled free with a bit of force.

Step 2 — Remove the noise piece and plastic housing



- Push in on the button near the nosepiece and turn the nosepiece counterclockwise until it pulls free from the head of the pipet aid.
- Using a large philips screw driver, remove the four screws from the handle. *Note the two different sizes of screws (the smaller one will go into the neck of the Pipet Aid.)
- Cut the identification sticker down the middle or pull off to allow the housing to come apart.
- Pull apart the plastic housing *the charging port will most likely get stuck to the housing, simply pull off the holder.
- **Be aware the mid-handle buttons might fly off as they are spring loaded! Secure these by taping to the back of the housing before completely pulling it apart.**

Step 3 — Unplug and replace the battery



- The battery should be located in the upper handle of the Pipet Aid. Unplug the connector from the board of the controller by pulling on the white clip containing the black and red wires.
- Once unclipped, the battery might be held down by adhesive. This can be removed with some isopropyl alcohol and some pulling force.
- Replace the battery by plugging into the board or connector (this depends on your model) and tucking the wires next to the battery.

To reassemble your device, follow these instructions in reverse order.