



MacBook Air 13" Late 2020 Right Speaker Replacement

Use this guide to remove or replace the right...

Written By: Carsten Frauenheim



INTRODUCTION

Use this guide to remove or replace the right speaker in an Late 2020 MacBook Air (M1).

TOOLS:

[P5 Pentalobe Screwdriver Retina MacBook Pro and Air](#) (1)
[Spudger](#) (1)
[Tweezers](#) (1)
[T3 Torx Screwdriver](#) (1)
[T4 Torx Screwdriver](#) (1)

PARTS:

[MacBook Air 13" \(A2337, Late 2020\) Right Speaker](#) (1)
[Tesa 61395 Tape](#) (1)

Step 1 — Remove the screws securing the lower case



- ❗ Before starting this procedure, you should disable your Mac's **Auto Boot** feature. Auto Boot powers on your Mac when you open the lid, and may be accidentally triggered during disassembly. [Use this guide](#) to disable Auto Boot.
- If your MacBook is running Big Sur v11.1 or later, disabling Auto Boot may not work. You can proceed normally, but make sure to disconnect the battery as soon as you're inside.

⚠ Completely power off and unplug your MacBook before you start. Close the display and flip the entire laptop upside-down.

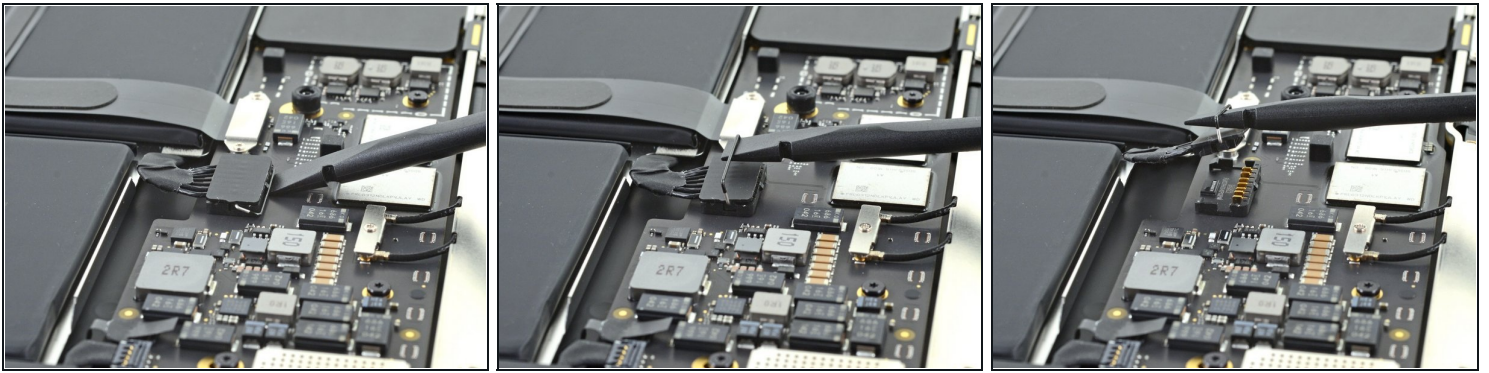
- Use a P5 driver to remove the following screws:
 - Two 7.9 mm screws
 - Two 7.3 mm screws
 - Six 2.6 mm screws
- ❗ Throughout this repair, [keep track of each screw](#) and make sure it goes back exactly where it came from to avoid damaging your MacBook.

Step 2 — Remove the lower case



- Wedge your fingers between the display and the lower case and pull upward to pop off the lower case.
 - Remove the lower case.
- ☒ To reinstall the lower case:
- Set it in place and press firmly to engage the two hidden clips underneath. You should feel and hear them snap into place.

Step 3 — Disconnect the battery



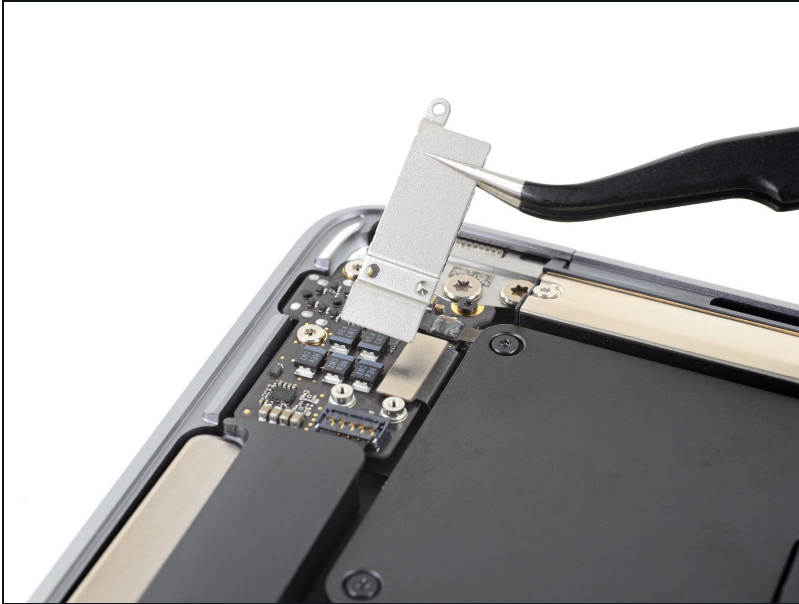
- Use the flat end of a spudger to pry up and unlatch the metal locking arm on the battery connector.
- ⚠ **Make sure the metal arm is completely free of the locking tab before lifting the battery connector. The metal locking arm should easily unlatch.**
- Lift straight up on the metal locking arm to pull the battery connector out of its socket on the logic board.
- ★ During reassembly, press the battery connector straight down into its socket, making sure it sits flush within the socket.
- If necessary, push the rear, wire side of the connector into place first, then rock the front of the connector into place.

Step 4 — Remove the audio board connector cover



- Use a T3 Torx driver to remove the three 1.4 mm screws securing the audio board connector cover.
- ⓘ If your T3 bit feels a bit too loose, you may need to use a T4.

Step 5



- Remove the audio board connector cover.

Step 6 — Disconnect the right speaker connector



- ⓘ The **right** speaker will be on your **lefthand side** when working on the MacBook, as it's laying upside down.
- Slide the pointed end of a spudger underneath the right speaker cable and pry straight up to disconnect it from the audio board.

Step 7 — Remove the right speaker screw



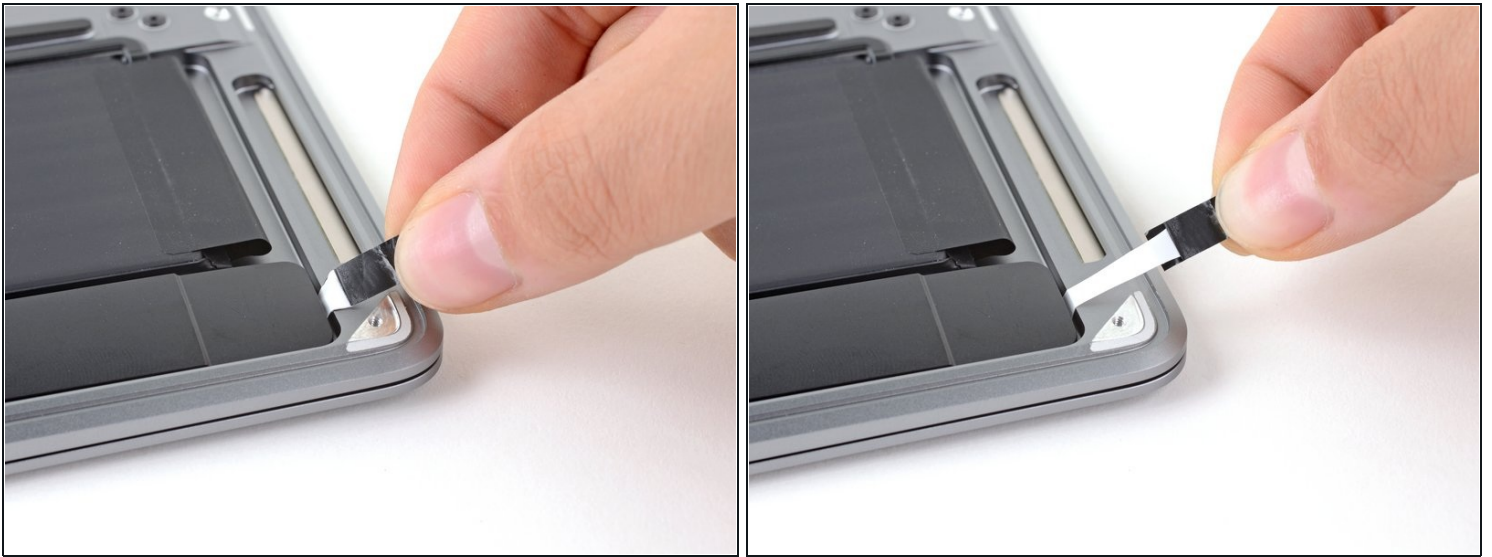
- Use a T3 Torx driver to remove the 4.2 mm screw securing the right speaker to the case.

Step 8 — Remove the speaker's stretch-release adhesive



- Use a pair of tweezers to peel back the black pull tab on the speaker's stretch-release adhesive until you can grip it with your fingers.

Step 9



- Grab the adhesive strip's pull tab and slowly pull the adhesive strip out from underneath the speaker.
 - ① Keep the angle of the adhesive strip as parallel to the laptop as you can. Try to avoid dragging it across the inside of the case.
- Pull the adhesive strip until it's freed from under the speaker.
- ① If the adhesive strip breaks, use a [heated iOpener](#), a heat gun, or a hair dryer to help remove the adhesive:
 - Apply heat to the speaker to soften the adhesive underneath.
 - Carefully slide a spudger or opening pick underneath the speaker to separate the adhesive.

Step 10 — Remove the right speaker



- Remove the right speaker.
- ☑ During reassembly, to ensure the speaker performs as expected, install a strip of [replacement adhesive](#) on its underside before placing it back into the case.

Compare your new replacement part to the original part—you may need to transfer remaining components or remove adhesive backings from the new part before installing.

To reassemble your device, follow the above steps in reverse order.

Once you've completed your repair, your laptop may not power back on until connected to power.

Take your e-waste to an [R2 or e-Stewards certified recycler](#).

Repair didn't go as planned? Check out our [Answers community](#) for troubleshooting help.