



Logitech M510 Teardown

We will tear down the Logitech M510

Written By: Xavier



INTRODUCTION

Today we are going to be taking apart the Logitech M510 mouse.



TOOLS:

- [Phillips #0 Screwdriver](#) (1)
 - [Scotch tape](#) (1)
-

Step 1 — Logitech M510 Teardown



- Let's get started!

Step 2



- Flip your mouse over

Step 3



- Remove the batteries by pulling on the tab.

⚠ If you do not plan on putting it back together, ensure you dispose of the batteries properly.

Step 4



- Take the battery pull tab that is circled in red and tape it to the area that is circled in blue
- ⓘ This allows you to access the screws that are hidden by the battery pull tab

Step 5



- Unscrew the two screws that are circled in yellow.

Step 6



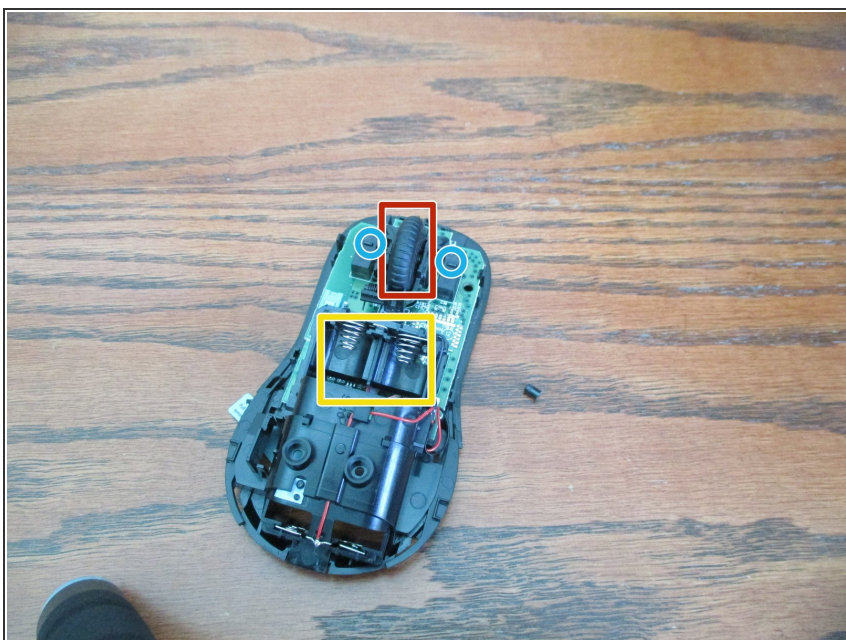
- Remove the tape

Step 7



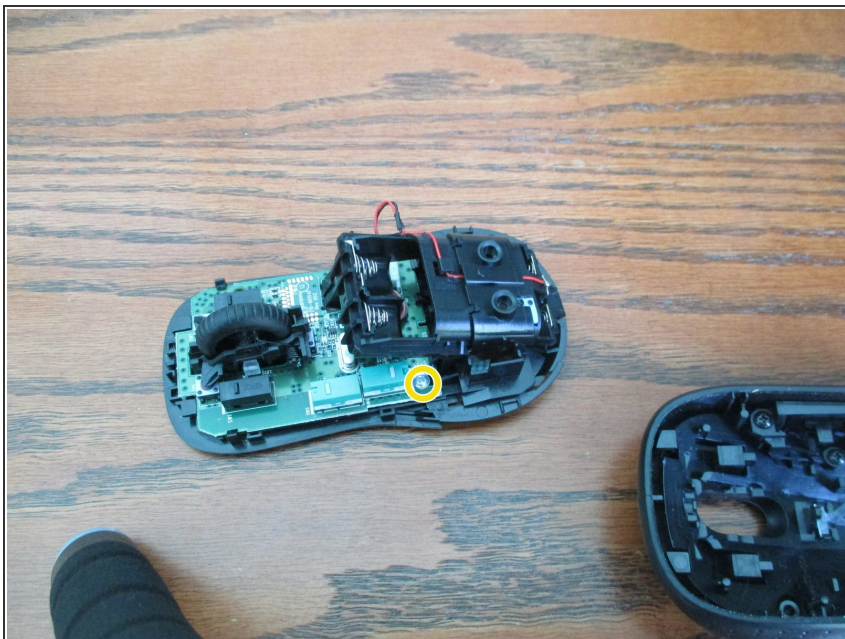
- Now you can easily separate the bottom and the top of the device. (Just give it a little tug)

Step 8



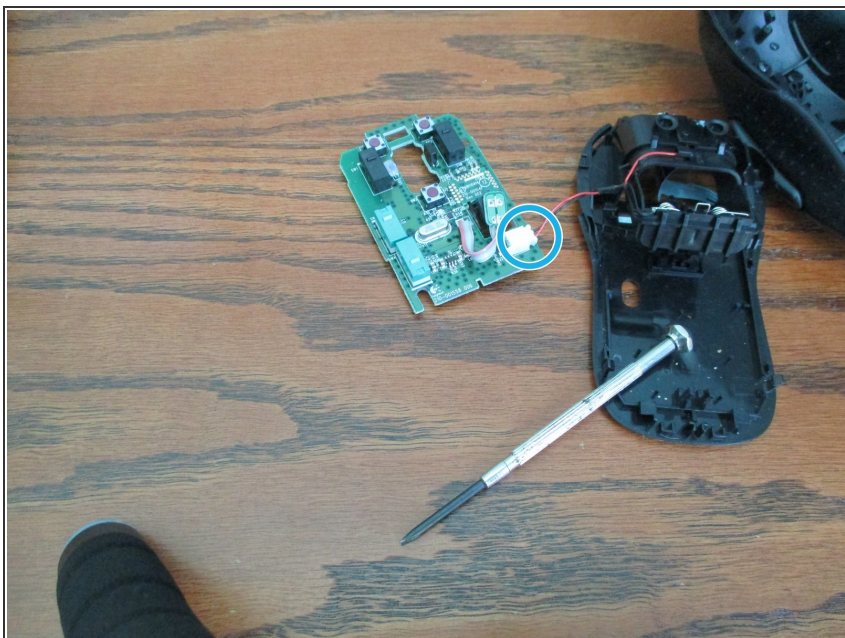
- Okay now that we've got it separated we can have a sneak peek inside
- The scroll wheel.
- The battery area
- Mouse buttons

Step 9



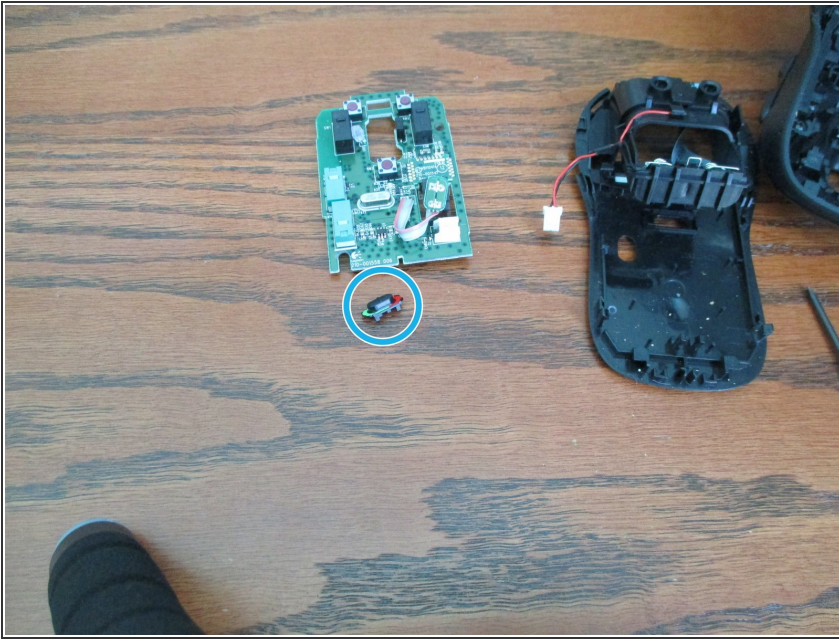
- Now unscrew the screw that is circled in yellow

Step 10



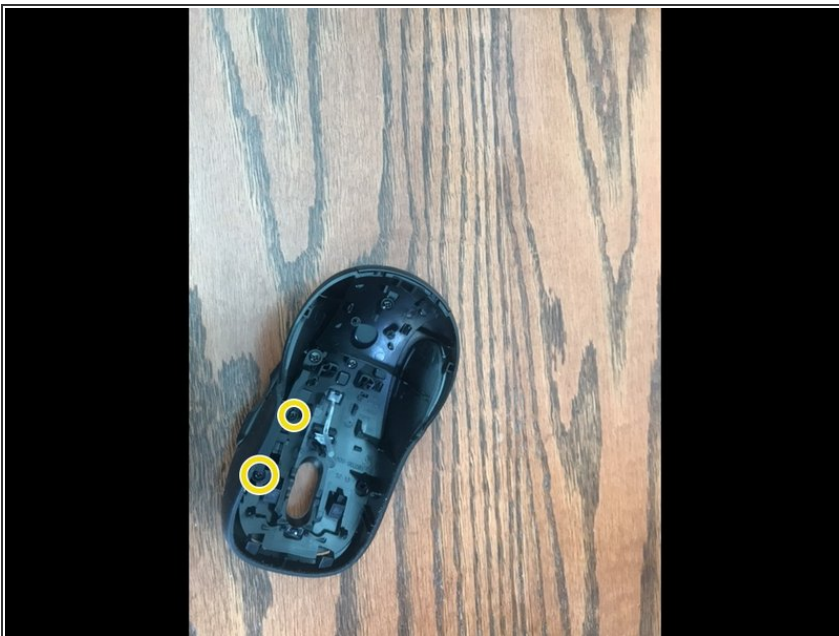
- Now disconnect the cable there is circled in blue by unplugging it from the logic board.

Step 11



- We have taken apart the bottom half, So let's take apart the top half.
- This is the on-off switch.

Step 12



- Let's get started disassembling the top half
- Remove the two screws circled in yellow.

Step 13



- Okay now that we've got that done, lets continue

Step 14



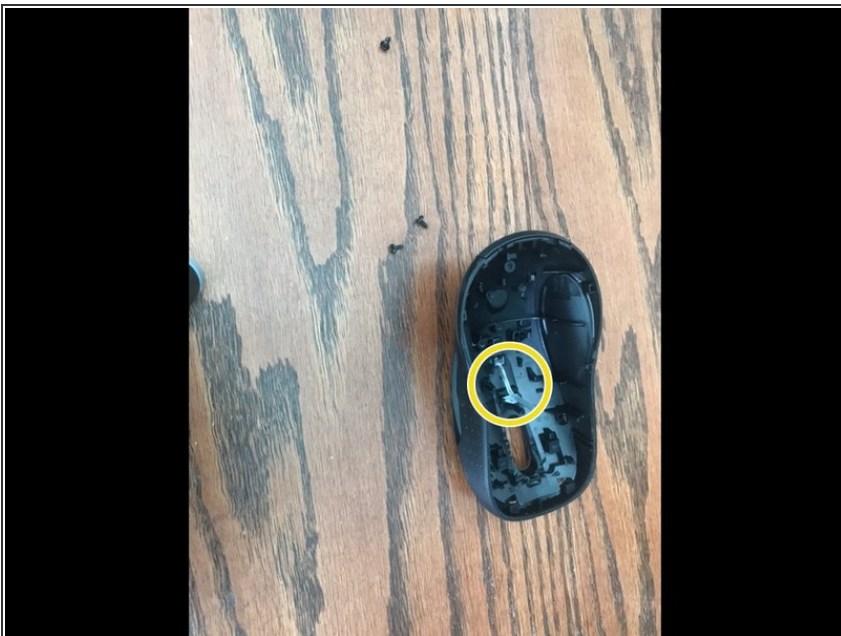
- Remove the screw circled in yellow

Step 15



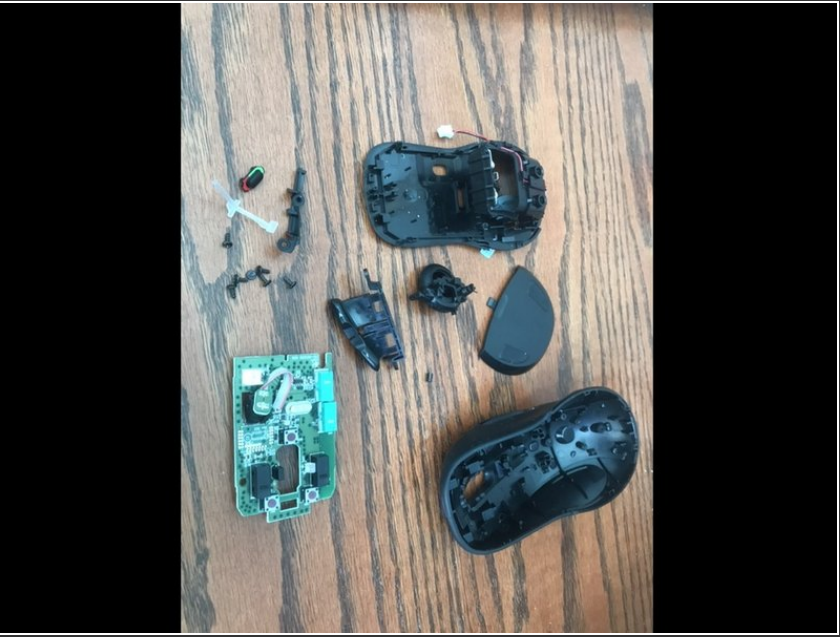
- Now you can pop out the scroll buttons.

Step 16



- Now pop out the piece circled in yellow

Step 17



- And there we go we have disassembled the entire mouse.