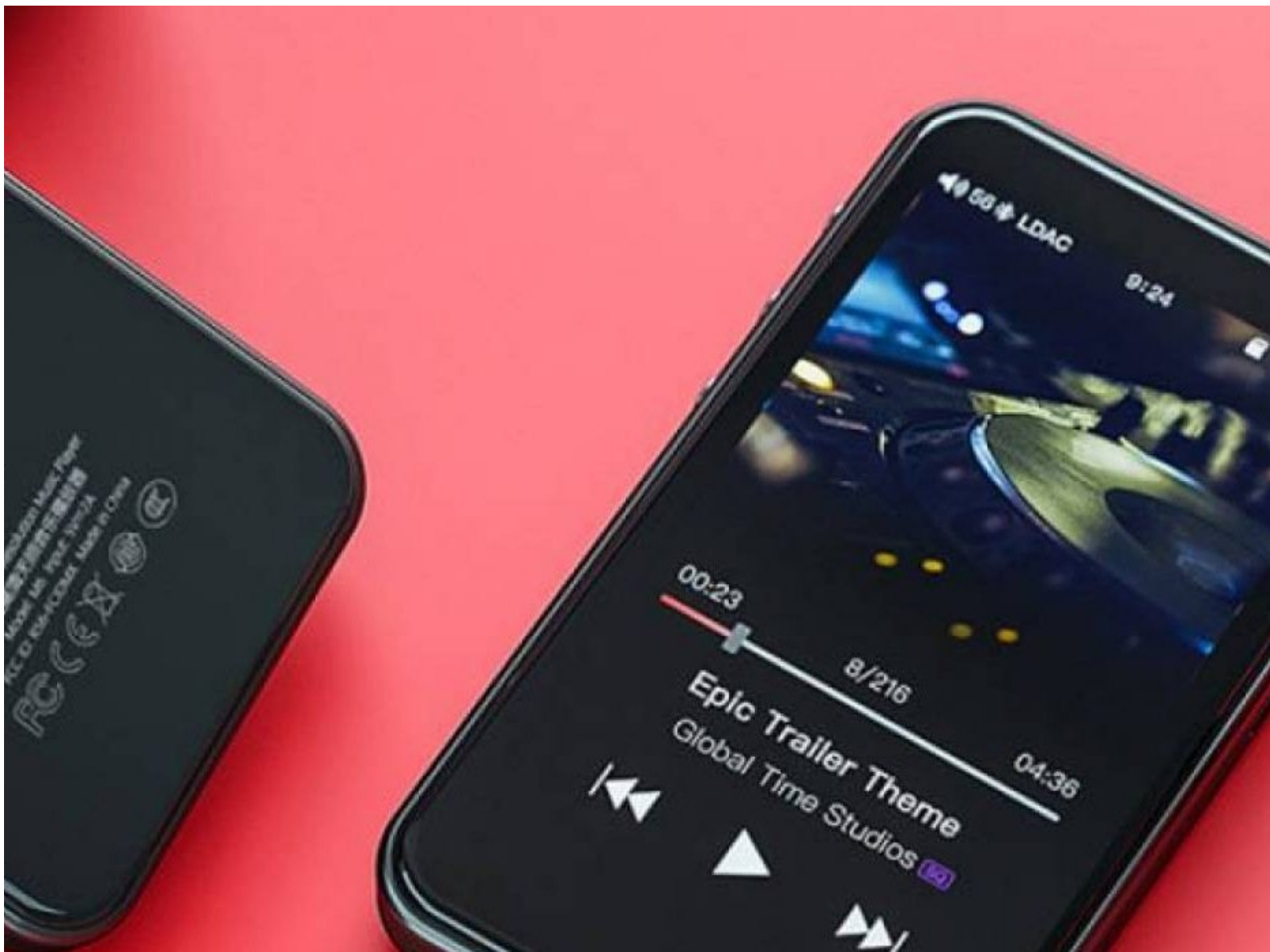




# Fiio M6 Teardown

I created this Fiio M6 teardown to orient people on how to open the device for an LCD or battery replacement

Written By: LazarusLong



---

# INTRODUCTION

This is a simple teardown of the device showing the components and how to access them.

---



## TOOLS:

- [Heat Pad](#) (1)
  - [Metal Spudger](#) (1)
  - [iFixit Opening Tools](#) (1)
-

## Step 1 — Fiio M6 Teardown



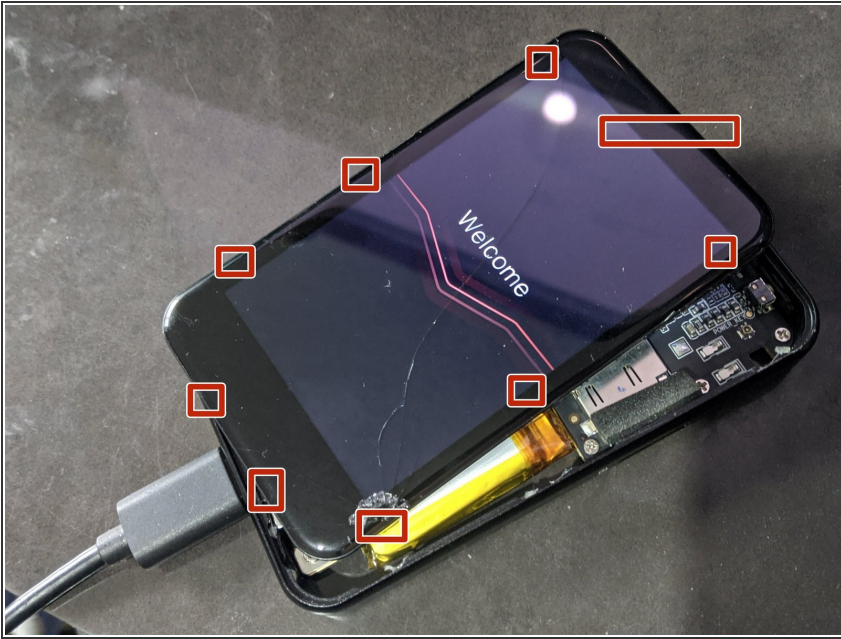
- This is the full video guide, it begins after i tried to open it from the back. The device should be open from the screen.

## Step 2



- Heat the device to 110C for 2-3 minutes.

## Step 3



- Pry the sides of the device carefully (or not if your screen is shattered) . There are 8 plastic tabs holding the screen to the frame, with a little glue in each tab. The top tab is a big tab, so you must begin from the bottom.



## Step 4



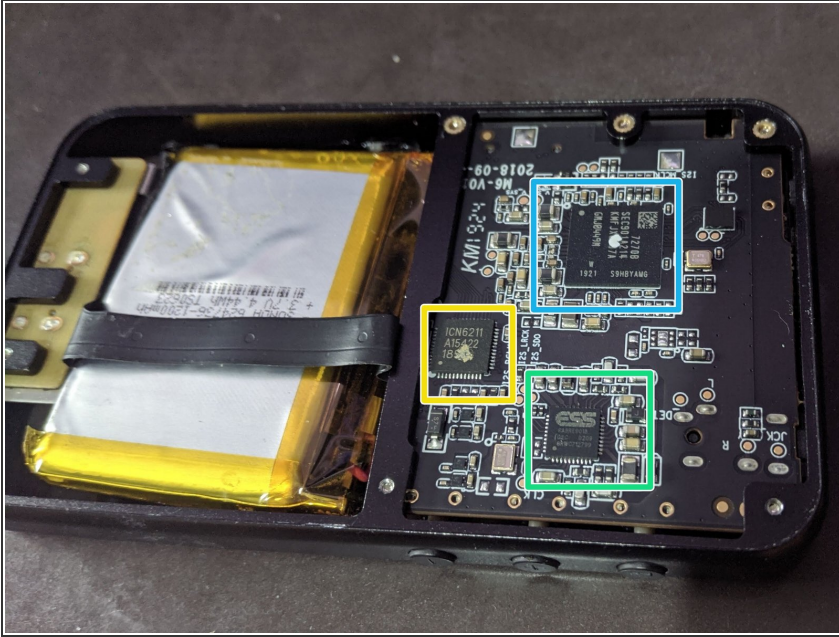
- Disconnect the LCD ribbon connector in the middle of the frame and you can separate the LCD from the frame. At this point you can put a replacement LCD .

## Step 5



- Top view of the device opened, the battery is soldered with a little of conformal coating on top of the pads.

## Step 6



- Back view of the device, The part as identified:
- ES9018Q2C DAC
- ICN6211 MIPI LCD controller
- Exynos 7270, this is a highly integrated chip for wearables, It includes the normal Samsung SOC characteristics, with stacked DRAM & eMMC integrated into the package. That is why the PCB don't have any DRAM or storage chips around.

## Step 7



- I removed the backplate, but for LCD or battery replacement is not necessary. The battery was glued to the back and there is an antenna on the top .



## Step 8



- Battery Detail.
- Manufactured by SUNDA.
- 3.7v to 4.2v
- 1200mAh
- 624736 pouch form factor