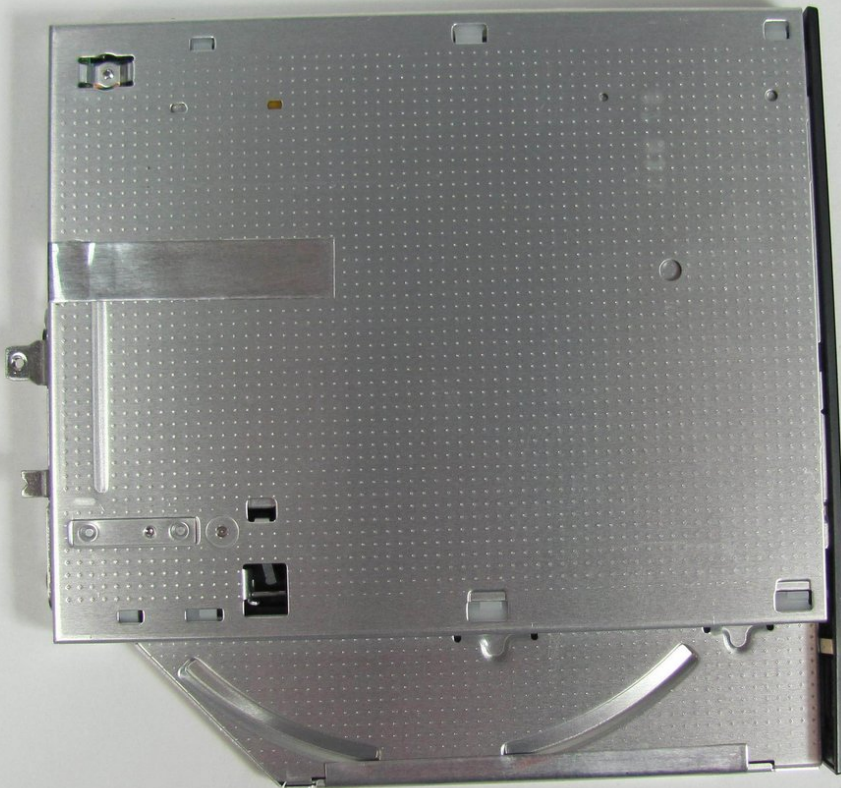




# Toshiba Satellite L45-S7423 Optical Drive Replacement

This guide shows the user how to remove the optical drive of the Toshiba Satellite L45-S7423.

Written By: Stephen Sippel



---

## INTRODUCTION

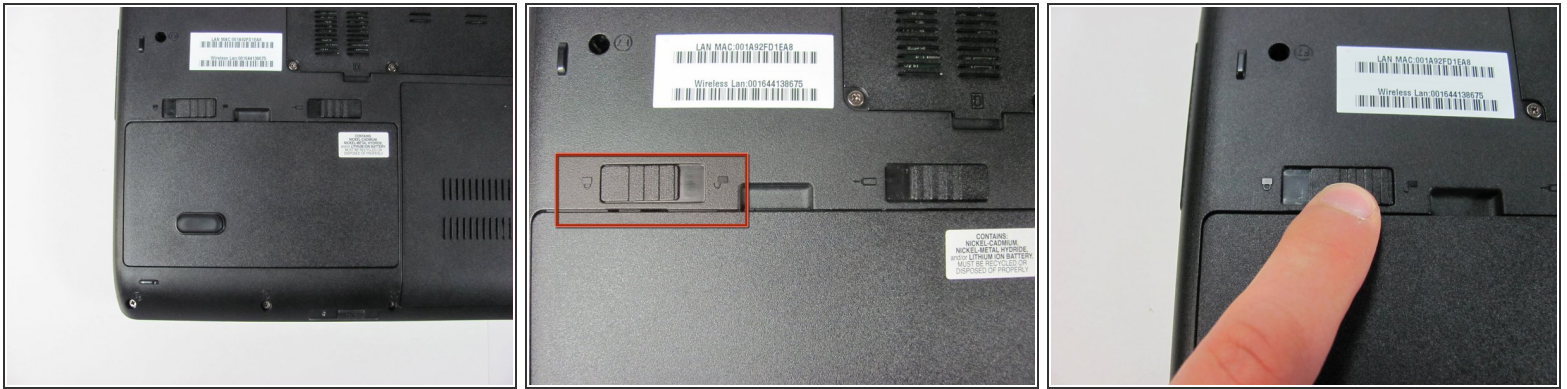
The optical drive reads the CD/DVD when inserted into the laptop. It is not unusual for the optical drive to go stop working or malfunction as there are numerous moving parts. This device is designed to be easily replaced in the case it does malfunction.



### TOOLS:

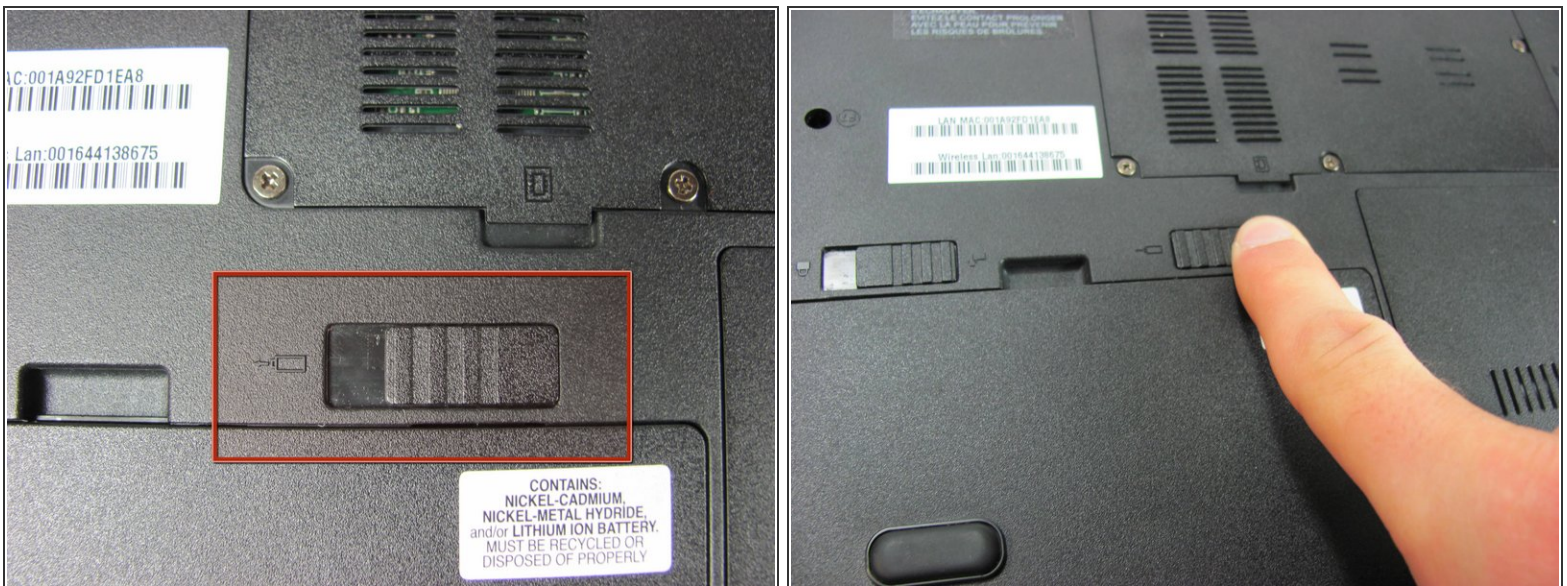
- [Phillips #00 Screwdriver](#) (1)
  - [Spudger](#) (1)
-

## Step 1 — Battery



- Make sure the battery lock switch is switched to the unlocked position.
- The battery is unlocked when the battery lock switch is slid to the side with an image of an unlocked lock.

## Step 2



- Slide the battery release switch to the left.
- ⓘ The switch is spring loaded, so you must hold the switch in place while removing the battery.

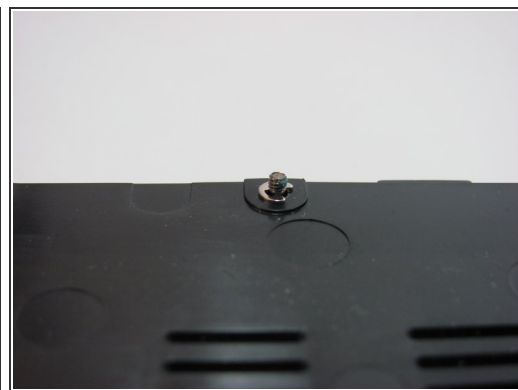


### Step 3



- Using a finger, lift up the battery.
- ☒ The battery release switch must be held in place.

### Step 4 — Optical Drive



- Remove the two screws holding the hard drive panel down.
- ⓘ These screw are permanently fastened to the panel; they are designed to be removed only partially.

## Step 5



- Use a finger to lift up on the tab and remove the panel.

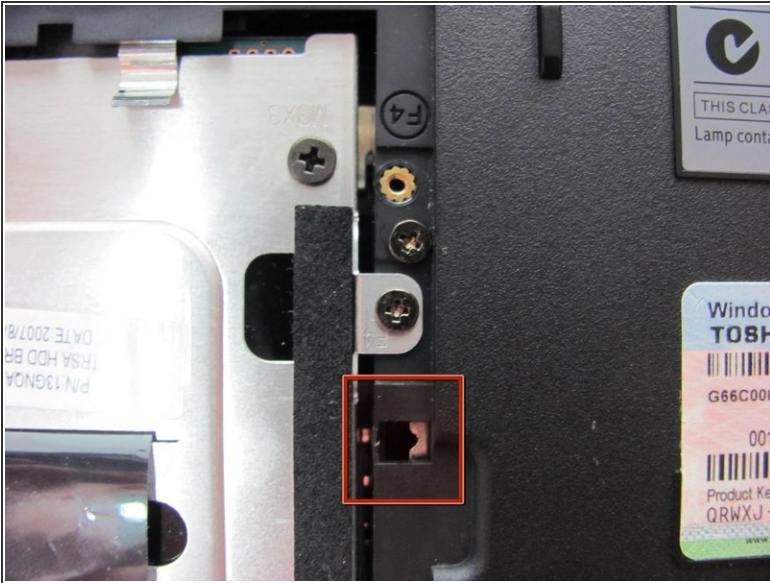
## Step 6



- Remove the screw that holds in place the optical drive.
  - One 4.6 mm Phillips screw.



## Step 7



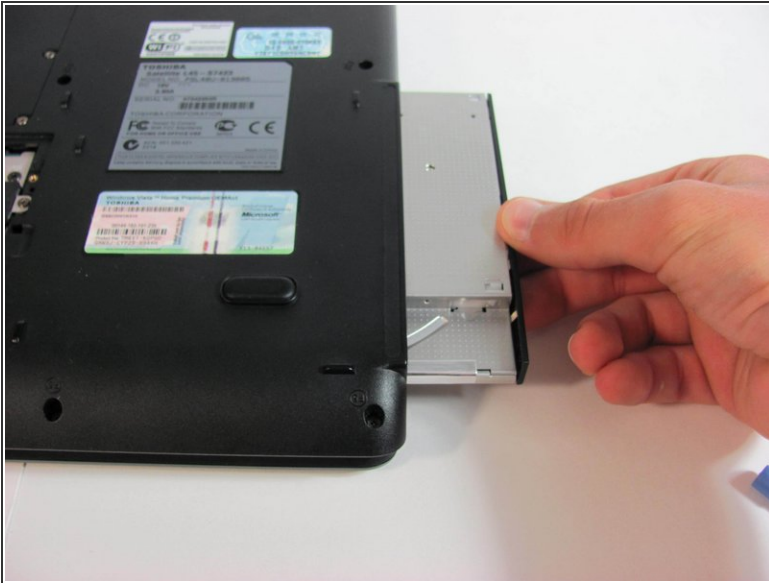
- Locate the small rectangular hole and insert the spudger.
- Gently slide the metal flange to the right to dislodge the optical drive.

## Step 8



- The optical drive will become partially exposed.

## Step 9



- Pull the optical drive to remove it from the computer body.

To reassemble your device, follow these instructions in reverse order.