



Sony DualSense Controller Trigger Assembly Replacement

Follow this guide to replace the trigger...

Written By: Sam Omiotek



INTRODUCTION

Follow this guide to replace the trigger assemblies on a Sony PlayStation 5 DualSense controller.

These assemblies contain both the triggers and the adaptive resistance motors.

Note: This guide is for DualSense controllers with an FCC ID ending in **1**. Check the back of your controller to verify your model. If yours ends in **A**, there will be differences in the internal design.

TOOLS:

1 x Opening Picks (1)
Spudger (1)
Phillips #00 Screwdriver (1)
Tweezers (1)

PARTS:

PlayStation DualSense Controller
Trigger Button Cover Set (1)

Step 1 — Unclip the right end of the middle trim



 **Disconnect and power down your controller before you begin.**

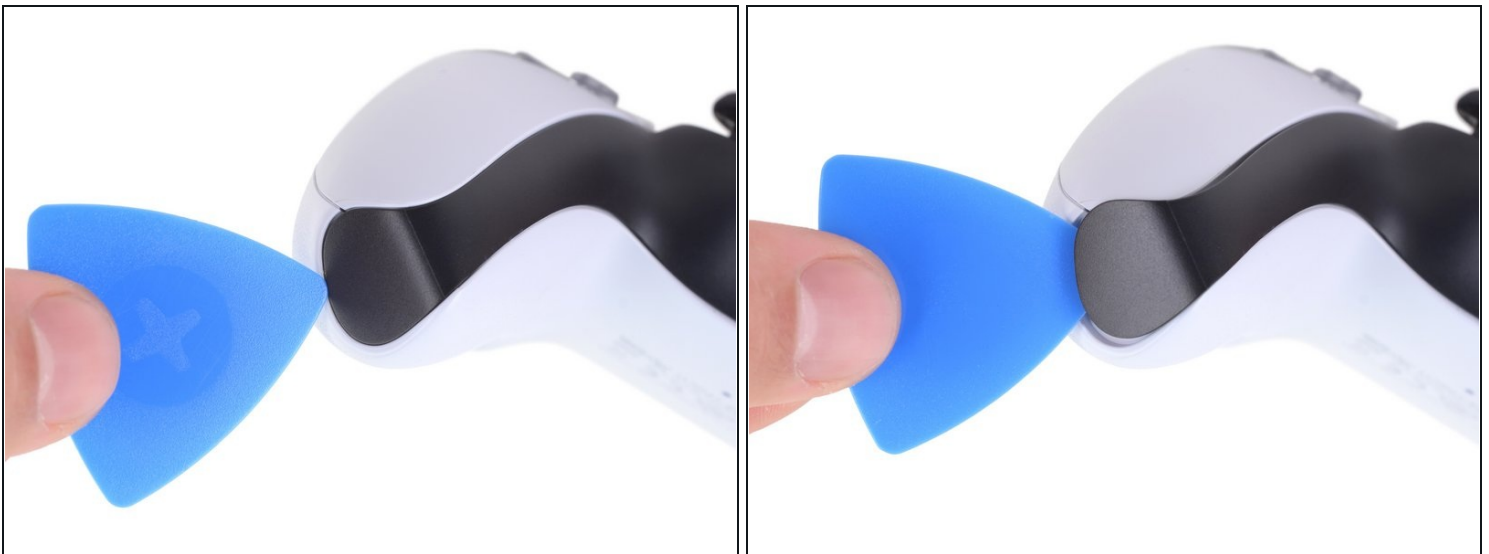
- Insert an opening pick underneath the middle trim at the bottom-right corner of the controller to release the clips securing it to the case.

Step 2 — Unclip the lower-right edge of the middle trim



- Slide the opening pick along the lower-right edge of the middle trim to release the clips securing it to the case.

Step 3 — Unclip the left end of the middle trim



- Insert an opening pick underneath the middle trim at the bottom-left corner of the controller to release the clips securing it to the case.

Step 4 — Unclip the lower-left edge of the middle trim



- Slide the opening pick along the lower-left edge of the middle trim to release the clips securing it to the case.

Step 5 — Remove the middle trim



- Use your fingers to lift up the bottom edge of the middle trim to release the remaining clips.
- Lift the middle trim over the joysticks to remove it.

Step 6 — Remove the L1 button



- Insert the flat end of a spudger into the gap above the **L1** button.
 - ① Cover the button with your [thumb](#) to prevent it from ejecting across the room.
- Pry upward to remove the **L1** button.

Step 7 — Remove the R1 button



- Insert the flat end of a spudger into the gap above the **R1** button.
 - ① Cover the button with your [thumb](#) to prevent it from ejecting across the room.
- Pry upward to remove the **R1** button.

Step 8 — Remove the rear case



- Use a Phillips screwdriver to remove the two 6.4 mm screws securing the bottom corners of the lower case.

Step 9



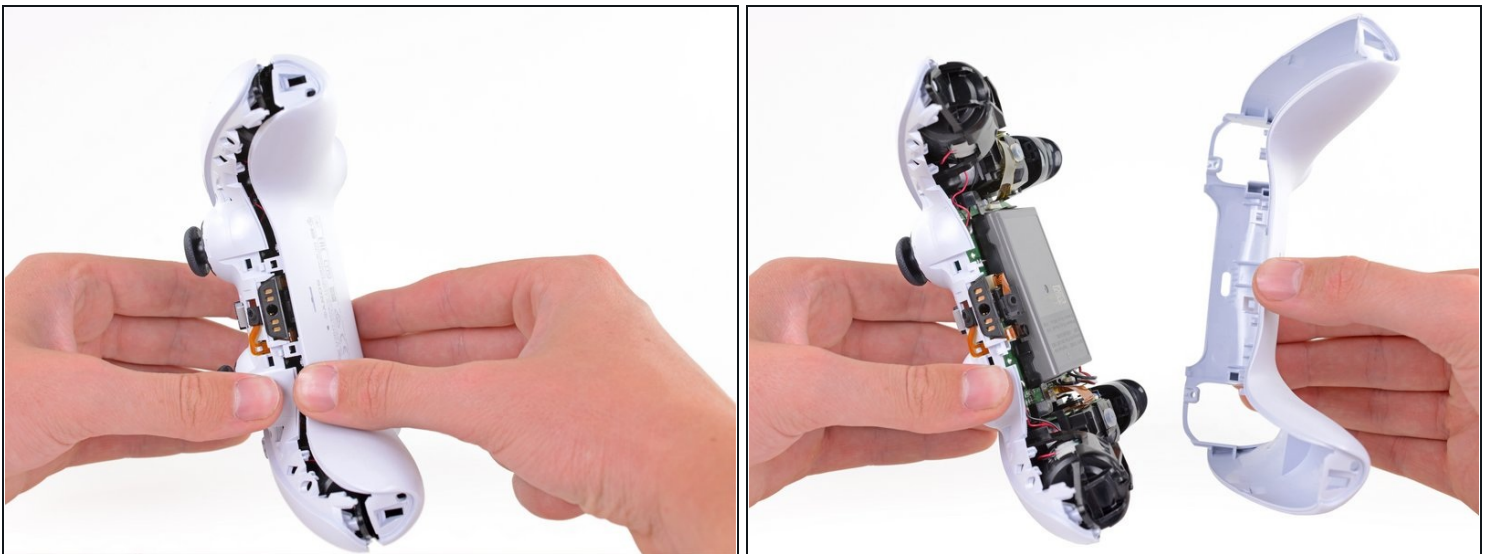
- Use a Phillips screwdriver to remove the two 6.4 mm screws behind the **L1** and **R1** buttons.

Step 10



- Use the pointed edge of a spudger to unclip the two clips on either side of the headset jack.

Step 11



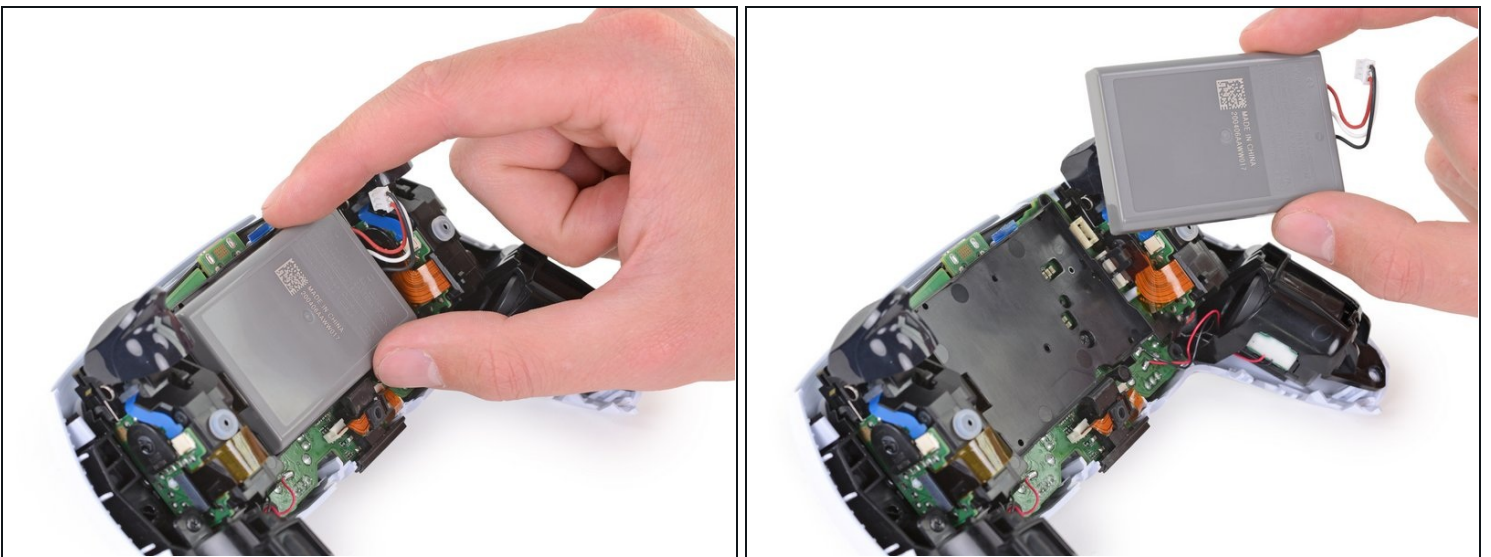
- Remove the rear case.
- ⓘ On some revisions, the rear case is held with two more clips next to the previously removed bumpers. If the rear case doesn't open without force, check for those clips.

Step 12 — Disconnect the battery



- Use a pair of [tweezers](#) or your fingers to disconnect the battery from the motherboard.
⚠ Grip the connector, not the wires, when disconnecting.

Step 13 — Remove the battery



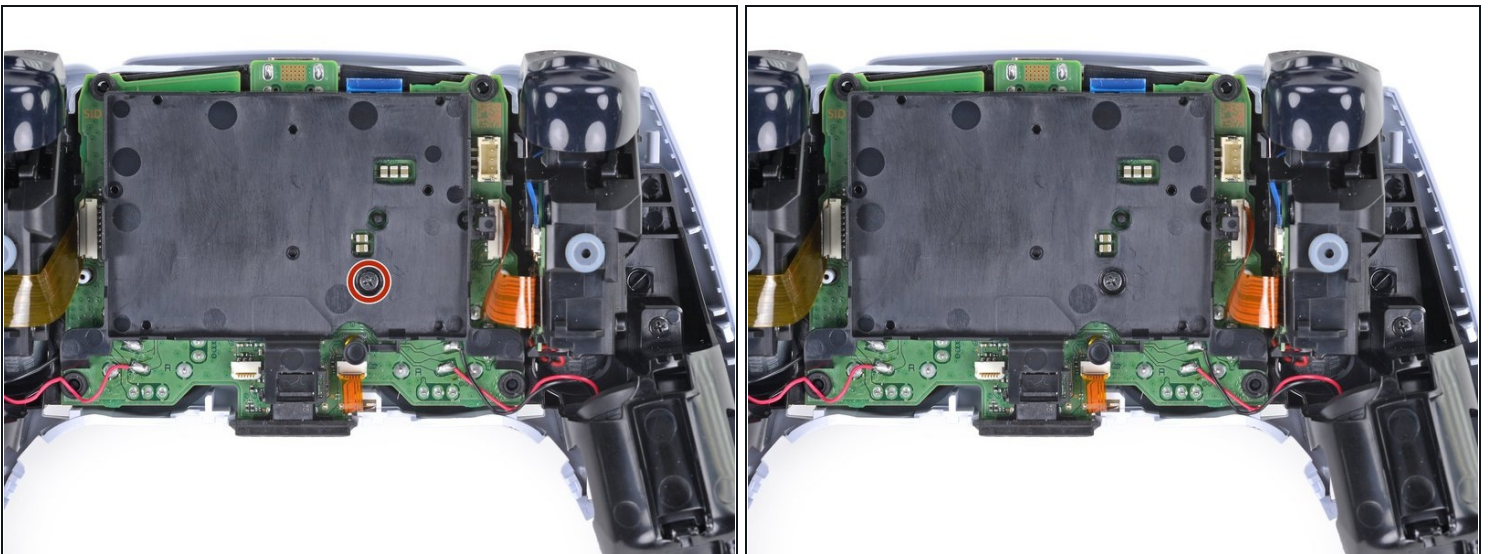
- Lift the battery straight out of the battery bracket.

Step 14 — Remove the lower microphone



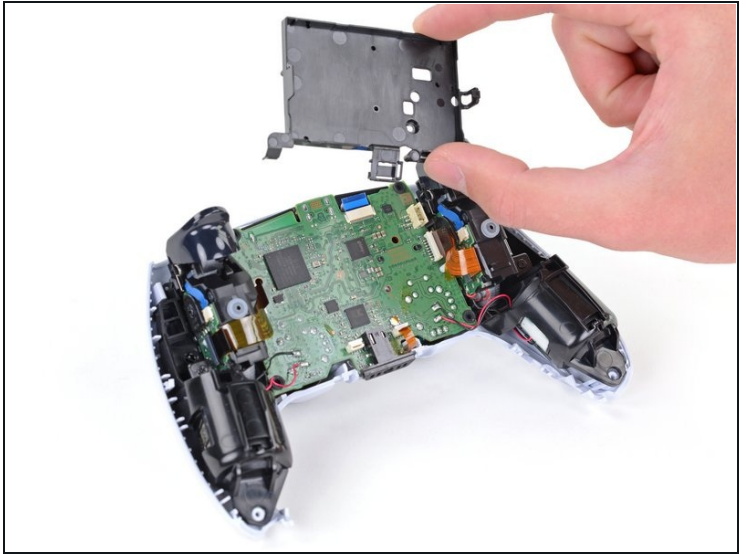
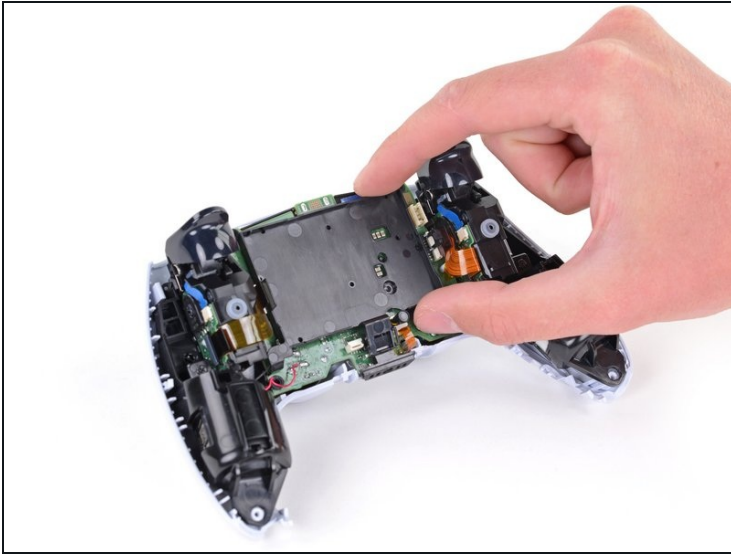
- Grab the lower microphone ribbon cable pull tab with your fingers or a pair of [tweezers](#) and disconnect it from the motherboard.

Step 15 — Remove the battery bracket



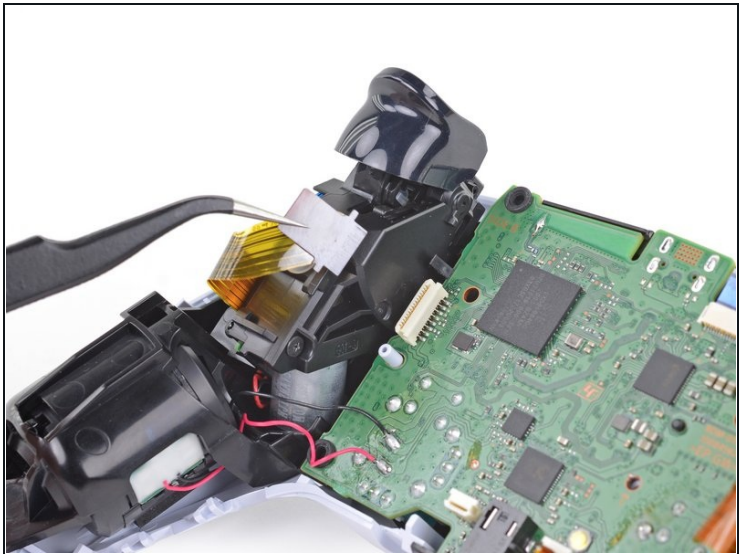
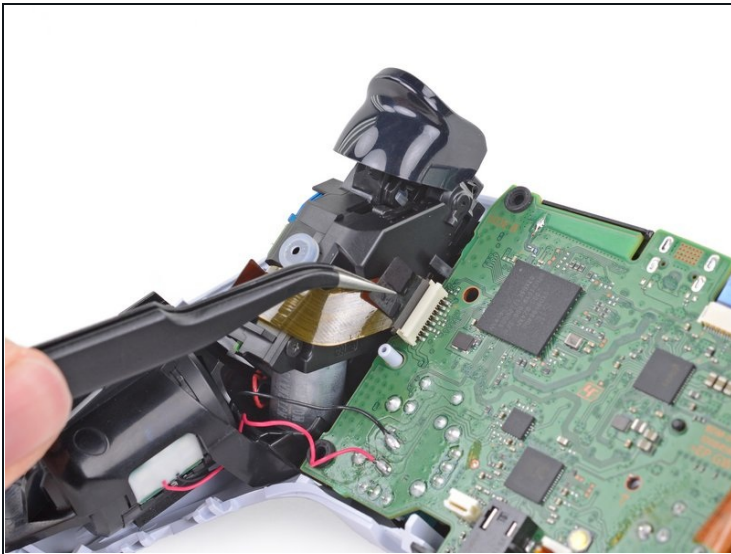
- Use a Phillips screwdriver to remove the 6.4 mm screw securing the battery bracket.

Step 16



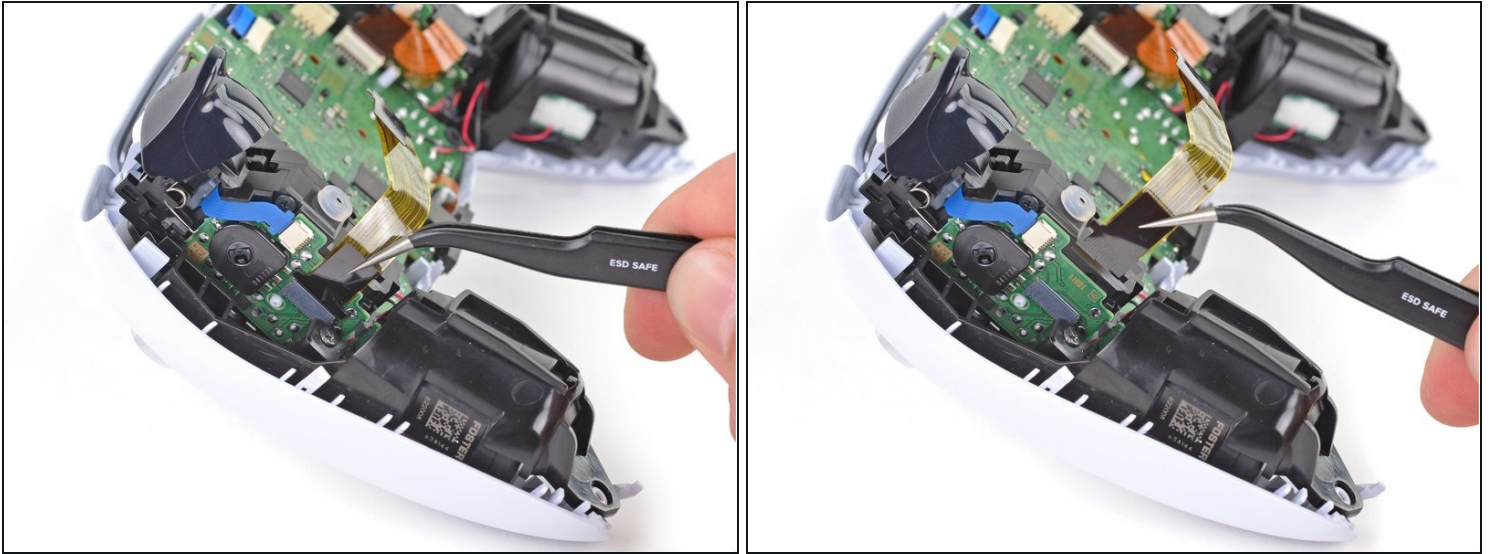
- Lift the battery bracket out of the motherboard.

Step 17 — Disconnect the right trigger assembly



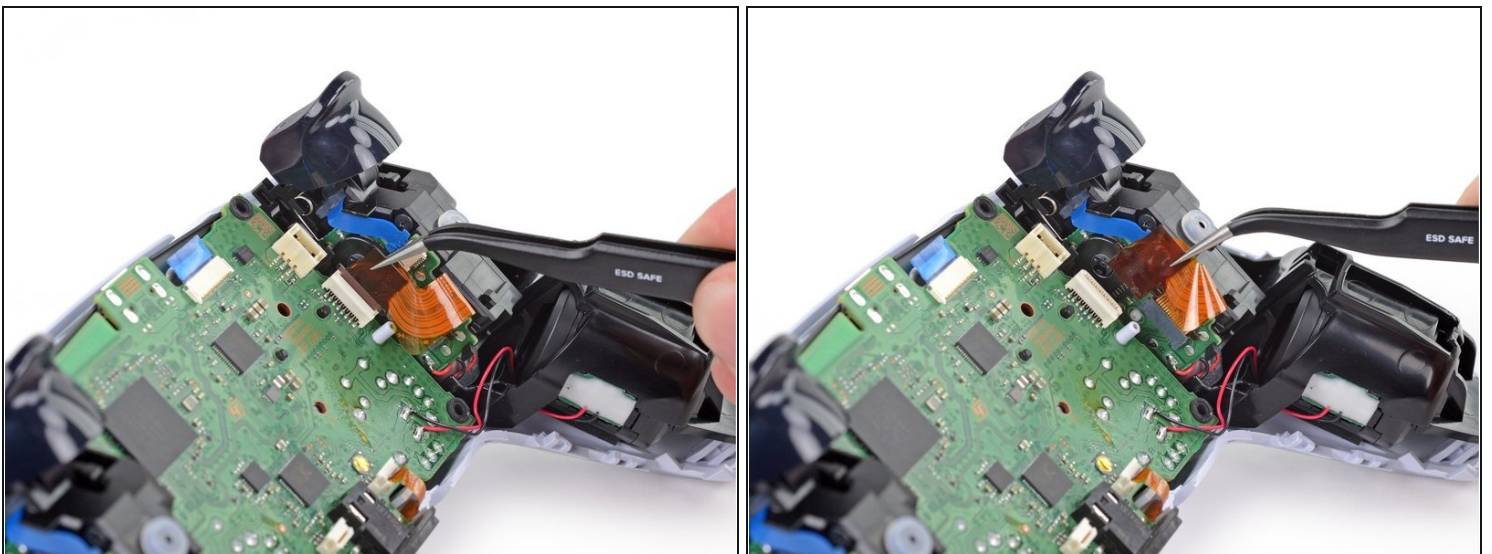
- Grip the right trigger assembly ribbon cable pull tab with a pair of tweezers or your fingers and pull up to disconnect it from the motherboard.
 - ⓘ Do not completely remove the ribbon cable yet.

Step 18



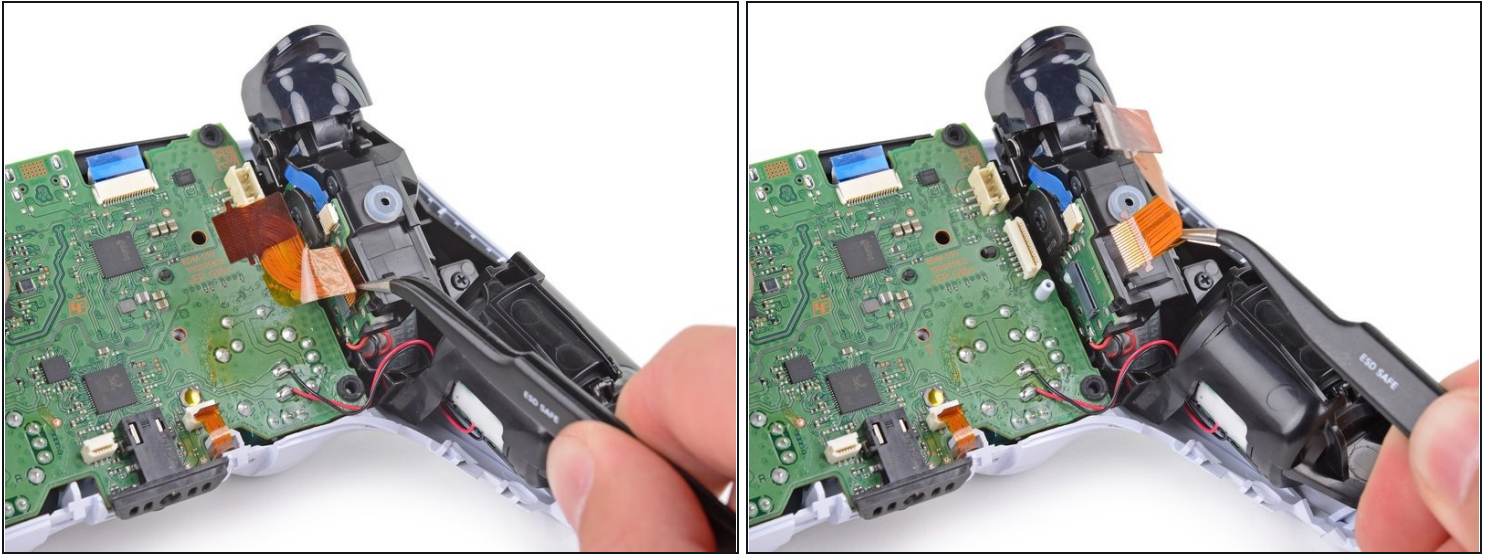
- Grip the right trigger assembly ribbon cable pull tab with a pair of tweezers or your fingers, and pull up to disconnect it from the trigger assembly.
- Remove the ribbon cable.

Step 19 — Disconnect the left trigger assembly



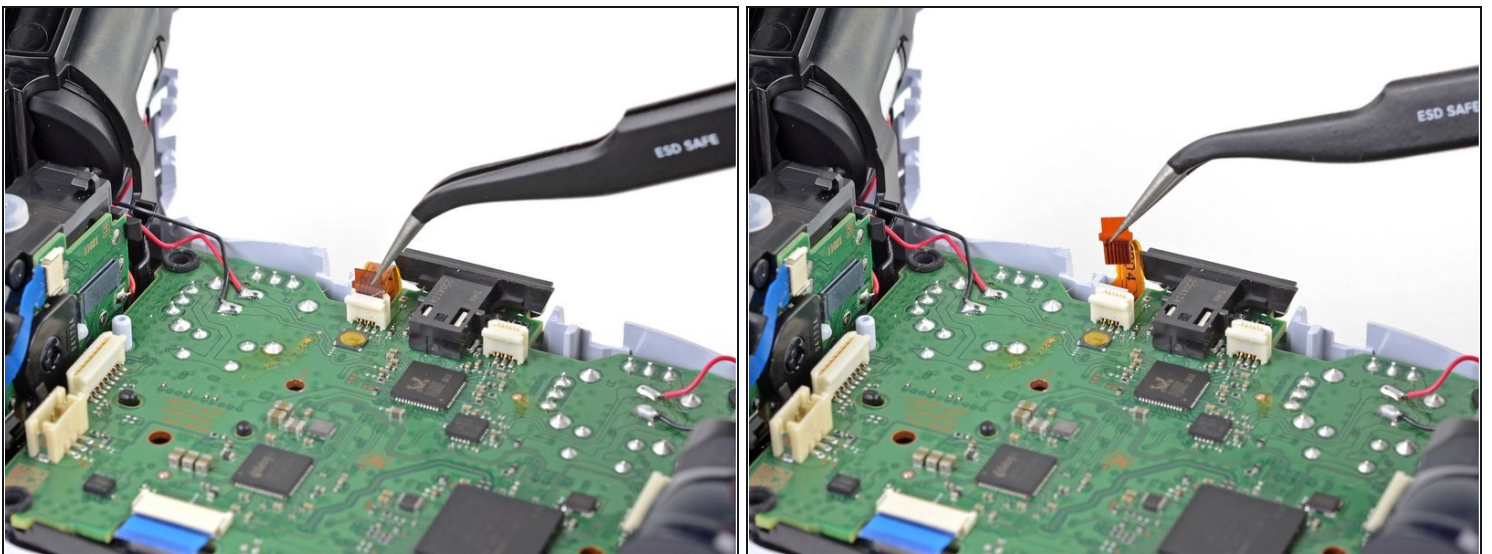
- Grip the left trigger assembly ribbon cable pull tab with a pair of tweezers or your fingers and pull up to disconnect it from the motherboard.
- ① Do not completely remove the ribbon cable yet.

Step 20



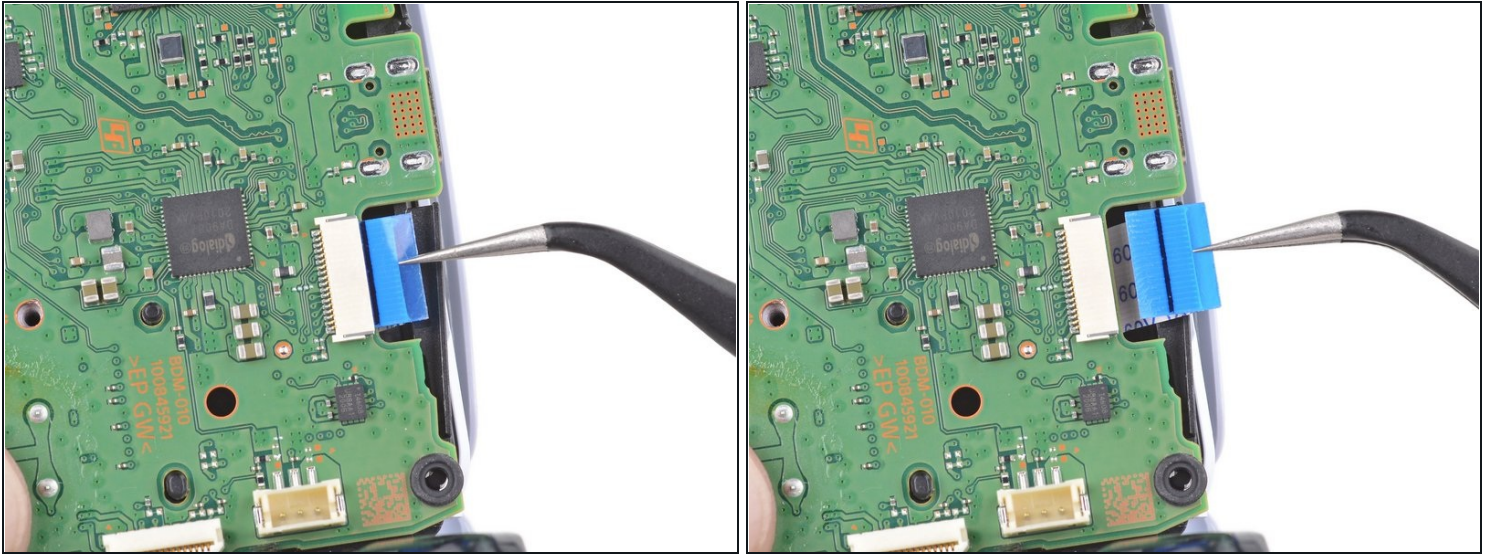
- Grip the left trigger assembly ribbon cable pull tab with a pair of tweezers or your fingers, and pull up to disconnect it from the trigger assembly.
- Remove the ribbon cable.

Step 21 — Disconnect the upper microphone



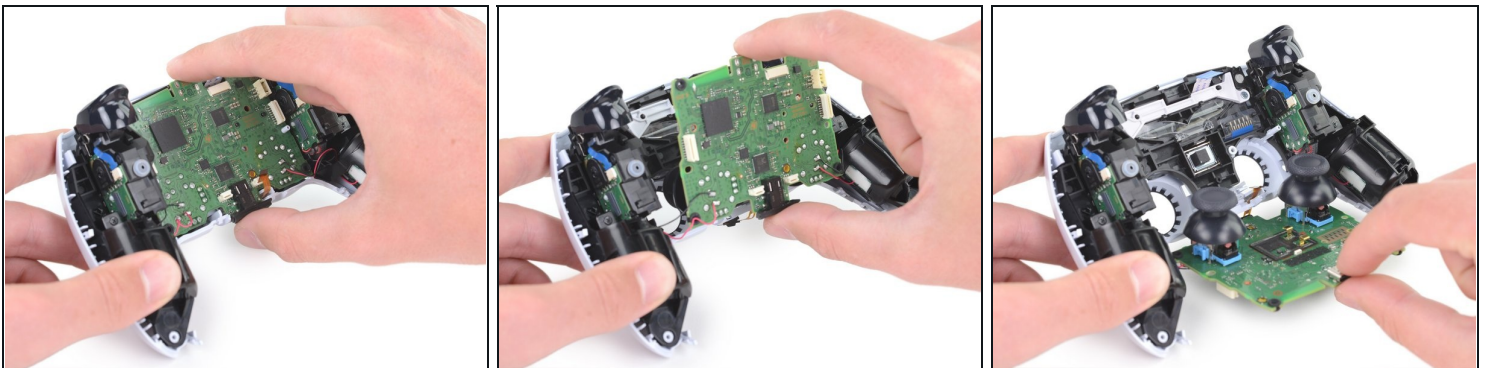
- Use a pair of tweezers or your fingers to grip the upper microphone ribbon cable pull tab, and pull up to disconnect it from the motherboard.

Step 22 — Disconnect the touchpad



- Use a pair of tweezers or your fingers to grip the touchpad ribbon cable pull tab, and pull it straight out of the motherboard connector.

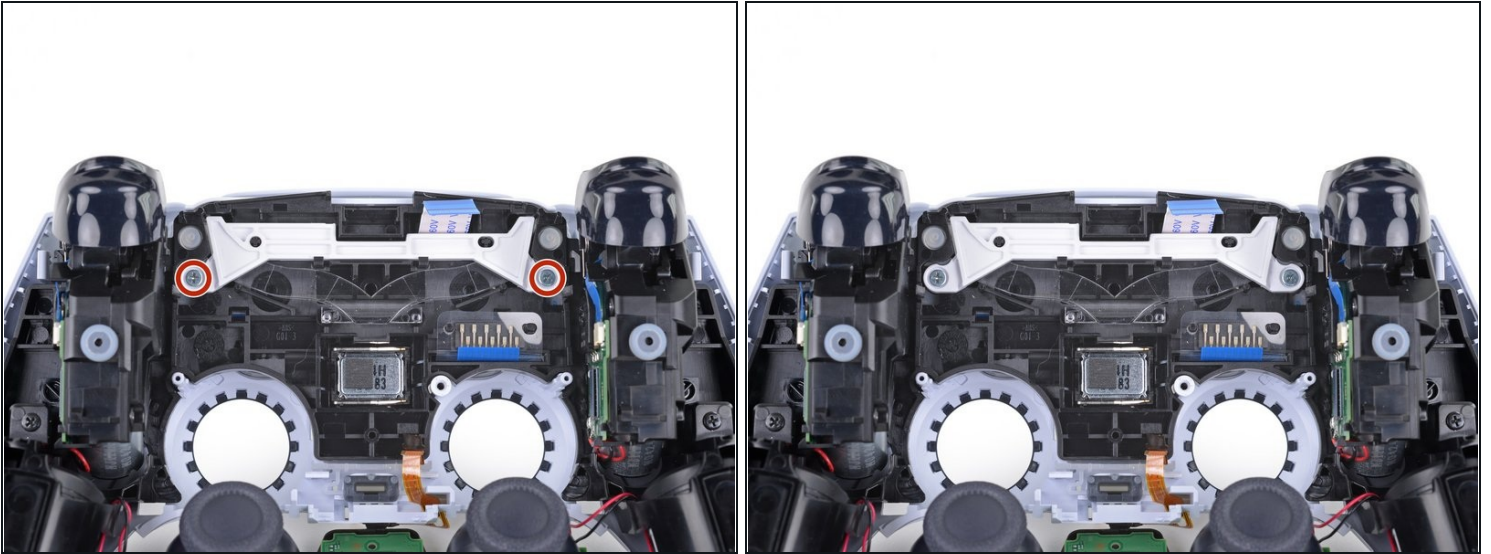
Step 23 — Lift out the motherboard



- Carefully guide the joysticks through the front case and lift the motherboard out.

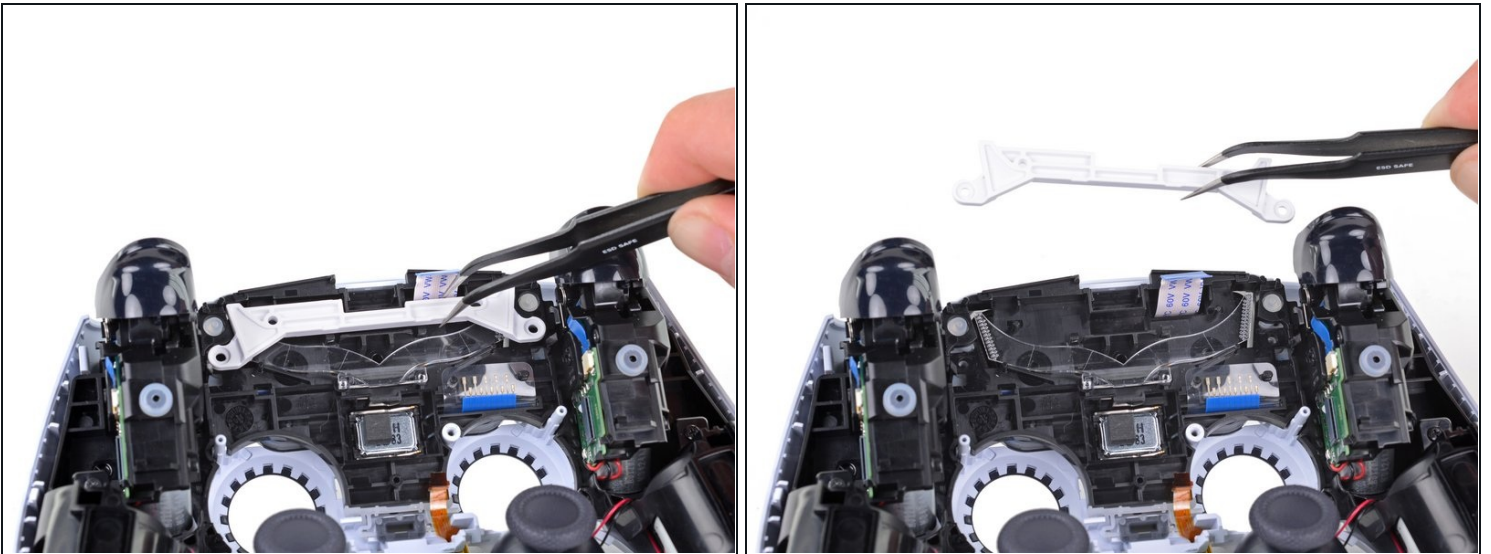
⚠ Do not completely remove the motherboard. There are four soldered wires tethering the motherboard to the vibrator motors.

Step 24 — Remove the light guide



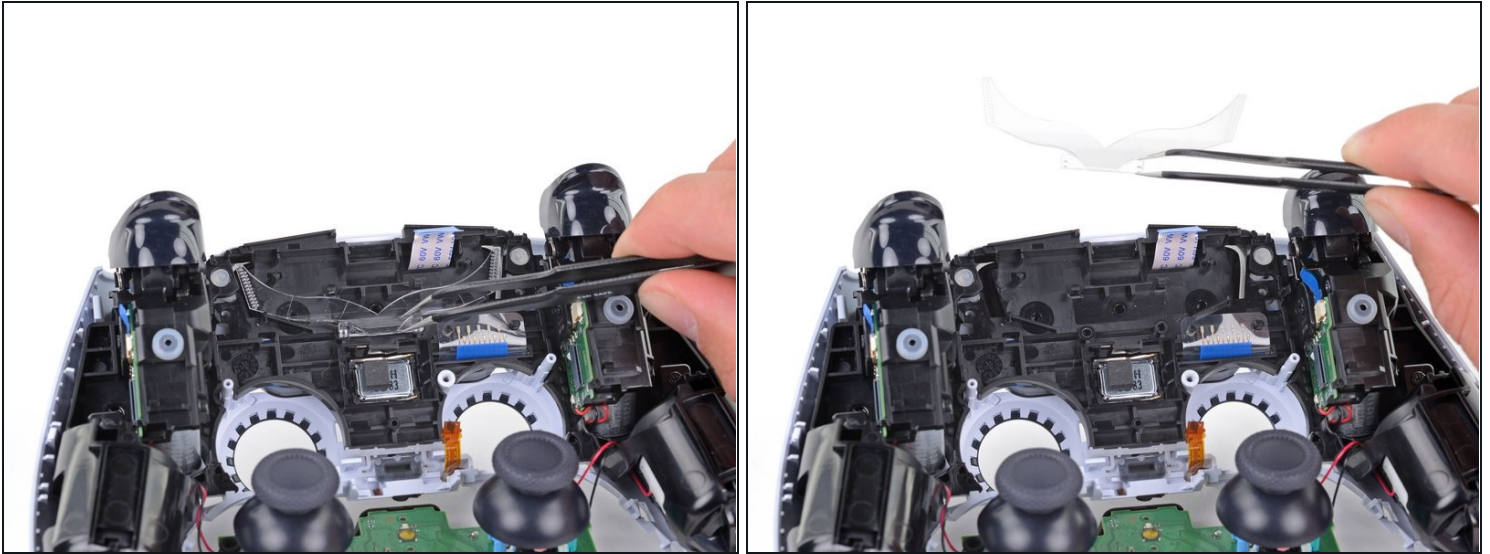
- Use a Phillips screwdriver to remove the two 8.5 mm screws securing the light guide.

Step 25



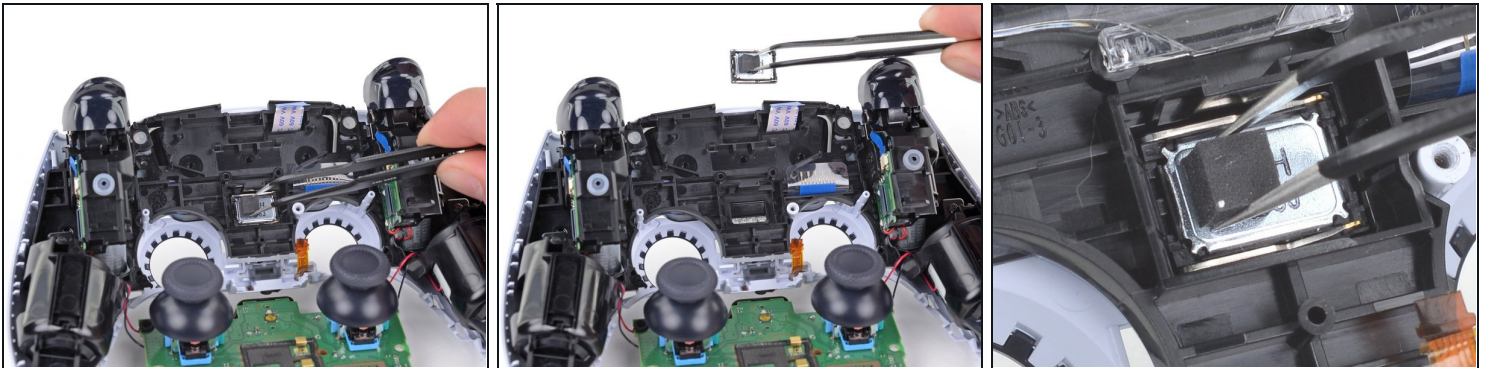
- Use a pair of [tweezers](#) or your fingers to remove the light guide bracket.

Step 26



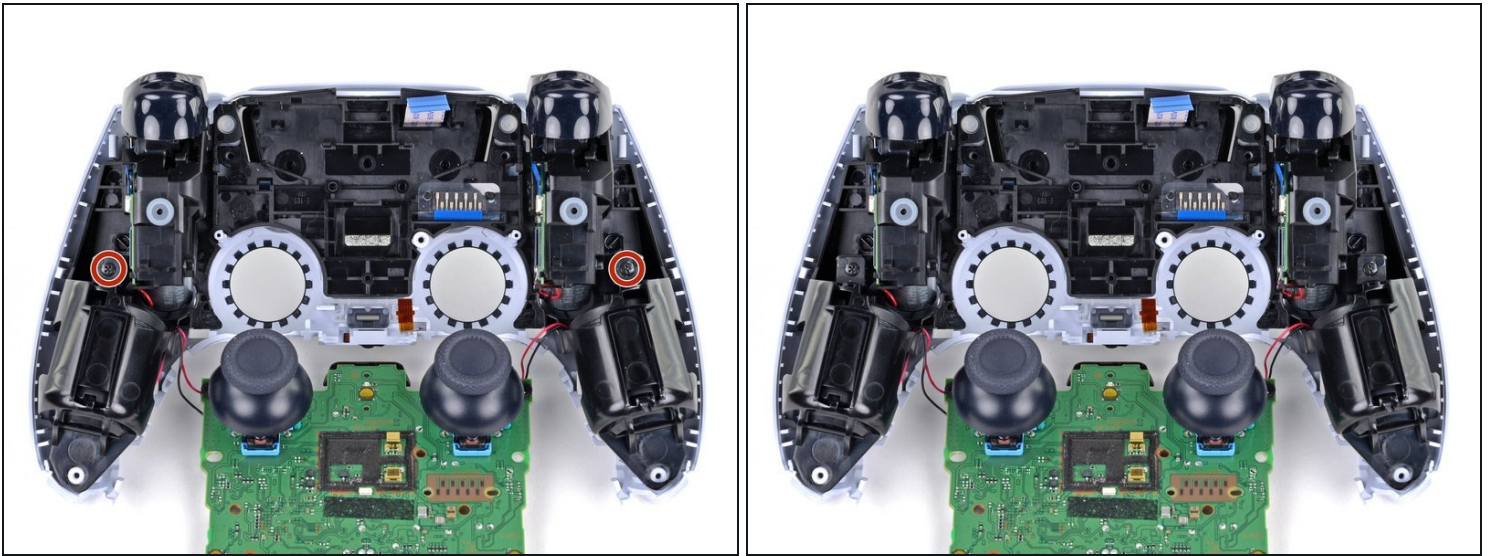
- Use a pair of tweezers or your fingers to remove the light guide.

Step 27 — Remove the speaker



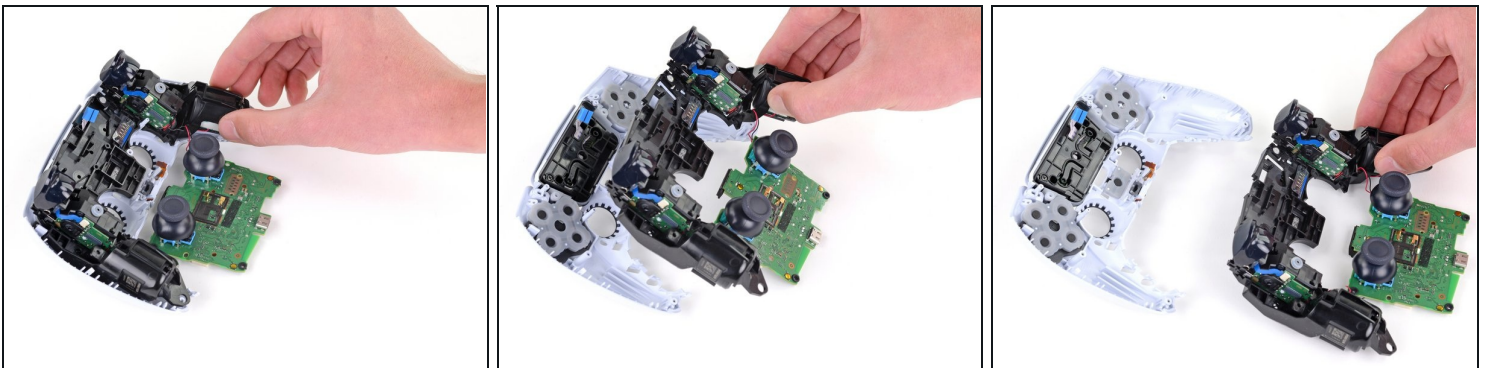
- Use a pair of [tweezers](#) to remove the speaker from the midframe.
- ☒ Be sure to reinstall the speaker in the correct orientation with the foam pad on the left side and the gold [contact points](#) on the right.

Step 28 — Remove the midframe



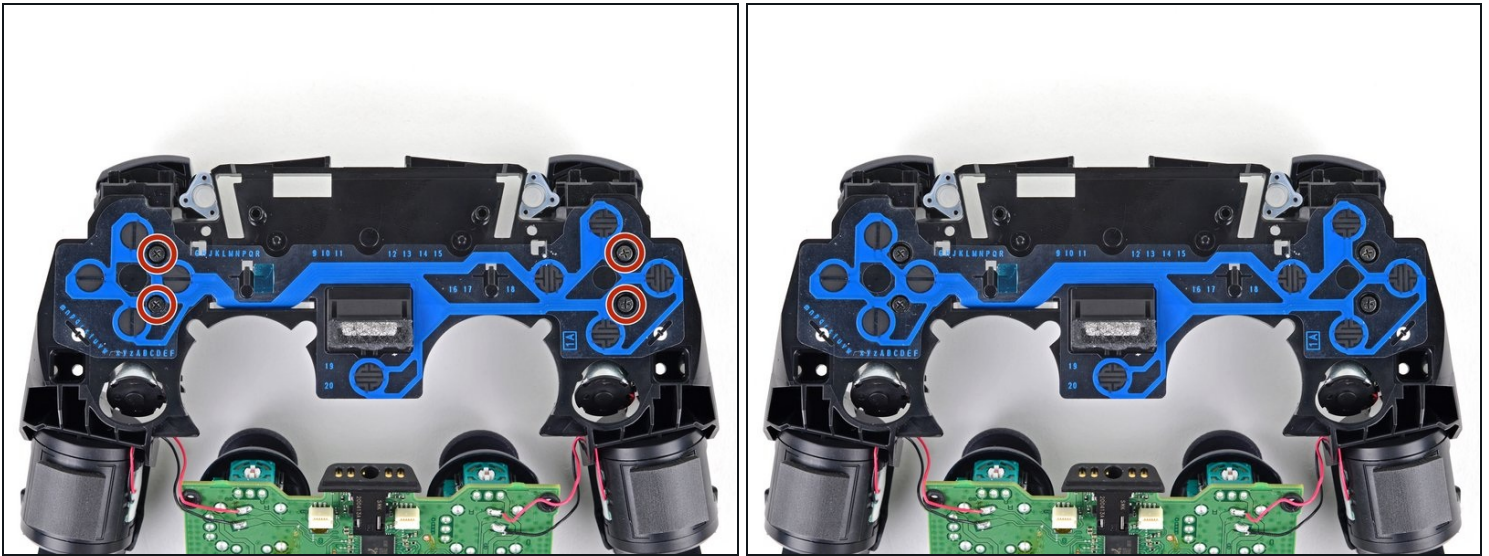
- Use a Phillips screwdriver to remove the two 6.4 mm screws securing the midframe to the front case.

Step 29



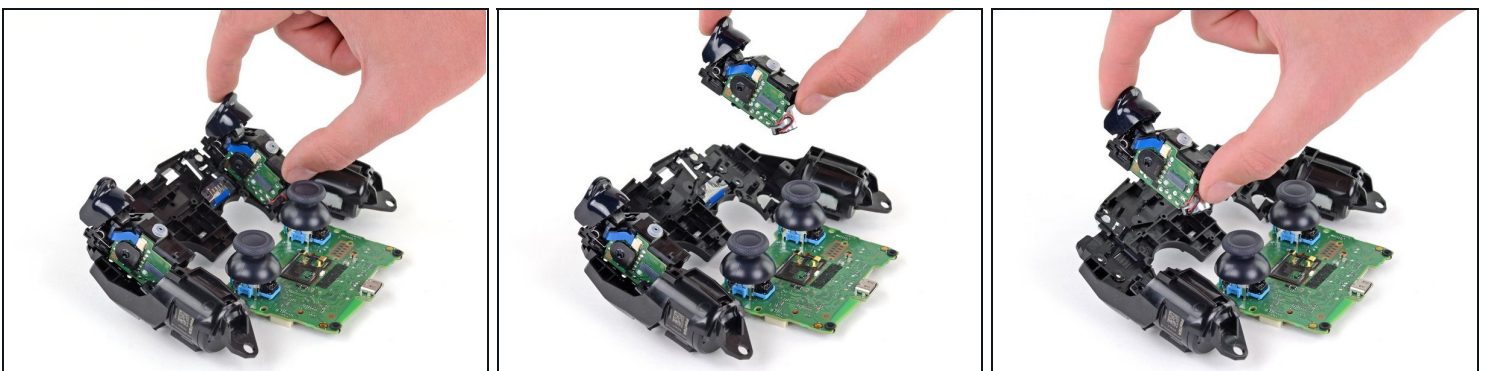
- Carefully lift the midframe and motherboard up and out of the front case.
⚠ Be careful not to strain the vibrator motor wires.
- ☑ During reassembly, feed the touchpad's ribbon cable back through its rectangular opening in the midframe.

Step 30 — Remove the trigger assemblies



- Flip over the midframe and motherboard.
- Use a Phillips screwdriver to remove the four 6.4 mm screws securing the trigger assemblies to the midframe.
- ⓘ If only one trigger assembly needs to be replaced, only remove the screws for that one.

Step 31



- Carefully flip the midframe and motherboard over.
 - ⓘ The trigger assemblies are loose and may fall out.
- Remove the trigger assemblies.

To reassemble your device, follow the above steps in reverse order.

Take your e-waste to an R2 or e-Stewards certified recycler.

Repair didn't go as planned? Try some [basic troubleshooting](#), or ask our Answers community for help.