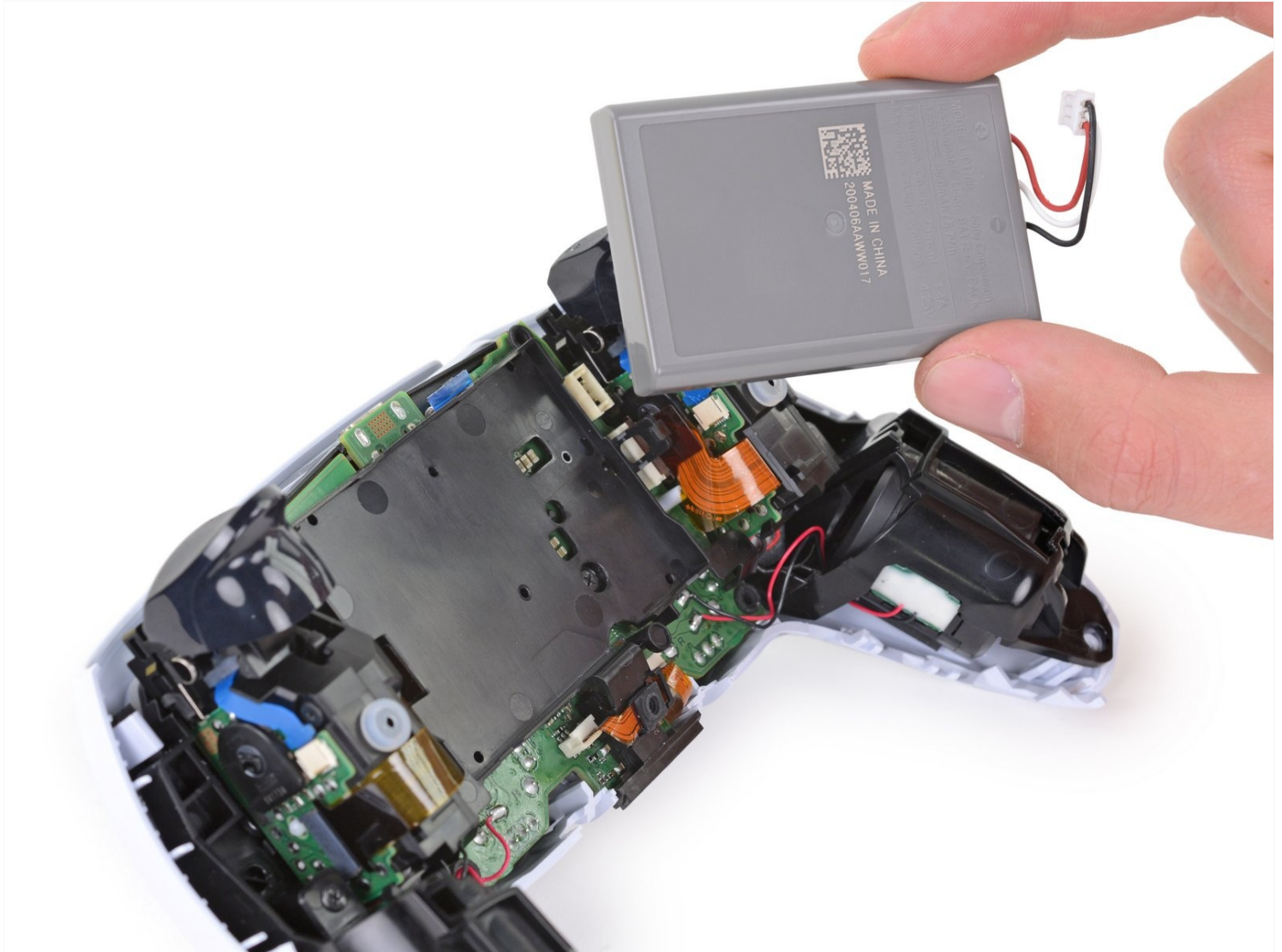




Sony DualSense Controller Battery Replacement

Follow this guide to replace the battery on a...

Written By: Sam Omiotek



INTRODUCTION

Follow this guide to replace the battery on a Sony PlayStation 5 DualSense controller.

Note: This guide is for DualSense controllers with an FCC ID ending in **1**. Check the back of your controller to verify your model. If yours ends in **A**, there will be differences in the internal design, but you can still use this guide.

If your battery is swollen, [take appropriate precautions](#).

For optimal performance, after completing this guide, [calibrate](#) your newly installed battery.



TOOLS:

1 x Opening Picks (1)
Spudger (1)
Phillips #00 Screwdriver (1)
Tweezers (1)



PARTS:

PlayStation DualSense Controller
Battery (1)

Step 1 — Unclip the right end of the middle trim



⚠️ Disconnect and power down your controller before you begin.

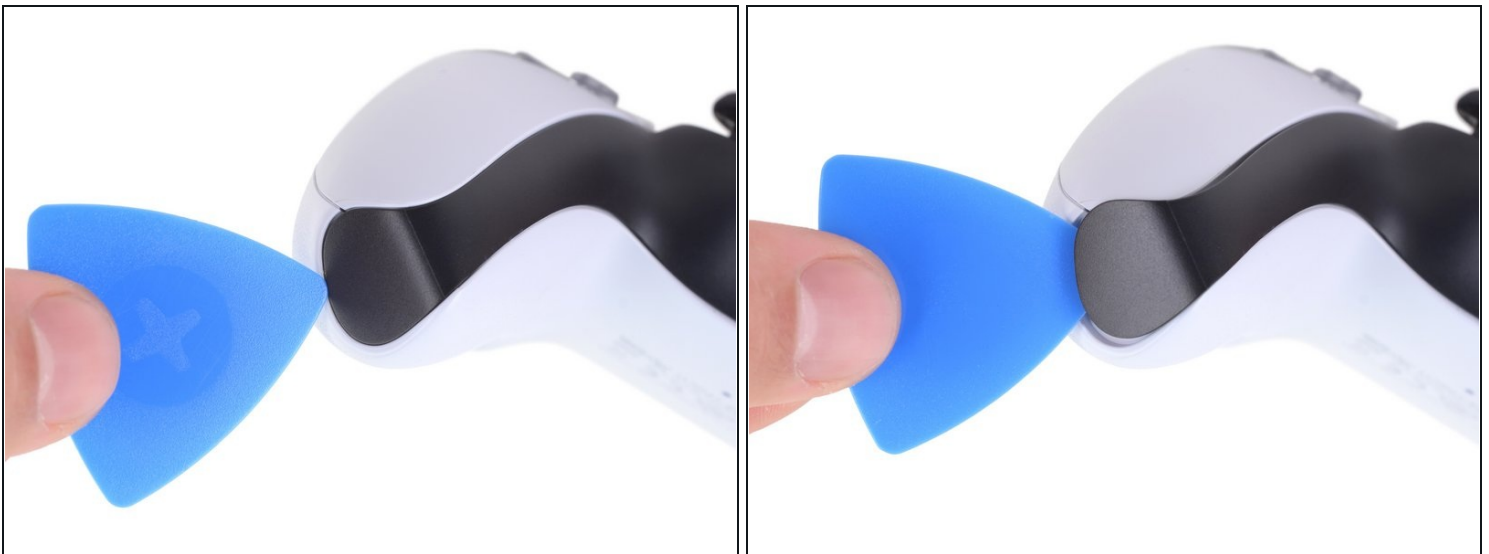
- Insert an opening pick underneath the middle trim at the bottom-right corner of the controller to release the clips securing it to the case.

Step 2 — Unclip the lower-right edge of the middle trim



- Slide the opening pick along the lower-right edge of the middle trim to release the clips securing it to the case.

Step 3 — Unclip the left end of the middle trim



- Insert an opening pick underneath the middle trim at the bottom-left corner of the controller to release the clips securing it to the case.

Step 4 — Unclip the lower-left edge of the middle trim



- Slide the opening pick along the lower-left edge of the middle trim to release the clips securing it to the case.

Step 5 — Remove the middle trim



- Use your fingers to lift up the bottom edge of the middle trim to release the remaining clips.
- Lift the middle trim over the joysticks to remove it.

Step 6 — Remove the L1 button



- Insert the flat end of a spudger into the gap above the **L1** button.
 - ① Cover the button with your [thumb](#) to prevent it from ejecting across the room.
- Pry upward to remove the **L1** button.

Step 7 — Remove the R1 button



- Insert the flat end of a spudger into the gap above the **R1** button.
 - ① Cover the button with your [thumb](#) to prevent it from ejecting across the room.
- Pry upward to remove the **R1** button.

Step 8 — Remove the rear case



- Use a Phillips screwdriver to remove the two 6.4 mm screws securing the bottom corners of the lower case.

Step 9



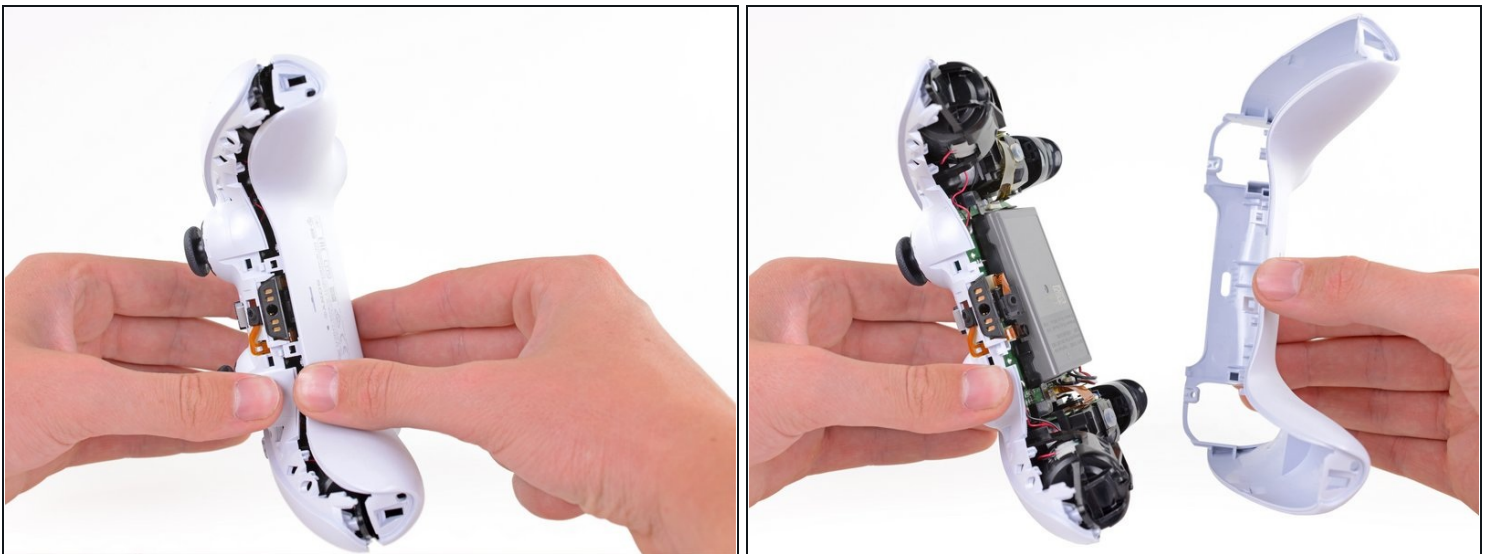
- Use a Phillips screwdriver to remove the two 6.4 mm screws behind the **L1** and **R1** buttons.

Step 10



- Use the pointed edge of a spudger to unclip the two clips on either side of the headset jack.

Step 11



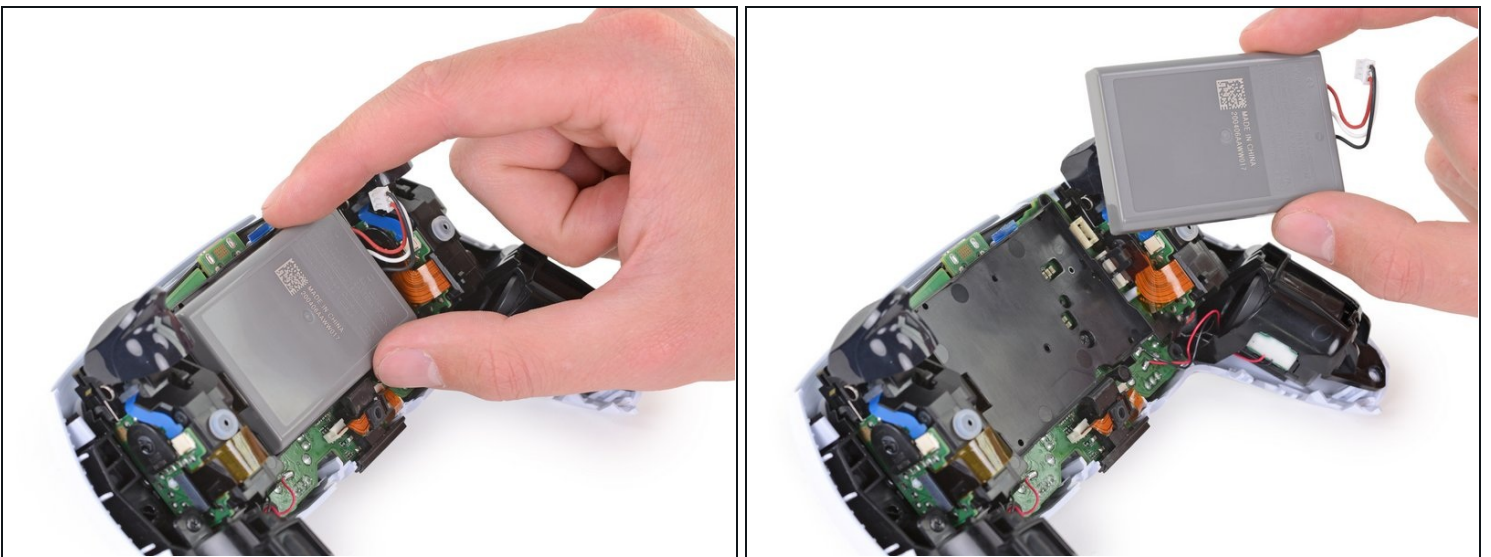
- Remove the rear case.
- ⓘ On some revisions, the rear case is held with two more clips next to the previously removed bumpers. If the rear case doesn't open without force, check for those clips.

Step 12 — Disconnect the battery



- Use a pair of tweezers or your fingers to disconnect the battery from the motherboard.
⚠ Grip the connector, not the wires, when disconnecting.

Step 13 — Remove the battery



- Lift the battery straight out of the battery bracket.

To reassemble your device, follow the above steps in reverse order.

Take your e-waste to an [R2 or e-Stewards certified recycler](#).

Repair didn't go as planned? Try some [basic troubleshooting](#), or ask our [Answers community](#) for help.