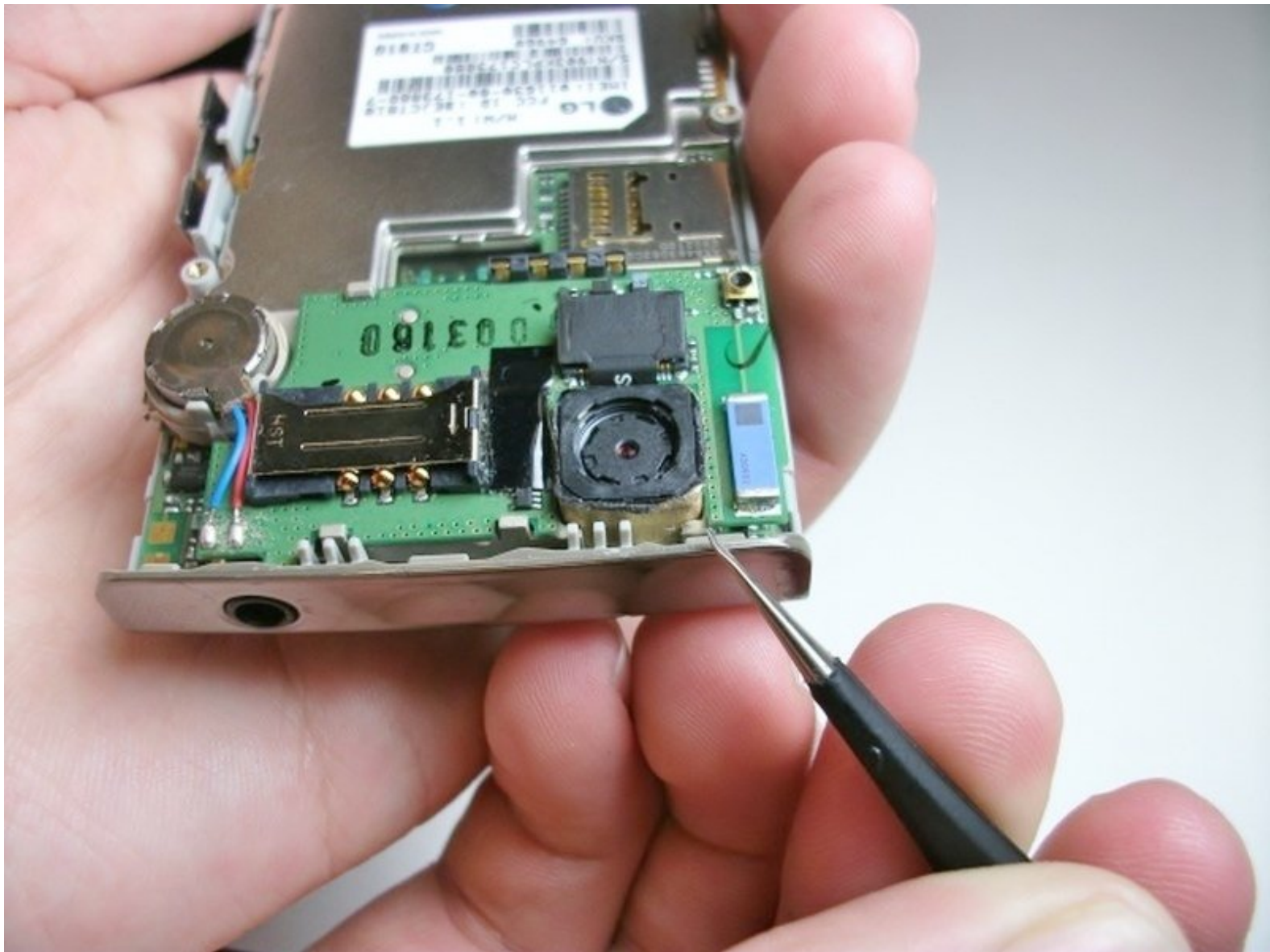




LG Incite Camera Replacement

If your phone's camera breaks or you would like...

Written By: Kimberly Kha



INTRODUCTION

If your phone's camera breaks or you would like to update it, this guide will show you how to install your phone's camera.



TOOLS:

- [iFixit Opening Tool](#) (1)
- [Phillips #00 Screwdriver](#) (1)
- [Tweezers](#) (1)



PARTS:

- [LG Incite CT810 battery](#) (1)

Step 1 — Battery



- Hold the phone camera-side up and locate the rear cover.

Step 2



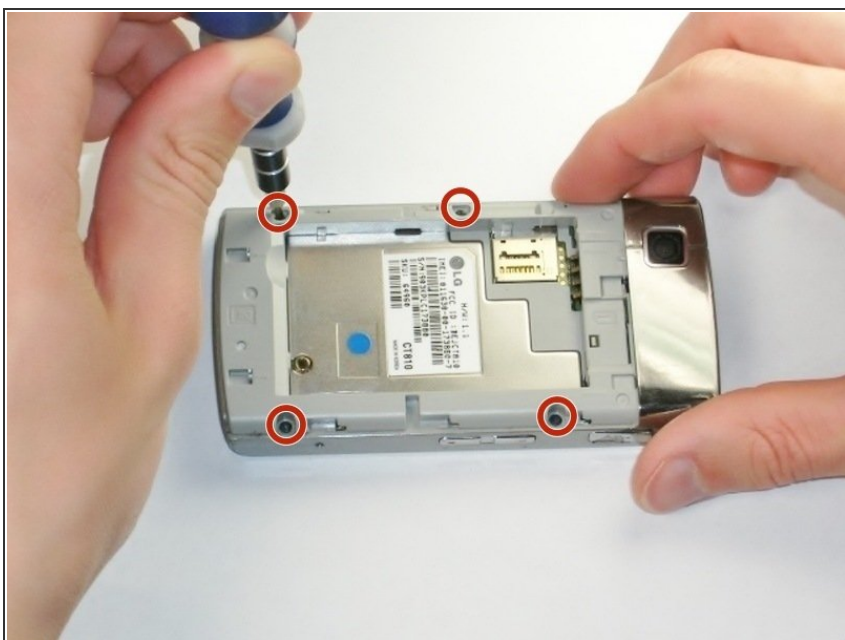
- Place a thumb below the camera, apply a little pressure, and slide the cover toward the bottom of the phone.

Step 3



- Place the plastic opening tool in the small slot below and to the left of the battery.
- Pry the battery upward to remove it.

Step 4 — Back Panel



- Using the #00 Philips screw driver, unscrew the four 4.5mm screws located around the battery compartment.

Step 5



- Wedge the plastic opening tool between the screen and the body of the device, using care to avoid damaging internal components.
- Gently move the tool around the perimeter of the screen to separate it from the body.
- ⓘ You should not completely separate the screen from the device in this step.

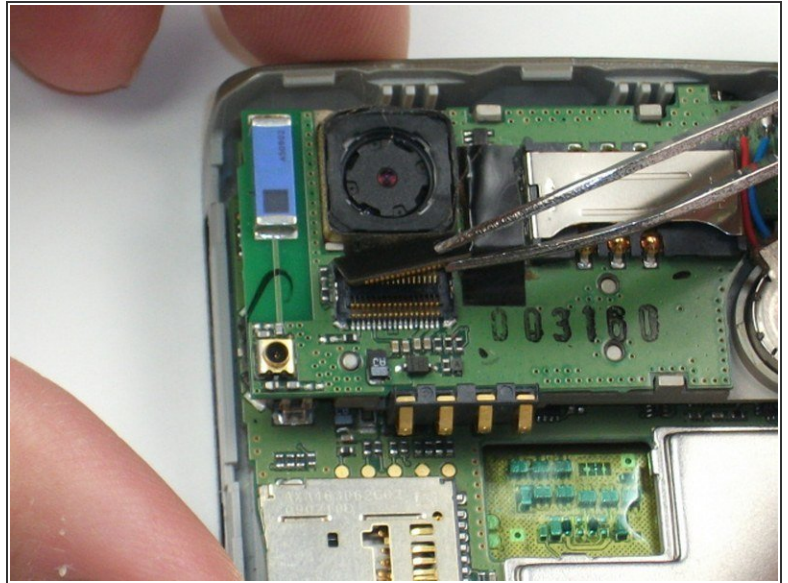
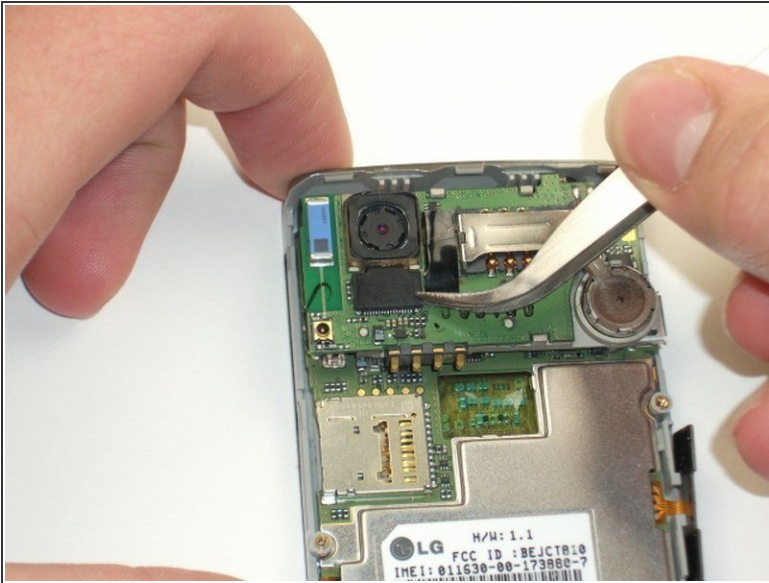
Step 6



- Flip the device over so the battery compartment faces up.
- Press the scroll wheel, located in the upper-left corner, into the device to avoid damage.
- Gently insert the plastic opening tool into the seam between the frame and front cover to separate the back panel from the device.

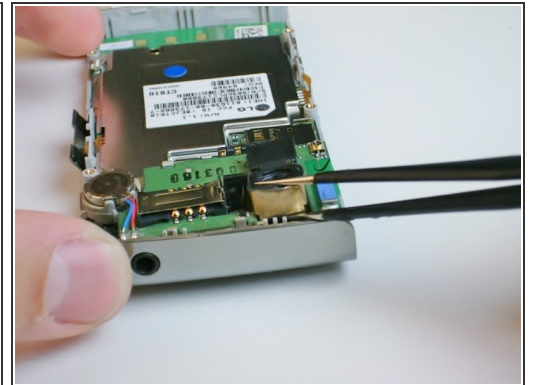
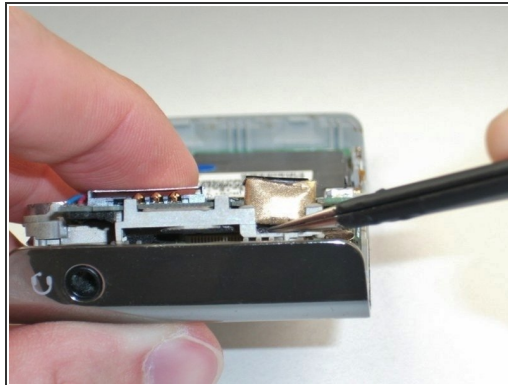
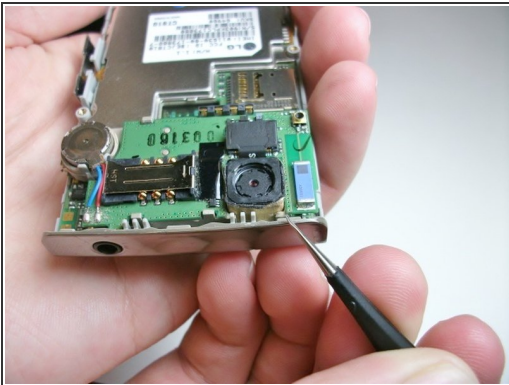
⚠ The volume, lock, and camera buttons are loose, so be careful not to misplace them.

Step 7 — Camera



- Locate the camera near the upper-left corner and use the metal tweezers to carefully detach the black tab.

Step 8



- Carefully slide the metal tweezers underneath the camera in order to lift it out.

⚠ Do not puncture the gold lining surrounding the camera.

- i** The camera is glued in place, so there may be a slight resistance.

To reassemble your device, follow these instructions in reverse order.