



iHome iH8BR Lower Case Replacement

The lower case gives the iHome its flat lower...

Written By: cfredric



INTRODUCTION

The lower case gives the iHome its flat lower surface and houses two AA batteries. This guide provides the first step in accessing the areas of the iHome where components that could need installation are located.

TOOLS:

Spudger (1)

Phillips #2 Screwdriver (1)

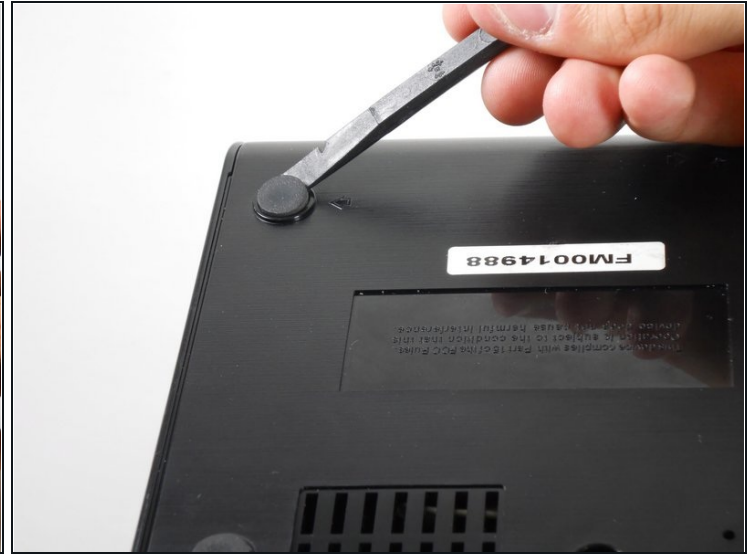
Tweezers (1)

Step 1 — Lower Case



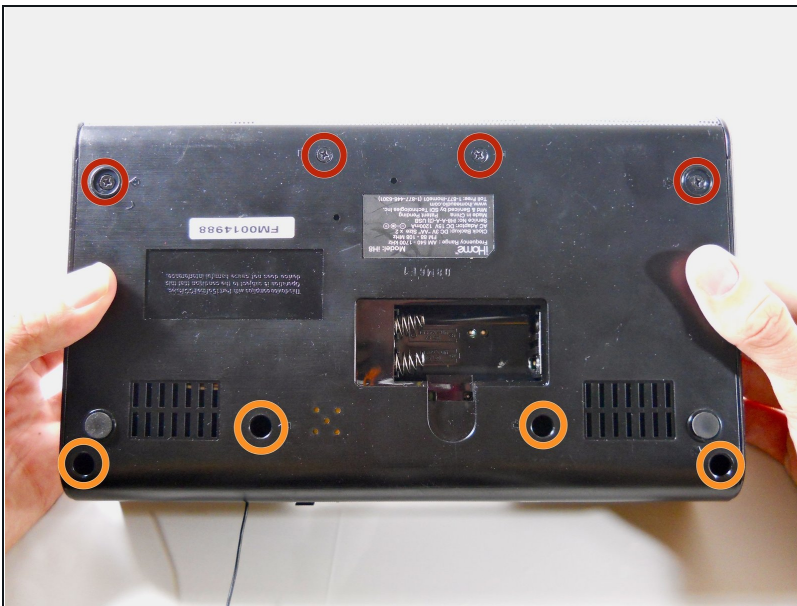
- Unplug the device from the wall outlet, and turn it over so that the buttons are on a flat surface.
- Use your fingers to pinch the tab in the direction of the "Open" arrow until tab is loose. Pull the tab vertically to remove it.
- Remove the battery cover and the batteries.

Step 2



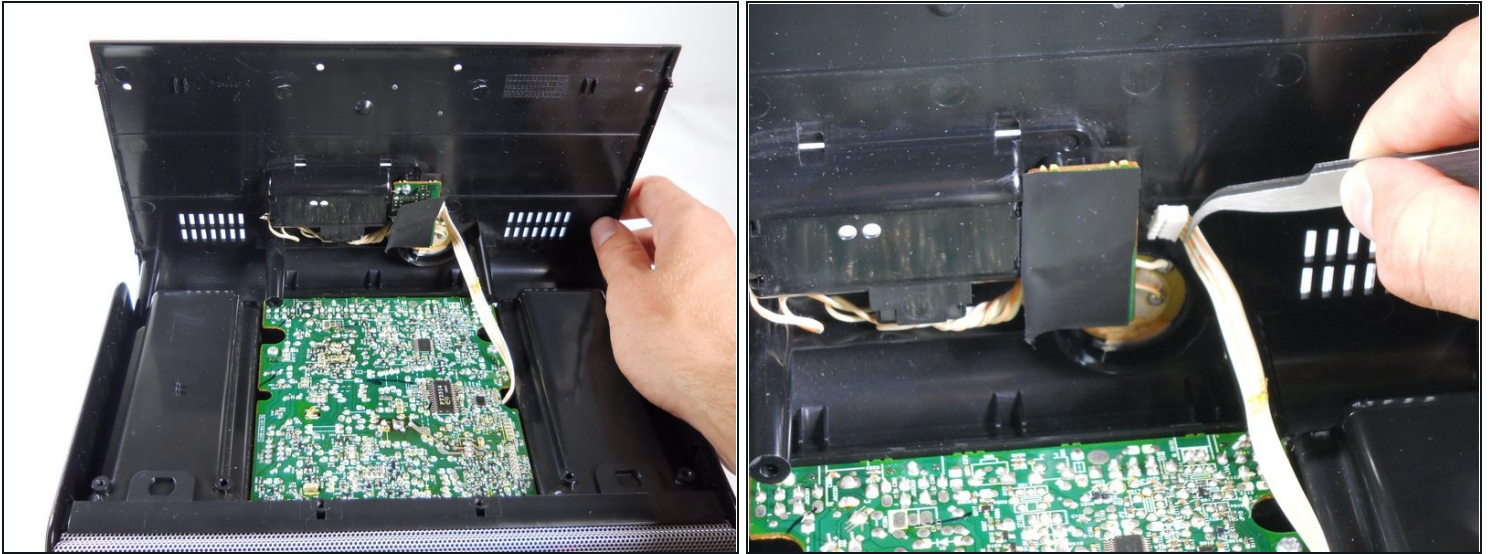
- Slide a spudger under the two front rubber pads to expose two hidden screws.

Step 3



- Remove the following eight screws:
 - Four 15.1 mm Phillips #2 screws near the front of the device.
 - Four 12.7 mm Phillips #2 screws near the back of the device.
- ① The slots for the four 12.7 mm screws are very narrow, so you will need a slender, Phillips #2 screwdriver that does not feature replaceable heads in order to reach them.

Step 4



- Turn the iHome 180 degrees so the speaker grille is facing you. Carefully lift the bottom case away from the rest of the body and tilt it as shown.

⚠ Be careful and do not yank the bottom case. A white ribbon wire is the only thing that connects the bottom case to the rest of the device.

- Using a pair of [tweezers](#), detach the white ribbon cable. Make sure to pull on the ribbon, not on the head.
- The lower case can now be completely removed from the device!

To reassemble your device, follow these instructions in reverse order.