



Dismantle Nespresso CitiZ

For many repairs the CitiZ must be opened, this...

Written By: VauWeh



INTRODUCTION

For many repairs the CitiZ must be opened, this is shown here.



TOOLS:

- [Oval Drive Bit](#) (1)
 - [Metal Spudger](#) (1)
 - [iFixit Opening Tool](#) (1)
-

Step 1 — Dismantle Nespresso CitiZ



⚠ Never forget: pull the plug!

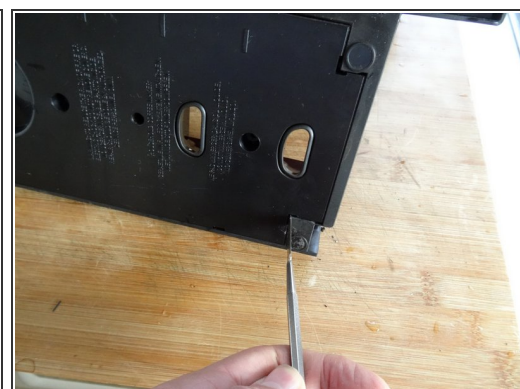
- Remove all attachments: Water tank, capsule and cup drawer, drip tray.
- ① The model shown is also equipped with a milk frother, remove that too.

Step 2



- The bottom is secured by oval head screws.
 - ⓘ These screws have an oval head that makes them look like rivets (picture 2). You need to use a special bit - [also available at iFixit](#) - for their removal. [Here a DIY guide](#). If the right bit is not available, it could be done with a pair of needle nose pliers. Nespresso wants to keep us out of our own machines!!!
- Remove five oval head screws securing the large bottom panel.
 - ⓘ Note: this panel is smaller on models without milk frother.

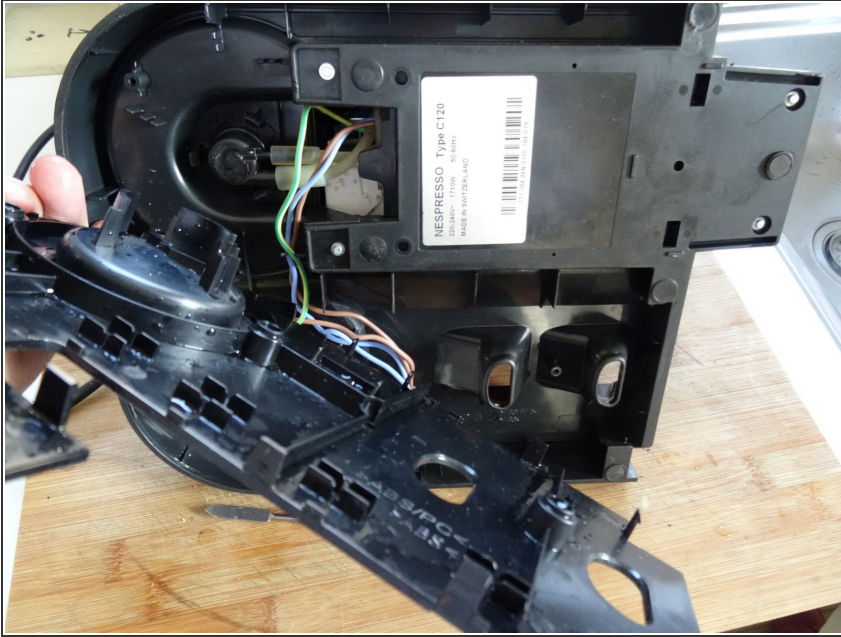
Step 3



- The bottom panel is just snapped into place. Insert a metal spudger into the slots and lift the panel out. It sits quite tightly and you might use some force to get it out.

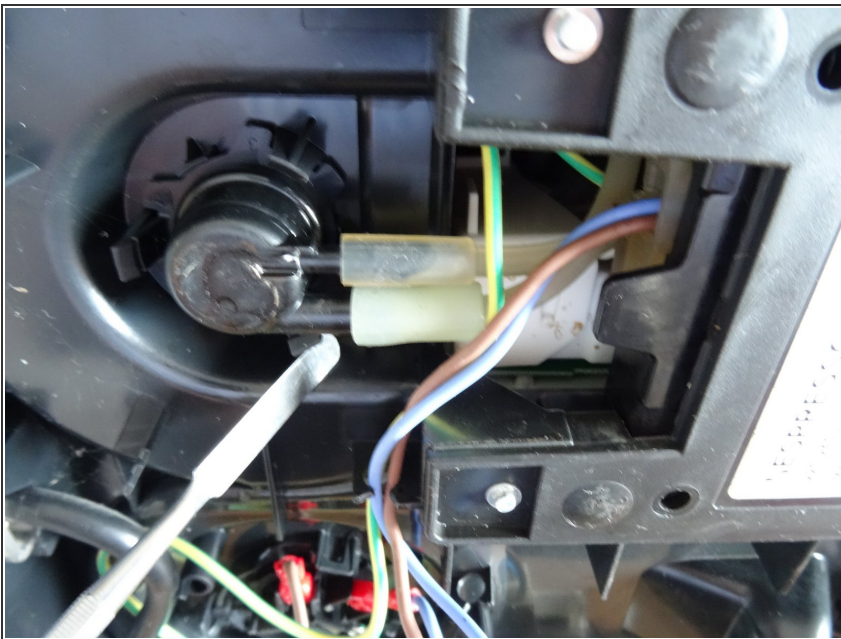
This document was generated on 2023-01-19 05:39:59 PM (MST).

Step 4



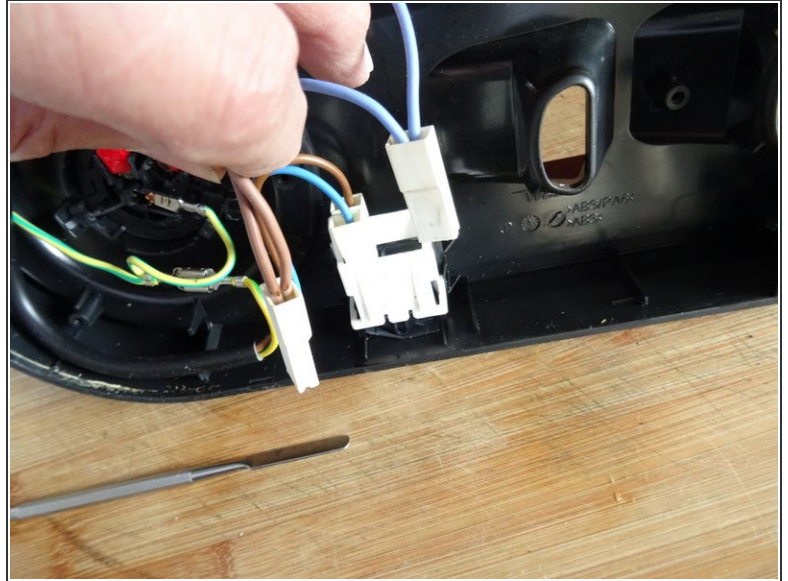
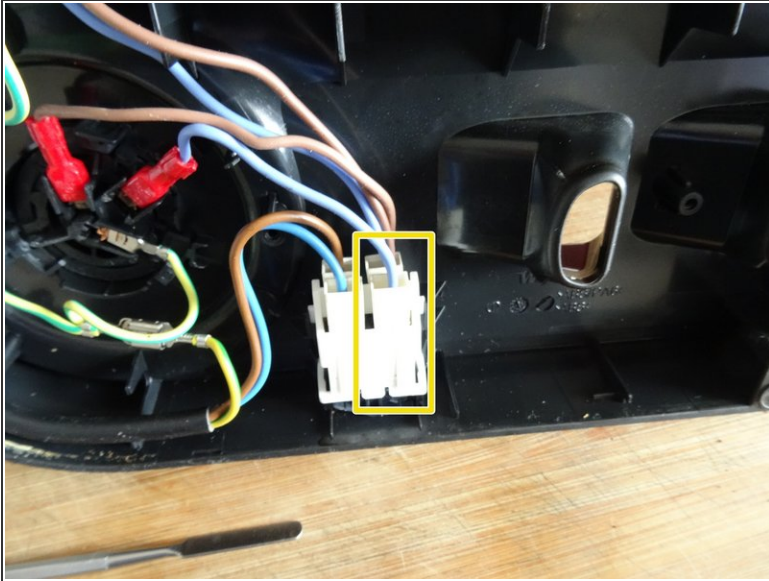
- Remove the large bottom panel.

Step 5



- Use a spudger to slide off the two silicon tubes.

Step 6



- Disconnect the two spade plugs on the blue and brown wires from the power switch. The two left ones remain.

Step 7



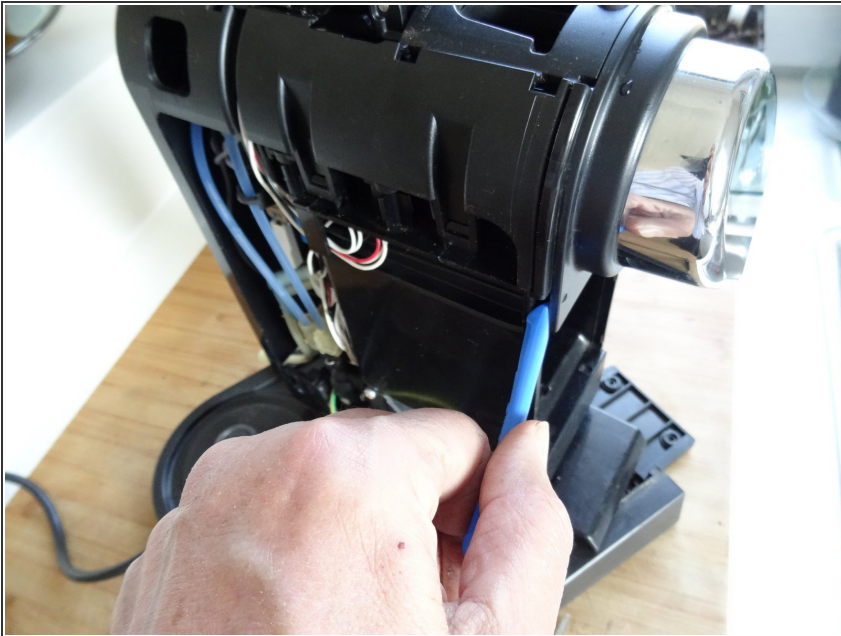
- Remove four oval head screws from the small bottom panel.
- Remove the main device from the base. It's still connected with some wires, but this doesn't bother much.

Step 8



- The two colored side panels are only snapped into place. However, the latches sit very tight. You really need a lot of force. First lift the lower edge using a plastic opening tool.
 - ⓘ Depending from the model it might help, when you first pry off the coffee spout. (See next step)
- Unfold each of the side panels upwards and remove them.

Step 9



- Insert a opening tool in the gap on the bottom of the coffee spout. Pry it off carefully.

To reassemble your device, follow these instructions in reverse order.