



Nespresso CitiZ Brewing Unit replace

If water drips out of the coffee maker, the...

Written By: VauWeh



INTRODUCTION

If water drips out of the coffee maker, the brewing unit may be defective. The interaction of the capsule, brewing unit and "pyramid plate" is very sensitive, small changes in tolerance cause leaks at the capsule. The brewing unit may have an crack, or the "pyramid plate" that punctures the capsule may be heavily full with debris. Replacing the brewing unit often is the solution.



TOOLS:

- [iFixit Opening Tool](#) (1)
- [Oval Drive Bit](#) (1)
- [Metal Spudger](#) (1)
- [TR10 Torx Security Screwdriver](#) (1)



PARTS:

- [New Item](#) (1)

<https://www.ersatzteileshop.de/ms-0059267-nespresso-krups-citiz-brueheinheit-ms0059267-kaffeemaschine>

- [New Item](#) (1)

Step 1 — Dismantle Nespresso CitiZ



⚠ Never forget: pull the plug!

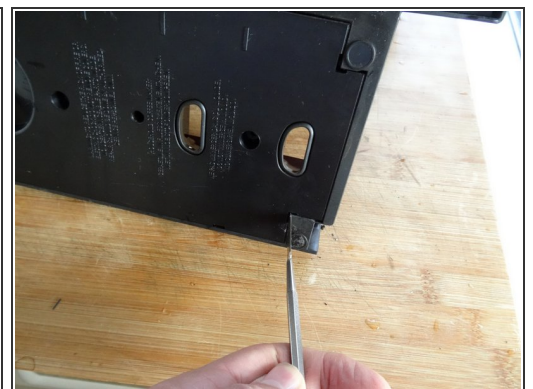
- Remove all attachments: Water tank, capsule and cup drawer, drip tray.
- ① The model shown is also equipped with a milk frother, remove that too.

Step 2



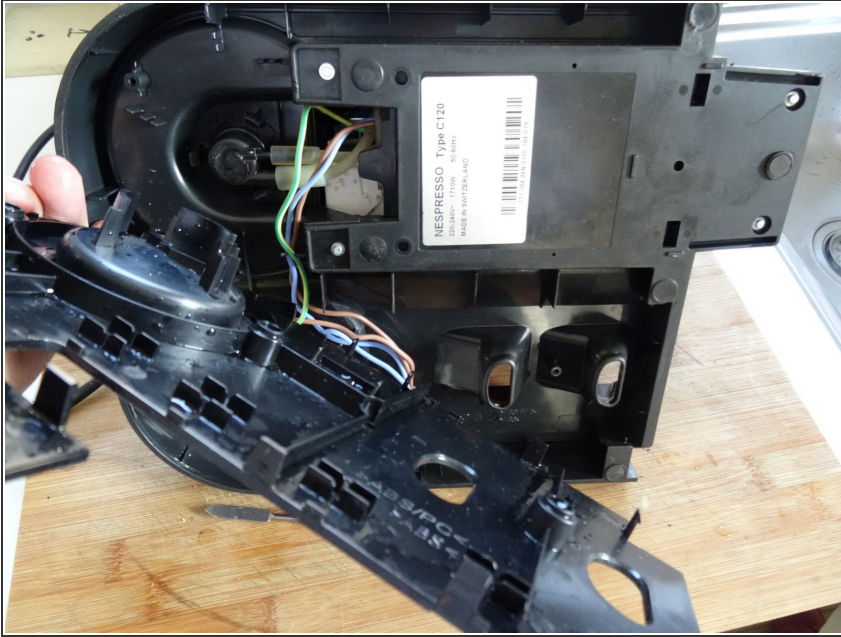
- The bottom is secured by oval head screws.
 - ⓘ These screws have an oval head that makes them look like rivets (picture 2). You need to use a special bit - [also available at iFixit](#) - for their removal. [Here a DIY guide](#). If the right bit is not available, it could be done with a pair of needle nose pliers. Nespresso wants to keep us out of our own machines!!!
- Remove five oval head screws securing the large bottom panel.
 - ⓘ Note: this panel is smaller on models without milk frother.

Step 3



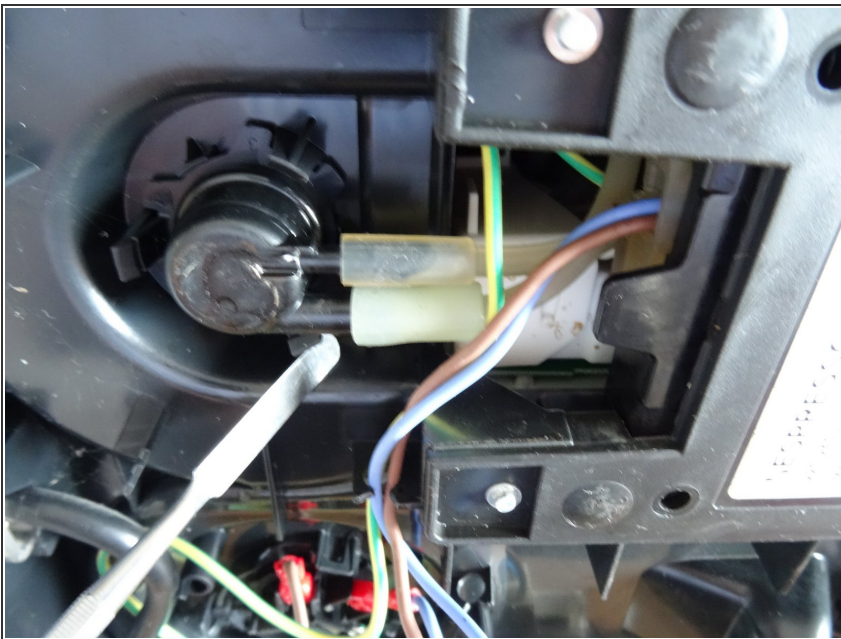
- The bottom panel is just snapped into place. Insert a metal spudger into the slots and lift the panel out. It sits quite tightly and you might use some force to get it out.

Step 4



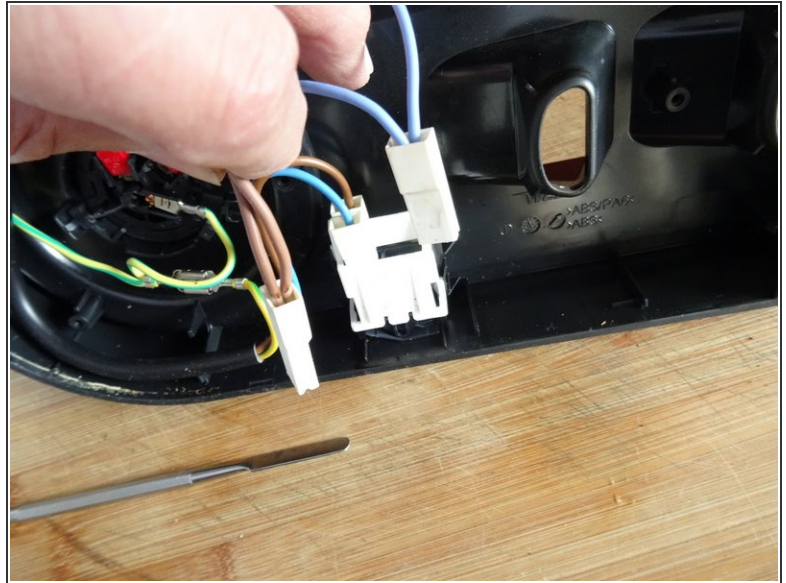
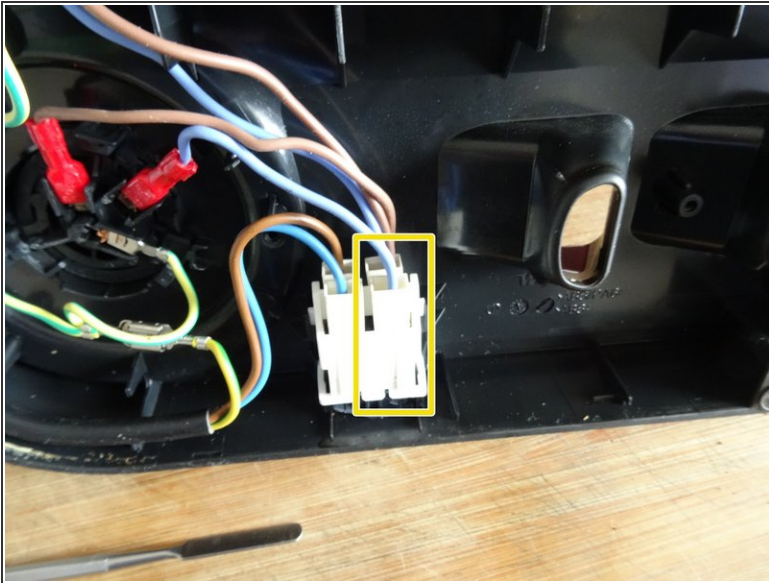
- Remove the large bottom panel.

Step 5



- Use a spudger to slide off the two silicon tubes.

Step 6



- Disconnect the two spade plugs on the blue and brown wires from the power switch. The two left ones remain.

Step 7



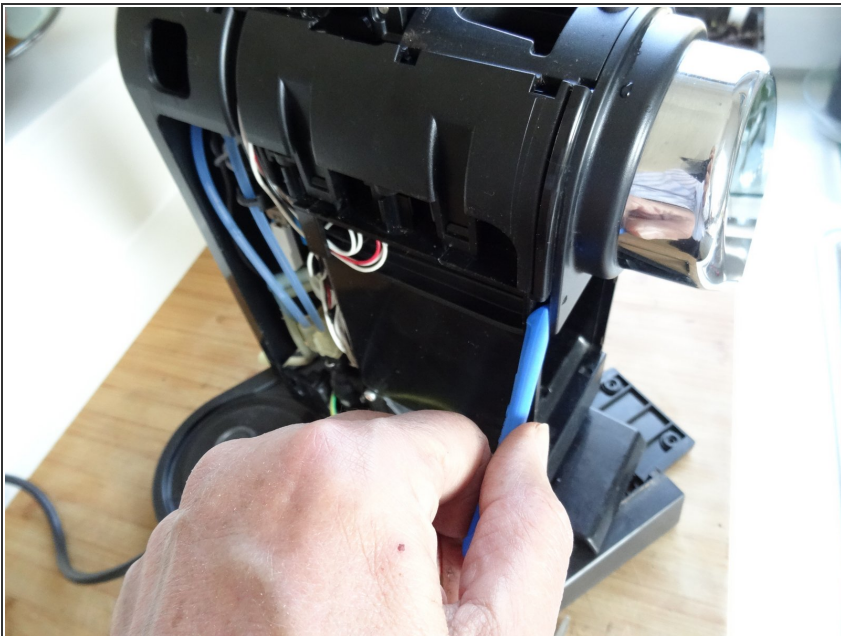
- Remove four oval head screws from the small bottom panel.
- Remove the main device from the base. It's still connected with some wires, but this doesn't bother much.

Step 8



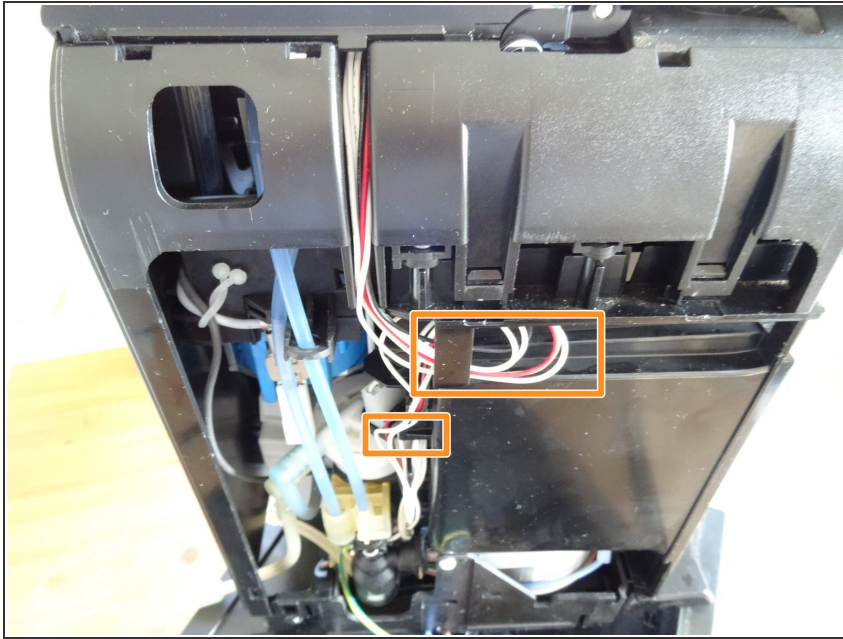
- The two colored side panels are only snapped into place. However, the latches sit very tight. You really need a lot of force. First lift the lower edge using a plastic opening tool.
 - ⓘ Depending from the model it might help, when you first pry off the coffee spout. (See next step)
- Unfold each of the side panels upwards and remove them.

Step 9



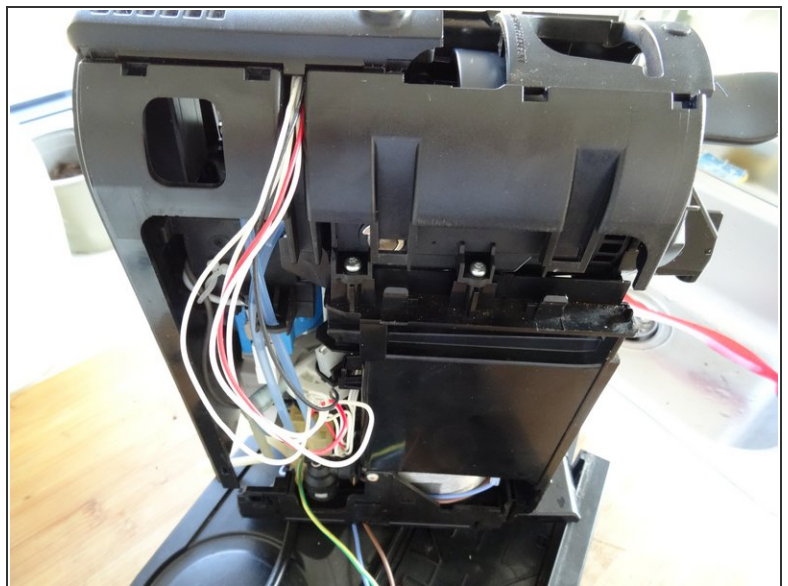
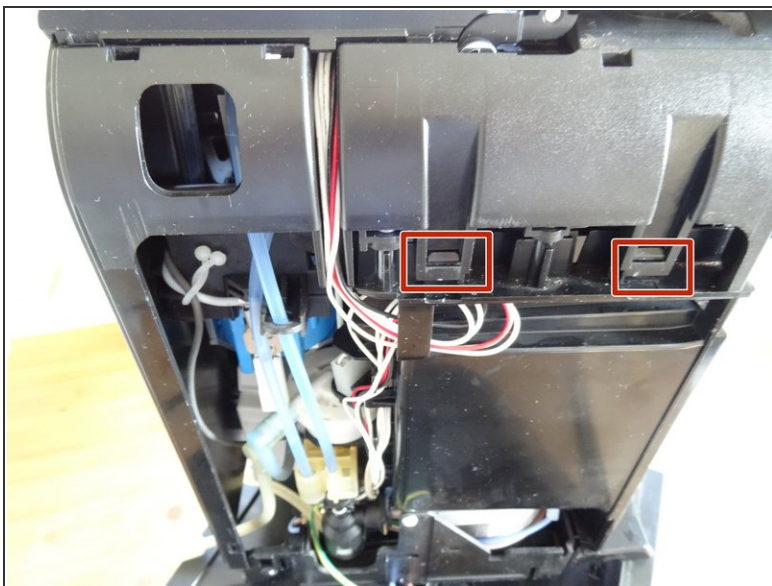
- Insert a opening tool in the gap on the bottom of the coffee spout. Pry it off carefully.

Step 10 — Brewing unit



- Get the wires out of their holder.

Step 11



- The plastic cover over the brewing unit is secured by two clips on each side. Use a metal spudger to pry them off.
- Lift the cover slightly, but don't remove it, it is still connected by some cables.

Step 12



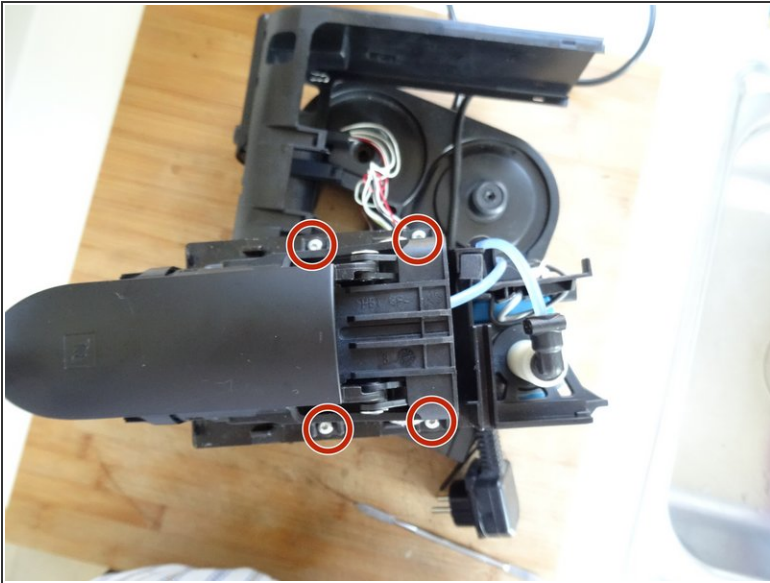
- Open the lever and lift the cover out over the lever. Make sure that the cables are not strained too much.
- Put the cover aside, but leave the cables connected.

Step 13



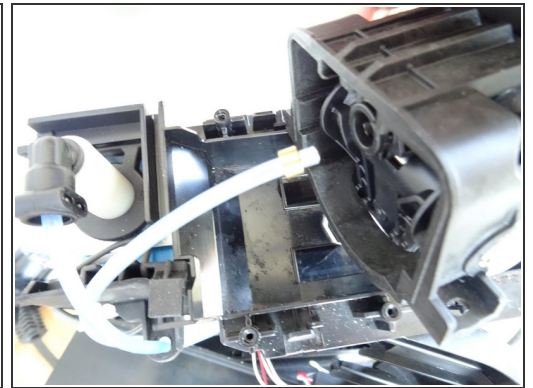
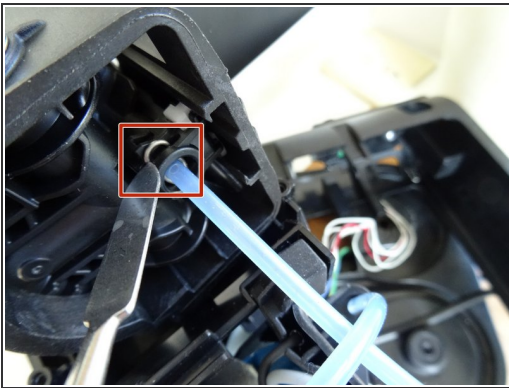
- Use a metal spudger and insert it into the seam between the inner coffee spout and the brewing unit. Pry off the coffee spout.
- Remove the inner coffee spout.

Step 14



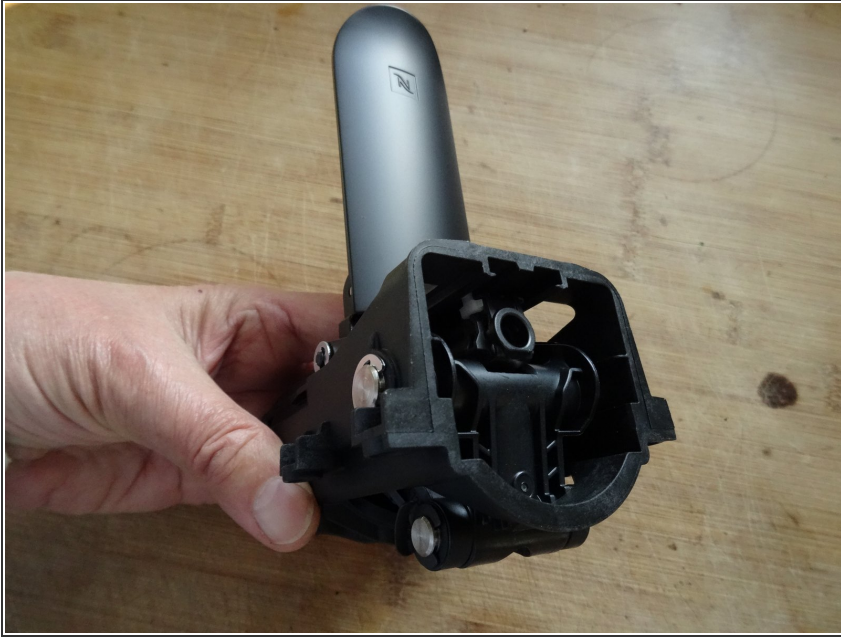
- Use a Torx T10 screwdriver to remove the four screws securing the brewing unit.

Step 15



- The brewing unit now remains only attached to the hot water hose. Use the metal spudger to pull out the metal clip at the end of the hose.
- Pull out the end of the hot water hose.

Step 16



- Lift the brewing unit from the device.

To reassemble your device, follow these instructions in reverse order.