



Samsung Galaxy Note20 SIM Card Replacement

How to remove or replace the SIM card on a Samsung Galaxy Note20.

Written By: Kyle Smith



INTRODUCTION

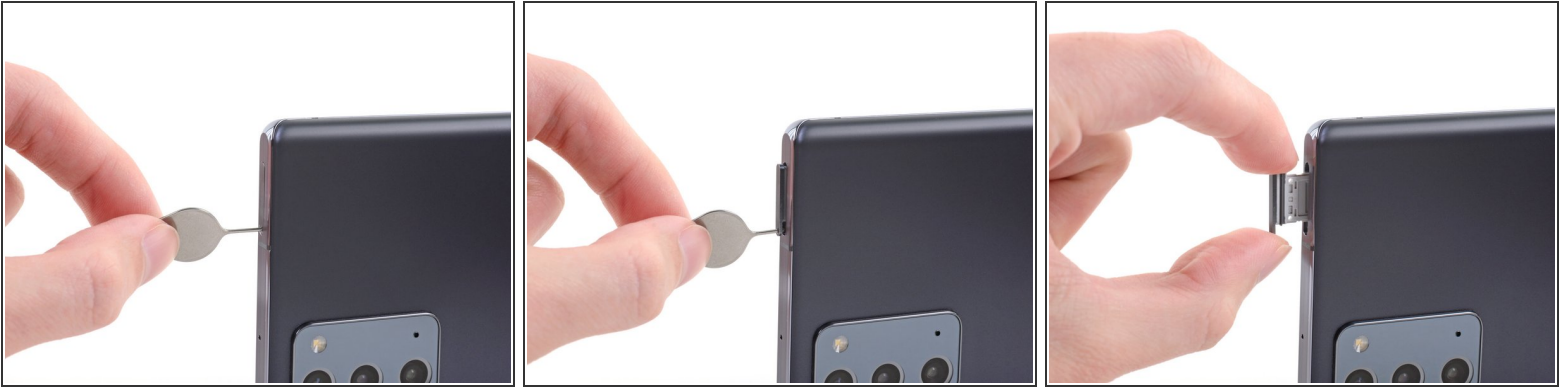
Use this guide to remove the SIM card tray and SIM card on your Samsung Galaxy Note20.



TOOLS:

- [SIM Card Eject Tool](#) (1)
-

Step 1 — Remove the SIM card tray



- Insert a SIM eject tool, bit, or straightened paper clip into the SIM card tray hole on the top edge of the phone.
 - Press the SIM eject tool into the SIM card tray hole to eject the SIM card tray.
 - Remove the SIM card tray.
- i** If you accidentally inserted the SIM eject tool into a microphone hole, don't worry! [You most likely didn't damage the microphone.](#)

Compare your new replacement part to the original part—you may need to transfer remaining components or remove adhesive backings from the new part before installing.

To reassemble your device, follow these instructions in reverse order.

Take your e-waste to an [R2 or e-Stewards certified recycler](#).

Repair didn't go as planned? Try some [basic troubleshooting](#), or ask our [Samsung Galaxy Note20 Answers community](#) for help.