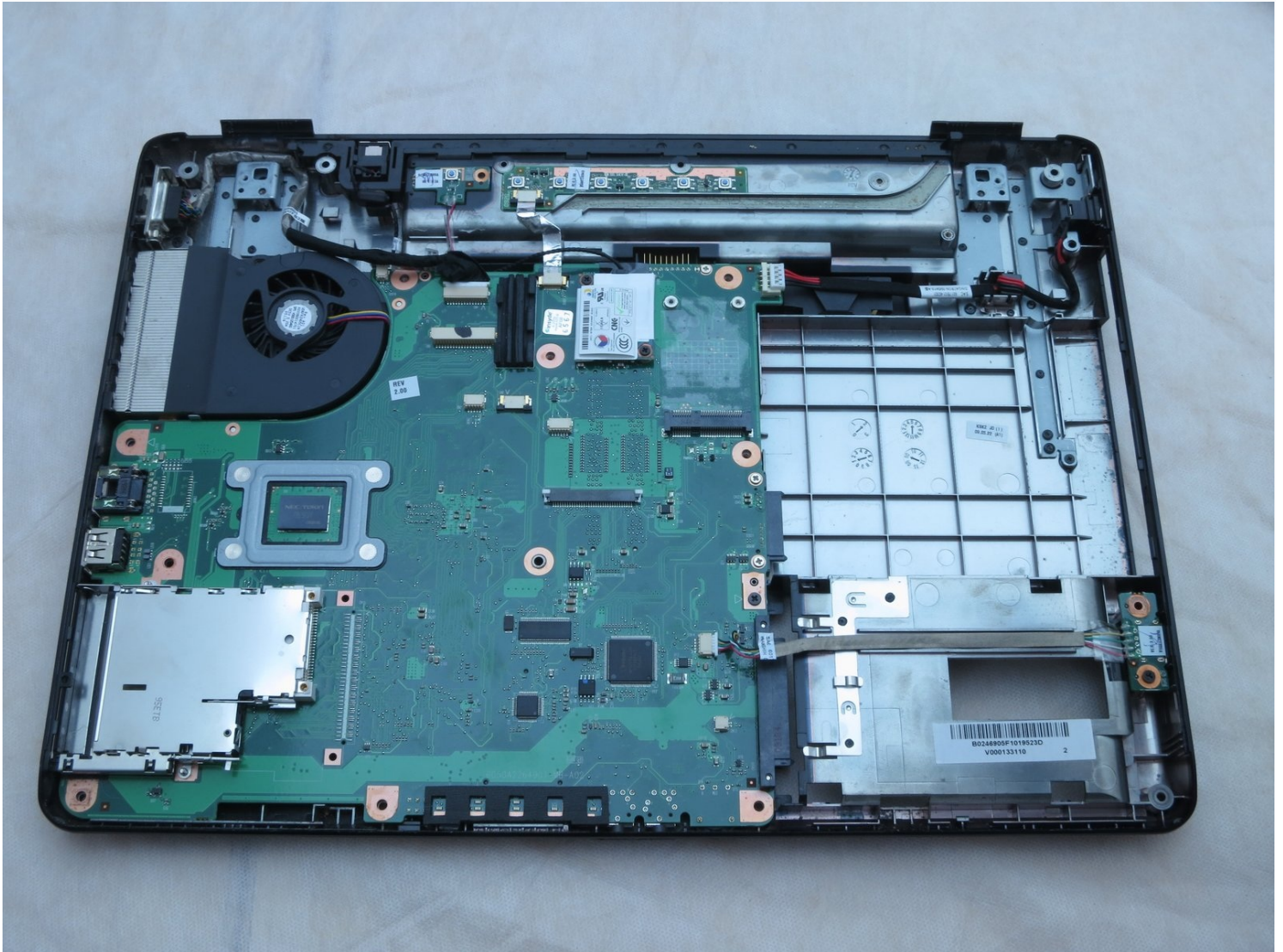




Toshiba Satellite L305-S5946 Power Jack Replacement

Use this guide to replace a faulty power jack...

Written By: Michael Erberich



INTRODUCTION

Use this guide to replace a faulty power jack in your Toshiba Satellite L305-S5946, which is usually indicated by the computer failing to charge. You must remove the base housing in order to reach the power jack.

TOOLS:

[iFixit Opening Tool](#) (1)

[Phillips #00 Screwdriver](#) (1)

[Phillips #1 Screwdriver](#) (1)

Step 1 — Battery



- Place the laptop upside-down with the display hinges facing away from you.

Step 2



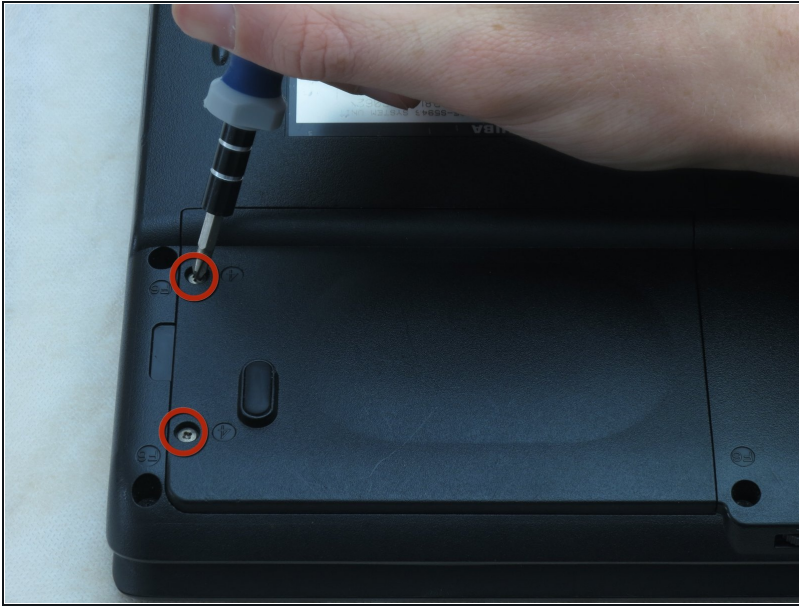
- Slide the latch for the left battery bay to the left.

Step 3



- Slide the latch for the right battery bay to the right and hold.
- Continue to hold the latch while using a plastic opening tool to lift and remove the battery bay cover.
- Remove the battery.

Step 4 — Hard Drive



- Loosen the two captive screws on the bottom left corner of the hard drive using a Phillips #1 screwdriver until you hear a click.

Step 5



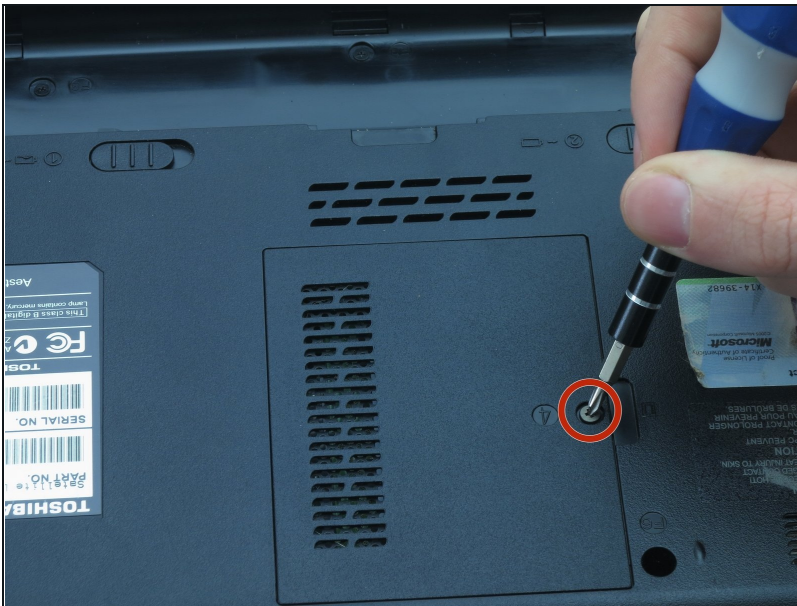
- Lift the hard drive cover using a non-marring iFixit opening tool.
 - ⓘ This will expose the hard drive.

Step 6



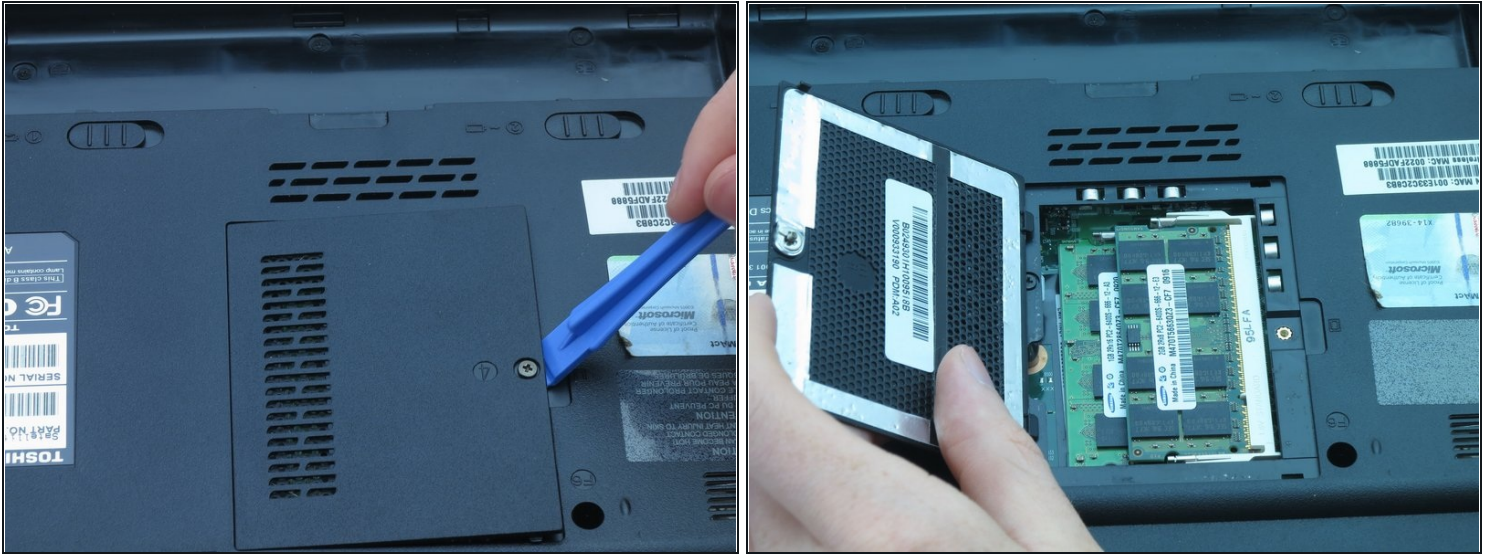
- Slide the hard drive to the left using your fingers.
- Remove the hard drive by inserting an iFixit opening tool under the right side of the hard drive and carefully lifting it out.

Step 7 — RAM



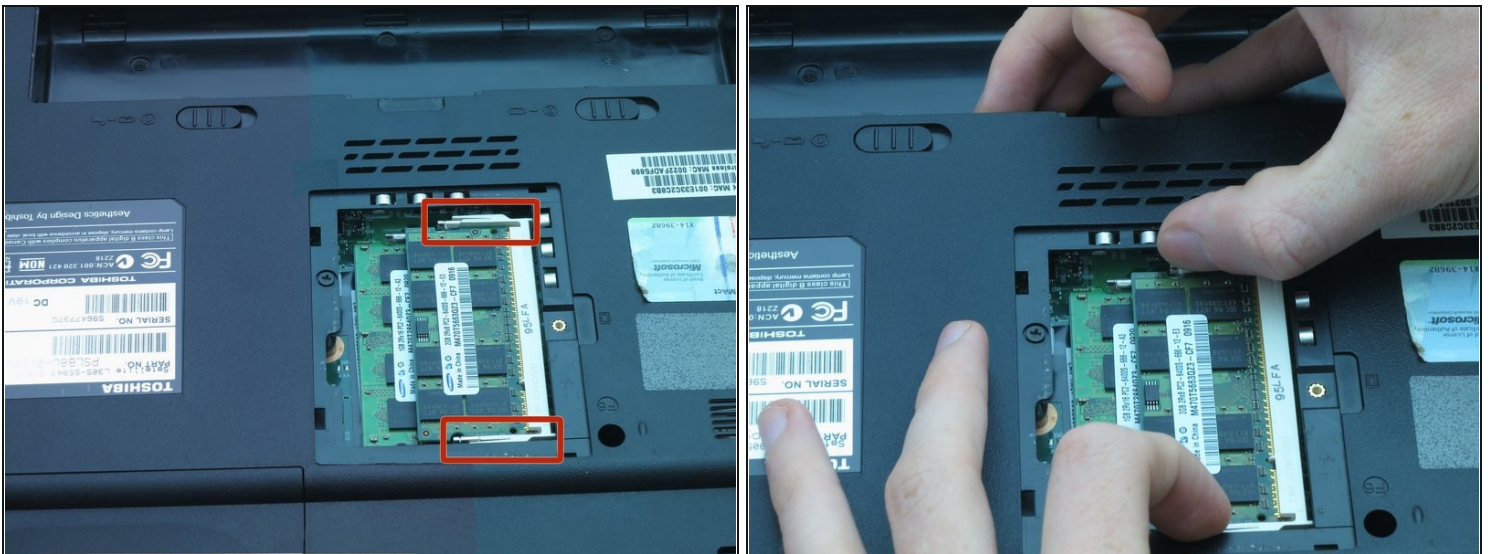
- Using a Phillips #1 screwdriver, turn the screw on the RAM cover until you hear a click.
- ① This is a captive panel screw and remains with the cover.

Step 8



- Remove the RAM cover by inserting the plastic opening tool into the indent and lifting.

Step 9



- Push the white and silver retaining clips away from each side of the RAM card using your fingernails.
 - ① The RAM card should pop up at an angle.

Step 10



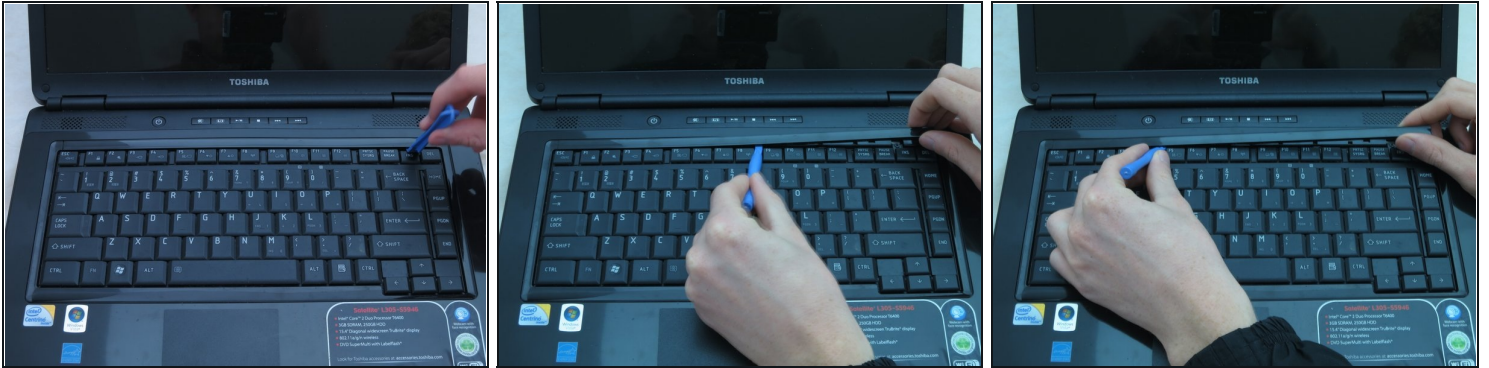
- Pull the RAM card away from the computer.
- Repeat Steps 6 and 7 to remove the other RAM card that may be installed.

Step 11 — Keyboard



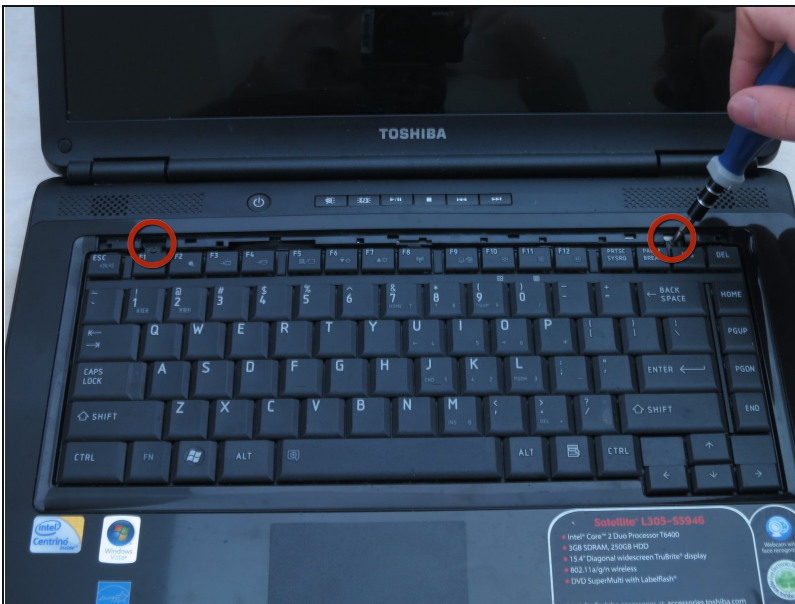
- Place the laptop right-side-up so the screen faces you.

Step 12



- Remove the strip of plastic at the right furthestmost edge of the keyboard using a plastic opening tool.
- Insert the plastic opening tool at either end of the strip.
- Lift upwards and proceed to the other end while repeating this lifting process every one to two inches.

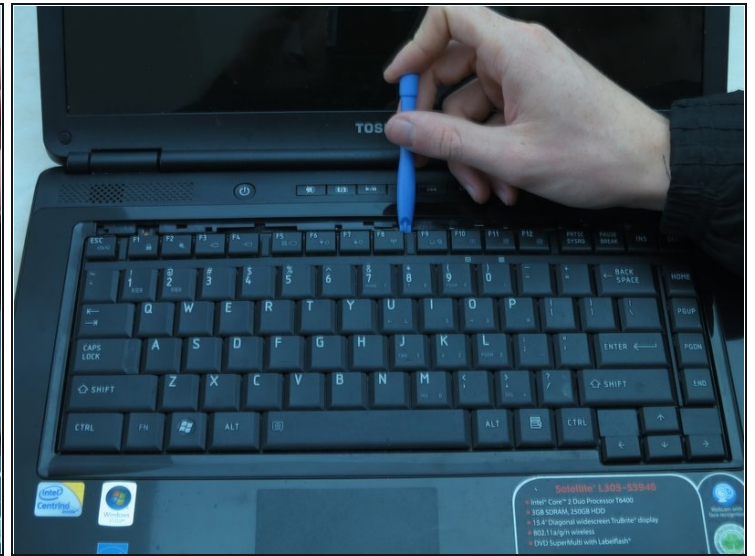
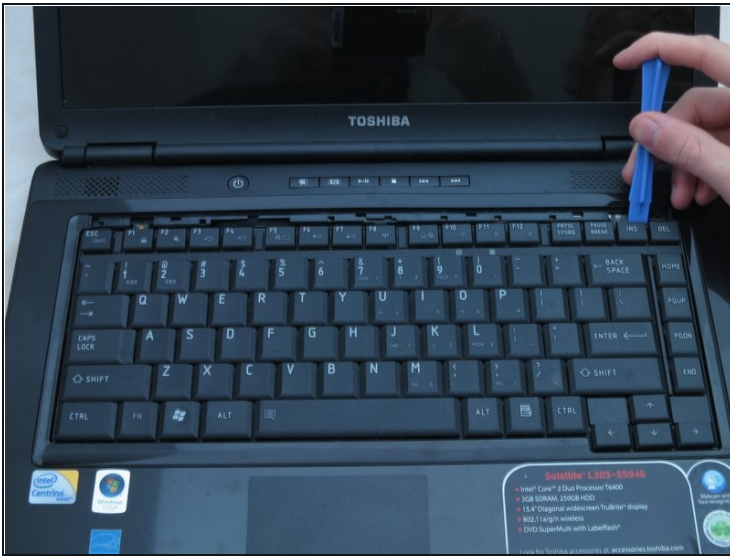
Step 13



⚠ CAUTION: do not allow hardware or debris into the CPU fan and duct.

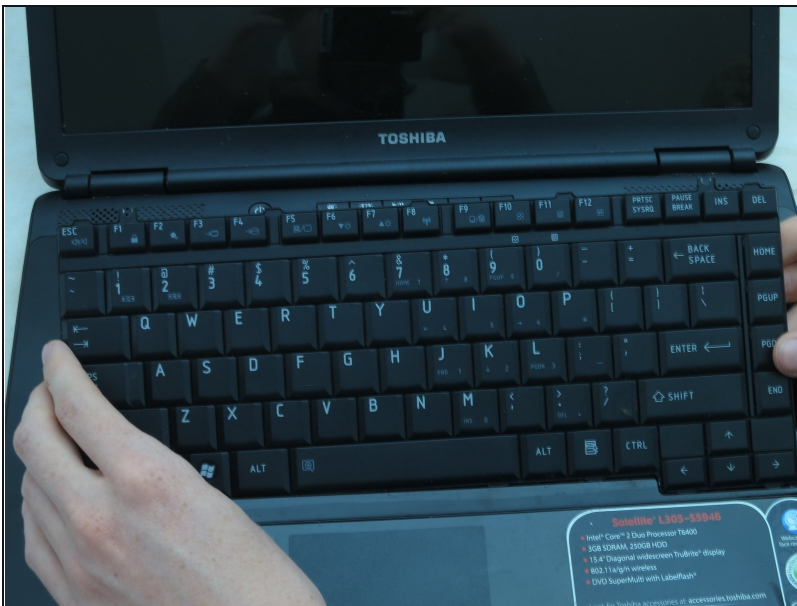
- Remove the two 3-mm screws at the top edge of the keyboard using a Phillips #00 screwdriver.
- ① These are not captive panel screws and, once loosened, will be free to move about the assembly.

Step 14



- Pry the top of the keyboard loose from its casing using a plastic opening tool.

Step 15



- Gently grasp the top of the keyboard and pull it up and toward the screen.

⚠ CAUTION: Pulling too hard could damage the black ribbon cable under the keyboard.

Step 16



- Gently push the two tabs locking the black ribbon cable.
- To remove the black ribbon cable from the motherboard, slide the keyboard toward the screen.
- You may now safely separate the keyboard from the laptop.

Step 17 — Base Housing



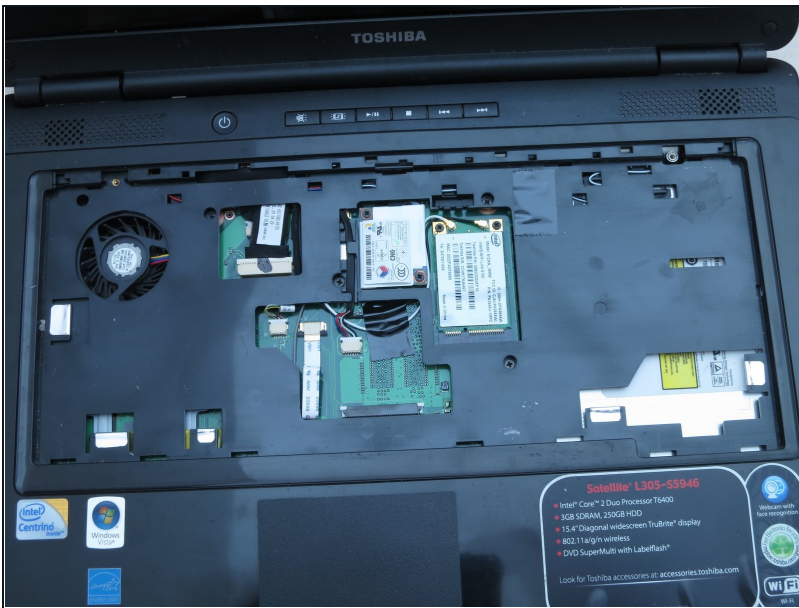
- Place the laptop upside-down with the display hinges facing away from you.

Step 18



- For the following steps, use a Phillips #1 screwdriver.
- Remove the twelve 6-mm screws that border the bottom of the laptop.
- Remove the 6-mm screw located in the lower middle of the device.
- Remove the three 3-mm screws located in the battery bay.
- Remove the one 4-mm screw located near the RAM.

Step 19



- Place the laptop right-side-up so the screen faces you.

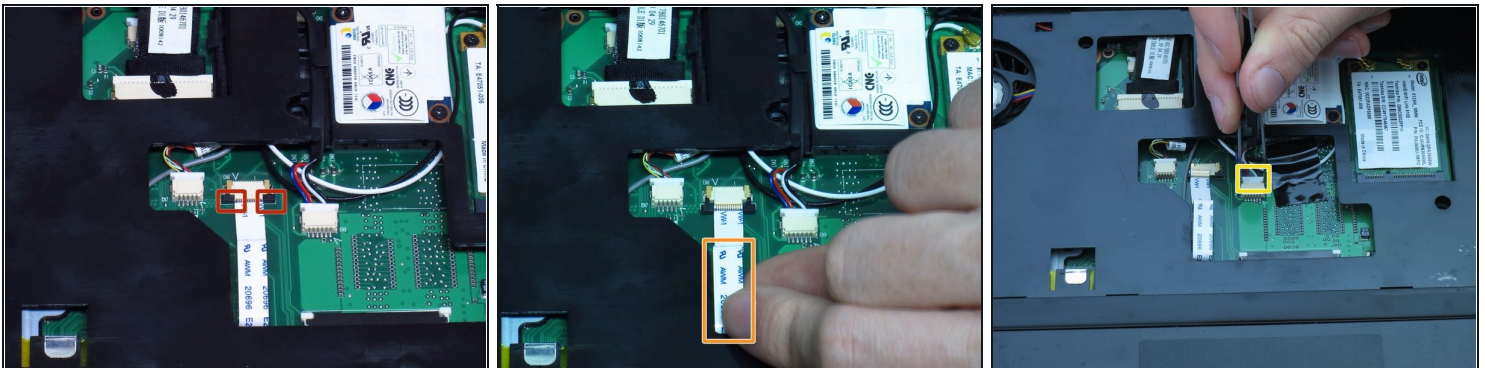
Step 20



⚠ **CAUTION:** do not allow hardware or debris into the CPU fan and duct.

- Use a Phillips #1 screwdriver to remove the five 6-mm screws in the keyboard slot.
- ⓘ These are not captive panel screws and, once loosened, will be free to move about the assembly.

Step 21



- Lock the white ribbon cable into place by gently pulling on the two black tabs.
- Remove the white ribbon cable by pulling it towards you.
- Remove the connector that has the blue, red, black, and white wires using [tweezers](#).

Step 22



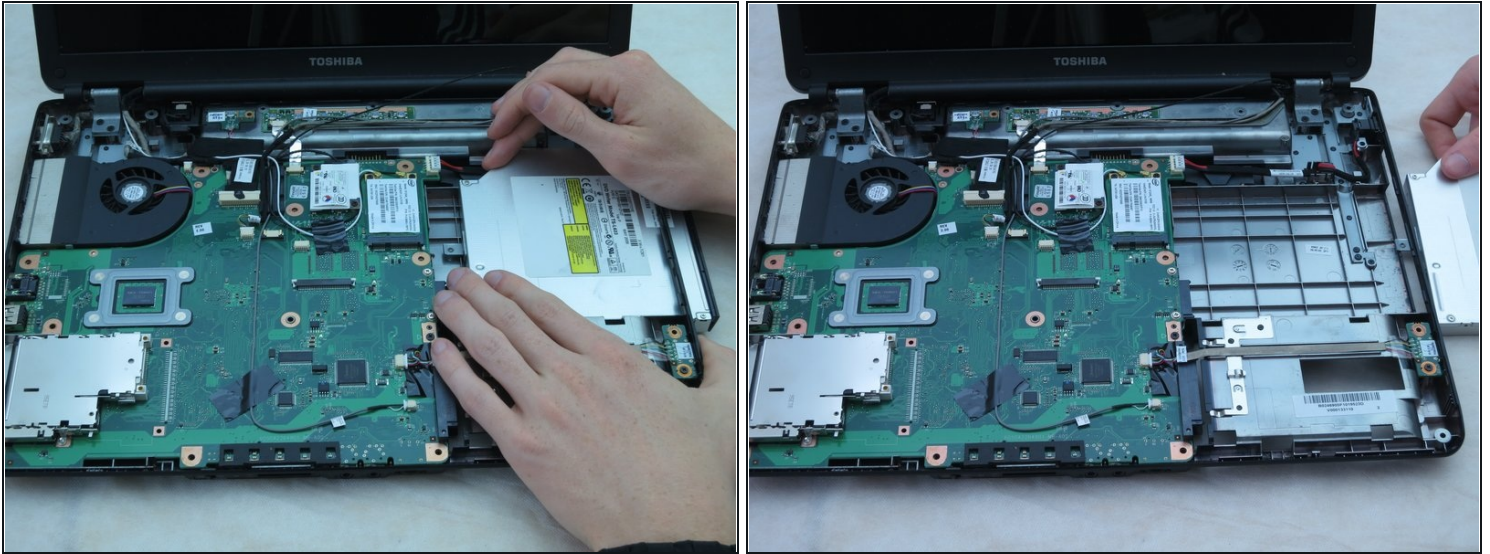
- Separate the laptop upper casing from the lower casing by using an opening tool around the sides of the case to pry it apart.

Step 23 — Power Jack



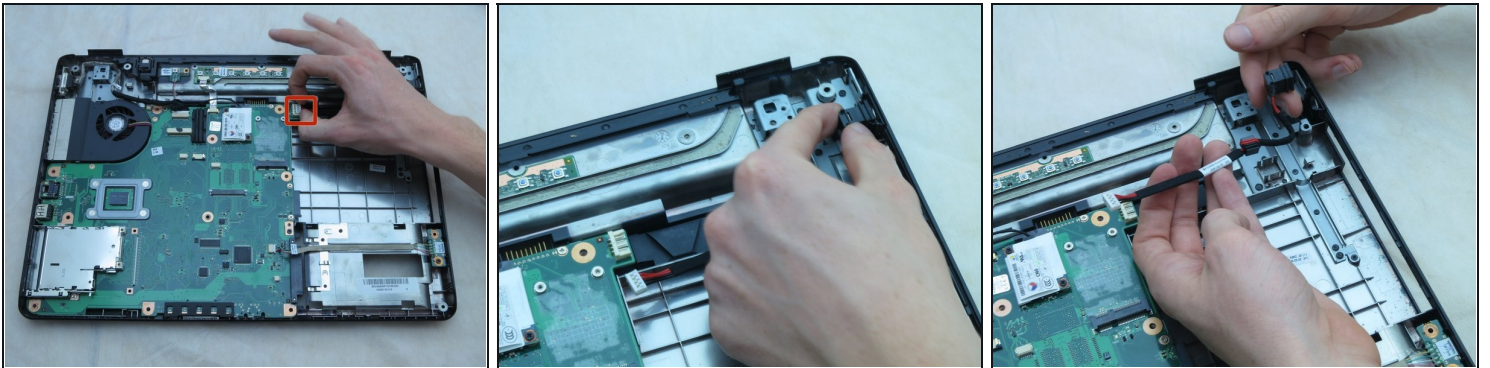
- Flip over your laptop so that it is right-side up.
- Open your laptop so that the screen faces you.

Step 24



- Using your fingers, gently slide the DVD drive out through the opening on the right side.

Step 25



- Using your fingers, gently slide the heading with two black wires and two red wires out of its receptacle. Gently slide the power jack up.

To reassemble your device, follow these instructions in reverse order.