



Optical Drive Removal

Prerequisite-only guide! This guide is part of...

Written By: Carsten Frauenheim



INTRODUCTION

Prerequisite-only guide! This guide is part of another procedure and is not meant to be used alone.

Use this guide to remove the optical drive from an Xbox Series X.

The full optical drive replacement guide can be found [here](#).

TOOLS:

TR8 Torx Security Screwdriver (1)

Spudger (1)

ESD Safe Blunt Nose Tweezers (1)

Tweezers (1)

Soldering Station Hakko FX-888D (1)

Solder ROHS Lead Free Rosin Core (1)

Step 1 — Uncover the back panel screws



 Before you begin, completely power down and unplug all cables from your console.

- Use a pair of tweezers to remove the sticker hiding the first screw on the back panel, near the base.

Step 2



- Use a pair of blunt tweezers to peel back the large sticker on the back panel to reveal the second screw.
- ① You only need to peel this sticker to where you can access the hidden screw. You don't need to pull it completely off.
- ① Technically, these are tamper-evident stickers, but don't worry—[Microsoft can't legally void your warranty](#), as long as you don't damage anything. Have fun!

Step 3 — Remove the back panel screws



- Use a T8 Torx driver to remove the two 7.4 mm-long screws securing the back panel.
- ① Throughout this repair, [keep track of each screw](#) and make sure it goes back exactly where it came from to avoid damaging your console.

Step 4 — Unclip the back panel



- Insert the flat end of a spudger into the gap between the back panel and the shell, near the left side of the base.
- Pry up the back panel to release it from the locking clips.

Step 5



- Insert the flat end of a spudger into the gap between the back panel and the shell, near the right side of the base.
- Pry up the back panel to release it from the locking clips.

Step 6 — Remove the back panel




- Grip the back panel at the opening you just created and pull it up and away from the shell to unclip the long edges.

 During reassembly, press along the edges of the back panel to snap it into place.

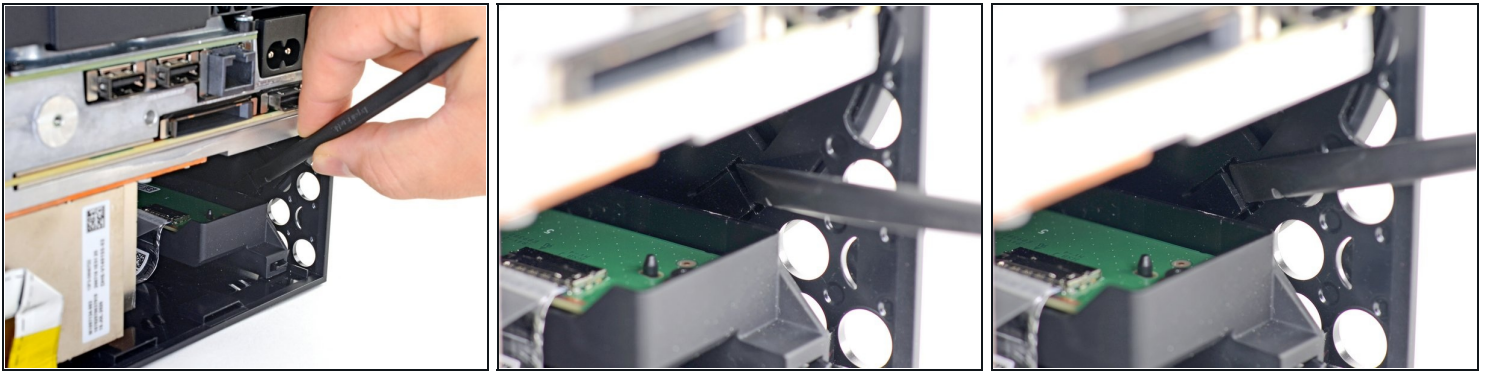
Step 7



 The back panel slots into a gap at the top of the shell.

- Tilt the back panel up and pull it away from the top edge of the shell to release it from the gap.
- Remove the back panel.

Step 8 — Unlatch the base



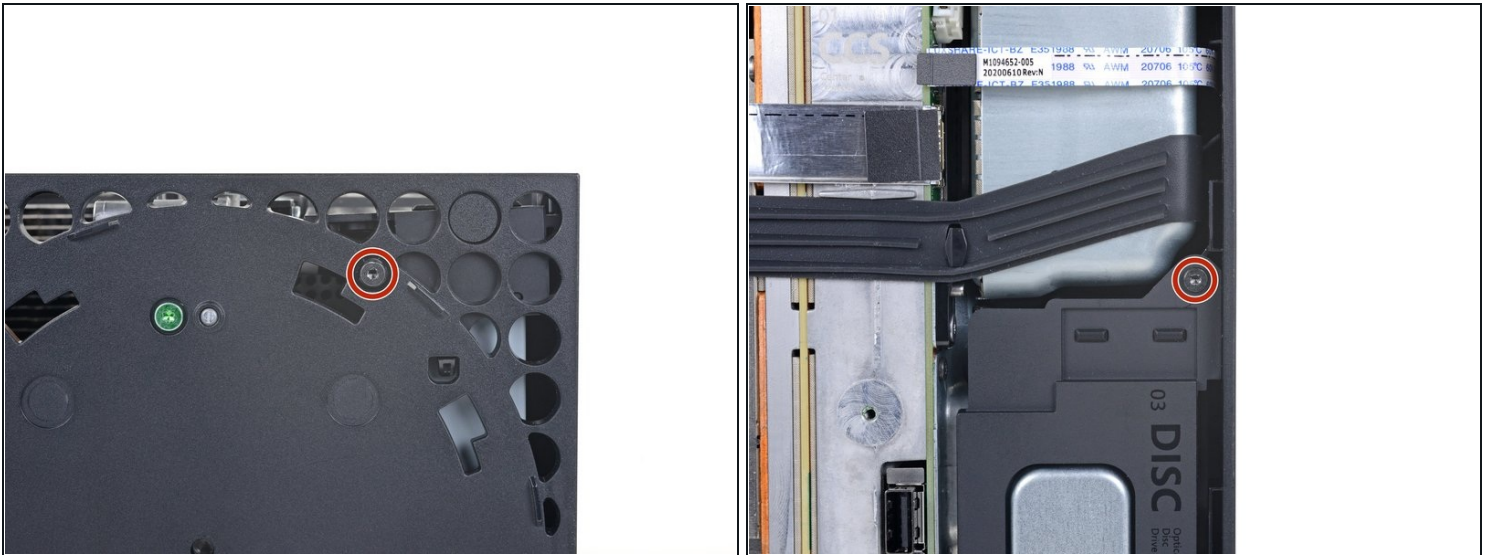
- Use the flat end of a spudger to lift up on the locking tab holding the base to the shell.

Step 9 — Twist and remove the base



- Grip the base and rotate it counterclockwise to unlock it from the shell.
 - ❗ You may need to hold the locking tab open while you get the base started.
 - Remove the base.
- ★ During reassembly, drop the base tabs into their holes on the shell and twist clockwise until the base snaps into the interior locking tab.
- ❗ When locked in place, the "*Hello from Seattle*" line will be parallel with the device's sides.

Step 10 — Remove the optical drive screws



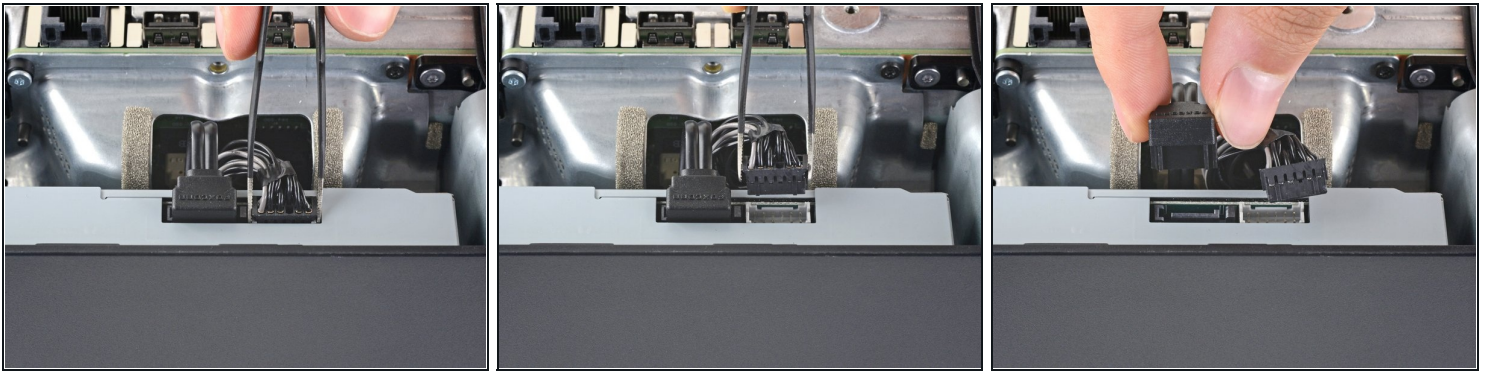
- Use a T8 Torx driver to remove the two 8.8 mm screws securing the optical drive's vibration isolator to the shell: one on the base and one on the top of the isolator.

Step 11 — Remove the vibration isolator



- Lift up the optical drive's vibration isolator to remove it.
 - ⓘ The vibration isolator grips the sides of the optical drive with silicone pads, so you may need to "walk" the isolator off of the drive to slip it off each side.
- ☑ During reassembly, ensure the vibration isolator is pushed down and around both edges of the optical drive, so it sits flush with the rest of the center chassis.

Step 12 — Disconnect the power and data cables

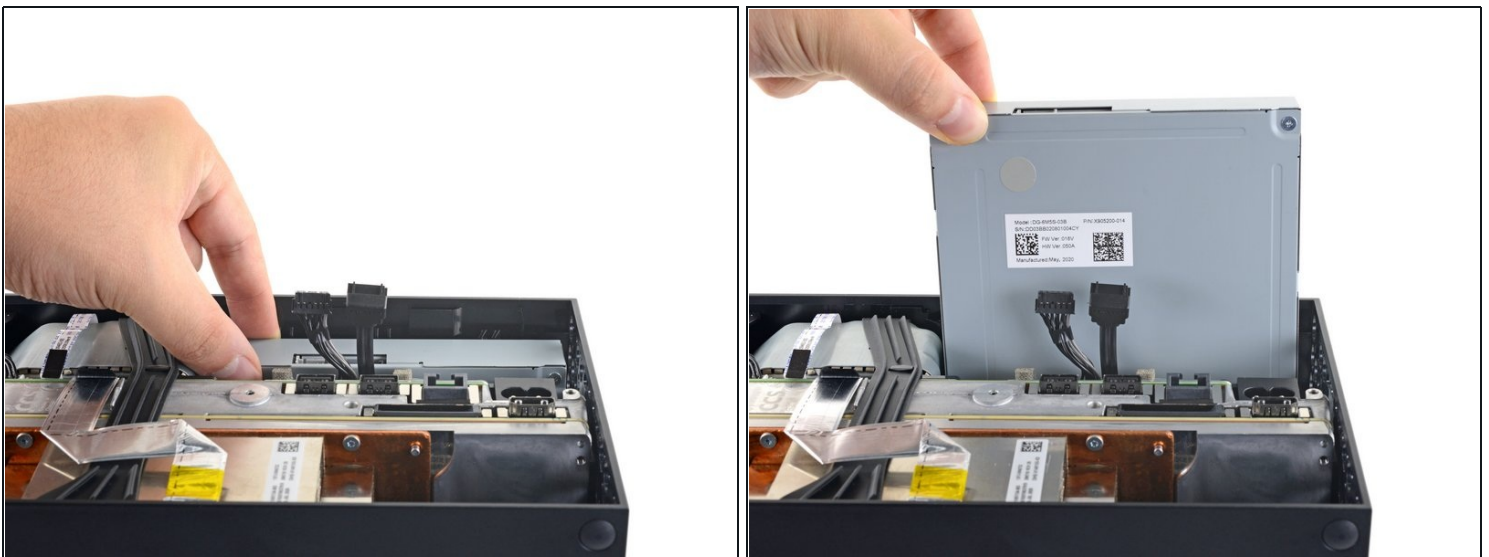


- Use a pair of blunt tweezers to grip the edges of the optical drive power connector and pull up to disconnect it from the optical drive.

⚠ Always pull cables by their connectors and not the wires themselves.

- Use your fingers to pull up and disconnect the data cable from the optical drive.

Step 13 — Remove the optical drive



- Grip the top edge of the optical drive and pull it out of its slot in the shell to remove it.
- ✦ During reassembly, align the pegs on the bottom edge of the optical drive with the guide holes on the bottom of the shell.
- ⓘ If the drive is misaligned, the top vibration isolator will not be able to be installed correctly, and the disc reader will be misaligned with the front of the console.

To reassemble your device, follow these instructions in reverse order.

Take your e-waste to an [R2 or e-Stewards certified recycler](#).

Repair didn't go as planned? Try some [basic troubleshooting](#), or ask our [Xbox Series X Answers community](#) for help.