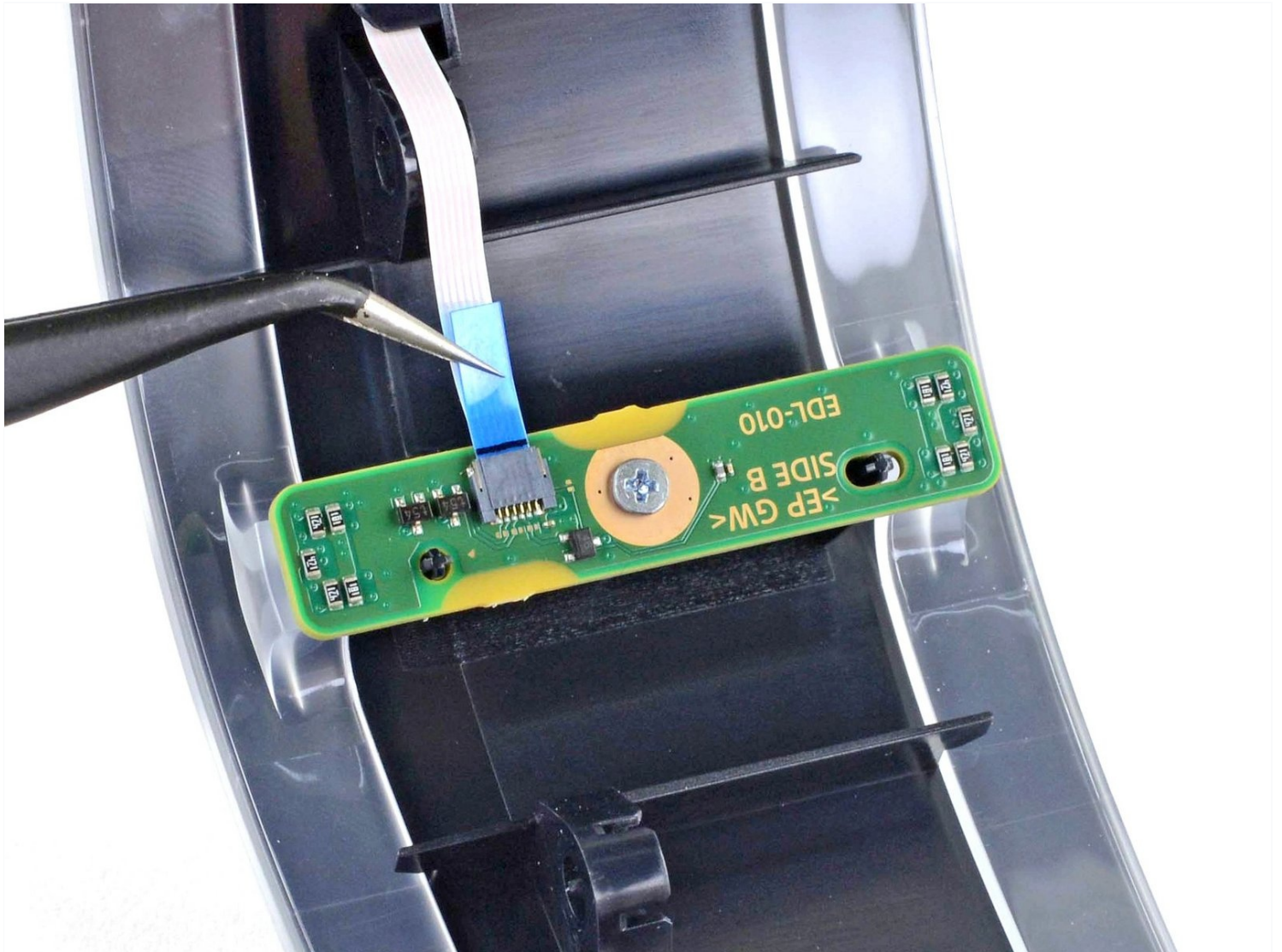




PlayStation 5 LED Board Replacement

Follow this guide to remove and replace the LED...

Written By: Robert Boyd



INTRODUCTION

Follow this guide to remove and replace the LED board on a PlayStation 5.

Before you begin, completely **power down and unplug all cables** from your console. Remember to follow general electrostatic discharge (ESD) safety procedures while repairing the console.

TOOLS:

Flathead 3/32" or 2.5 mm Screwdriver (1)

TR8 Torx Security Screwdriver (1)

Spudger (1)

Tweezers (1)

Phillips #0 Screwdriver (1)

Step 1 — Remove the stand screw



- If your PlayStation 5 is in its vertical orientation, flip it upside down so the stand is facing up.
- ① If your PlayStation 5 is in its horizontal orientation, skip to Step 6.
- ⚠ Work on a flat surface to prevent your PlayStation from falling over.
- Use a coin or a flathead screwdriver to remove the 26.5 mm-long stand screw.

Step 2 — Remove the vertical stand



- Lift straight up to remove the stand.

Step 3 — Store the stand screw



- Insert the screw into the cubby on the bottom of the stand.

Step 4 — Cap the screw hole



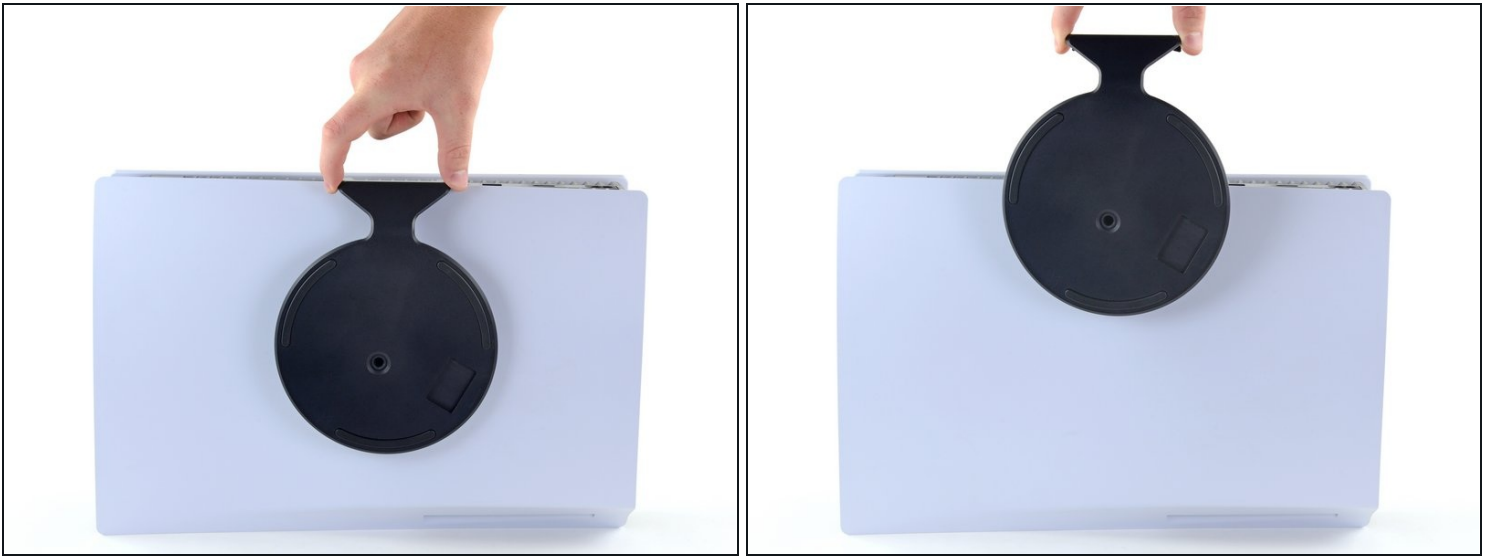
- Use a pair of tweezers or your fingernail to remove the cap from the cubby.
- Use your finger to press the cap into the screw hole.

Step 5 — Close the cubby



- Twist the stand counterclockwise to close the cubby.

Step 6 — Remove the horizontal stand



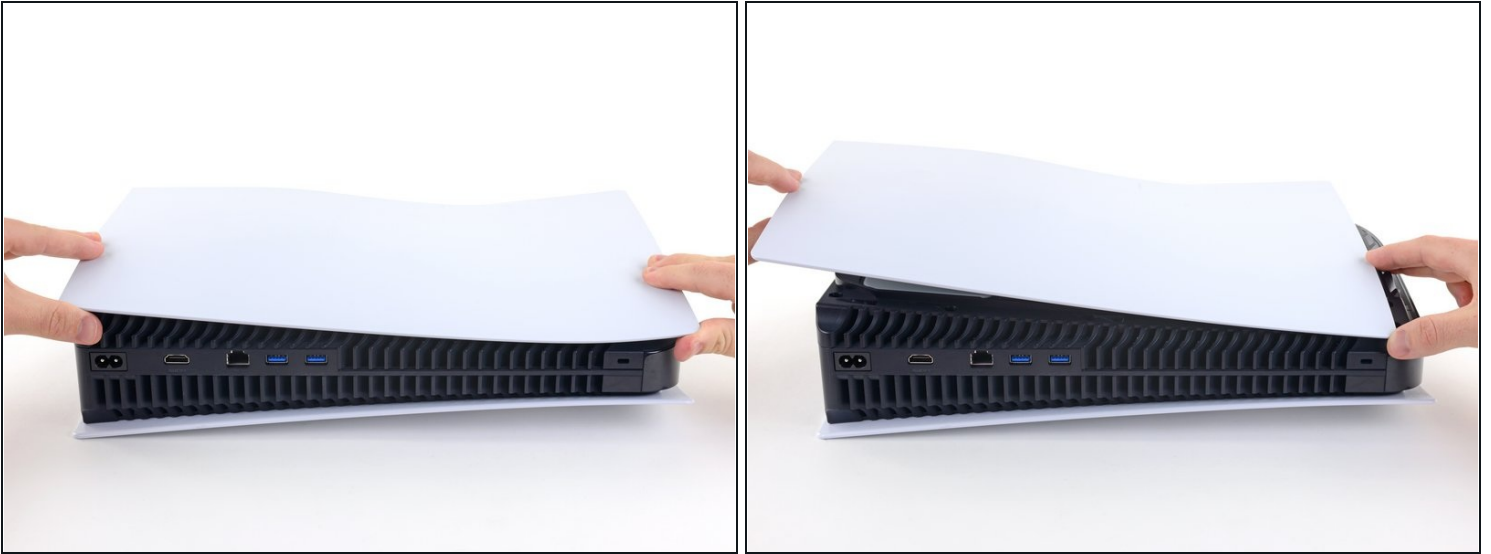
- If your PlayStation 5 is in its horizontal orientation, rest it on its face with the charging port facing up.
- Lift the stand straight up to remove it.

Step 7 — Remove the right faceplate



- Flip the device over so that the USB and ethernet ports are on the left side from your perspective.
- Lift up the corner of the faceplate to unclip it from the case.

Step 8



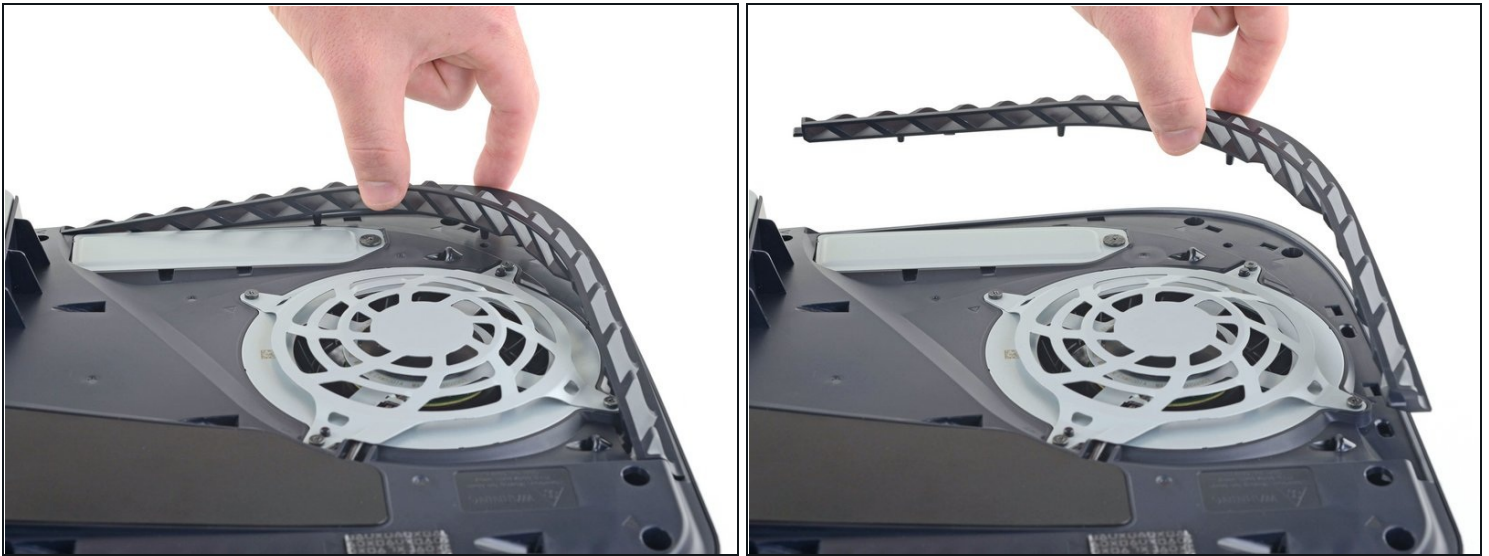
- While lifting up the corner, slide the faceplate towards the bottom of the device.
- Remove the right faceplate.

Step 9 — Pry up the grille



- Insert the flat end of a spudger underneath the grille and into the gap above the fan.
- Lift up with the spudger to pry the grille away from the case.

Step 10 — Remove the grille



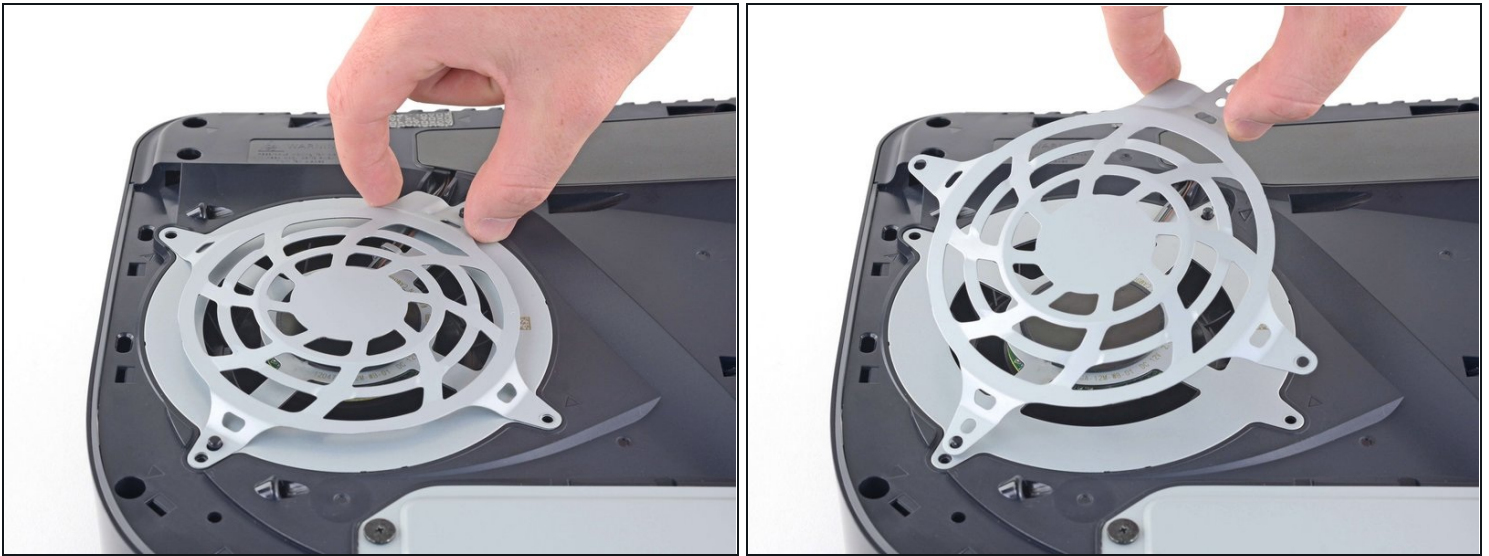
- Lift the grille away from the case to remove it.

Step 11 — Remove the fan shroud screws



- Use a TR8 Torx security driver to remove the four screws securing the fan shroud to the case:
 - Two 23.3 mm-long screws
 - One 11.4 mm-long screw
 - One 31 mm-long screw
- ① Throughout this repair, [keep track of each screw](#) and make sure it goes back exactly where it came from to avoid damaging your console.

Step 12 — Remove the fan shroud



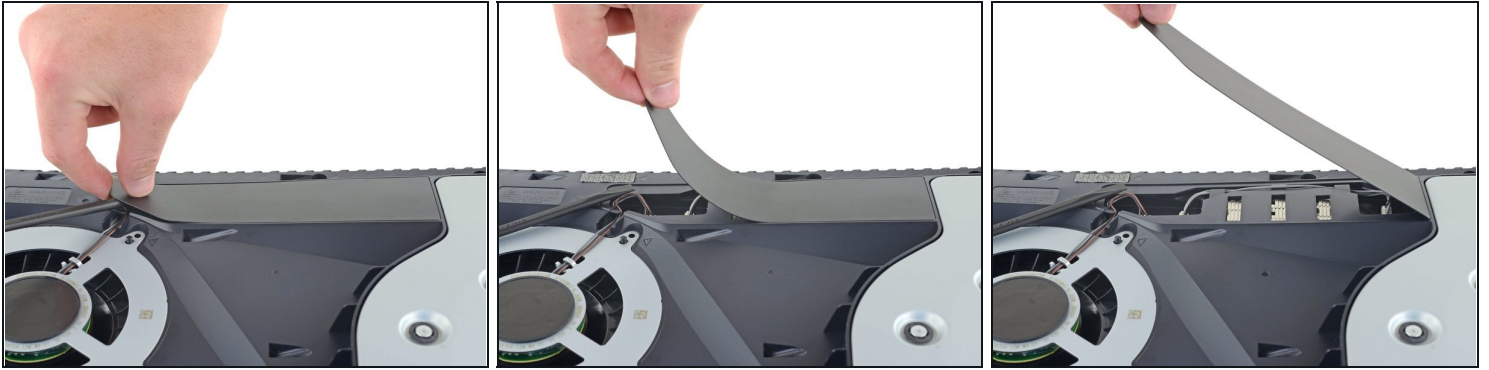
- Lift the fan shroud straight up to remove it.

Step 13 — Remove the wire cover



- Insert the flat end of a spudger beneath the black wire cover and into the gap above the fan wires.
⚠️ Pry only on the wire cover, not on the fan wires themselves.
- Use the spudger to peel up the wire cover until you can grip it with your fingers.

Step 14



- Use your fingers to peel off the wire cover.

Step 15 — Disconnect the fan



- Use your fingers to grip the edges of the fan cable connector, and pull up to disconnect it from the motherboard.

⚠ Always pull cables by their connectors and not the wires themselves.

Step 16 — Remove the fan



- Lift the fan up and out of the case to remove it.

Step 17 — Remove the SSD cover



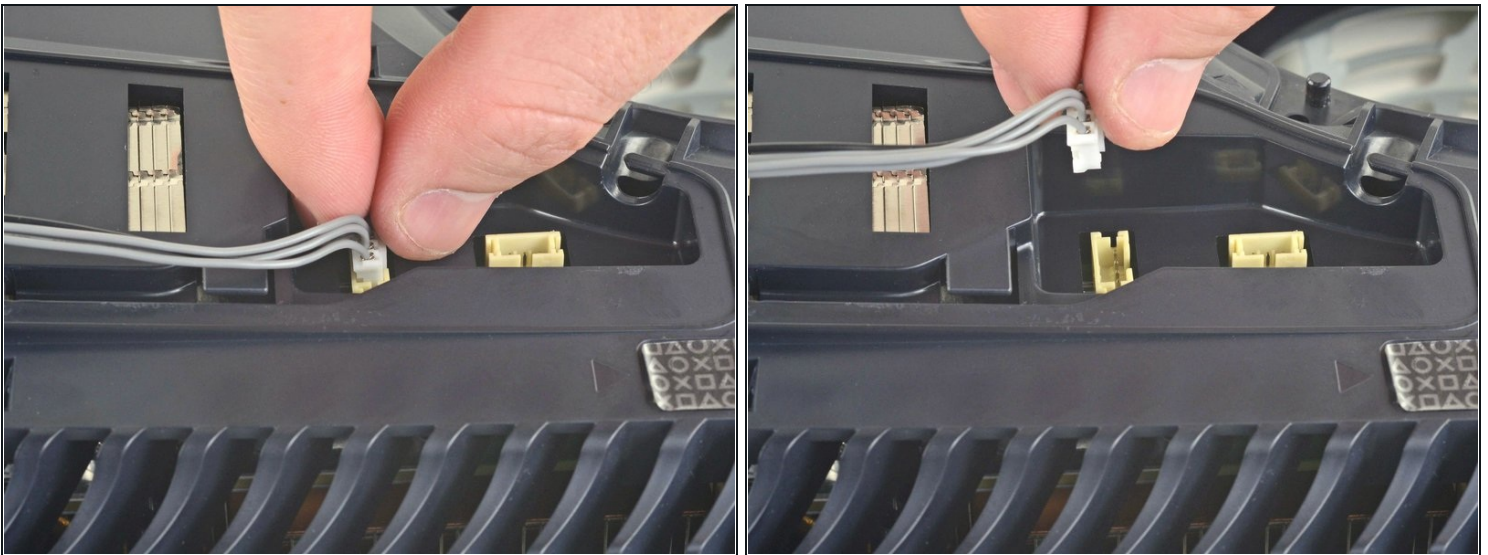
- Use a Phillips screwdriver to remove the 17 mm-long SSD cover screw.

Step 18



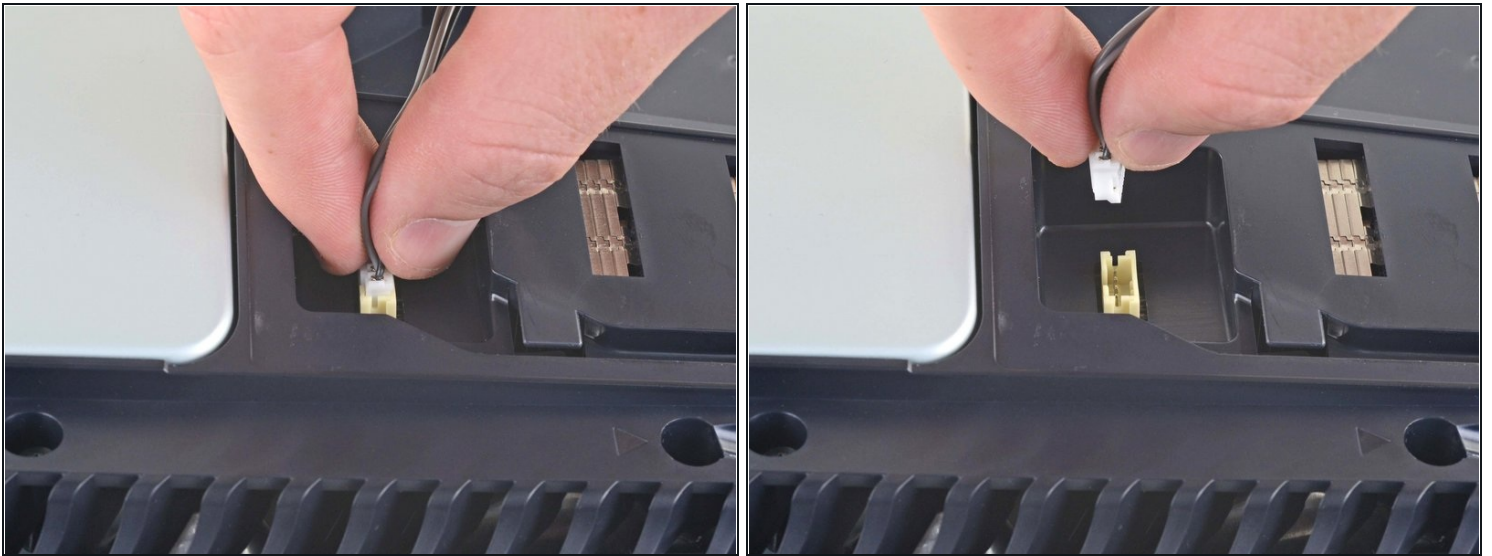
- Use your finger to slide the SSD cover towards the top of the device to unclip it from the case.
- Remove the SSD cover.

Step 19 — Remove the optical drive wire



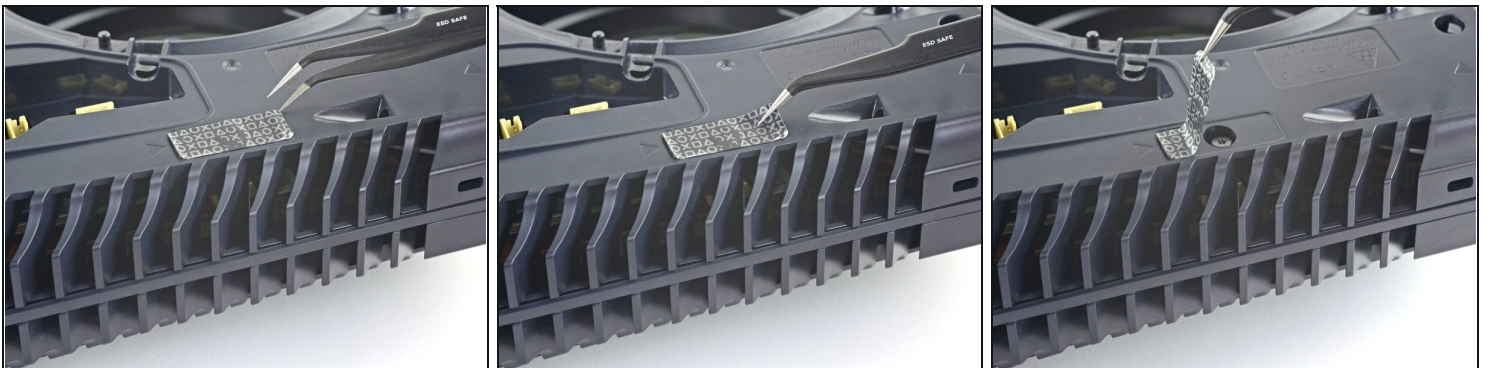
- Use your fingers to grip the edges of the optical drive cable connector, and pull up to disconnect it from the motherboard.
- ⚠ Always pull cables by their connectors and not the wires themselves.**

Step 20



- Use your fingers to grip the edges of the optical drive cable connector, and pull up to disconnect it from the optical drive.

Step 21 — Remove the tamper-evident sticker



- Use a pair of tweezers to remove the tamper-evident sticker covering the remaining case screw.
 - ① If your PlayStation 5 hasn't been opened before, this sticker will be completely black. The pattern will appear after you remove it.
 - ① Technically, these are tamper-evident stickers—but don't worry—[Sony can't legally void your warranty](#), as long as you don't damage anything. Have fun!

Step 22 — Remove the case screws



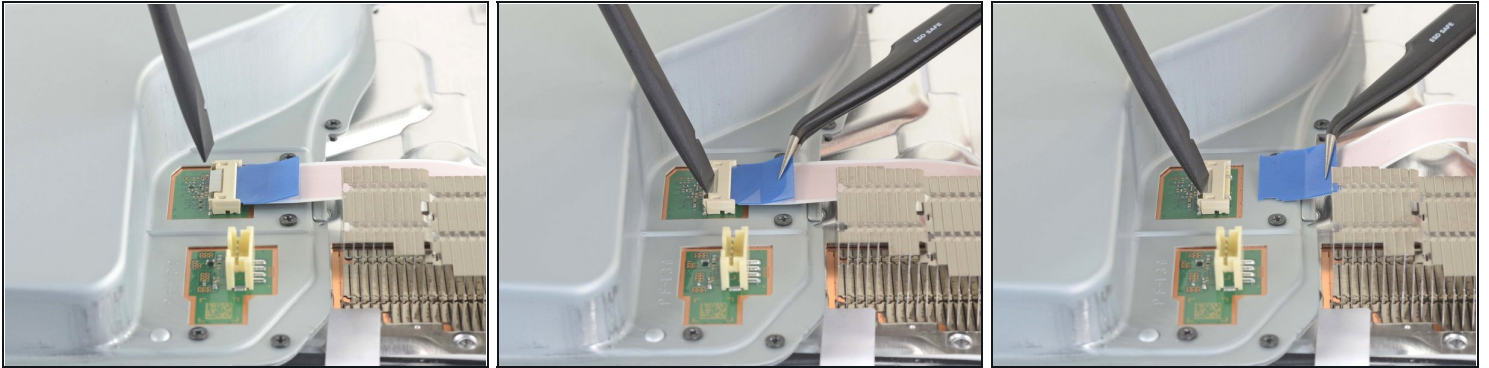
- Use a T8 Torx driver to remove the eleven screws securing the case:
 - Six 18.6 mm-long screws
 - Two 23.3 mm-long screws
 - Two 43.2 mm-long screws
 - One 7.3 mm-long screw

Step 23 — Remove the case



- Lift the case straight up to remove it.

Step 24 — Remove the optical drive ribbon cable



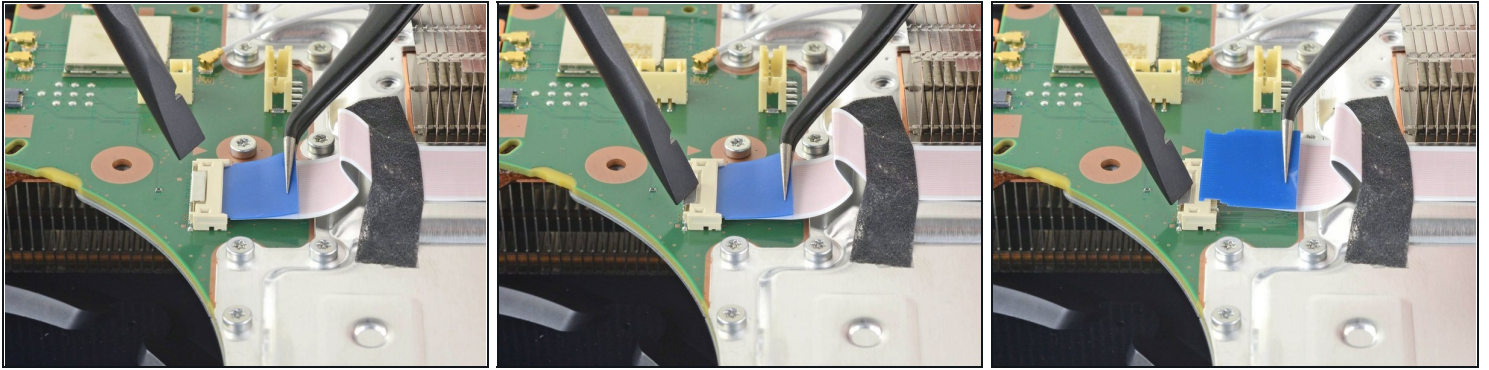
- Use the flat end of a spudger to press down on the optical drive connector's metal locking tab.
 - With the metal tab depressed, use a pair of tweezers to pull the blue pull tab directly away from the connector to disconnect the cable from the optical drive.
- ⚠ Pull only on the pull tab, not the cable itself.

Step 25 — Remove the optical drive



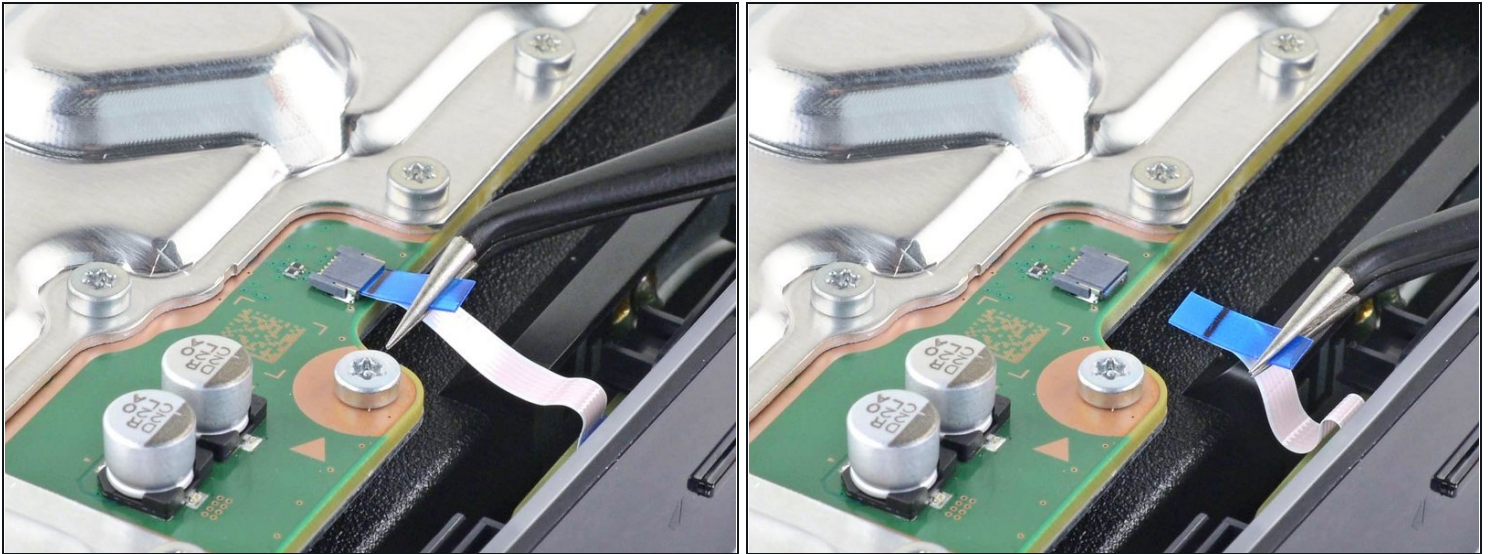
- Lift the optical drive away from the device to remove it.

Step 26 — Remove the optical drive ribbon cable



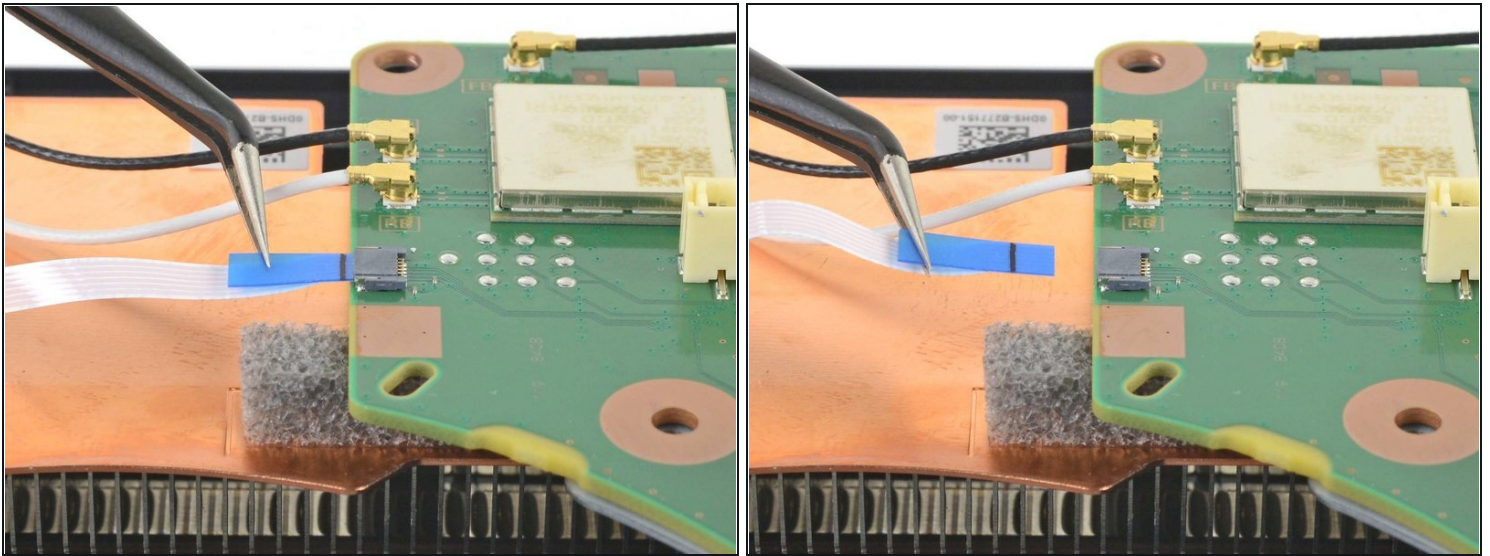
- Use the flat end of a spudger to press down on the optical drive connector's metal locking tab.
- With the metal tab depressed, use a pair of tweezers to pull the blue pull tab directly away from the connector to disconnect the cable from the motherboard.

Step 27 — Remove the power and eject button ribbon cable



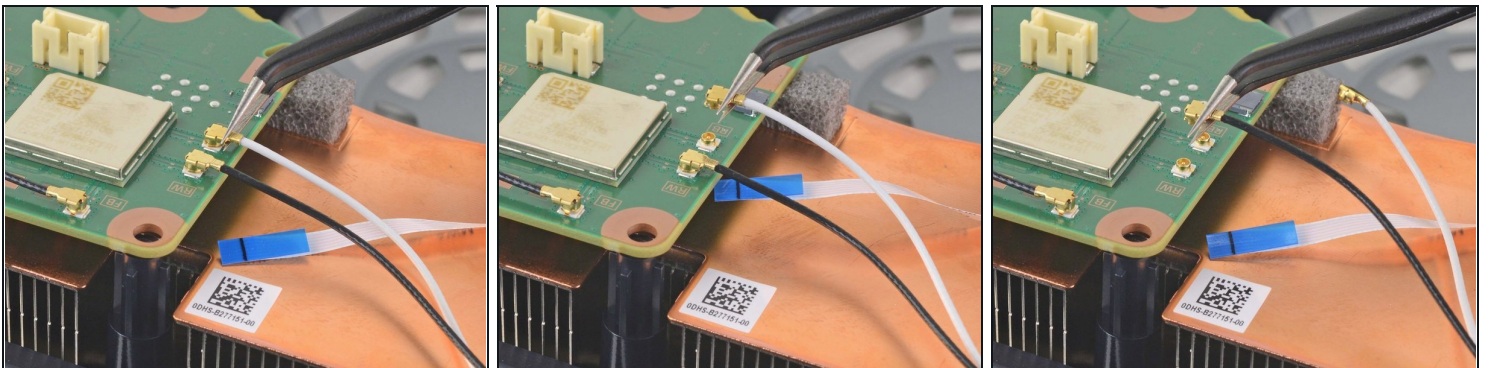
- Use a pair of tweezers to pull the blue pull tab directly away from the connector to disconnect the power and eject button ribbon cable.

Step 28 — Remove the LED ribbon cable



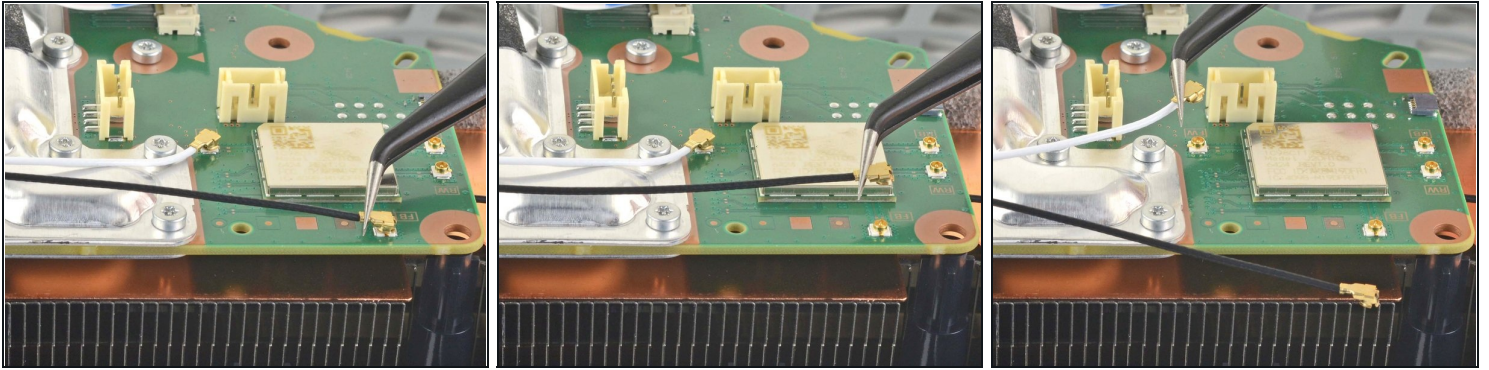
- Use a pair of tweezers to pull the blue pull tab directly away from the connector to disconnect the LED ribbon cable.

Step 29 — Remove the antenna wires



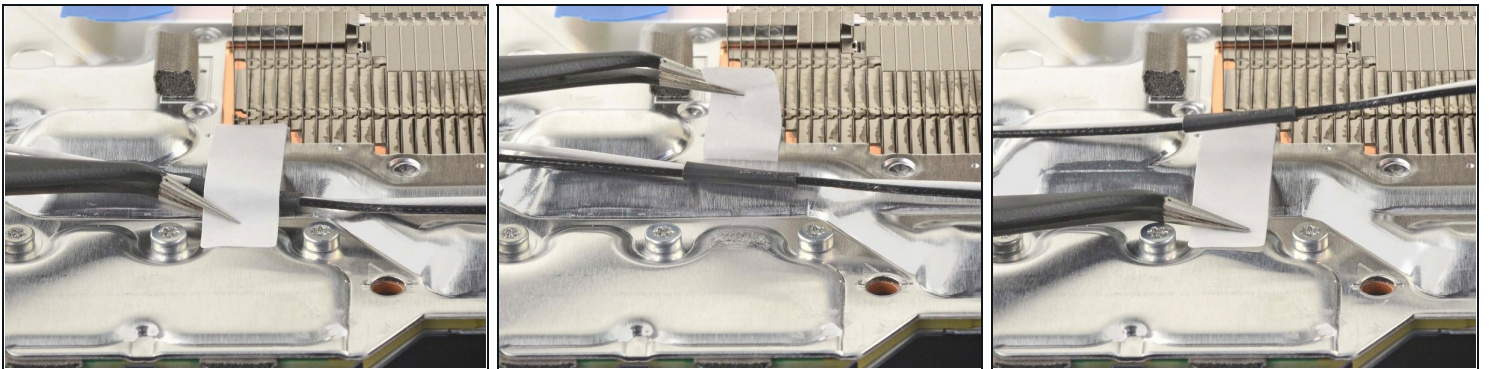
- Use a pair of tweezers to grip the white Wi-Fi antenna wire at its metal base, as close to the connector as possible.
 - Lift the wire's connector straight up to disconnect it from the motherboard.
 - Repeat for the black Wi-Fi antenna wire.
- ⓘ Some board revisions may not have these antenna wires. If your board is missing these connectors, skip this step.

Step 30



- Use a pair of tweezers to grip the black or blue power supply antenna wire at its metal base, as close to the connector as possible.
- Lift the wire's connector straight up to disconnect it from the motherboard.
- Repeat for the white power supply antenna wire.

Step 31 — Remove the white stickers



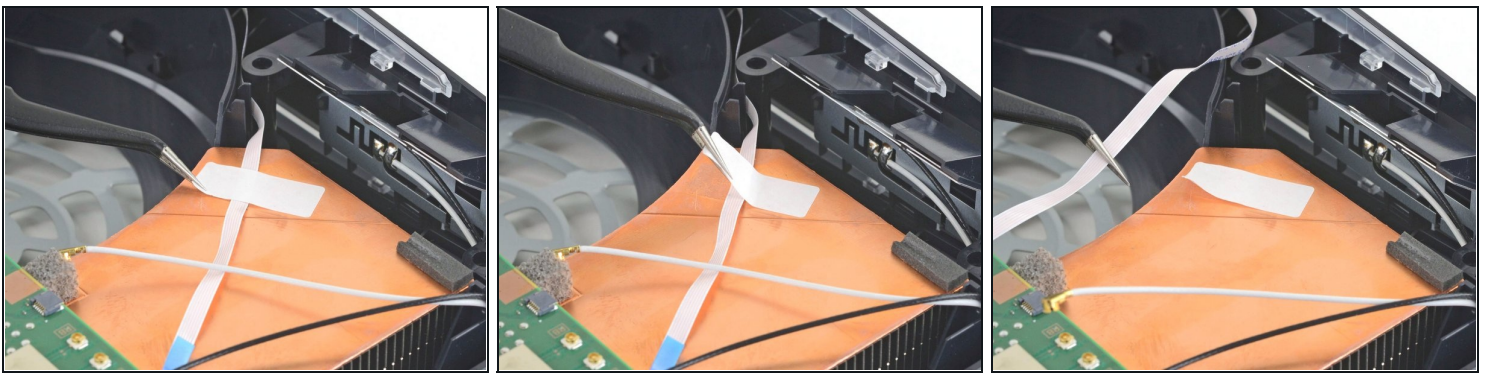
- Use a pair of tweezers to peel back the white sticker holding the antenna wires to the top shield plate.
- Remove the antenna wires from underneath the sticker.
- Press the white sticker back down onto the top shield plate so it can be reused.

Step 32



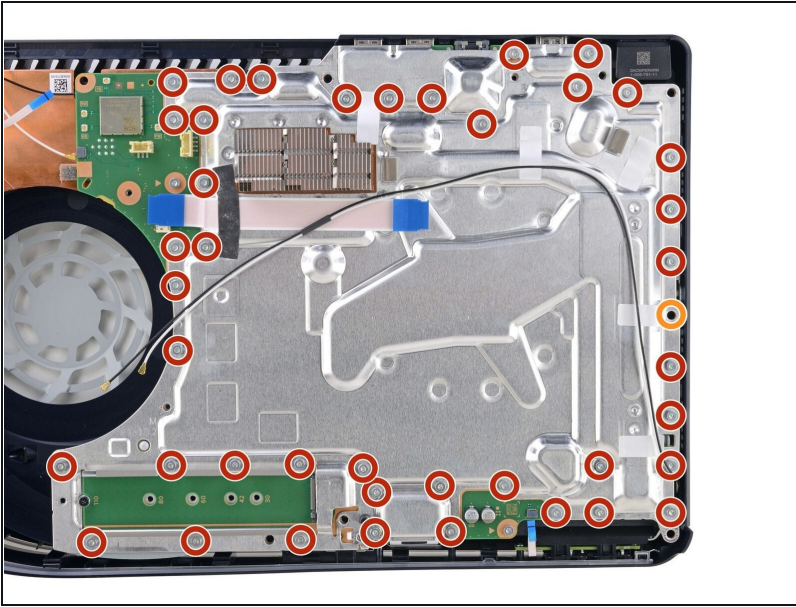
- Repeat the previous step to peel back the four remaining stickers.

Step 33



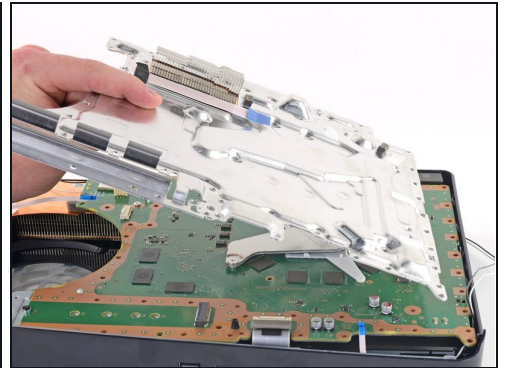
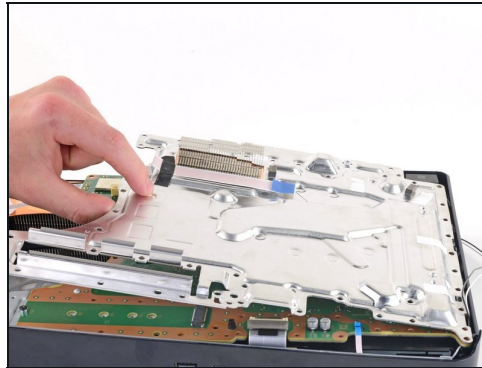
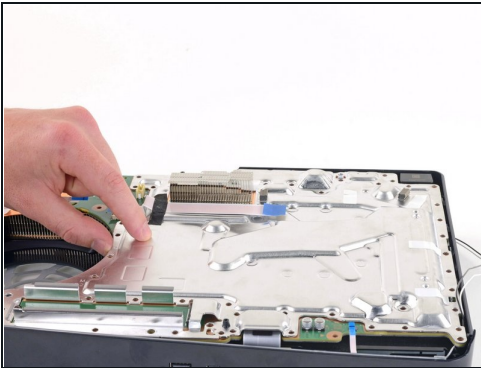
- Use a pair of tweezers to peel back the white sticker holding the LED ribbon cable to the heat sink.
- Remove the LED ribbon cable from underneath the sticker.
- Press the white sticker back down onto the heat sink so it can be reused.

Step 34 — Remove the top shield plate screws



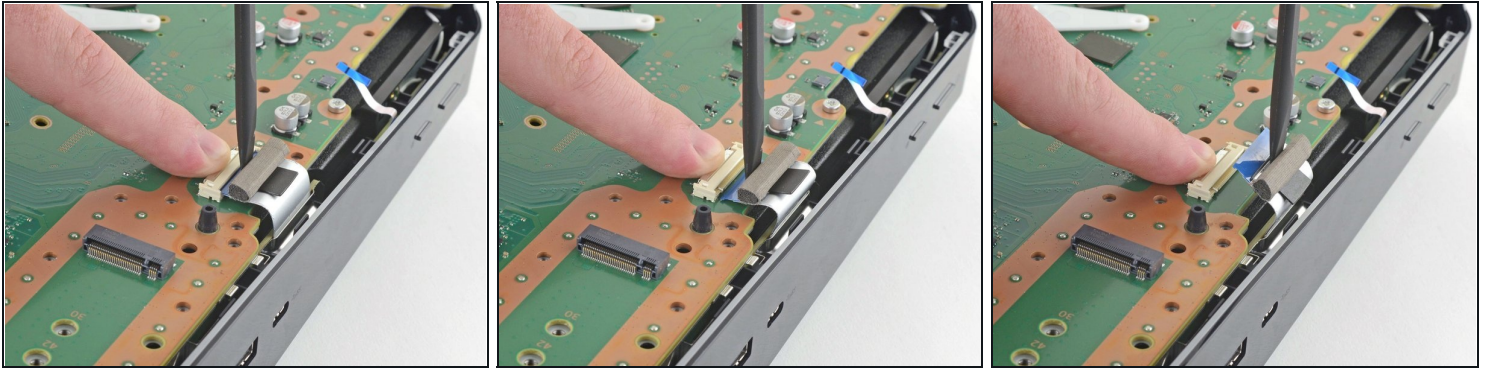
- Use a T8 Torx driver to remove the forty-two screws securing the top shield plate:
 - Forty-one 7.3 mm-long screws
 - One 43.2 mm-long screw

Step 35 — Remove the top shield plate



- Lift the top shield plate off of the motherboard to remove it.
- ☒ During reassembly, this is a good point to replace any thermal pads on the top of the main board, if necessary. The pads may be stuck to both the top shield plate and the main board.
- ⚠ It's important that the replacement pads are the same thickness as the originals, otherwise the foam around the APU may not seal properly.**

Step 36 — Disconnect the USB board



- Use your finger to depress the metal locking tab on the USB board cable's board connector.
- With the metal tab depressed, place the flat end of a spudger against the insulating foam pad on the ribbon cable and pull it directly away from the connector to disconnect it.

Step 37 — Remove the left faceplate



- Lift up the corner of the faceplate with the PlayStation logo to unclip it from the case.

Step 38



- While lifting up the corner, slide the faceplate towards the bottom of the device.
- Remove the left faceplate.

Step 39 — Remove the screws



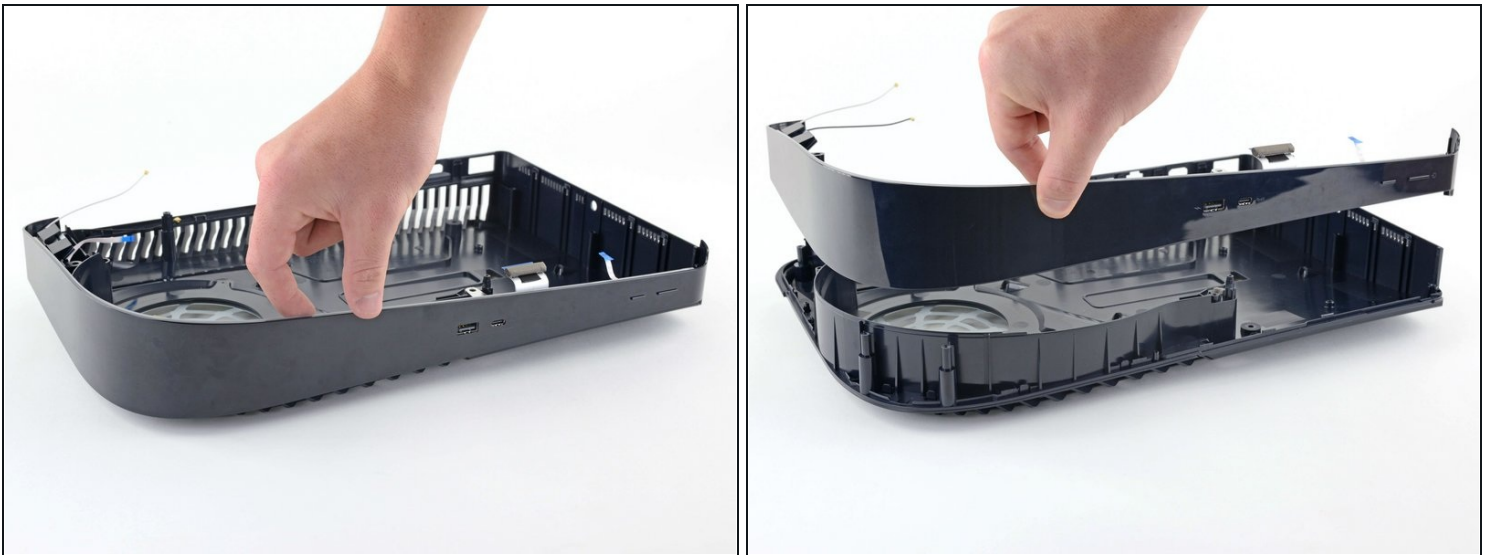
- Use a Torx T8 driver to remove the two 29.4 mm-long screws securing the case to the motherboard and heat sink assembly.

Step 40 — Remove the case



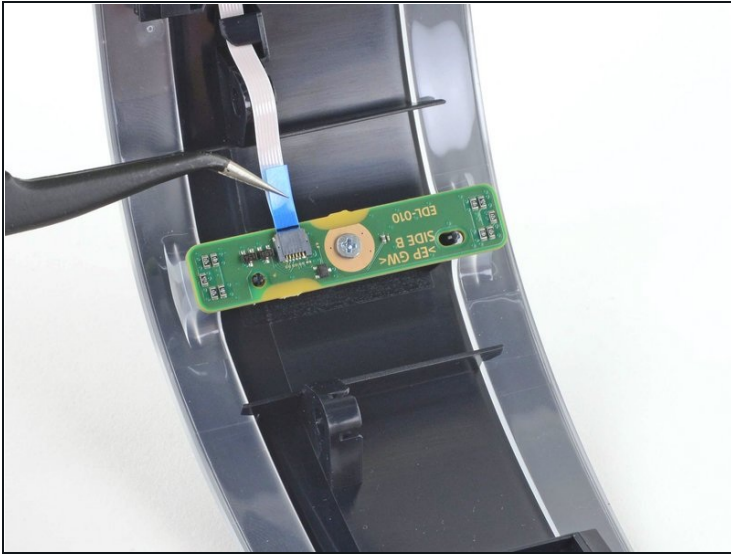
- Lift the front edge of the case off of the motherboard and heat sink assembly.
- With the front edge elevated, push the case back, away from the motherboard and heat sink assembly, to maneuver the charging port out of its slot in the case.
- Remove the case.

Step 41 — Remove the middle panel



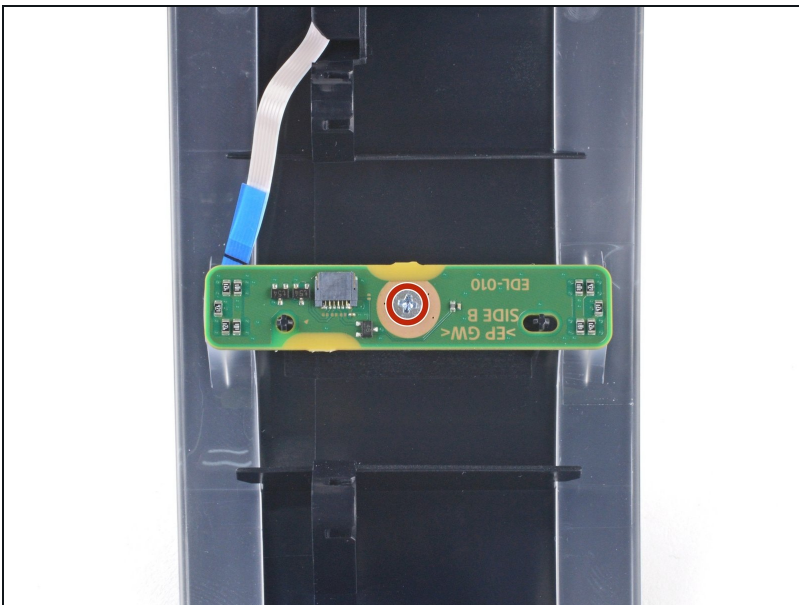
- Lift up to remove the middle panel from the case.

Step 42 — Disconnect the LED ribbon cable



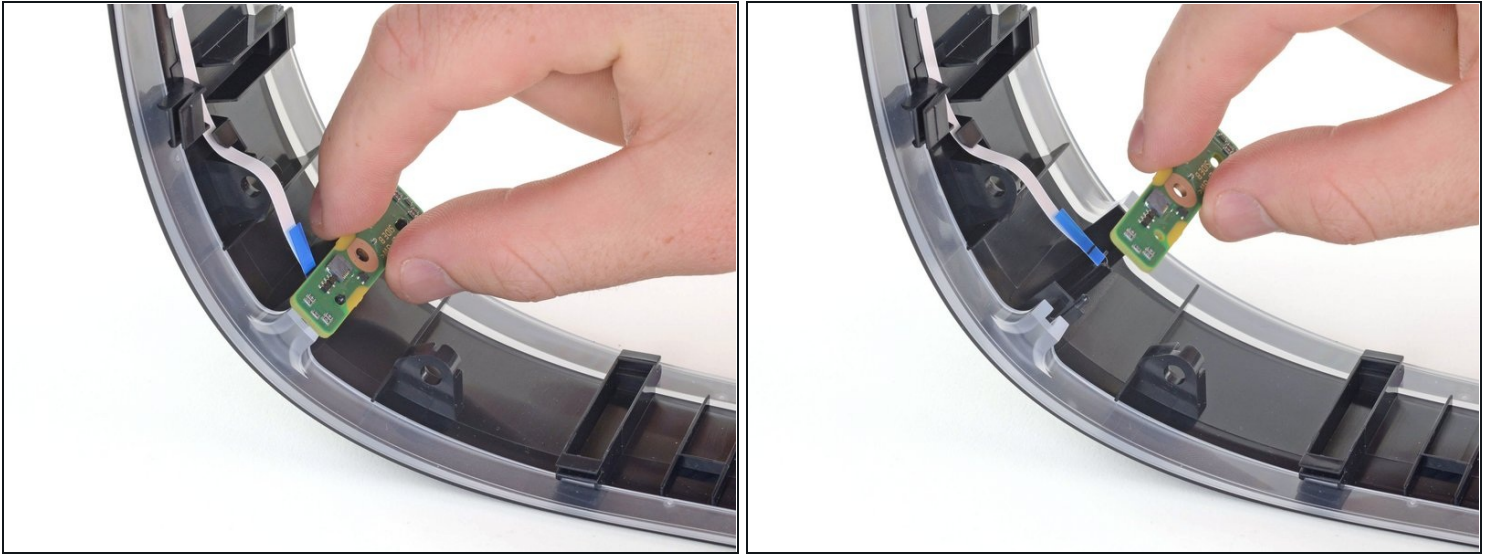
- Use a pair of tweezers to pull the blue pull tab directly away from the connector to disconnect the LED board ribbon cable.

Step 43 — Remove the LED board screw



- Use a Phillips screwdriver to remove the 6.5 mm-long screw securing the LED board to the middle panel.

Step 44



- Remove the LED board.

To reassemble your device, follow these instructions in reverse order.

Take your e-waste to an [R2 or e-Stewards certified recycler](#).

Repair didn't go as planned? Try some [basic troubleshooting](#), or ask our [PlayStation 5 Answers community](#) for help.