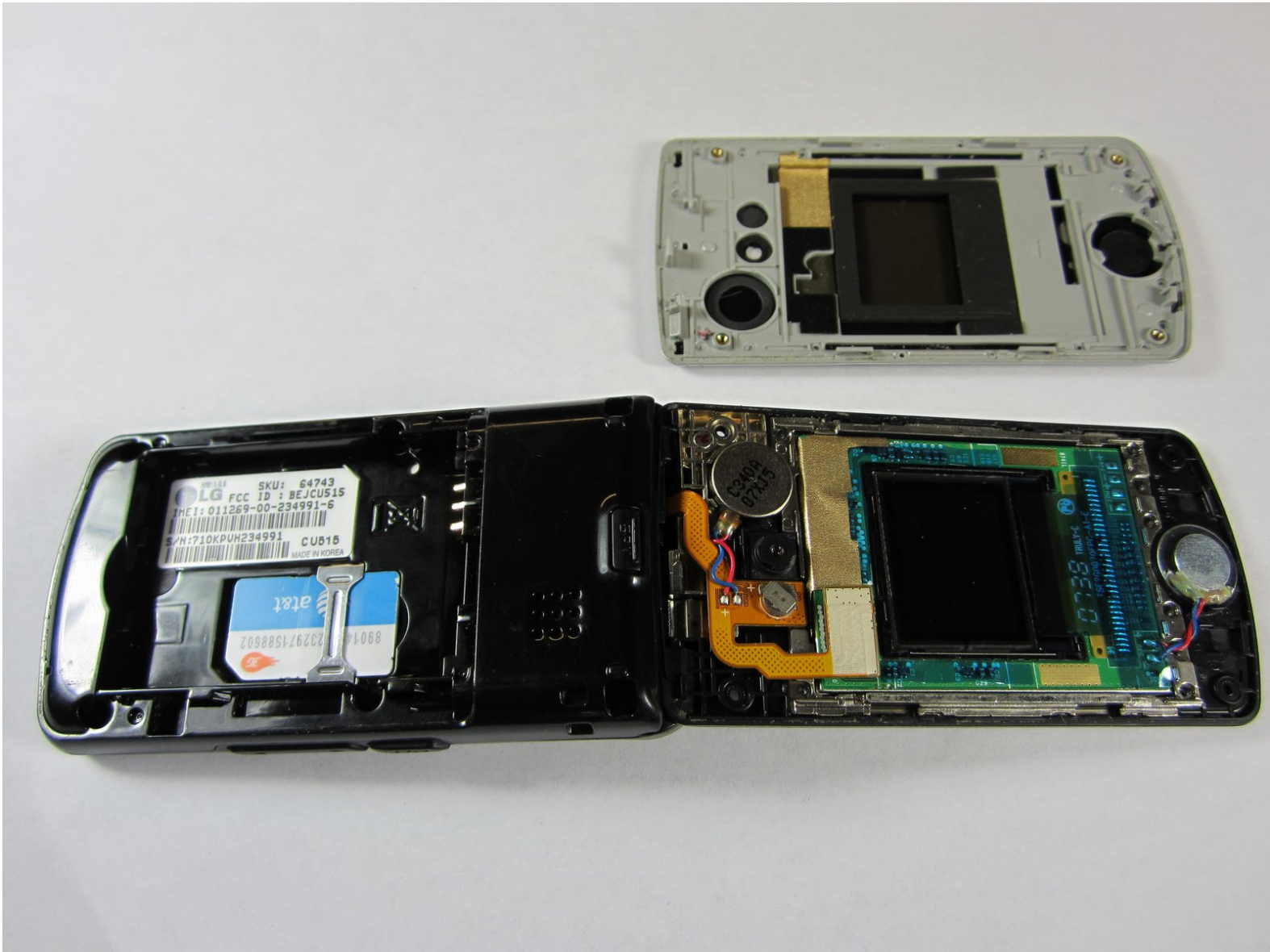




LG CU515 Front Housing Replacement

A short guide showing how to replace the front housing of your LG CU515 phone.

Written By: Zack Mintzer



INTRODUCTION

The front housing is the glossy front cover of the phone which can get scratched easily.



TOOLS:

- [Phillips #00 Screwdriver](#) (1)
 - [iFixit Opening Tool](#) (1)
-

Step 1 — Front Housing



- Use an opening tool to remove the thin silver part covering the speaker at the top of the phone.

Step 2



- Remove the four 3 mm Phillips #00 screws.

Step 3



- Insert the opening tool in the seam between the silver and black parts of the phone casing.
- Remove the front housing by running the opening tool around the perimeter of the phone.

To reassemble your device, follow these instructions in reverse order.