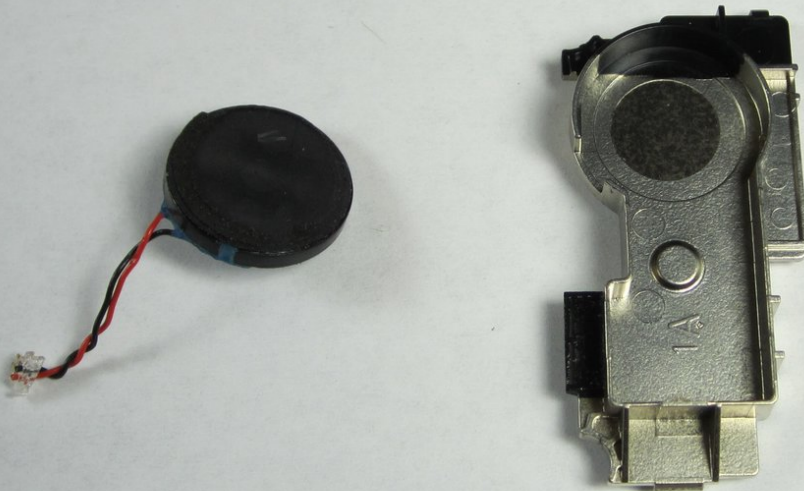




# LG CU515 Speaker Replacement

This guide will show how to replace the speaker for the LG CU515.

Written By: Zack Mintzer



---

# INTRODUCTION

Restore sound to your phone by replacng the speaker.

---



## TOOLS:

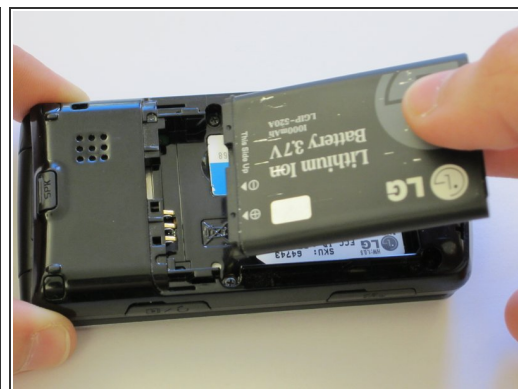
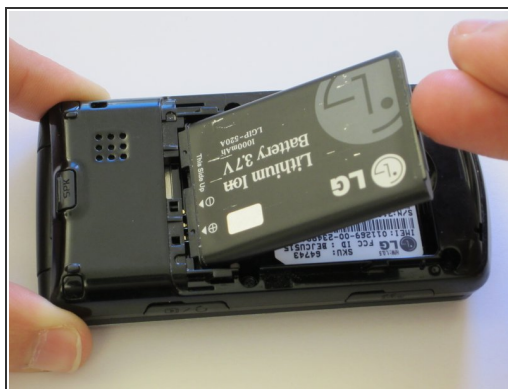
- [Phillips #00 Screwdriver](#) (1)
  - [iFixit Opening Tools](#) (1)
  - [Spudger](#) (1)
-

## Step 1 — Battery



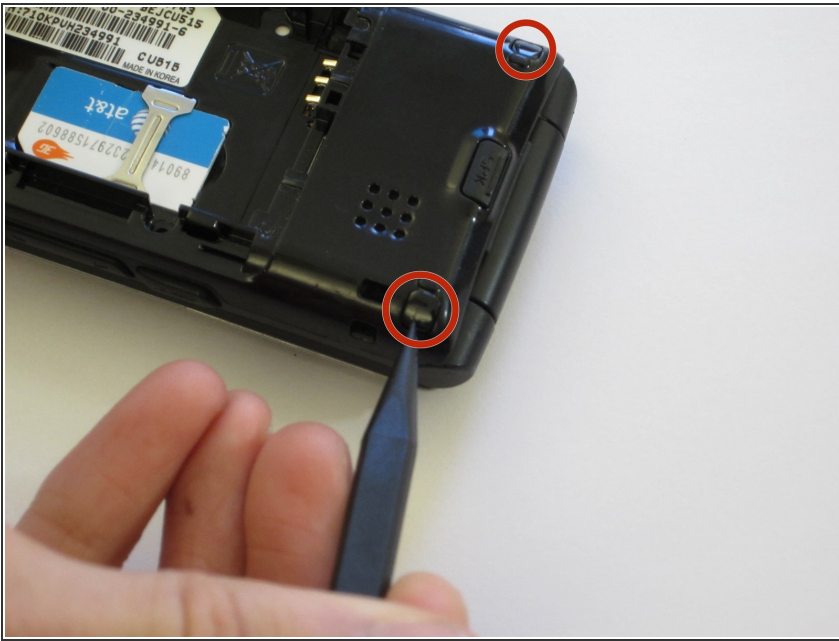
- Use your thumb to press down and slide off the back cover of the phone.

## Step 2



- Take out the battery by levering it out towards the bottom of the phone.

## Step 3 — Motherboard



- Push the spudger between each of the two rubber cushions and the body of the phone. Then turn the spudger to pop each cushion out.

## Step 4



- Remove six 3.0 mm Phillips #00 screws from the back of the phone.

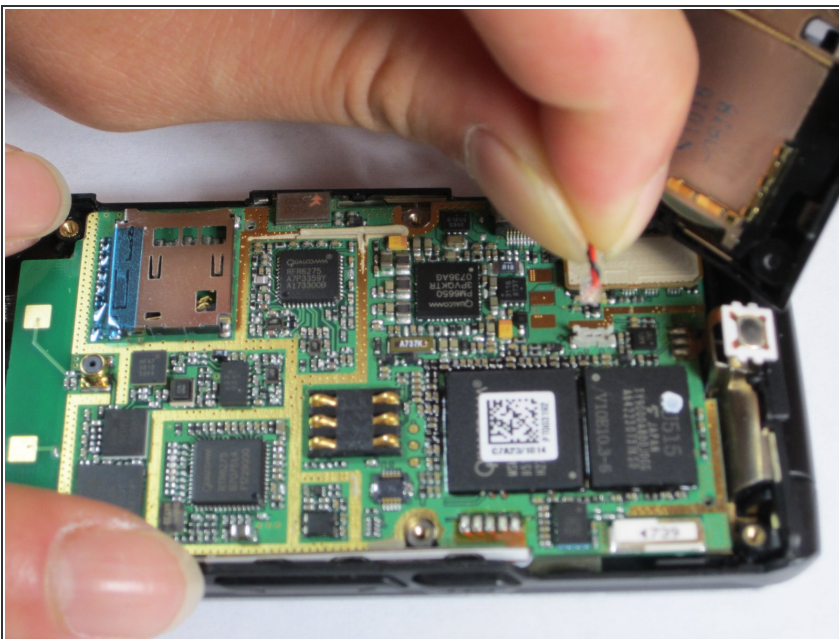


## Step 5



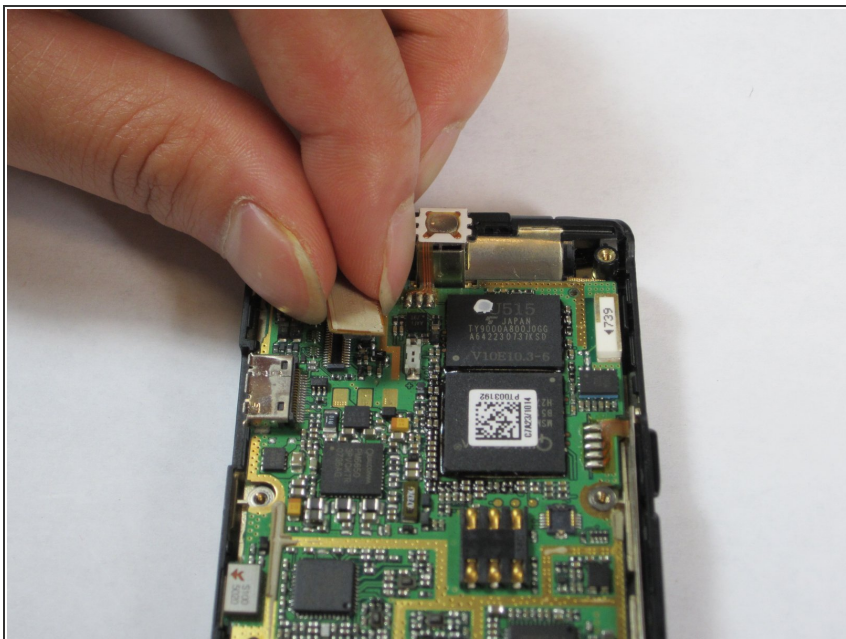
- Push the spudger into the crack separating the two pieces of the phone.
- Then use the plastic opening tools to pry the back off by separating the two pieces of the phone.
- Repeat as necessary around the perimeter of the phone until the casing pops off. Use force as necessary without breaking the cover.
- The back is attached to the motherboard by a wire, so don't pull the back casing off just yet.

## Step 6



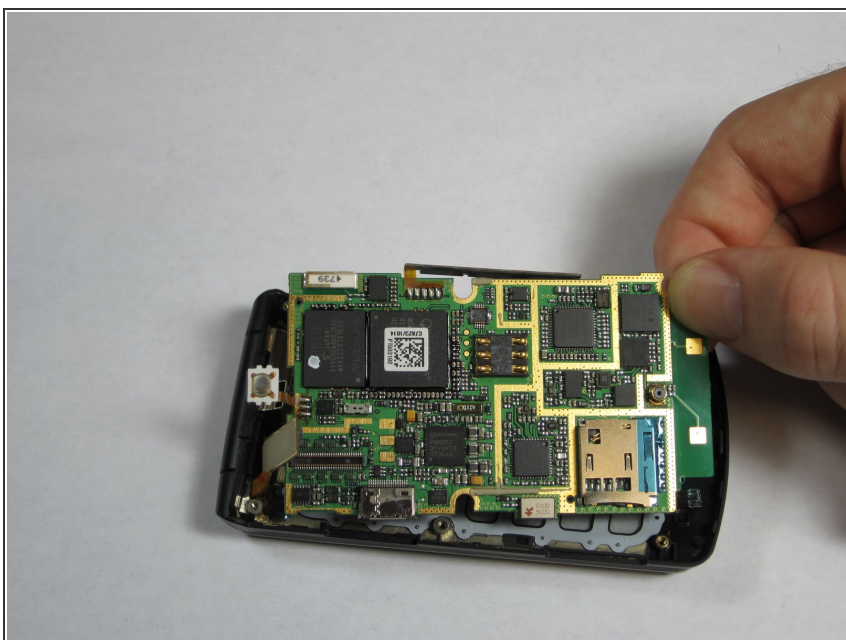
- Gently pull the wire up from the motherboard, separating the back of the phone and the motherboard.

## Step 7



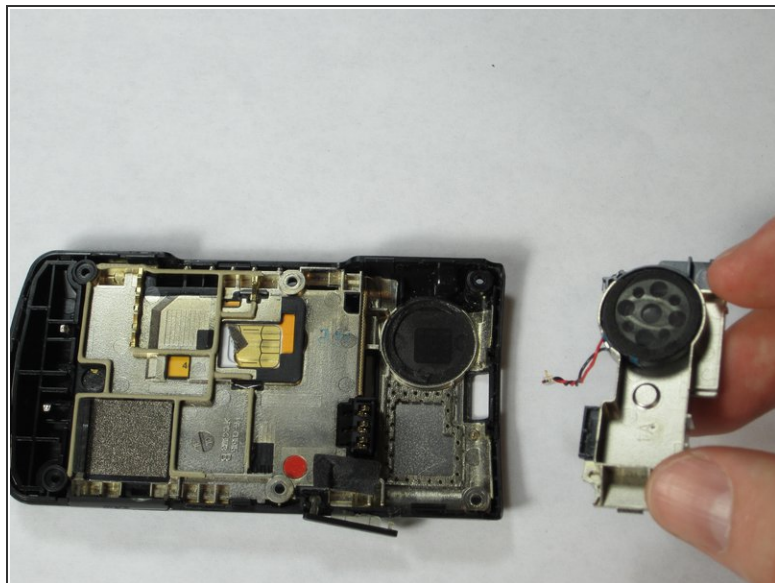
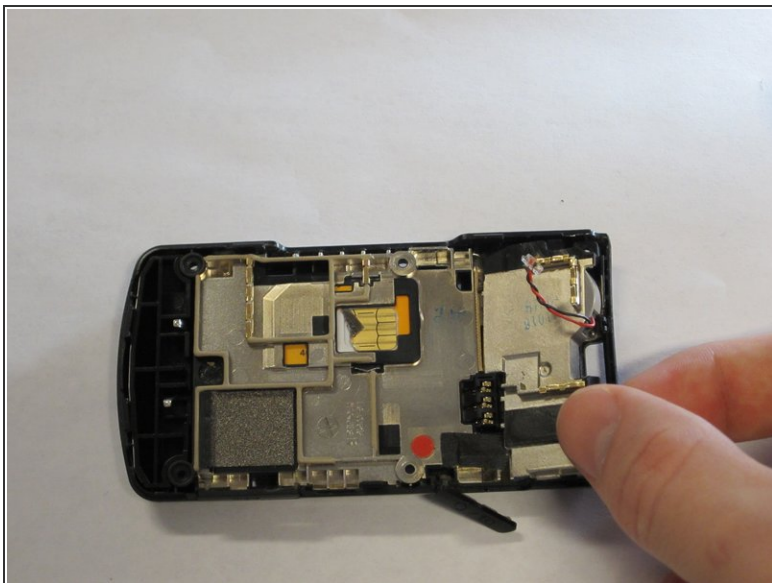
- Remove the plastic tab connecting the screen to the motherboard by pulling the tab up from the board.

## Step 8



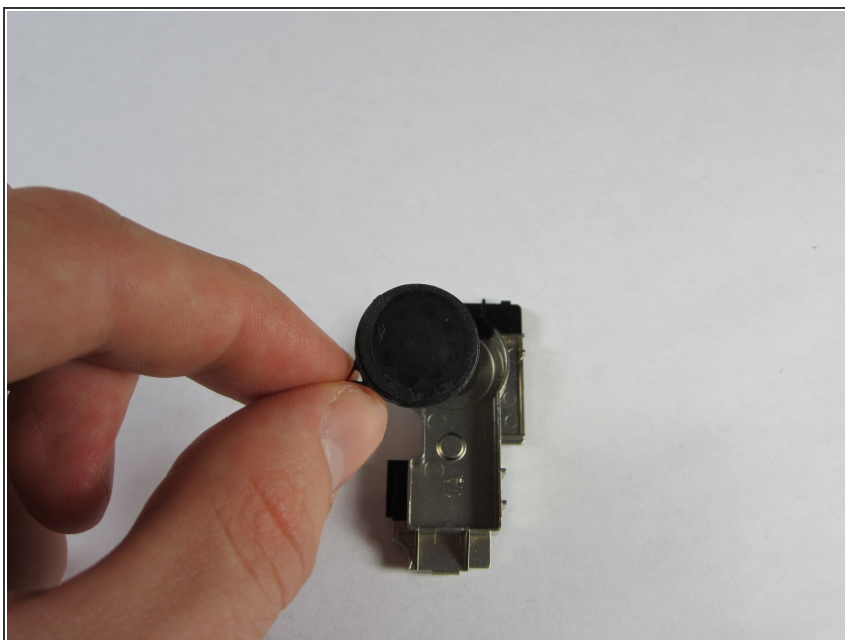
- Gently grasp one of the corners of the motherboard and simply lift it straight up out of the phone casing.
- Replace the motherboard with a new one.

## Step 9 — Speaker



- Remove the speaker component from the back of the phone by lifting up the top part to a 45 degree angle and pulling it out.

## Step 10



- Pull speaker out of the component by grabbing the wire attached to it in order to replace it.

To reassemble your device, follow these instructions in reverse order.

This document was generated on 2020-11-28 02:55:13 AM (MST).

