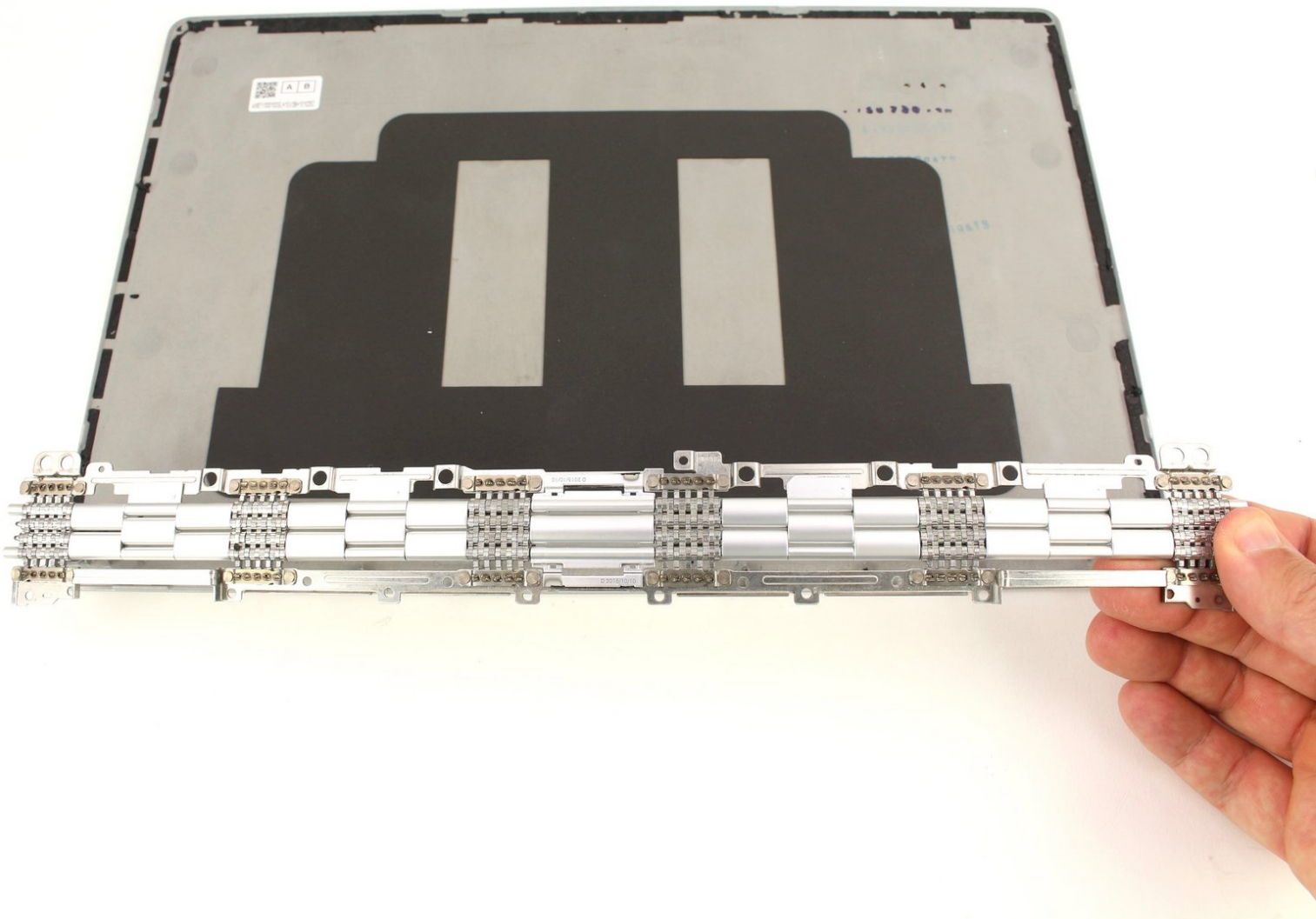




# Lenovo Yoga 900-13ISK Hinge Assembly Replacement

This guide will demonstrate the process of...

Written By: Austin Blakely



## INTRODUCTION

This guide will demonstrate the process of removing the hinge assembly of the 13 inch Lenovo Yoga 900. The hinge of this 2-in-1 convertible laptop rotates 360° around the base, allowing it to be used as a tablet as well. The hinge for the Yoga 900-13ISK is a single assembly that stretches across the entire edge of the laptop, so it will likely fail as a single unit and must be replaced as a full unit. If your hinge is failing to close or open, is visibly broken, or becomes too loose to hold the screen in a desired position, a replacement is in order to fix the problem.

To access the upper hinge screws, the display assembly will have to be opened, requiring the adhesive holding it together to be cut away. In many cases, the old adhesive can be reused by sticking the two panels back together. However, you may want to purchase some replacement adhesive to ensure that your display sticks back together completely. If you are using fresh adhesive, be sure to completely clean any old adhesive from both sides of the assembly before applying the new adhesive.

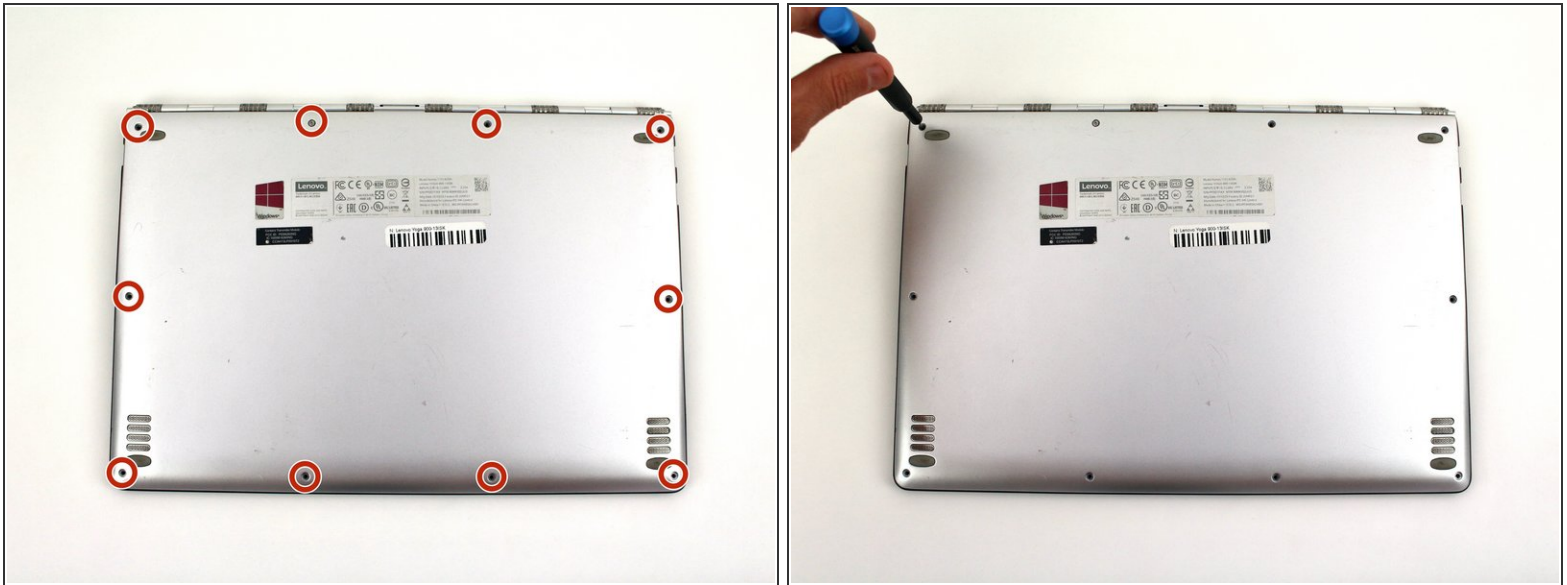
Be sure to unplug and completely turn off your device before you start working.



### TOOLS:

- [iFixit Opening Picks set of 6](#) (1)
  - [iOpener](#) (1)
  - [T5 Torx Screwdriver](#) (1)
  - [Spudger](#) (1)
  - [Phillips #00 Screwdriver](#) (1)
-

## Step 1 — Back Cover



- Using a T5 Torx screwdriver, remove the ten 5.5 mm screws from the back case of the laptop.

## Step 2



- Use a spudger to pry open the back case at the hinges of the laptop.
  - ⓘ There are plastic clips around the perimeter of the case holding down the back cover. These will need to be popped off as the cover is removed.
- Use your fingers to completely pop off the back cover.



## Step 3 — Battery



- Remove the five 3.6 mm screws from the battery with a Phillips #00 screwdriver.

## Step 4



- Grab the bottom corners of the battery and gently pull the battery until the cable disconnects from the connector on the motherboard.

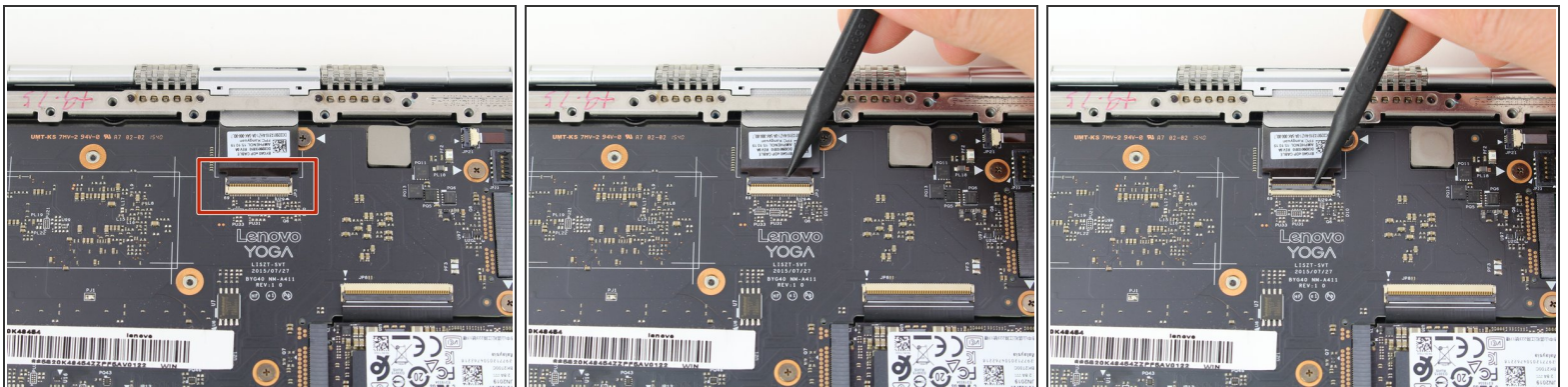
- ☑ While reassembling, use a plastic spudger to push the battery cable into the connector on the underside of the motherboard. This will be easier to do before the screws are replaced.

## Step 5 — Display Assembly



- Remove the ten 3.6 mm screws from the hinge bracket with a Phillips #00 screwdriver.

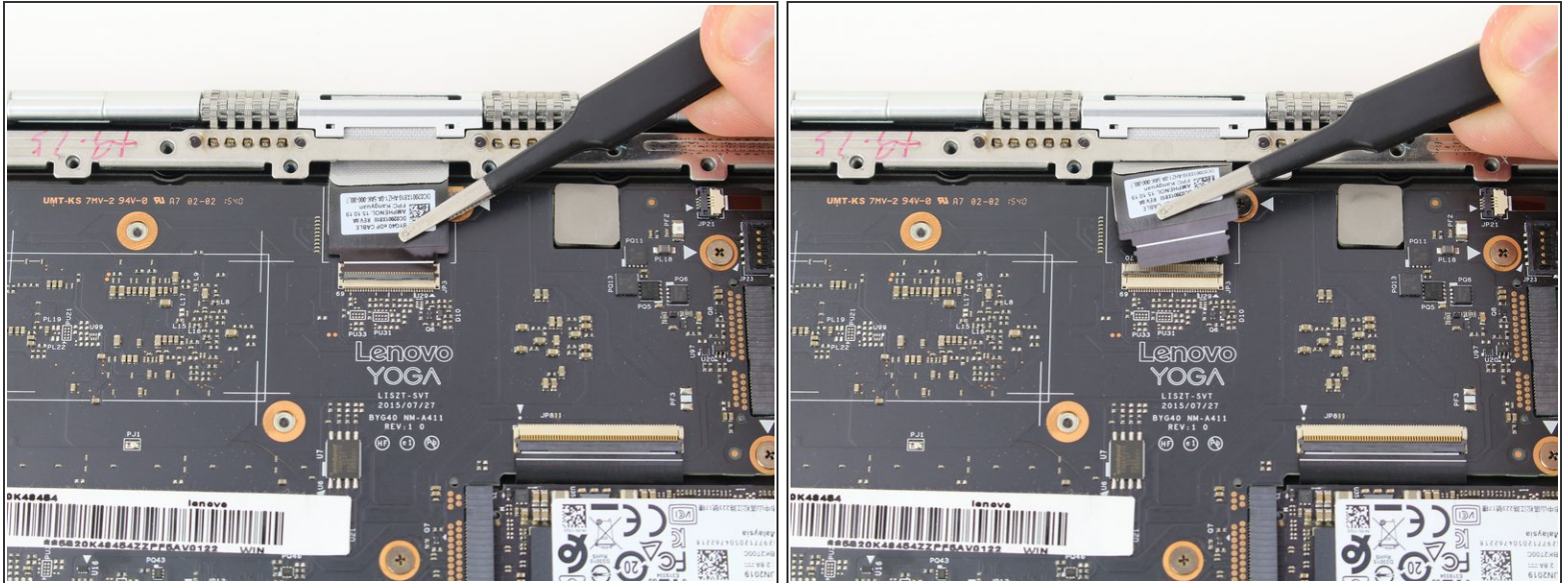
## Step 6



- Use the pointed end of a spudger to lift the hinged locking flap of the display [ZIF connector](#).



## Step 7



- Pull out the display cable with a pair of blunt nose tweezers.

## Step 8



- Open the laptop to a 45° angle, then close the laptop.  
① This raises the hinge, which will stay open as the bottom case is lowered.

## Step 9



- Slide the bottom case away from the hinge.
- ⓘ If the hinge is catching on the case, either go back to the previous step and open the case a bit more, or manually open the hinge with your fingers.

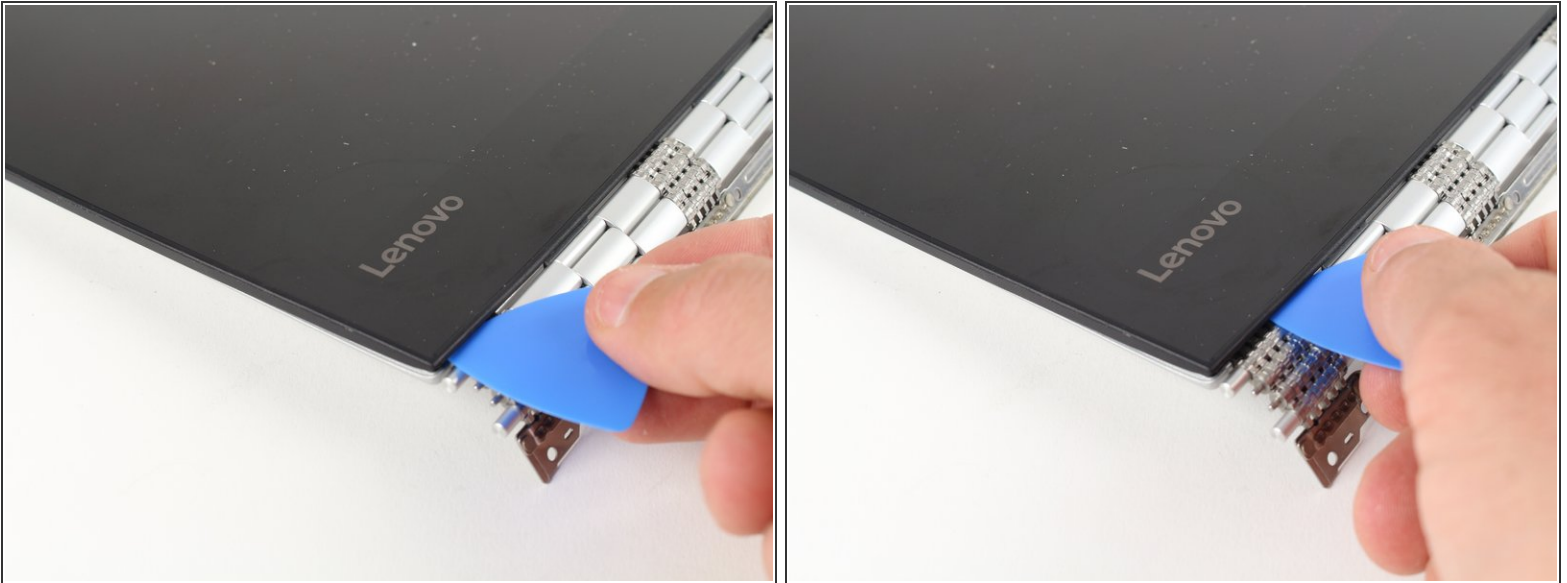
## Step 10 — Display Opening Prereq



- Apply heat along the bottom and left edges of the screen, either with a heat gun or iOpener.
- ⓘ Check out our [iOpener Instructions](#) if you need help!



## Step 11



- Insert an opening pick into the corner of the screen and slide it around slightly to create an opening.

## Step 12



- Insert a second opening pick and slide it along the side of the display, cutting away the adhesive.

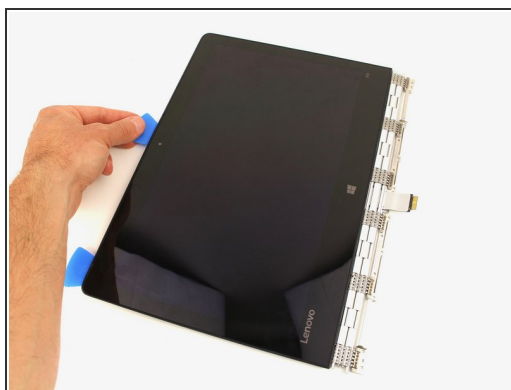


## Step 13



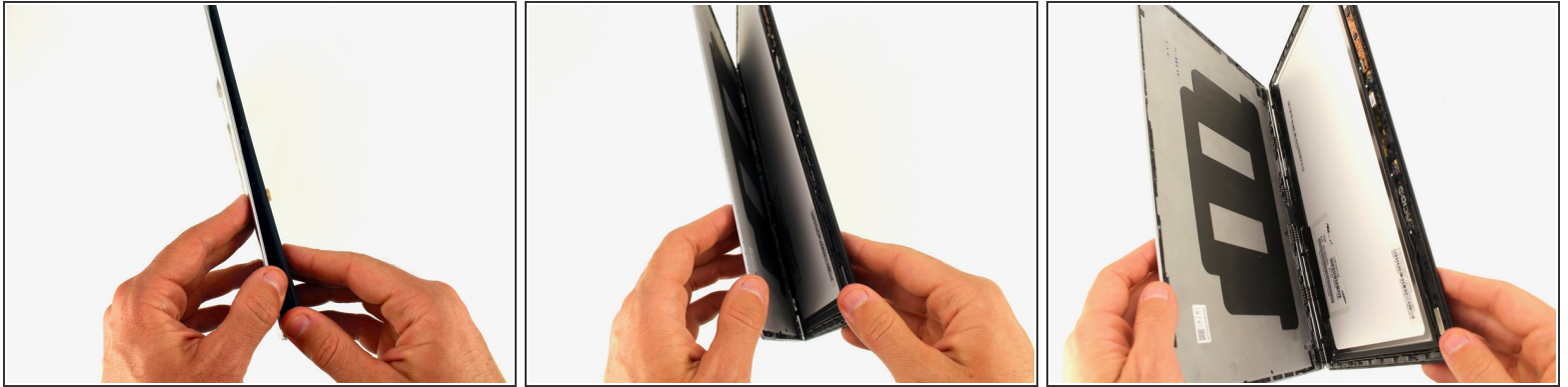
- Use a heat gun or iOpener to apply heat to the top and side edge that have not yet been opened.

## Step 14



- Continue cutting away the adhesive on the top and side edges of the display.

## Step 15



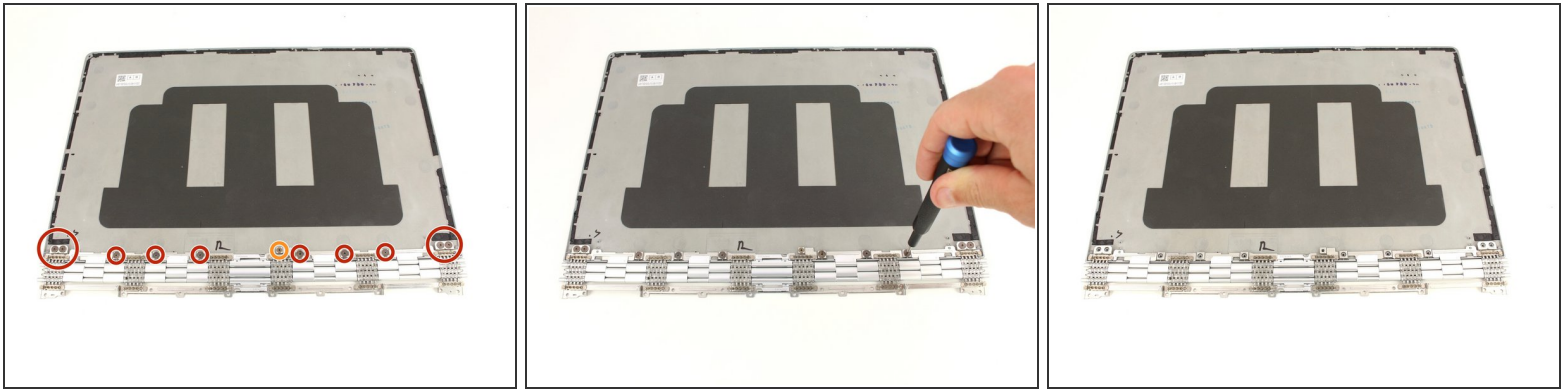
- Open the display casing along the top edge.

## Step 16



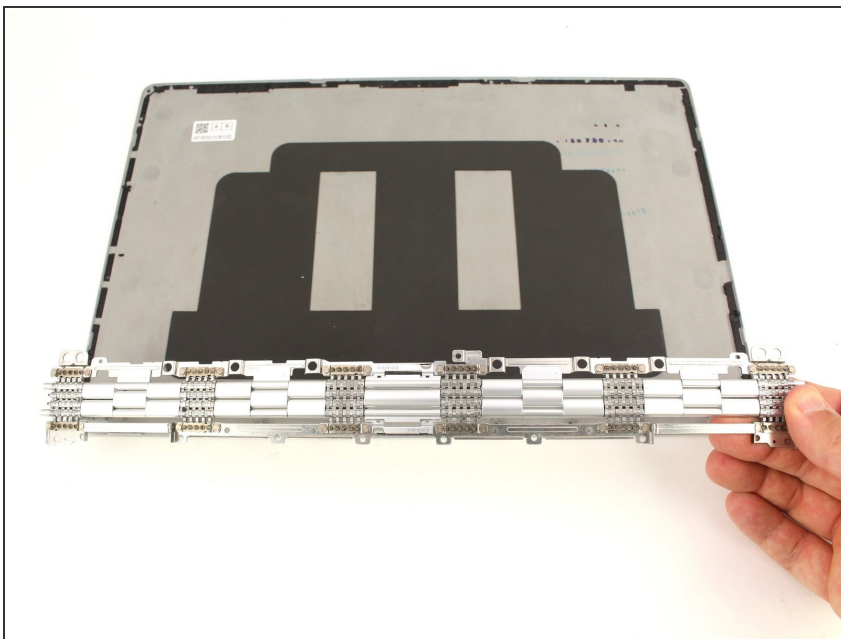
- Pull the display cable out from the hinge mechanism.

## Step 17 — Hinge Assembly



- Remove the ten 2.3 mm screws from the hinge assembly with a Phillips #00 screwdriver.
- Remove the single 2.2 mm screw from the hinge assembly with a Phillips #00 screwdriver.
- ☑ This screw has a smaller head from the rest if you have trouble distinguishing it from the rest during reassembly.

## Step 18



- Lift off the hinge assembly.

To reassemble your device, follow these instructions in reverse order.