



Dell Inspiron 5570 M.2 SSD Replacement

Written By: Tommy10606





TOOLS:

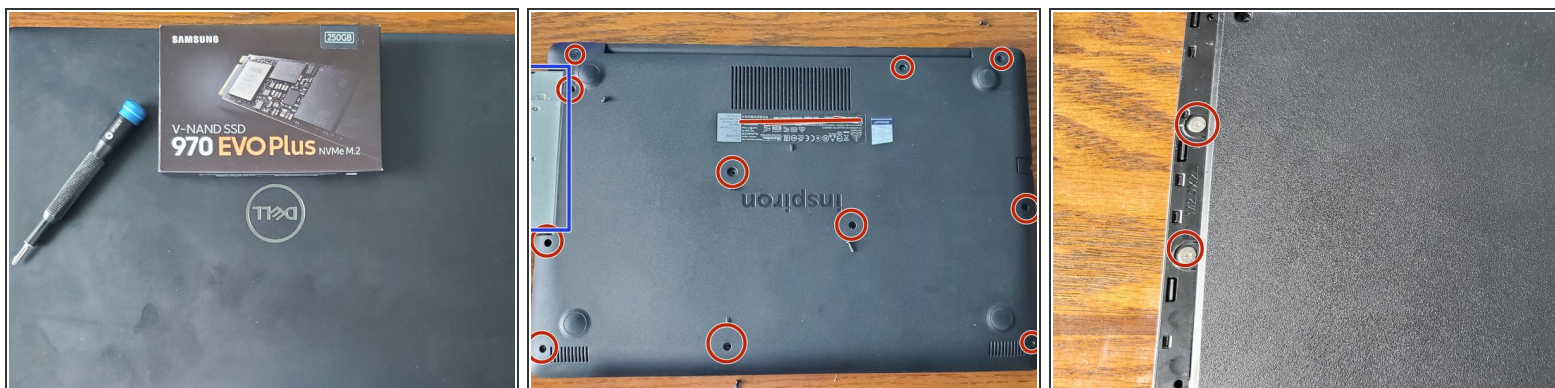
- [Phillips #00 Screwdriver \(1\)](#)
- [iFixit Opening Picks \(Set of 6\) \(1\)](#)



PARTS:

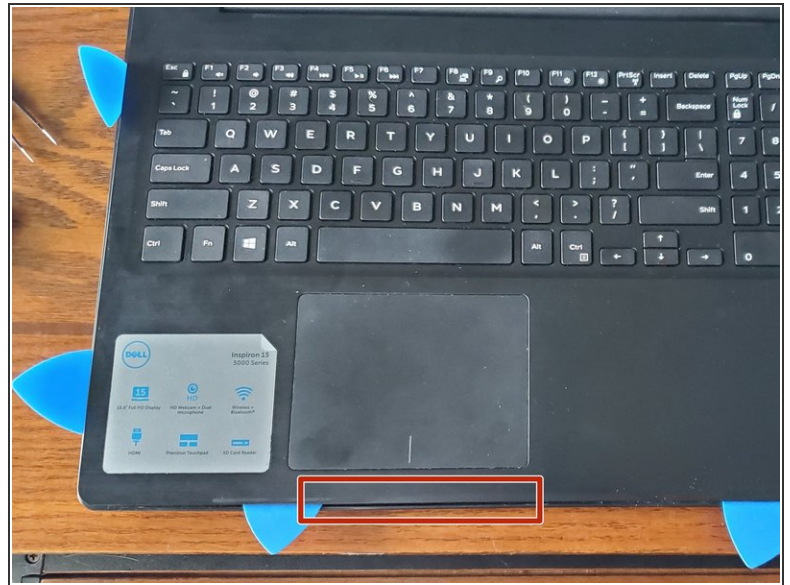
- [Crucial P3 NVMe PCIe M.2 2280SS SSD - solid performance, switching from HDD or SATA to NVMe™ \(1\)](#)
- [Crucial P3 Plus NVMe PCIe M.2 2280SS SSD - fast Gen4 NVMe™ storage for data-intensive applications \(1\)](#)
- [Crucial P5 Plus NVMe PCIe M.2 2280SS SSD - professionals, creatives, and hardcore gamers \(1\)](#)

Step 1 — Un-screwing the bottom cover.



- i** This laptop can be completely taken apart using only a Philips head screwdriver. Not a lot of force is needed. From now on, when I say screwdriver, I am referring to a Philips head.
- There are 13 screws on the backside. Using a screwdriver, you can remove 11 of them, marked with a red circle.
 - The DVD R/W Drive is marked with a blue rectangle. Removing it will reveal 2 more silver screws, marked with red circles. I recommend pushing down a little bit when trying to unscrew them due to their small and thin build.

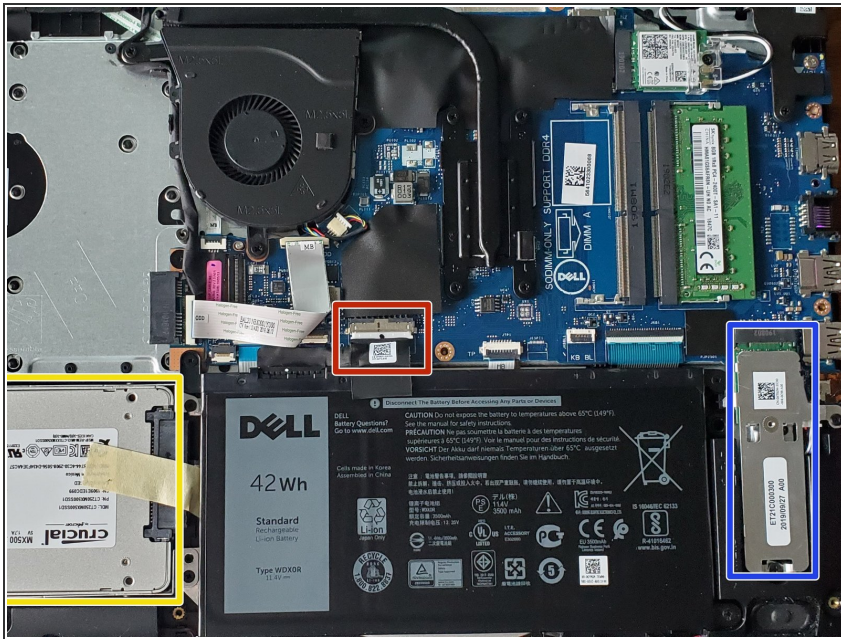
Step 2 — Separating the bottom cover and palm rest.



⚠ Go slow or you will break a tab!

- Using guitar picks or some opening pics, slowly and carefully slide one between the 2 layers of the laptop. There is the bottom cover which curves to the top and then the palm rest which meets it at the very edge. I recommend slowly and carefully sliding a pic between then where the palm rest dips under the trackpad, marked with a red rectangle
- Be careful to not go too deep and be aware of the ports on the laptop. Eventually, you will be able to open the laptop once you separate enough of the bottom cover from the palm rest.

Step 3 — Locating the M.2 SSD.



⚠ It is recommended that you disconnect the battery. Just pull on the tab towards you without lifting up. This is marked in red.

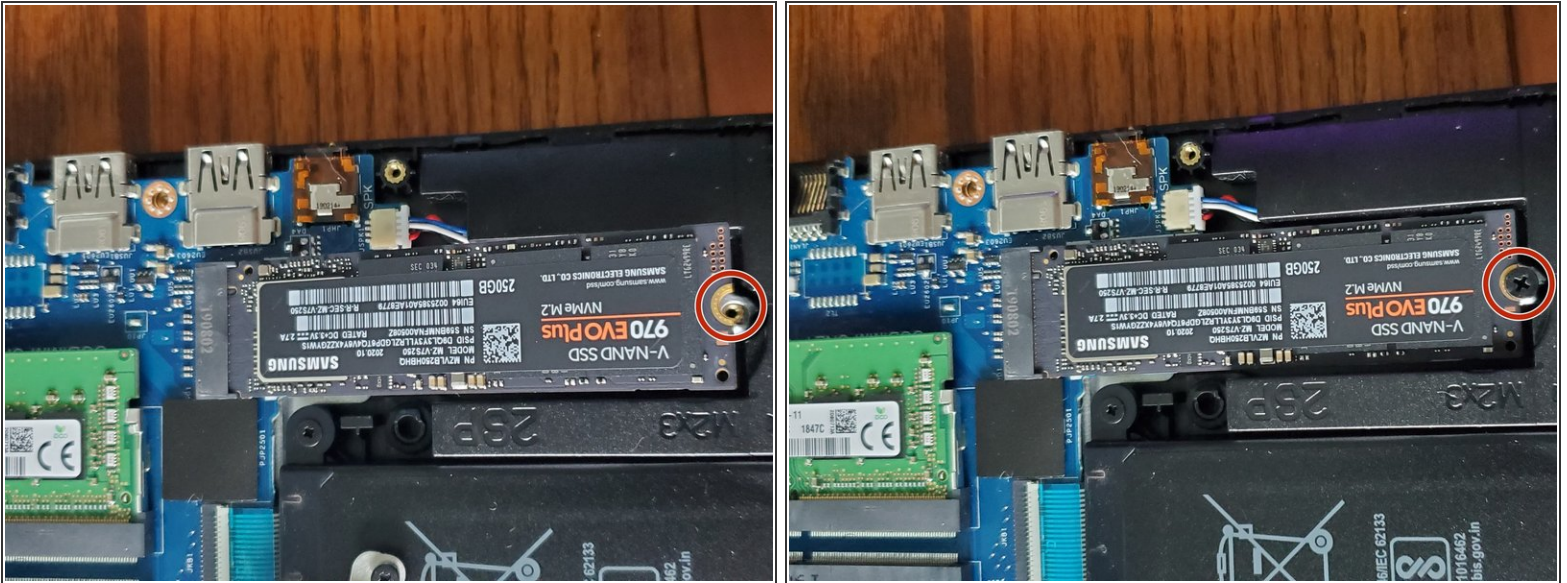
- M.2 SSD - We will be replacing this drive in this guide.
- SATA Drive - Check another guide for instructions on how to install or replace the drive here.

Step 4 — Removing the old M.2 SSD



- There are 2 screws needed to be removed, marked in red. Using a screw driver, remove the bottom screw and unscrew the side one. The side screw is self retaining.
- Once you have unscrewed both screws and the SSD lifts up at about a 15 degree angle, slide the SSD out. You can either grab it by the SSD or by the holster it is in. The holster might slide off of the SSD if you do not grab the SSD as well.

Step 5



- When you are ready, insert your new SSD at a 15ish degree angle into the slot.
- Once inserted, carefully push down on the SSD and screw it in with the screw that you removed earlier.
- You will not use the SSD holster that you removed unless you have a SSD that fits in it. The SSD size that you would use that holster with would be 30mm in length.

To reassemble your device, follow these instructions in reverse order.