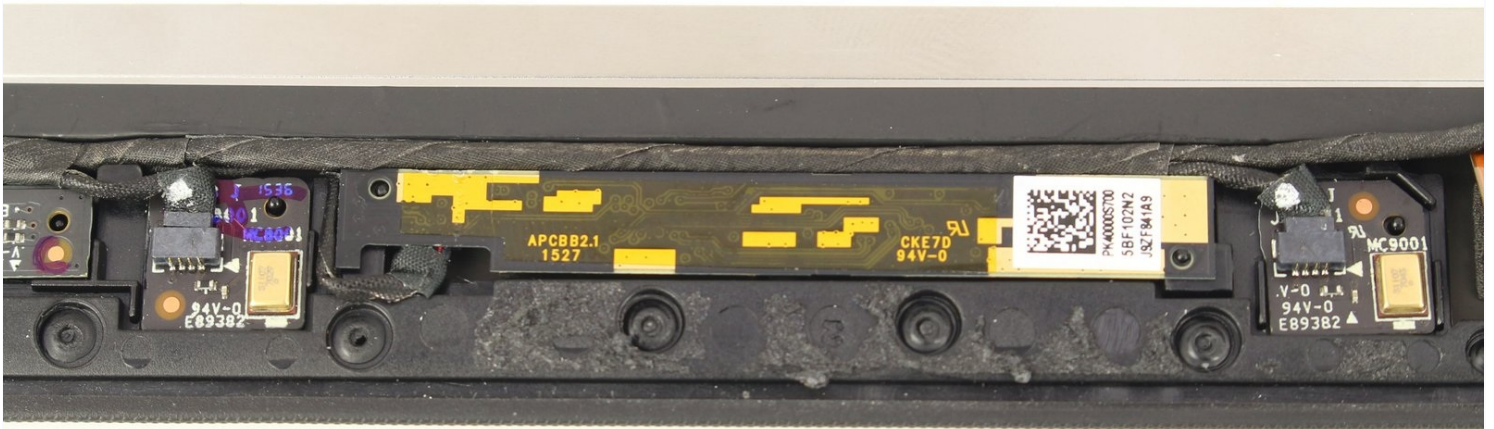




Lenovo Yoga 900-13ISK Webcam Replacement

This guide will show you how to replace the...

Written By: Austin Blakely



INTRODUCTION

This guide will show you how to replace the webcam in your Lenovo Yoga 900-13ISK. The webcam allows the user to engage in video calls, so it's especially essential in this day and age. The webcam will typically fail completely, throwing up an error when the computer tries to use it or displaying a black screen where webcam video feed should be displayed. However, it's also possible for the webcam to display glitchy or blurry video, in which case a webcam replacement will also need to be performed.

Be sure to restart the computer and try any known software fixes to try to get your webcam working again before diving in for a replacement.

You also may want to purchase replacement adhesive for the display assembly, as your display may not stick together perfectly once the old adhesive has been cut away. Be sure to remove and clean any old adhesive before applying the fresh adhesive.

Be sure to unplug and completely turn off your device before you start working.

TOOLS:

[T5 Torx Screwdriver](#) (1)

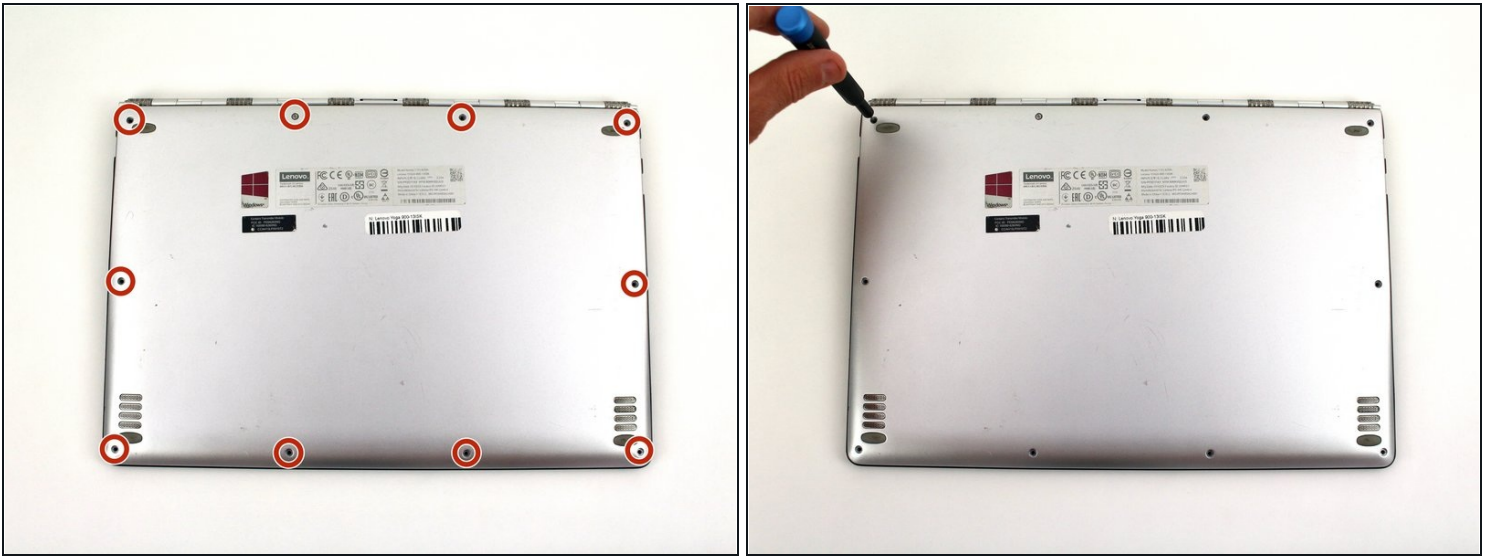
[Spudger](#) (1)

[Phillips #00 Screwdriver](#) (1)

[iFixit Opening Picks \(Set of 6\)](#) (1)

[iOpener](#) (1)

Step 1 — Back Cover



- Using a T5 Torx screwdriver, remove the ten 5.5 mm screws from the back case of the laptop.

Step 2



- Use a spudger to pry open the back case at the hinges of the laptop.
 - ① There are plastic clips around the perimeter of the case holding down the back cover. These will need to be popped off as the cover is removed.
- Use your fingers to completely pop off the back cover.

Step 3 — Battery



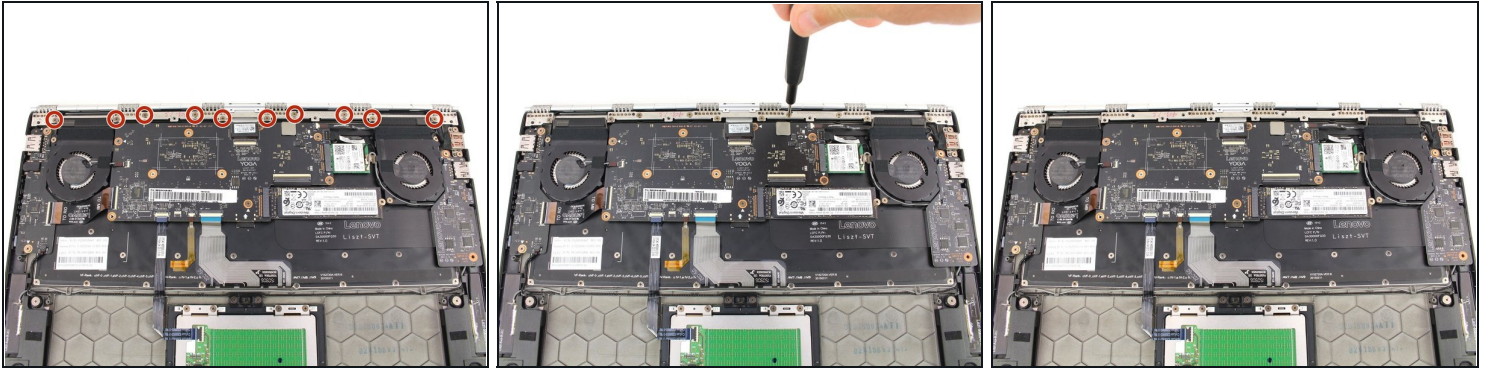
- Remove the five 3.6 mm screws from the battery with a Phillips #00 screwdriver.

Step 4



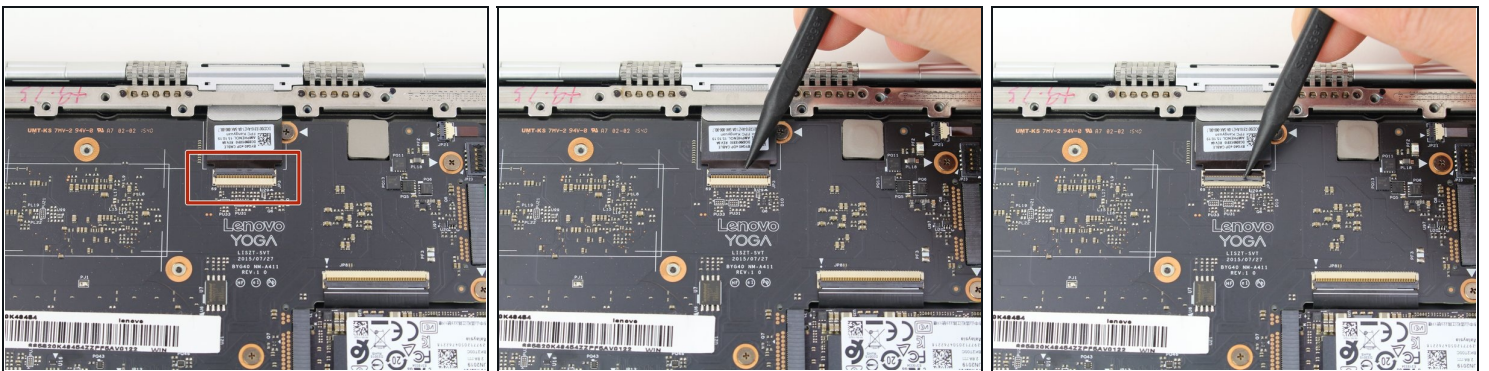
- Grab the bottom corners of the battery and gently pull the battery until the cable disconnects from the connector on the motherboard.
- ☒ While reassembling, use a plastic spudger to push the battery cable into the connector on the underside of the motherboard. This will be easier to do before the screws are replaced.

Step 5 — Display Assembly



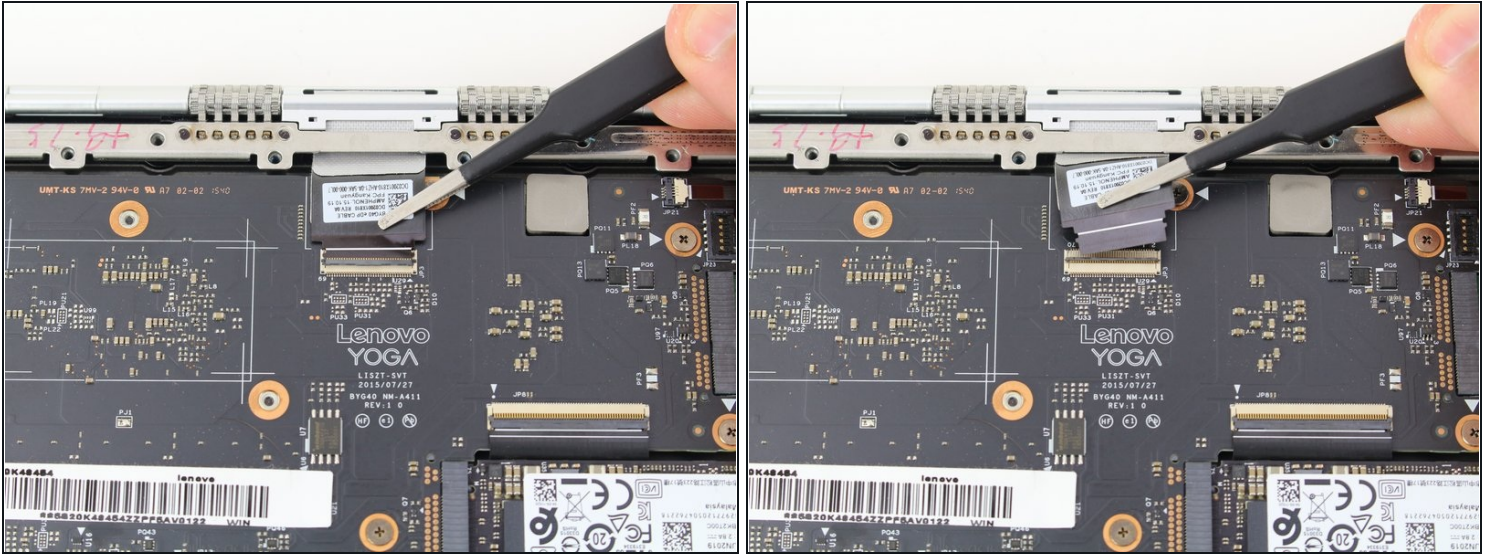
- Remove the ten 3.6 mm screws from the hinge bracket with a Phillips #00 screwdriver.

Step 6



- Use the pointed end of a spudger to lift the hinged locking flap of the display [ZIF connector](#).

Step 7



- Pull out the display cable with a pair of blunt nose [tweezers](#).

Step 8



- Open the laptop to a 45° angle, then close the laptop.
 - ❗ This raises the hinge, which will stay open as the bottom case is lowered.

Step 9



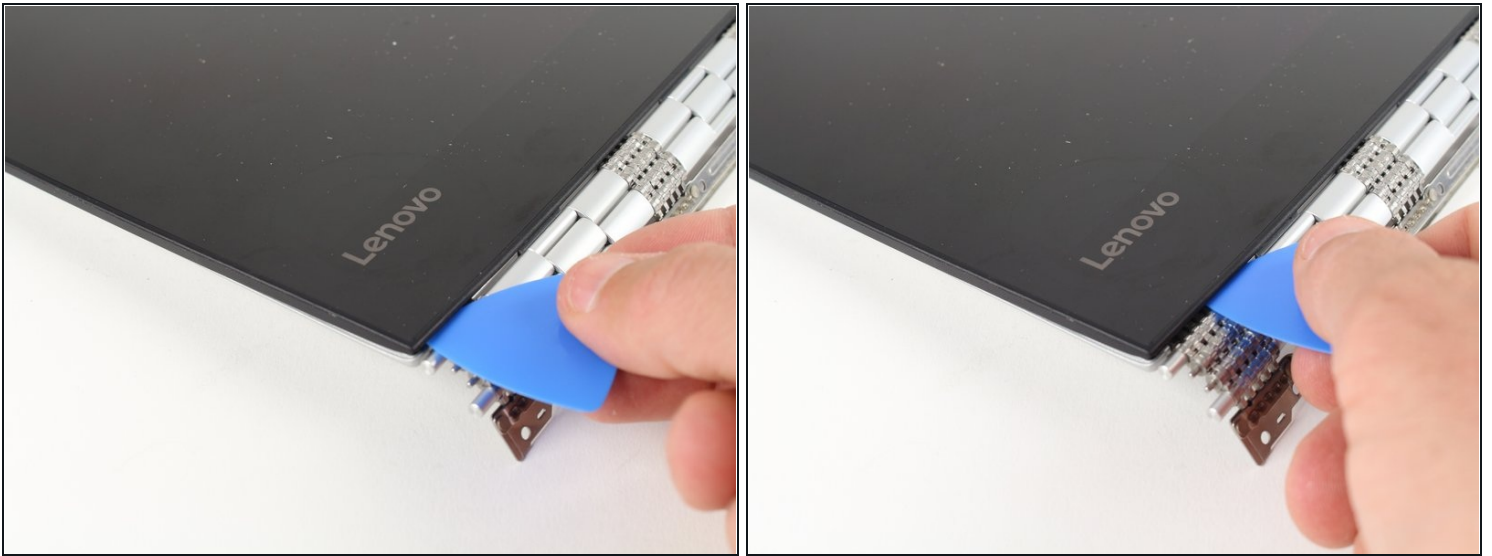
- Slide the bottom case away from the hinge.
- ① If the hinge is catching on the case, either go back to the previous step and open the case a bit more, or manually open the hinge with your fingers.

Step 10 — Display Opening Prereq



- Apply heat along the bottom and left edges of the screen, either with a heat gun or iOpener.
- ① Check out our [iOpener Instructions](#) if you need help!

Step 11



- Insert an opening pick into the corner of the screen and slide it around slightly to create an opening.

Step 12



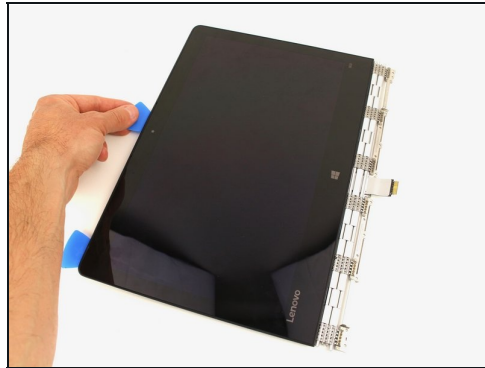
- Insert a second opening pick and slide it along the side of the display, cutting away the adhesive.

Step 13



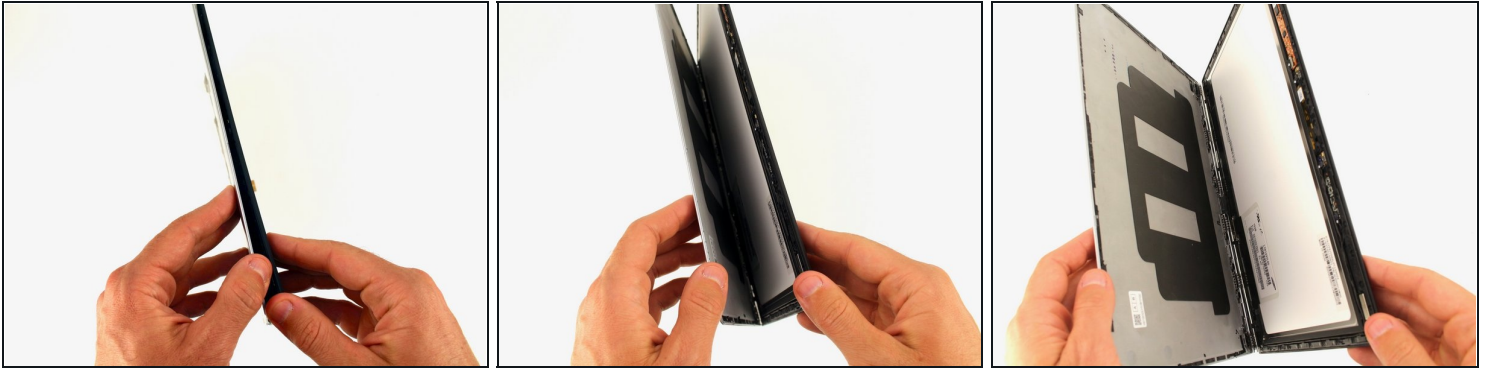
- Use a heat gun or iOpener to apply heat to the top and side edge that have not yet been opened.

Step 14



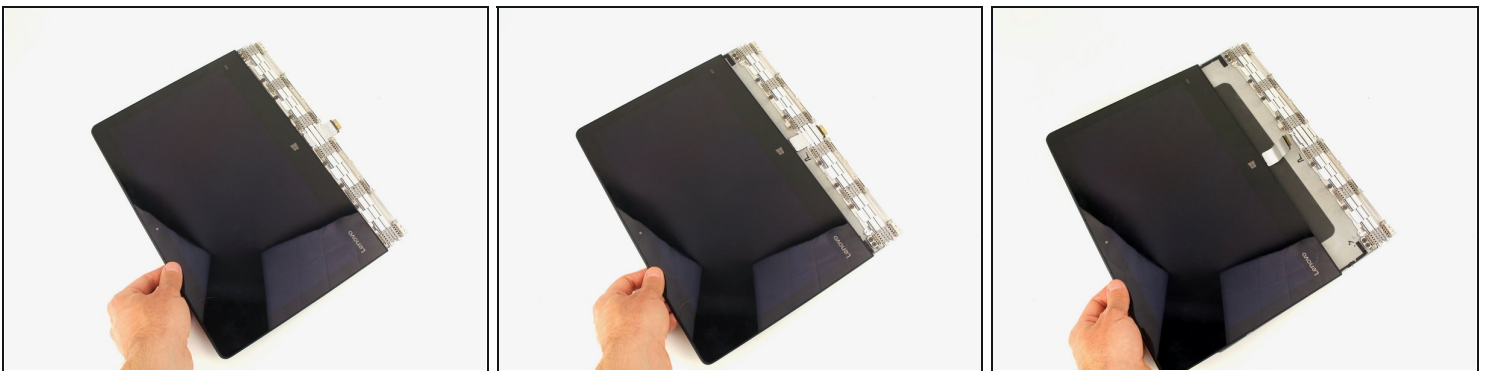
- Continue cutting away the adhesive on the top and side edges of the display.

Step 15



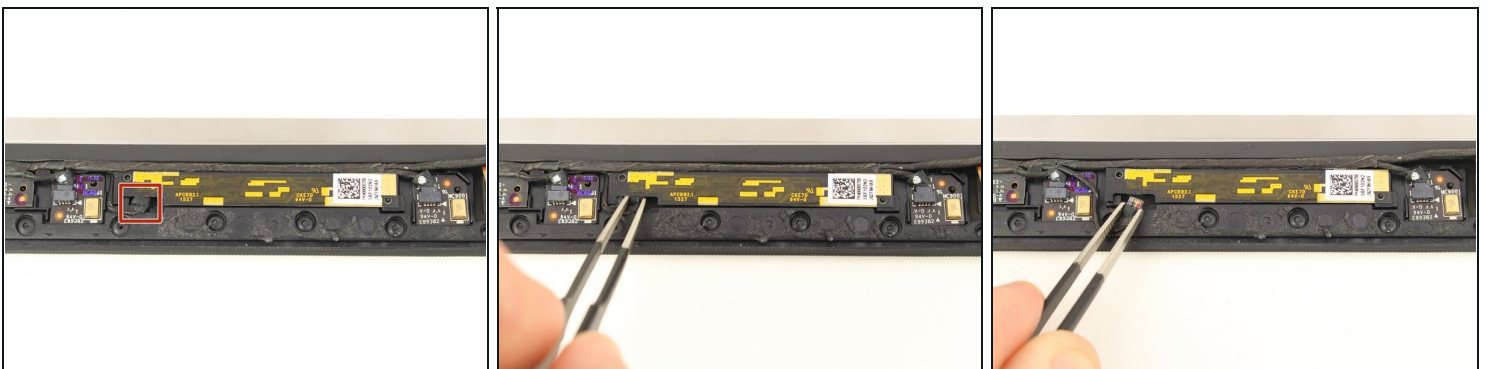
- Open the display casing along the top edge.

Step 16



- Pull the display cable out from the hinge mechanism.

Step 17 — Webcam



- Gently remove the cable from the yellow-accented webcam board on the top of the display panel with a pair of blunt nose [tweezers](#).

Step 18



- Gently lift up the webcam board with a spudger.

⚠ There will be strong adhesive holding the board in place, so be careful not to bend or break the delicate board.

To reassemble your device, follow these instructions in reverse order.