



Lenovo Yoga 900-13ISK Display Assembly Replacement

This guide will show you how to replace the...

Written By: Austin Blakely



INTRODUCTION

This guide will show you how to replace the display assembly in the Lenovo Yoga 900-13ISK. The display assembly contains the display, touch control board, digitizer, and webcam. If you are having issues with any of these components, such as a flickering, glitchy, or cracked display, a loss of touchscreen functionality, or a broken webcam, replacing the display assembly should alleviate any and all of these issues.

Note that the display assembly can be further disassembled to replace the display, screen, digitizer, and touch control board as a single unit. However, this does require dealing with adhesive and some very delicate webcam and microphone boards. If you're up to the challenge, or if your display replacement unit did not include the back panel and hinge, you can see [how to replace the display here](#).

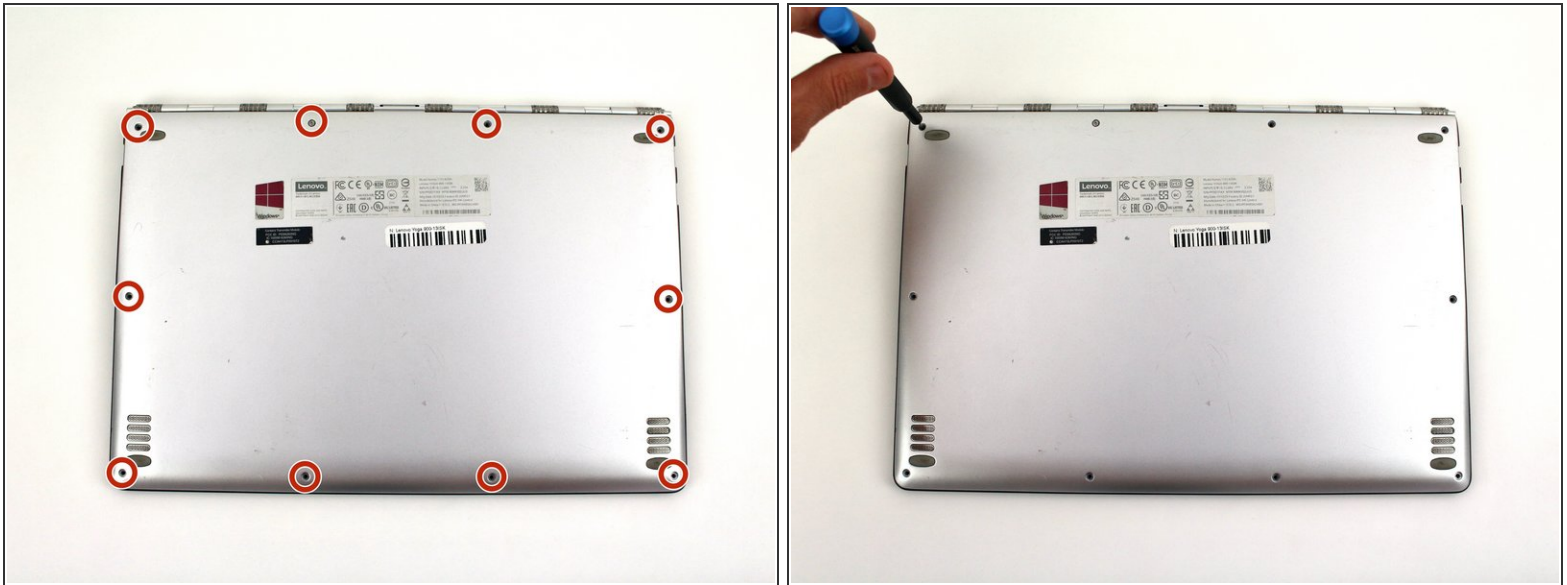
Be sure to unplug and completely turn off your device before you start working.



TOOLS:

- [T5 Torx Screwdriver](#) (1)
 - [Spudger](#) (1)
 - [Phillips #00 Screwdriver](#) (1)
-

Step 1 — Back Cover



- Using a T5 Torx screwdriver, remove the ten 5.5 mm screws from the back case of the laptop.

Step 2



- Use a spudger to pry open the back case at the hinges of the laptop.
 - ❗ There are plastic clips around the perimeter of the case holding down the back cover. These will need to be popped off as the cover is removed.
- Use your fingers to completely pop off the back cover.

Step 3 — Battery



- Remove the five 3.6 mm screws from the battery with a Phillips #00 screwdriver.

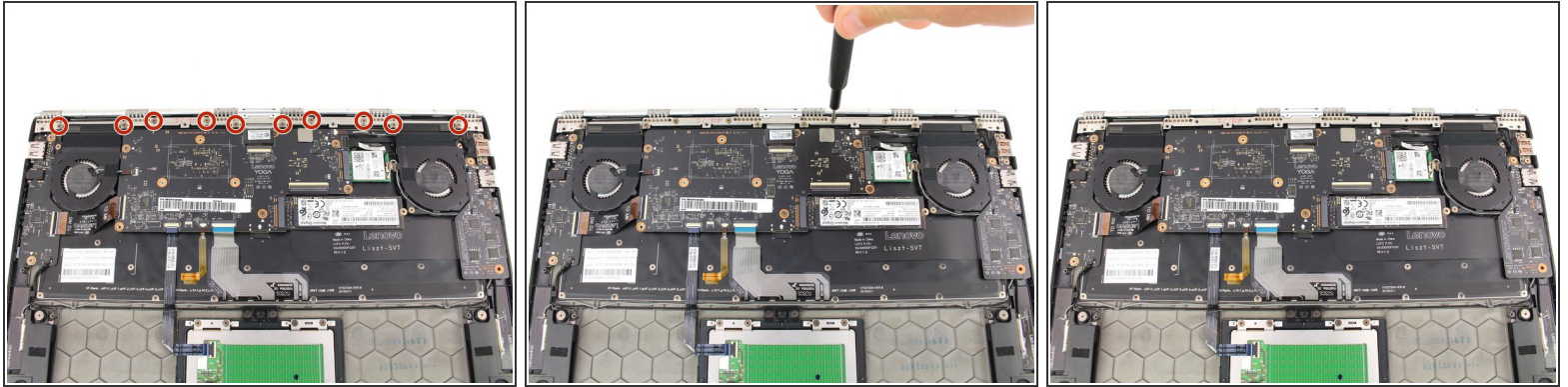
Step 4



- Grab the bottom corners of the battery and gently pull the battery until the cable disconnects from the connector on the motherboard.

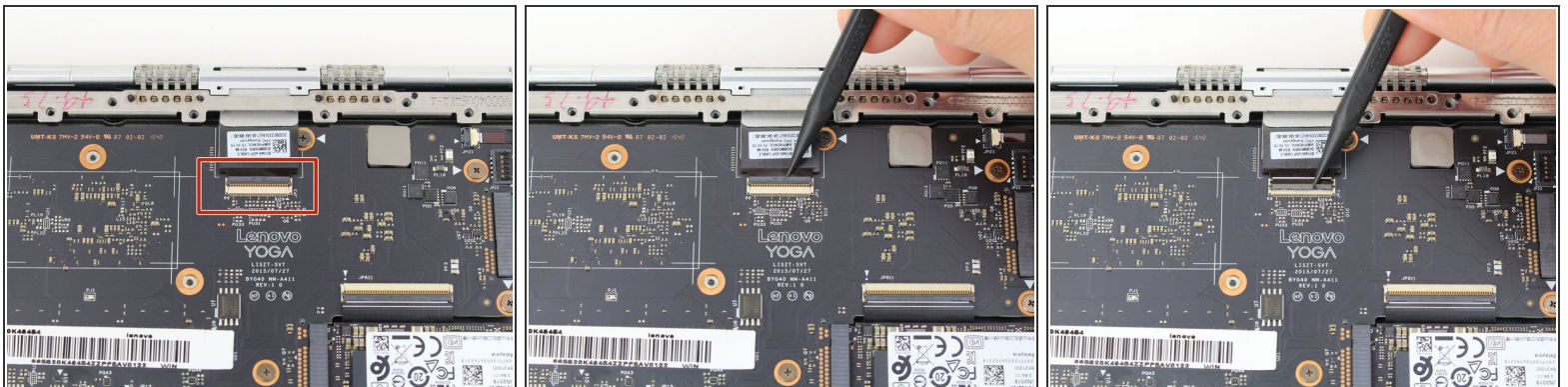
- ☑ While reassembling, use a plastic spudger to push the battery cable into the connector on the underside of the motherboard. This will be easier to do before the screws are replaced.

Step 5 — Display Assembly



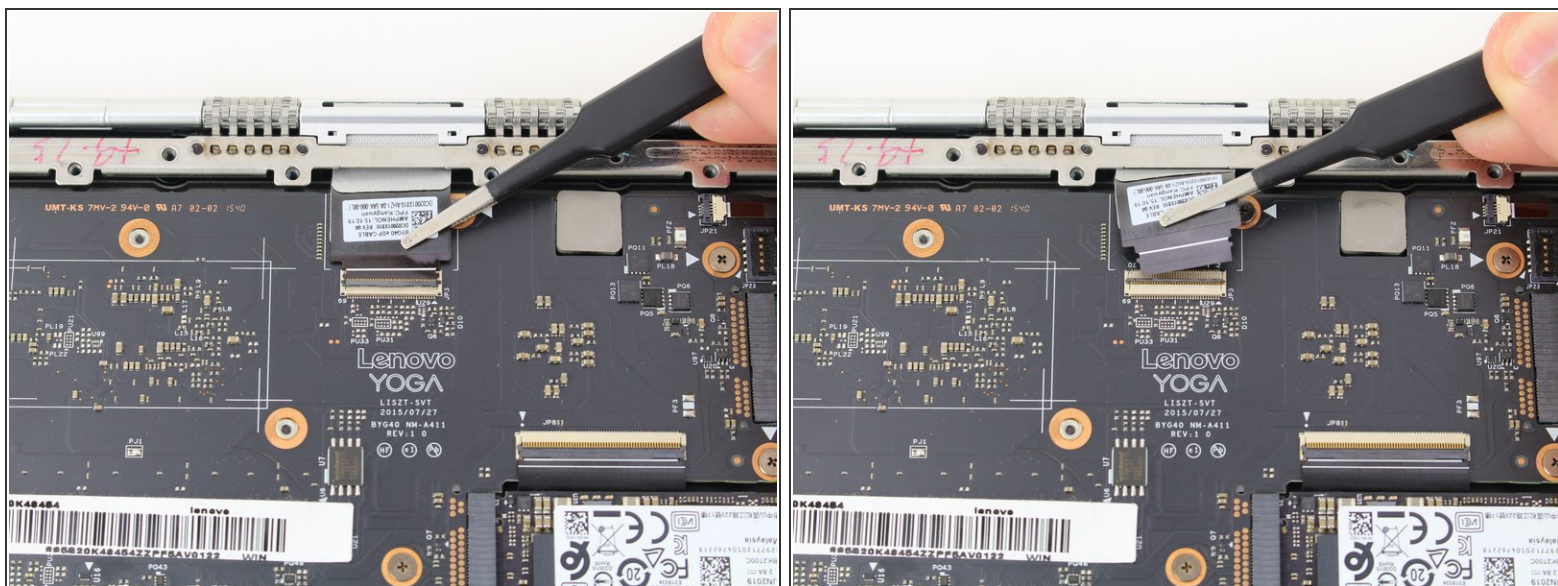
- Remove the ten 3.6 mm screws from the hinge bracket with a Phillips #00 screwdriver.

Step 6



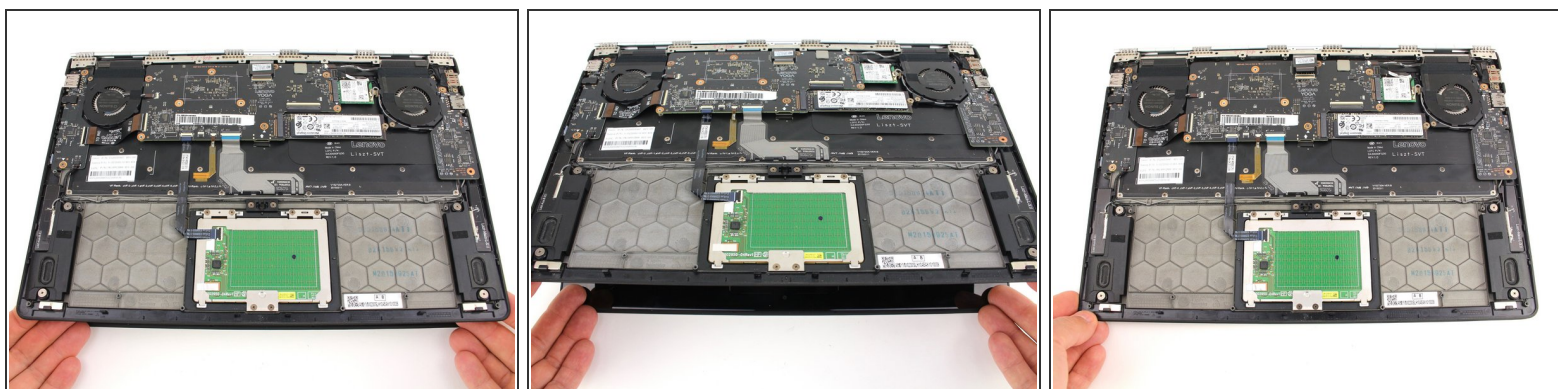
- Use the pointed end of a spudger to lift the hinged locking flap of the display [ZIF connector](#).

Step 7



- Pull out the display cable with a pair of blunt nose tweezers.

Step 8



- Open the laptop to a 45° angle, then close the laptop.
① This raises the hinge, which will stay open as the bottom case is lowered.

Step 9



- Slide the bottom case away from the hinge.
- ⓘ If the hinge is catching on the case, either go back to the previous step and open the case a bit more, or manually open the hinge with your fingers.

To reassemble your device, follow these instructions in reverse order.