



Keurig K-Mini Teardown

Keurig K-Mini Single Serve Coffee Maker outer shell and lid disassembly guide.

Written By: James Clutterbuck

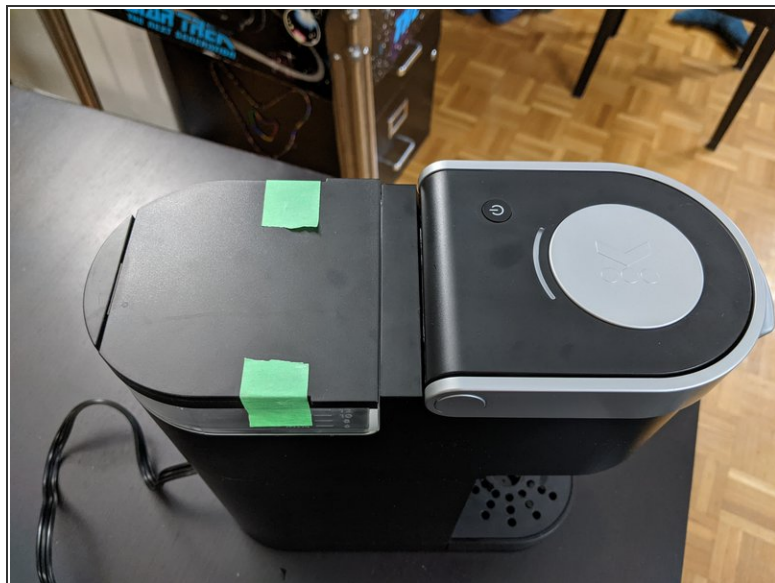




TOOLS:

- [Phillips #0 Screwdriver](#) (1)
-

Step 1 — Keurig K-Mini Teardown



- Unplug machine from the mains electricity.
- Tape down the water refill cover.

Step 2



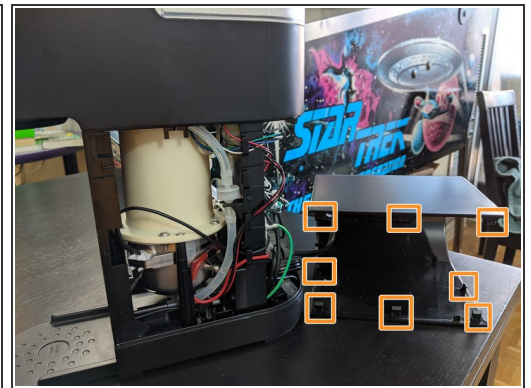
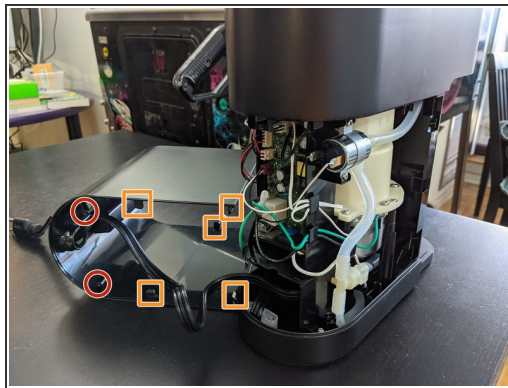
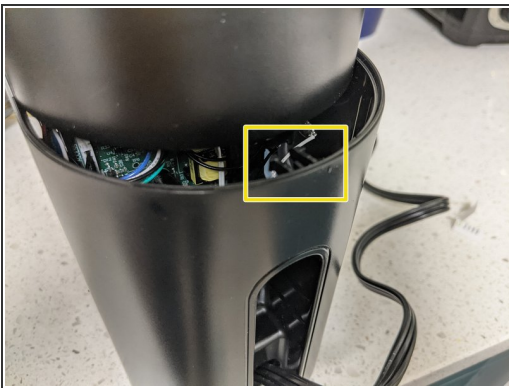
- Remove two phillips screws on the base.

Step 3



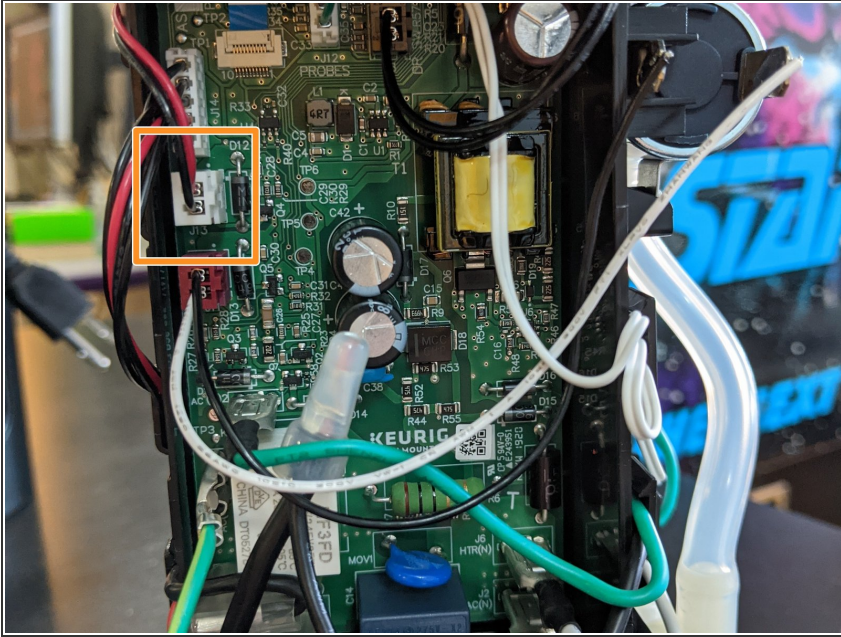
- Insert pry bar and slowly work your way down the side of unit popping out the clips.
- Repeat on the other side.

Step 4



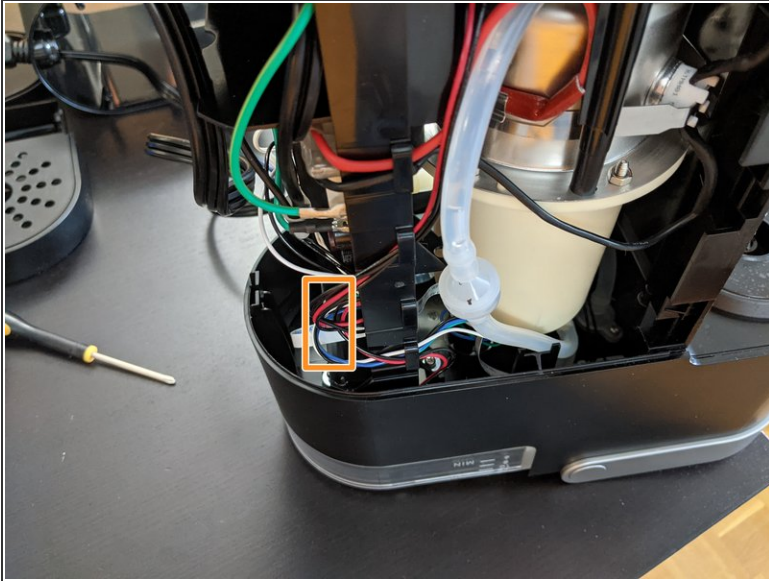
- This clip on the rear of the unit is particularly tricky to pop off, but popped off when the other chassis clips were all removed and held open, while pulling it backwards.
- There are 3 clips down each vertical side, 2 on the top middle and 2 on the bottom middle.
- This is where the screws screw in to. They need to be unhooked from the base to be able to pull it backwards and off.
- Getting the chassis off was particularly tricky, I recommend borrowing a second pair of hands if you can.

Step 5



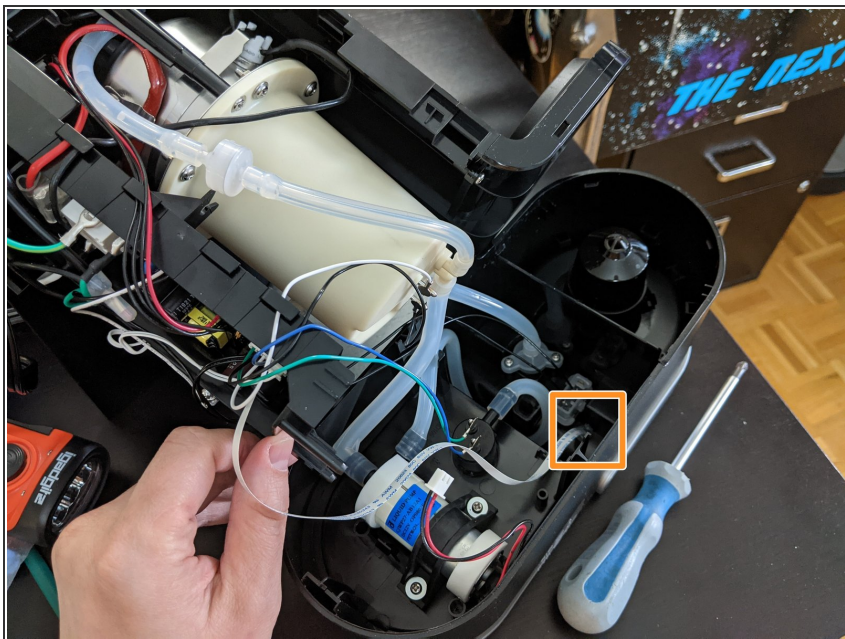
- Before separating the top section, unplug the water pump from the rear circuit board.

Step 6



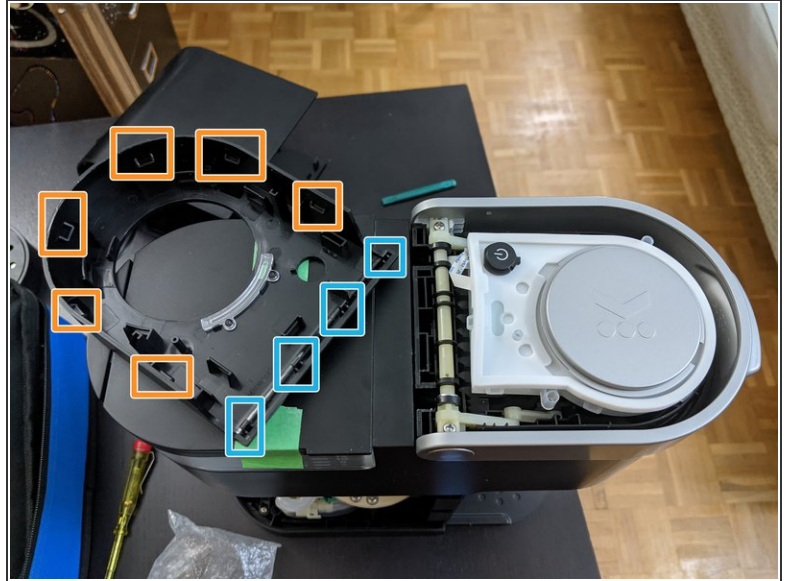
- Flip the unit upside down.
- The top of the unit is held in by one clip near the circuit board and clips around the cup spout
- Holding the unit upside down, work pry bars around the curve and the top will pop off.
- Once the front is popped off, you can wiggle the top section and it will separate from the base

Step 7



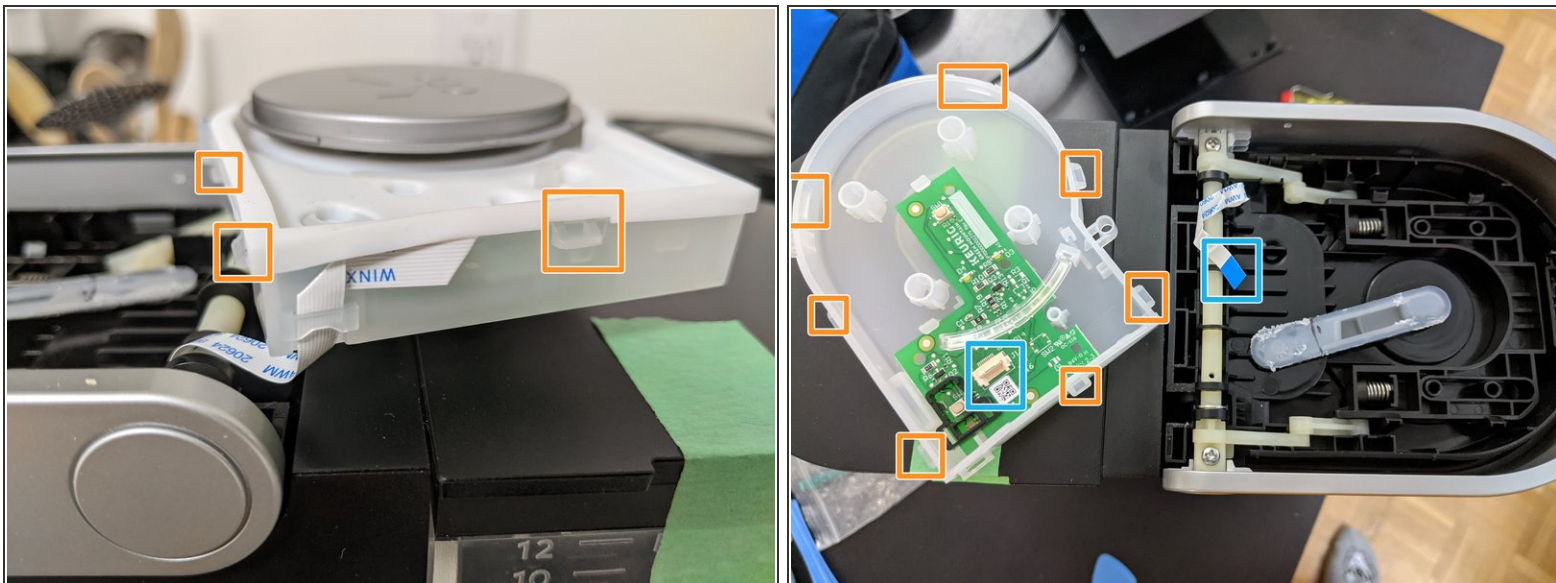
- The ribbon cable for the lid is glued in place and the lid can not be removed unless there is slack to pull.
- Gently pick at the silicon glue blob and it will come up at the edges. Slide it down the ribbon cable.

Step 8



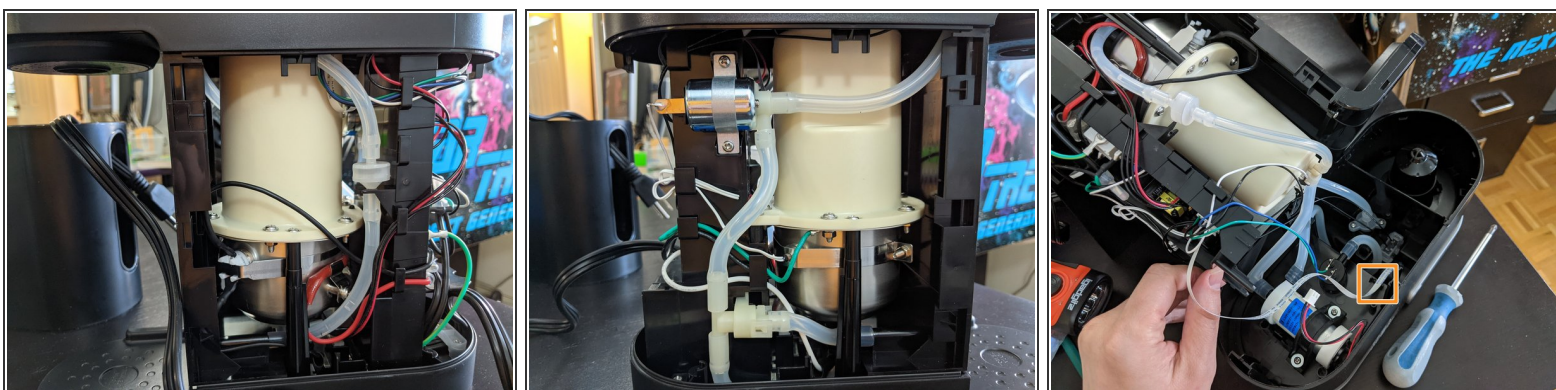
- There are six clips around the curved section and four clips along the hinge holding the top of the lid in place.
 - Apply pry bars around the curved section of the lid until the middle can be pulled out.
- ⚠ Be very careful not to hurt yourself on the spikes.
- Once the curved section has popped off, the lid will still be attached at the hinge section. Close the lid and pry along the back of the hinge section, pushing the lid top away from the water refill area until the lid pops off.

Step 9



- The white box has clips around the edge which can be easily popped off with a pry bar.
- Remove the K and power buttons. There are four springs under the K button to stabilize it.
- Under the white rubber cover it's the small latching connector for the lid ribbon cable.

Step 10



- Side views of the internals.

⚠ Make sure when re-assembling to clip all the wires in the right places, so they do not come in to contact with any hot parts and potentially melt!

- The lid ribbon cable has a little clip in the top of the chassis to keep it tucked away.

