



Replacement

This repair guide will cover the process of...

Written By: Austin Blakely



INTRODUCTION

This repair guide will cover the process of replacing the left side daughterboard in the Lenovo Yoga 900 13" 2-in-1 convertible computer (900-13ISK). The lefthand daughterboard in the Lenovo Yoga 900 houses the left-side USB-A port, the USB-C port, and the multi function card reader (**SD, MMC, SDXC, SDHC**), so if any of these ports malfunction, replacing the daughterboard will likely restore functionality to the broken port. Note that the charging port closest to the screen hinge is actually separate from the board, so if you are having charging woes, you can replace the DC jack separately using [this guide](#).

Note that the left side daughterboard contains the ports on the left side of the computer when viewed from the keyboard side, so it will be on the right side of the computer when viewed from the open bottom panel. If you were actually looking for the right side daughterboard guide, it can be found [here](#).

Be sure to unplug and completely turn off your device before you start working.

TOOLS:

T5 Torx Screwdriver (1)
Spudger (1)
Phillips #00 Screwdriver (1)

PARTS:

5C50K48474 - Lenovo Laptop I/O Board
- Genuine (1)

Step 1 — Back Cover



- Using a T5 Torx screwdriver, remove the ten 5.5 mm screws from the back case of the laptop.

Step 2



- Use a spudger to pry open the back case at the hinges of the laptop.
 - ① There are plastic clips around the perimeter of the case holding down the back cover. These will need to be popped off as the cover is removed.
- Use your fingers to completely pop off the back cover.

Step 3 — Battery



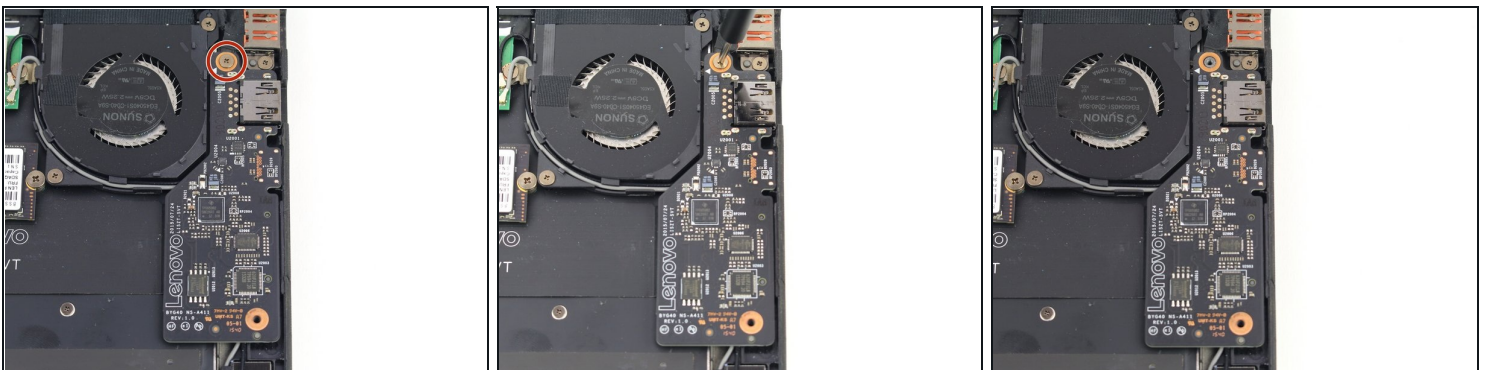
- Remove the five 3.6 mm screws from the battery with a Phillips #00 screwdriver.

Step 4



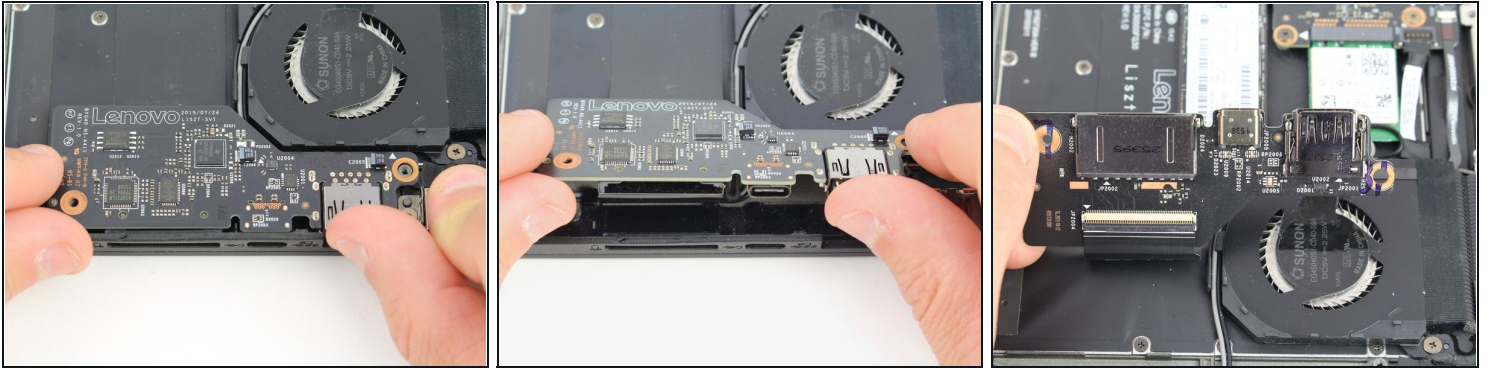
- Grab the bottom corners of the battery and gently pull the battery until the cable disconnects from the connector on the motherboard.
- ☑ While reassembling, use a plastic spudger to push the battery cable into the connector on the underside of the motherboard. This will be easier to do before the screws are replaced.

Step 5 — Left Daughterboard



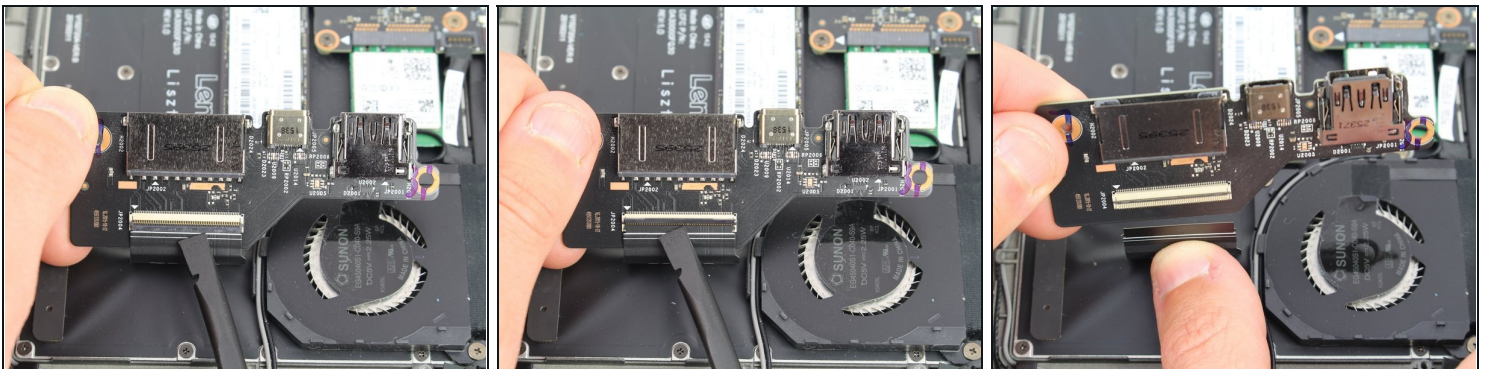
- Remove the single 3.6 mm screw from the daughterboard with a Phillips #00 screwdriver.

Step 6



- Grabbing the outside edge of the daughterboard, flip the board up to reveal the ZIF connector on the underside.

Step 7



- Using a spudger, flip up the hinged locking tab of the [ZIF connector](#) on the underside of the daughterboard.
- Pull the daughterboard away from the cable to disconnect.

To reassemble your device, follow these instructions in reverse order.