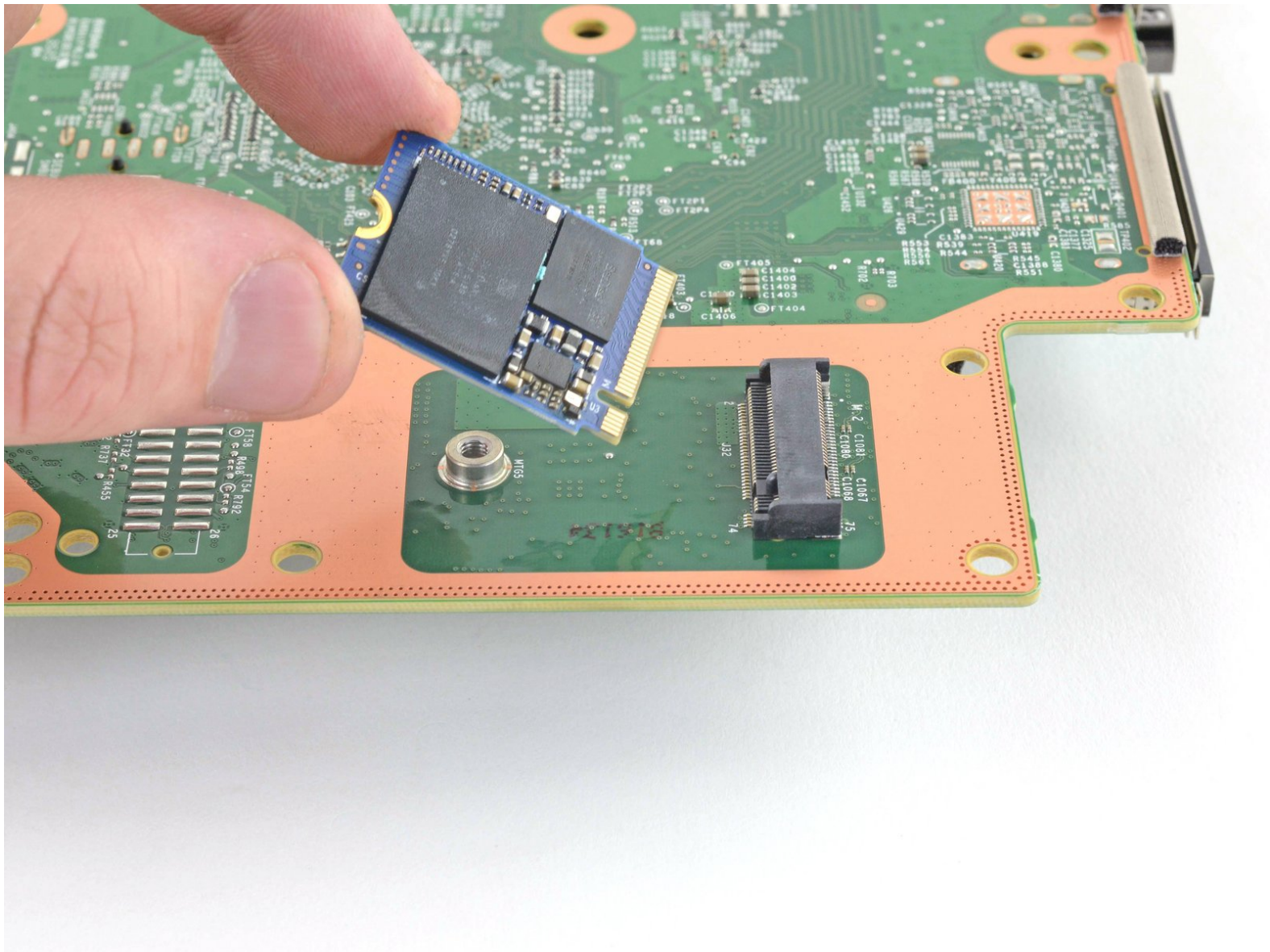




# Xbox Series S SSD Card Replacement

How to remove and replace the SSD card on a Xbox Series S.

Written By: Robert Boyd



## INTRODUCTION

Follow this guide to remove and replace the SSD card on a Xbox Series S.

There are some photo discontinuities with the exterior Bluetooth, Wifi, and power boards. These discontinuities do not affect the repair procedure.



### TOOLS:

- [Tweezers](#) (1)
- [TR8 Torx Security Screwdriver](#) (1)
- [TR10 Torx Security Screwdriver](#) (1)
- [Spudger](#) (1)



### PARTS:

- [Xbox Series S SSD](#) (1)

## Step 1 — Peel off the sticker coverings



**⚠ Before you start this guide, turn off the Xbox and unplug any cables from it.**

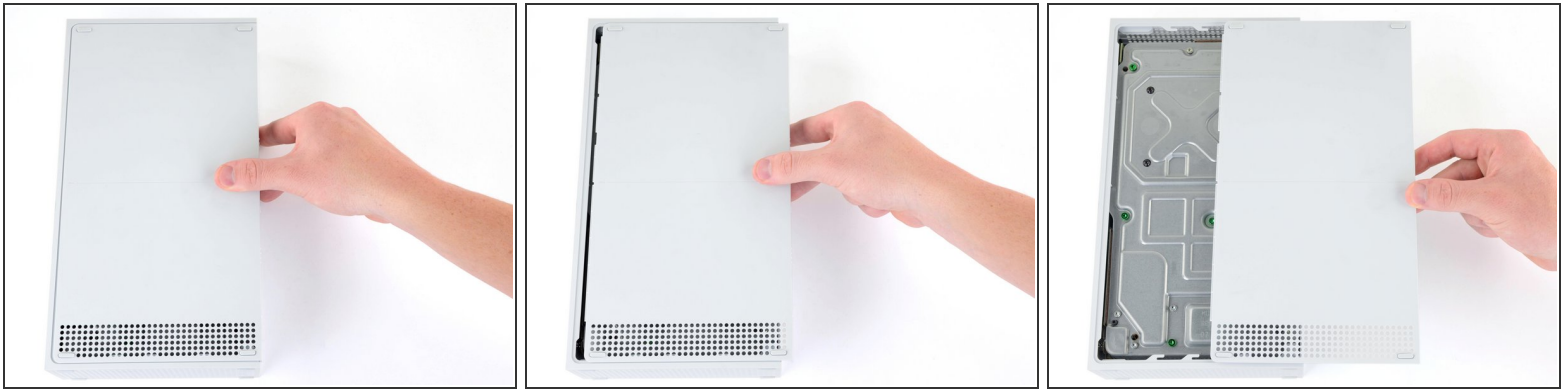
- Use tweezers to peel off the two white screw covers located on the bottom corners of the back panel.

## Step 2 — Remove the back panel screws



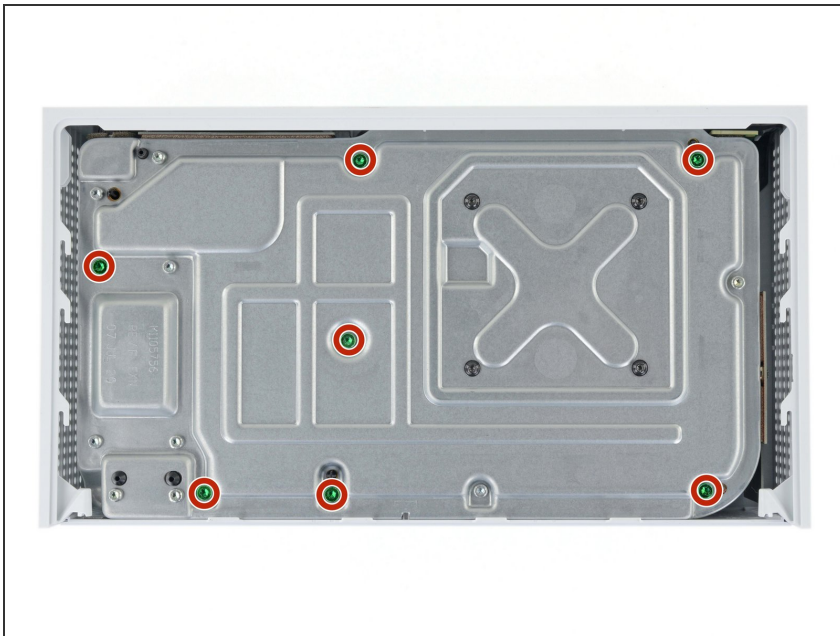
- Use a T8 Torx driver to remove the two 10 mm-long screws securing the back panel to the bottom panel.
- ⓘ Throughout this repair, [keep track of each screw](#) and make sure it goes back exactly where it came from.

### Step 3 — Remove the bottom panel



- Slide the bottom panel horizontally toward the back of the console until it comes to a stop.
  - ❗ This slides the clips out of the slots on the plastic case.
- Lift straight up and remove the bottom panel from the plastic case.

### Step 4 — Remove the plastic case screws



- Use a T10 Torx driver to remove the seven 51 mm-long screws securing the chassis to the plastic case.

## Step 5 — Remove the plastic case



- With the bottom of the Xbox facing you, pull the two bottom-rear corners of the plastic case away from each other.
- As you pull the corners apart, slide the back panel towards the bottom of the device. This releases the back panel from the plastic case.
- ⓘ The back panel should now settle on top of the clips on the back of the plastic case.
- ⓘ The back panel is permanently attached to the aluminum chassis.

**⚠ Do not attempt to fully remove the chassis from the plastic case with this technique. You may risk breaking your case.**

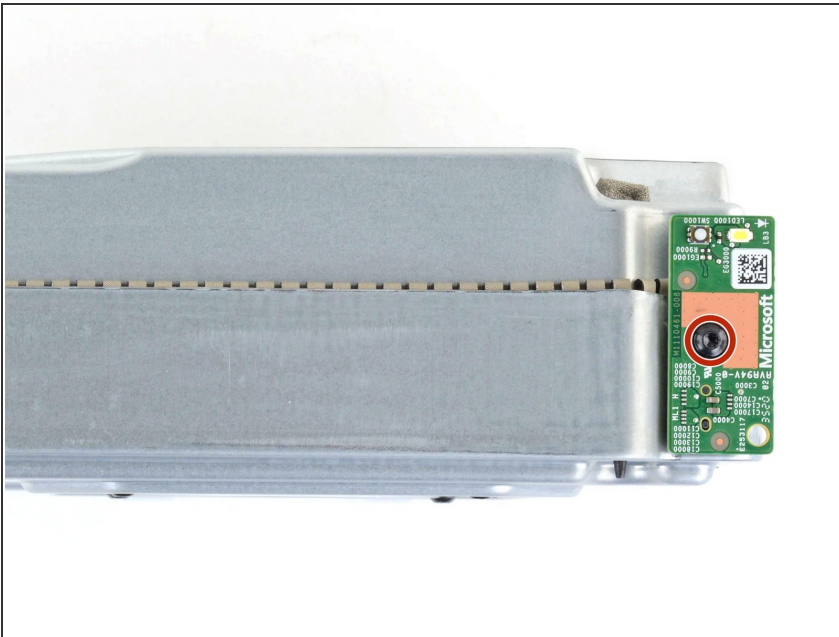


## Step 6



- Pull the bottom-left corner away from the chassis while swinging the chassis away from the plastic case.
- ❗ You may need to lift the chassis to free it from the clips on the bottom-front of the plastic case during this process.
- Remove the plastic case from the chassis.

## Step 7 — Remove the power button board



- Use a T8 Torx driver to remove the 9.5 mm-long screw securing the power button board to the chassis.

## Step 8



- Use a spudger to pry and loosen the power button board.  
**⚠ Do not pry from the bottom of the power button board as it may bend the connector.**
- Pull the power button board straight out to disconnect it from the chassis.

## Step 9 — Remove the Wi-Fi board



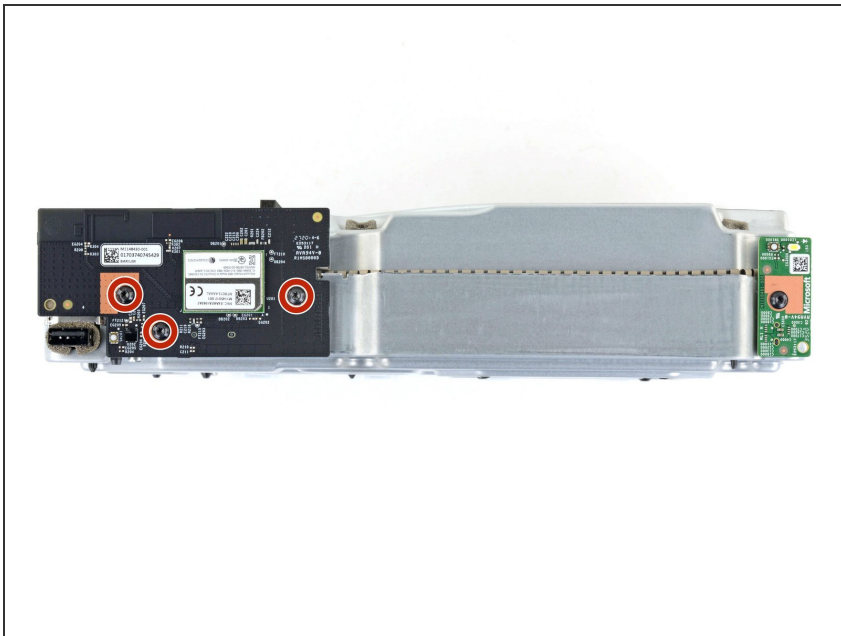
- Use a T8 Torx driver to remove the three 9.5 mm-long screws securing the Wi-Fi board to the short edge of the chassis.

## Step 10



- Use a spudger to pry and loosen the Wi-Fi board.  
**⚠ Do not pry from the bottom or sides of the Wi-Fi board as it may bend the connector.**
- Pull the Wi-Fi board straight out to disconnect it from the chassis.

## Step 11 — Remove the Bluetooth board



- Use a T8 Torx driver to remove the three 9.5 mm-long screws securing the Bluetooth board to the long edge of the chassis.

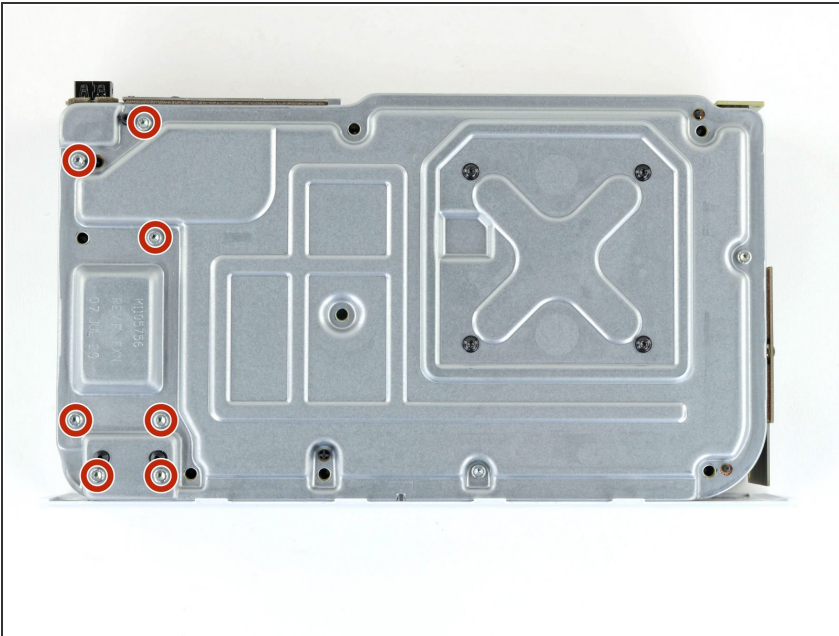


## Step 12



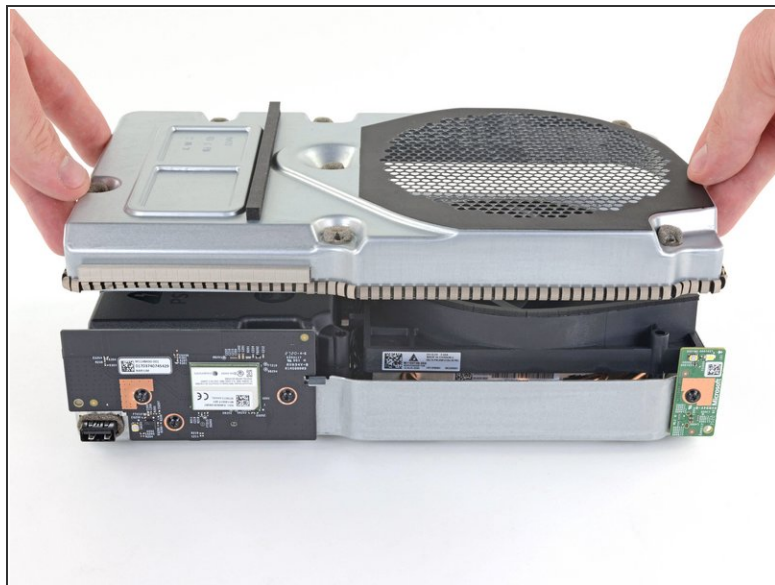
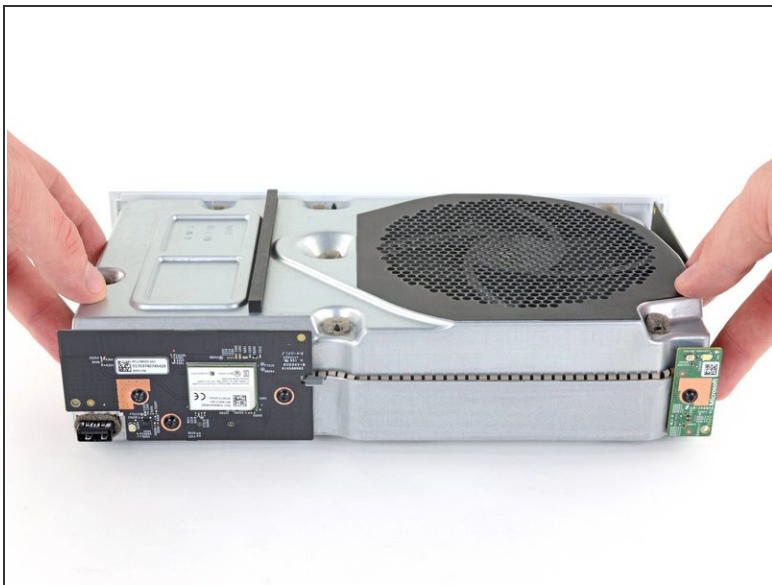
- Use a spudger to pry and loosen the Bluetooth board.  
**⚠ Do not pry from the bottom or sides of the Bluetooth board as it may bend the connector.**
- Pull the Bluetooth board straight out to disconnect it from the chassis.

## Step 13 — Remove the power supply screws



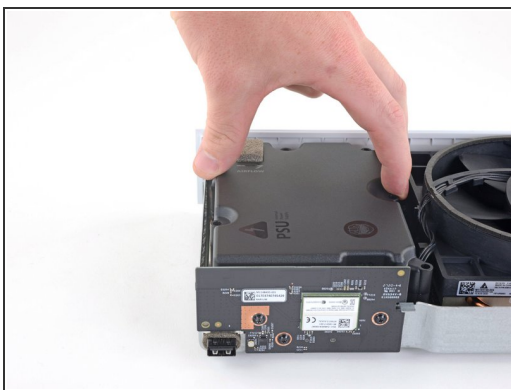
- Use a T10 Torx driver to remove the seven 11.3 mm-long screws securing the power supply to the chassis.

## Step 14 — Remove the upper chassis



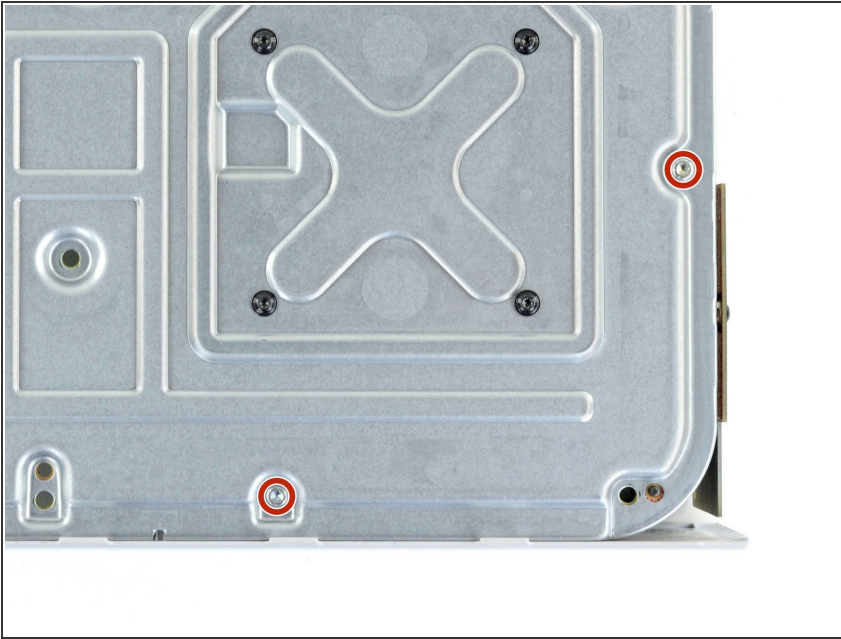
- Flip the device over.
- Lift the upper chassis straight up to remove it.

## Step 15 — Remove the power supply



- Lift the power supply straight up to disconnect it from the motherboard.
- Remove the power supply.

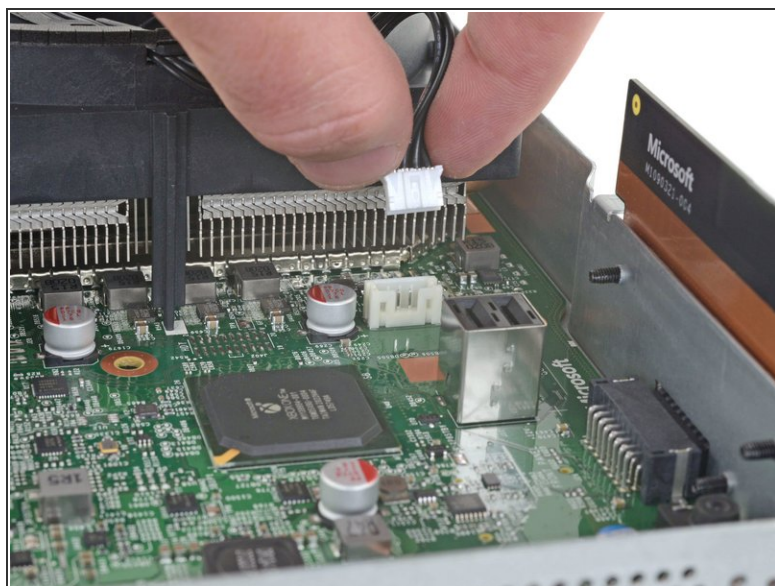
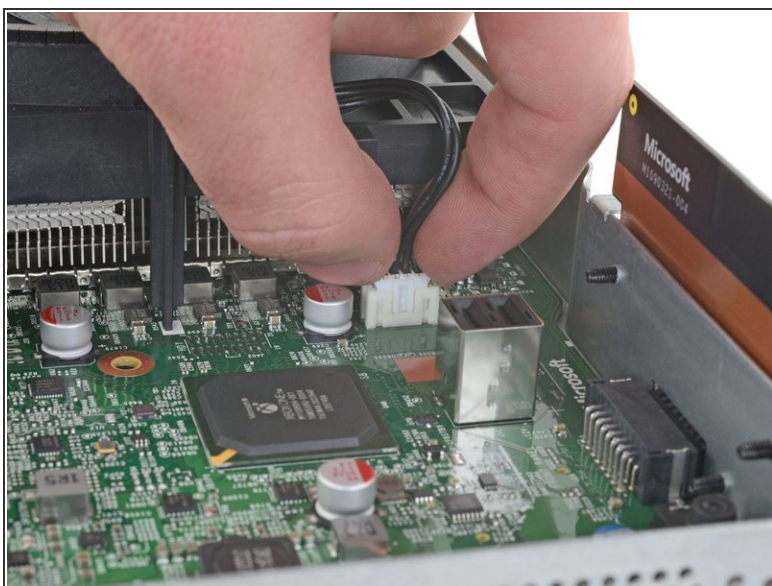
## Step 16 — Remove the fan screws



- Use a T10 Torx driver to remove the two 11.3 mm-long screws securing the fan to the chassis.



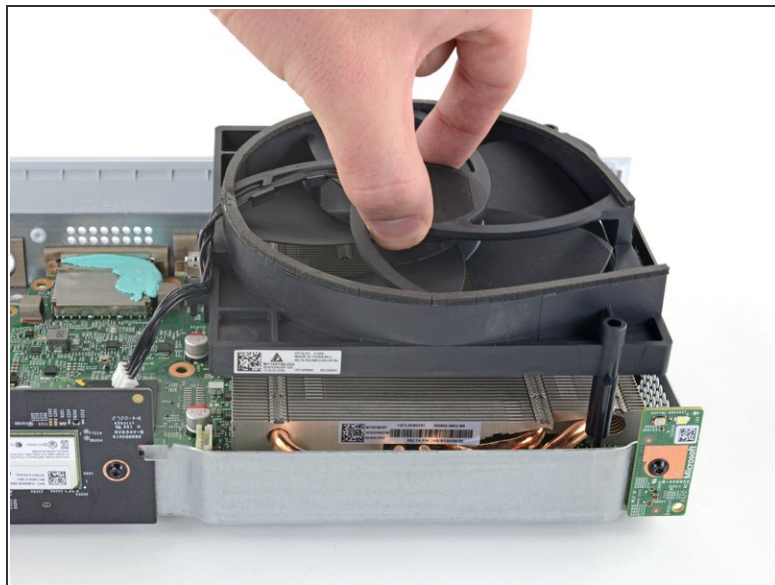
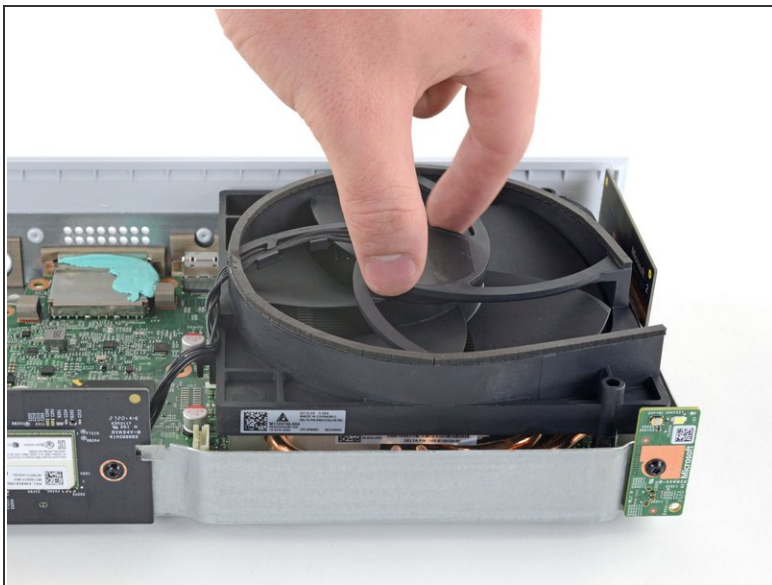
## Step 17 — Disconnect the fan



- Flip the device over.
  - ⚠ Take care when flipping the chassis over because the fan is now loose.
- Use your fingers to pull and disconnect the fan connector from its motherboard socket.
  - ⚠ Take care not to pull on the wires when disconnecting the fan to prevent breaking the connector.
  - ⓘ This connector may be difficult to remove. A good method to remove it is to shimmy the connector up and out of its socket with a spudger.
  - ⓘ You may be able to remove this connector without removing the power supply with a pair of needle-nose pliers.

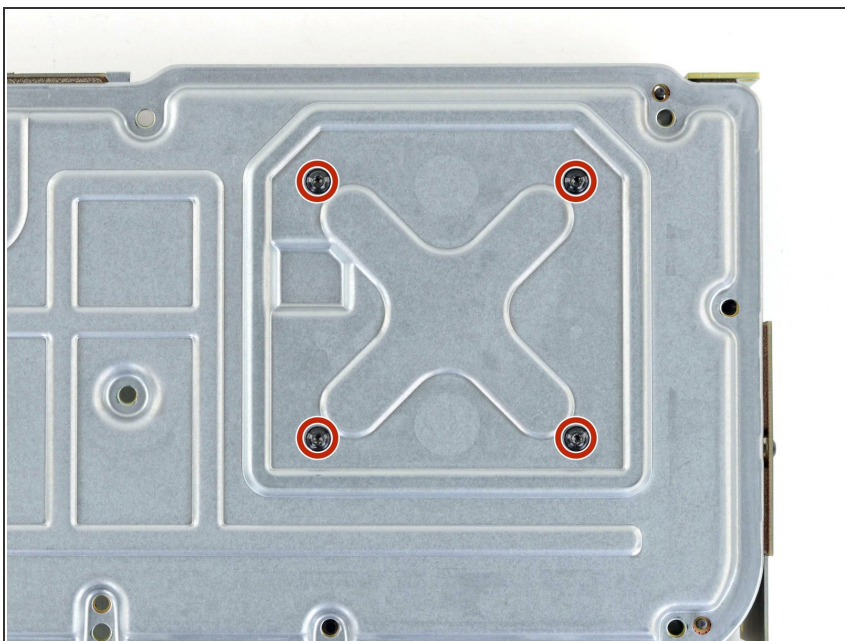


## Step 18 — Remove the fan



- Lift the fan straight up to remove it from the motherboard.

## Step 19 — Remove the motherboard screws



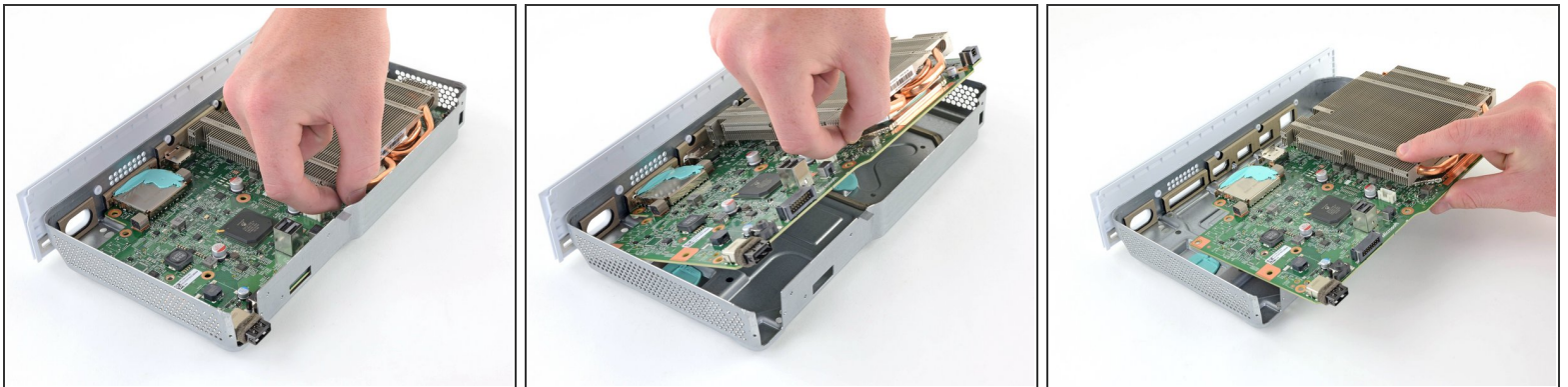
- Use a T8 Torx driver to remove the four 9.4 mm-long screws securing the motherboard to the chassis.

## Step 20 — Remove the locking clip



- Flip the device over.
- Insert a spudger into the locking clip located on the front-left corner of the chassis.
  - ❗ This will open up the clip to make it easier to remove.
- Lift straight up to remove the clip.

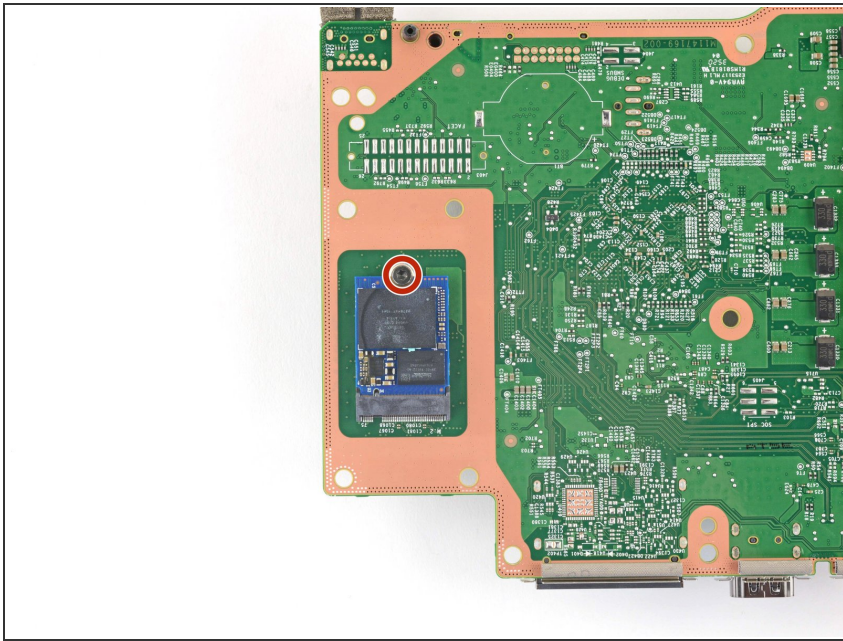
## Step 21 — Remove the motherboard



- Grasp the heat sink with your fingers and lift up the front of the motherboard up above the edge of the chassis.
- Pull the motherboard towards the front of the chassis to remove it.

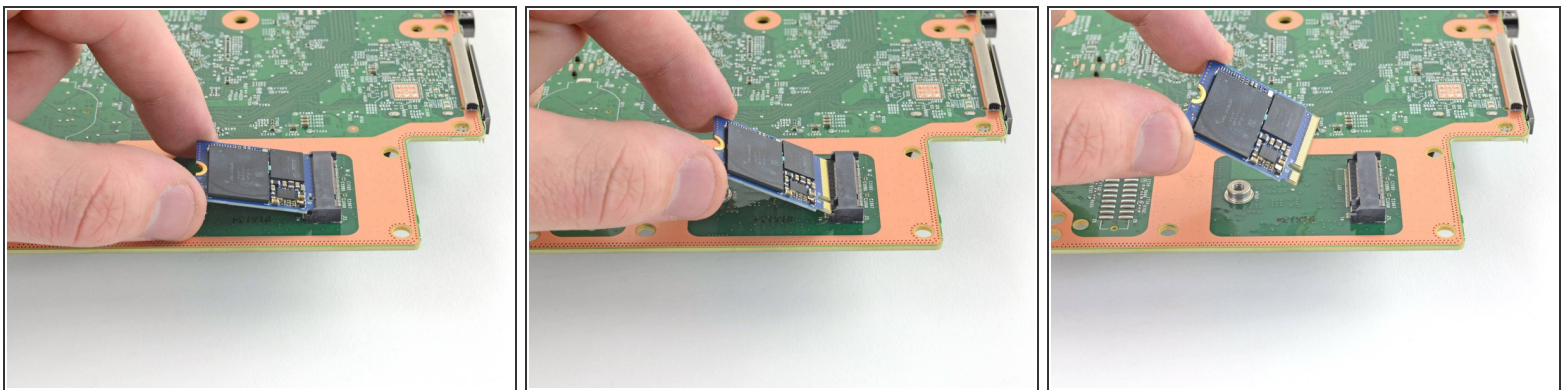


## Step 22 — Remove the SSD card



- Use a T8 Torx driver to remove the 5.1 mm-long screw securing the SSD card to the motherboard.

## Step 23



- Pull the SSD card straight out and remove it from the motherboard.

**To reassemble your device, follow these instructions in reverse order.**

Take your e-waste to an [R2 or e-Stewards certified recycler](#).

Repair didn't go as planned? Try some [basic troubleshooting](#), or ask our [Answers community](#) for help.