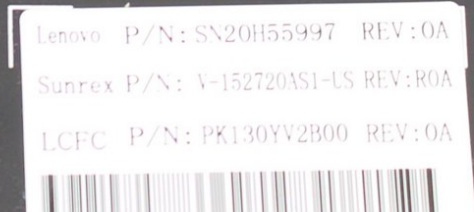


Written By: Austin Blakely



INTRODUCTION

This guide will show you how to replace the righthand I/O board in the Lenovo Yoga 900 13" laptop computer (900-13ISK). The righthand daughterboard contains the power button, auxiliary port, and right-side USB port, so if any of these components start to experience issues, a righthand daughterboard replacement will likely solve the problem.

Note that the right side daughterboard contains the ports on the right side of the computer when viewed from the keyboard side, so it will be on the left side of the computer when viewed from the open bottom panel. If you were actually looking for the left side daughterboard guide, it can be found [here](#).

This daughterboard also houses the cable connection to the speakers, so if the board itself is damaged, it may cause some sound issues with the computer. Speaker issues experienced after water exposure to the right side of the laptop may be alleviated by replacing this daughterboard, especially if new speakers do not help to solve the problem.

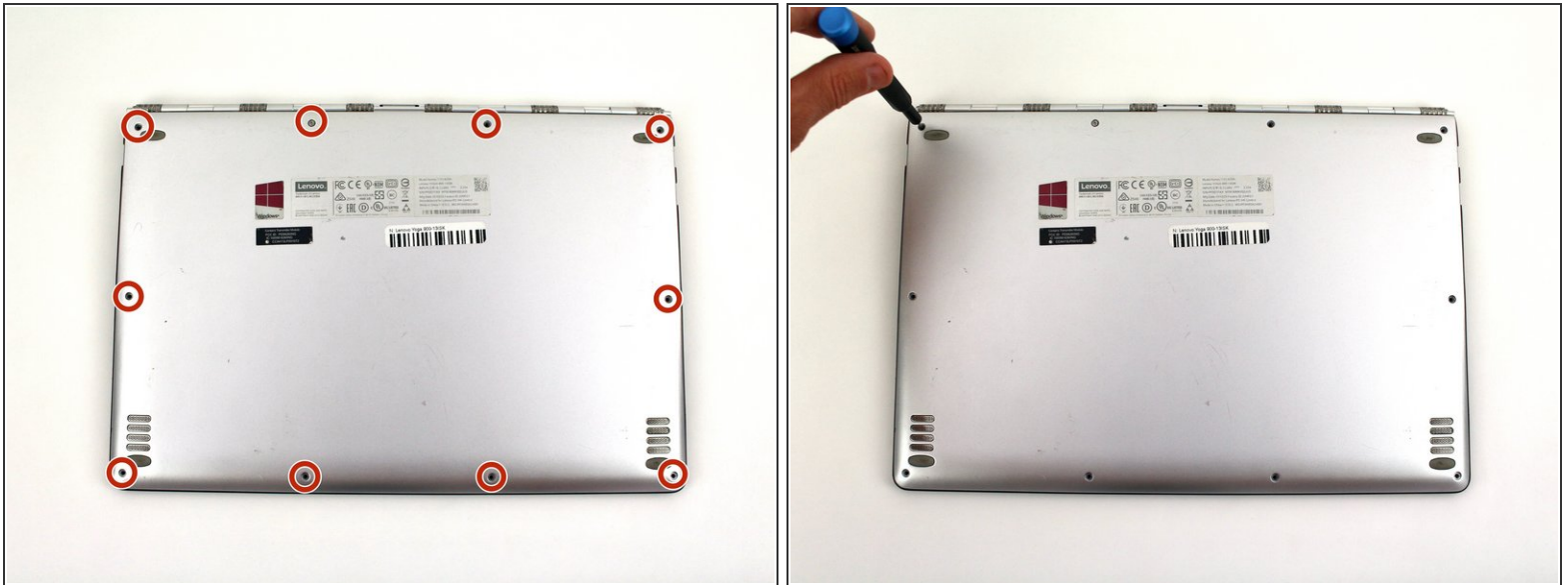
Be sure to unplug and completely turn off your device before you start working.



TOOLS:

- [T5 Torx Screwdriver](#) (1)
 - [Spudger](#) (1)
 - [Phillips #00 Screwdriver](#) (1)
 - [ESD Safe Tweezers Blunt Nose](#) (1)
-

Step 1 — Back Cover



- Using a T5 Torx screwdriver, remove the ten 5.5 mm screws from the back case of the laptop.

Step 2



- Use a spudger to pry open the back case at the hinges of the laptop.
 - ❗ There are plastic clips around the perimeter of the case holding down the back cover. These will need to be popped off as the cover is removed.
- Use your fingers to completely pop off the back cover.

Step 3 — Battery



- Remove the five 3.6 mm screws from the battery with a Phillips #00 screwdriver.

Step 4



- Grab the bottom corners of the battery and gently pull the battery until the cable disconnects from the connector on the motherboard.

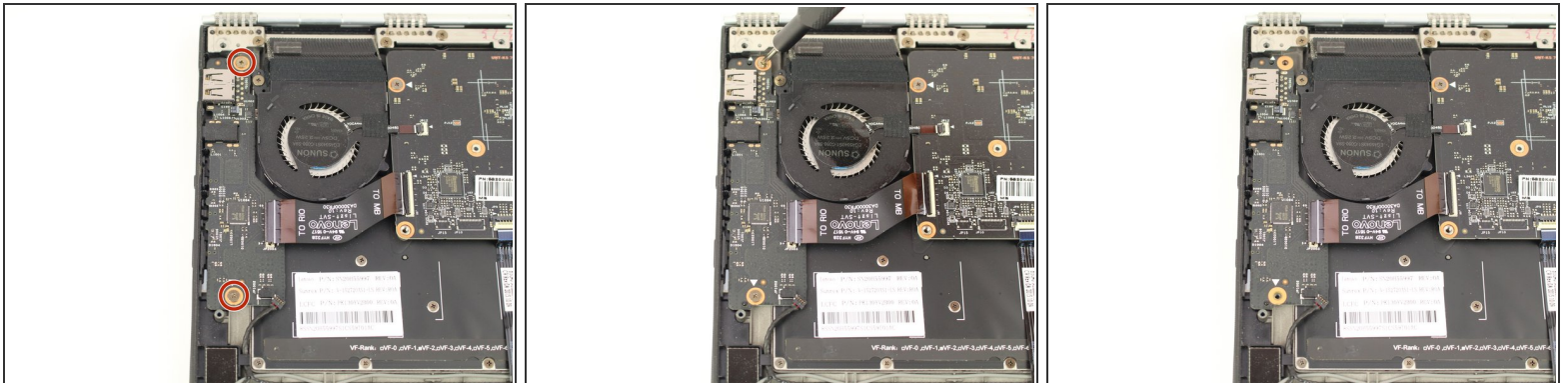
- ☑ While reassembling, use a plastic spudger to push the battery cable into the connector on the underside of the motherboard. This will be easier to do before the screws are replaced.

Step 5 — Right Daughterboard



- Use a pair of blunt nose tweezers or your fingers to pull out the speaker cable from the connector on the lower portion of the daughterboard.

Step 6



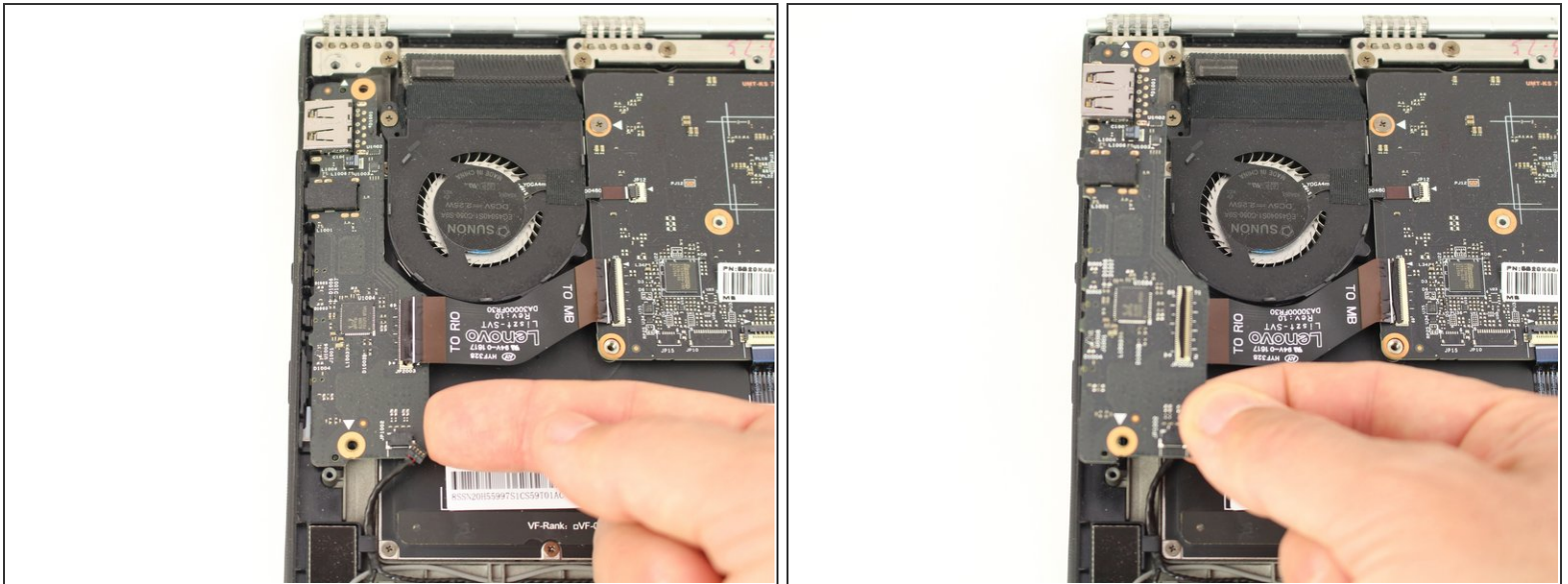
- Using a Phillips #00 screwdriver, remove the two 3.6 mm screws from the daughterboard.

Step 7



- Use a spudger to lift up the black locking tab of the [ZIF connector](#) holding the interconnect cable.
- Pull out the interconnect cable with a pair of blunt nose tweezers.

Step 8



- Pick up the daughterboard from the right side and lift it out from the case.

To reassemble your device, follow these instructions in reverse order.