



Toshiba Portege M400 Touchpad Replacement

Use this repair guide to replace the touchpad on the Toshiba Portege M400.

Written By: Varsha Roopreddy



INTRODUCTION

In this guide, you will learn how to disassemble and reassemble your Toshiba Portege laptop to replace a broken touchpad.



TOOLS:

- [Phillips #00 Screwdriver](#) (1)
 - [iFixit Opening Tools](#) (1)
-

Step 1 — Keyboard



- Remove the front face plate with a plastic opening tool.
- Unscrew and remove the two 3.8mm screws labeled B3 with the #1 Phillips screwdriver.

Step 2



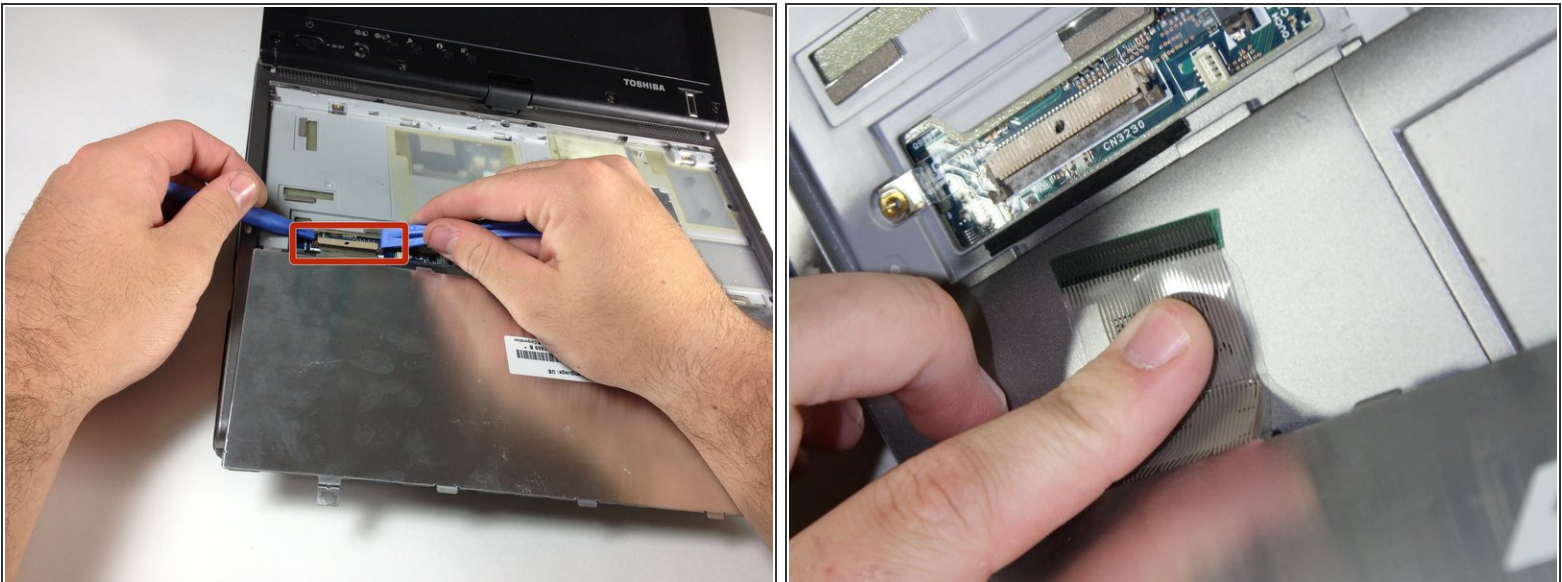
- Lift the keyboard toward you starting from the edge closest to the screen.
- ⓘ This ribbon still connects the tactor to the keyboard.
- Gently place the keyboard on top of the track pad with the keys upside down.

Step 3



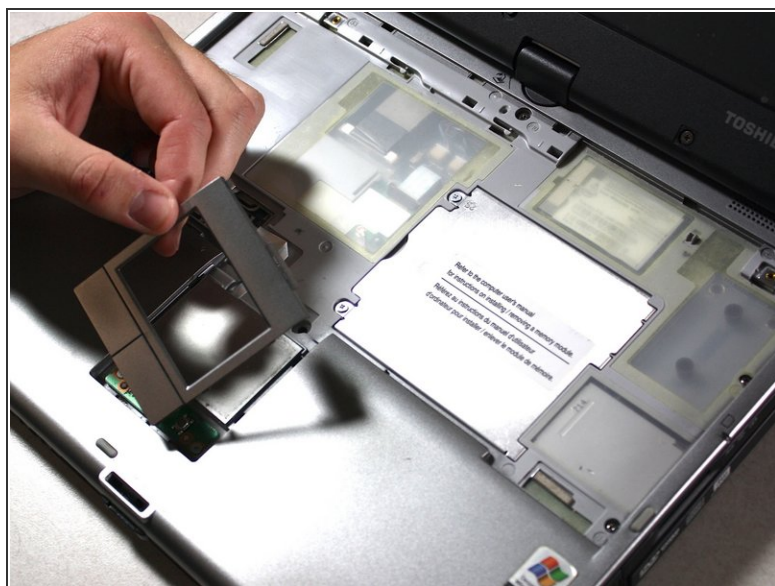
- Find the white ribbon connector (where the keyboard is still attached to the rest of the laptop).
- Remove the screw on the metal plate that keeps the ribbon from sliding out.
- Gently remove the metal plate and set it aside.

Step 4



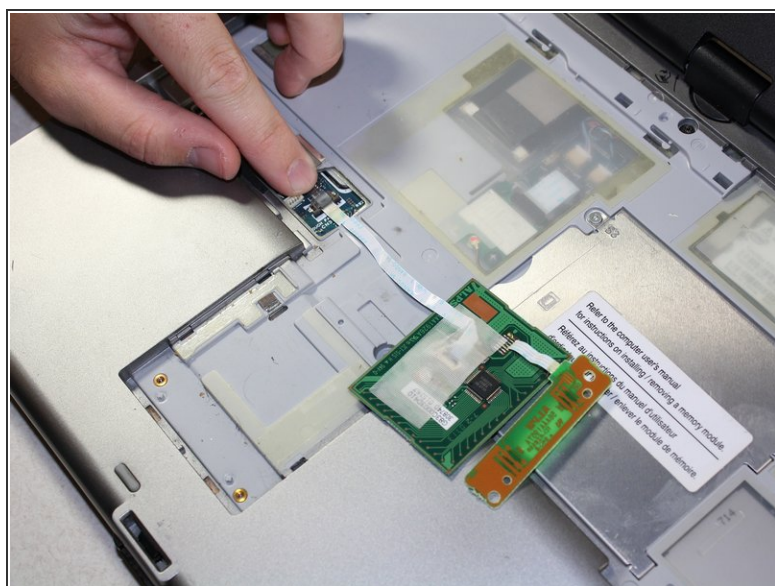
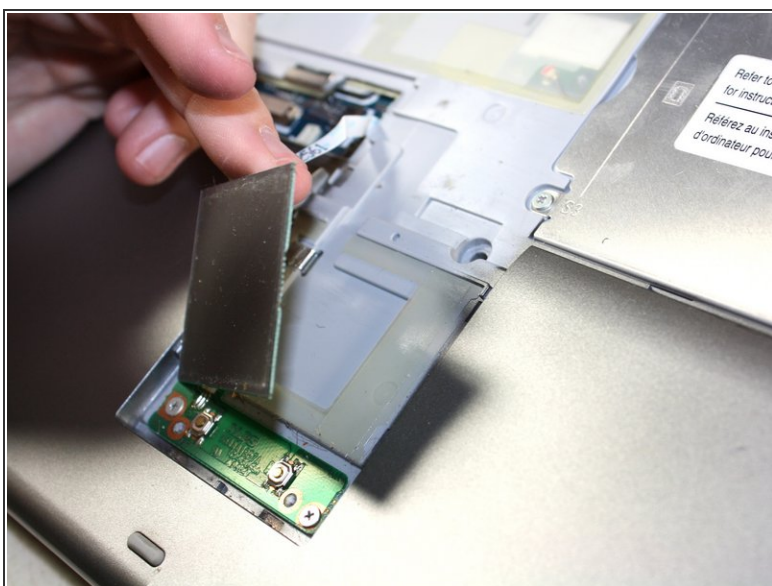
- Dislodge the white ribbon connector from the two clips holding it in place using the plastic opening tools.
- Pull out the white ribbon connector with your fingers.

Step 5 — Touchpad



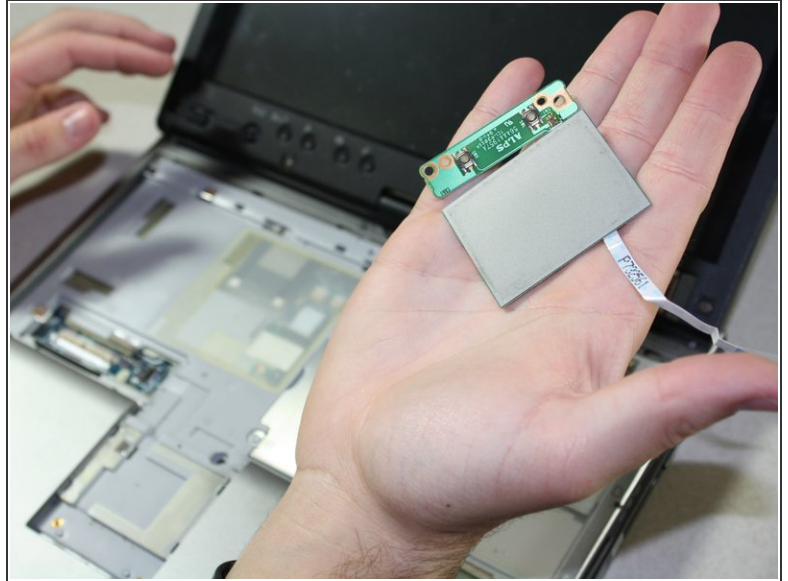
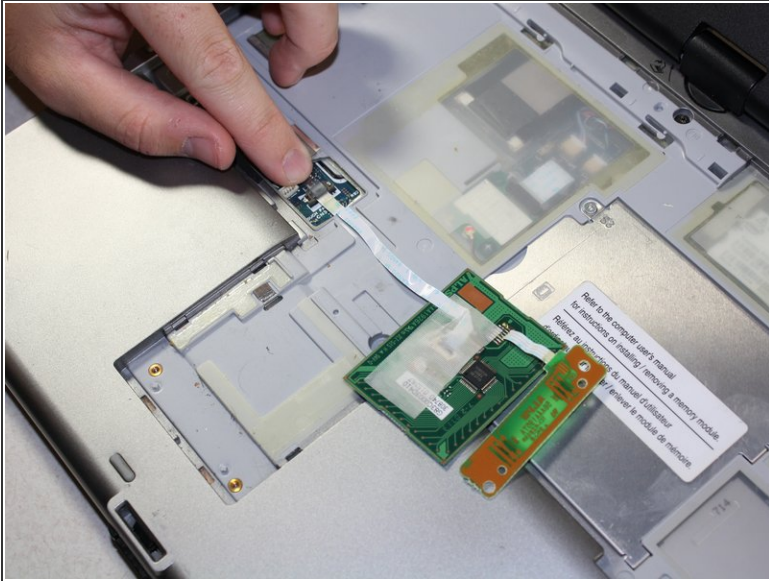
- Use a plastic opening tool to carefully remove the cover of the touchpad.
- Remove the one 1/2" inch screw on the backside of the laptop.

Step 6



- Gently pull up the touch-pad piece and lay it upside down.
- ⓘ The touch-pad will still be connected to the computer.

Step 7



- Pull back the tab to disconnect the touchpad to the laptop.

To reassemble your device, follow these instructions in reverse order.