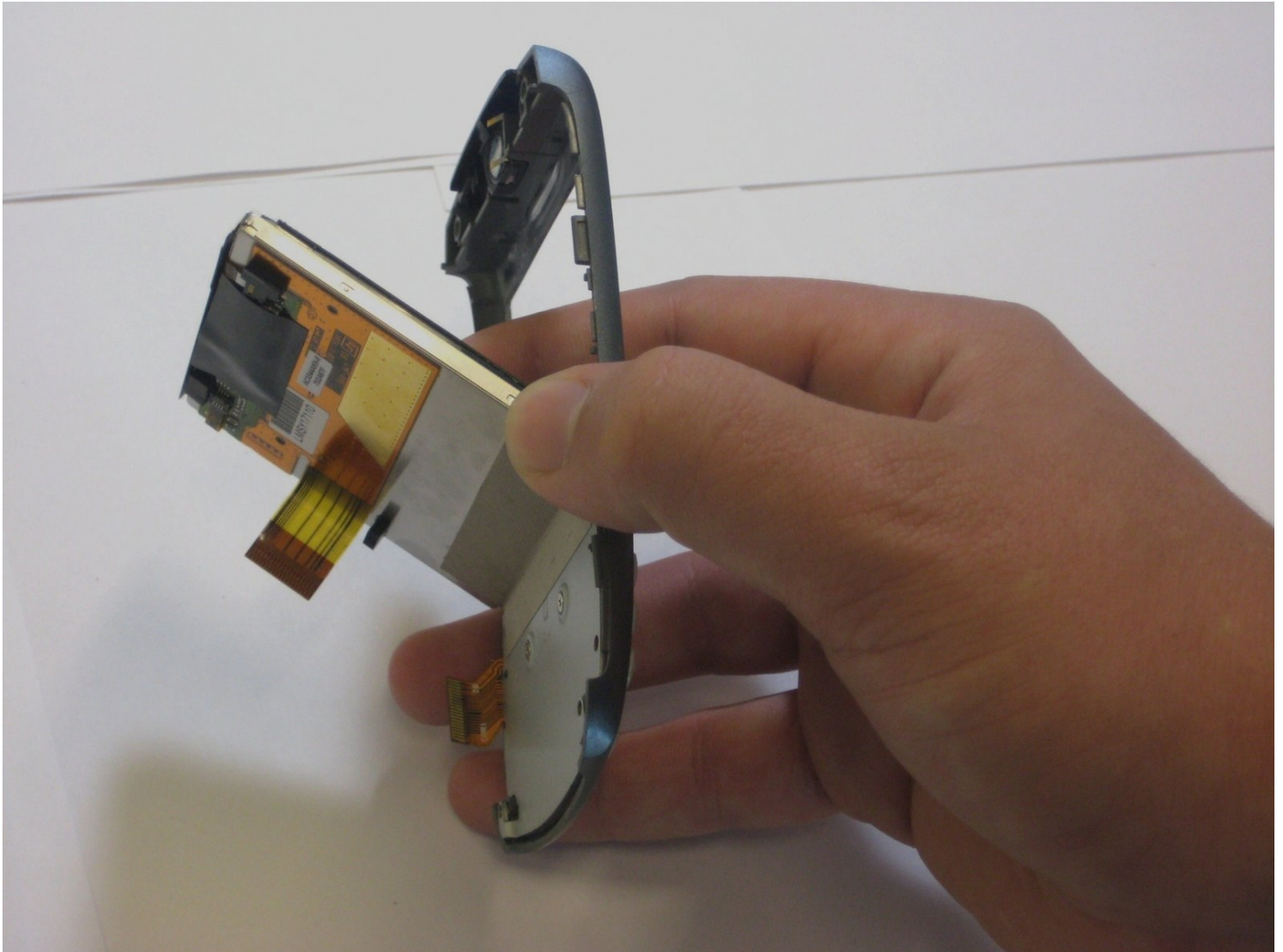




Palm Treo 680 screen replacement

This guide will show you how to easily remove...

Written By: Maiya123



INTRODUCTION

This guide will show you how to easily remove and repair a dysfunctional Palm Treo 680 LCD Screen/Touch Screen with 4 easy steps.

TOOLS:

Phillips #00 Screwdriver (1)

Spudger (1)

Tweezers (1)

Step 1 — Battery



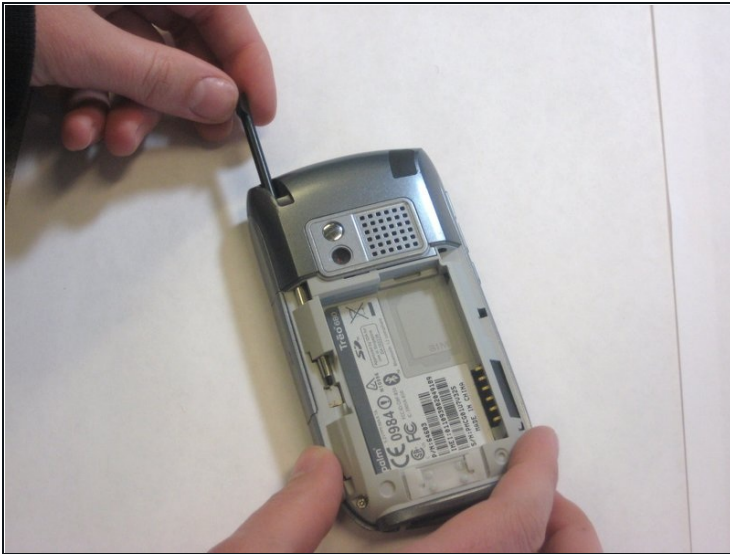
- Remove the battery cover by pressing on the small rectangular button located on the back of the phone.

Step 2



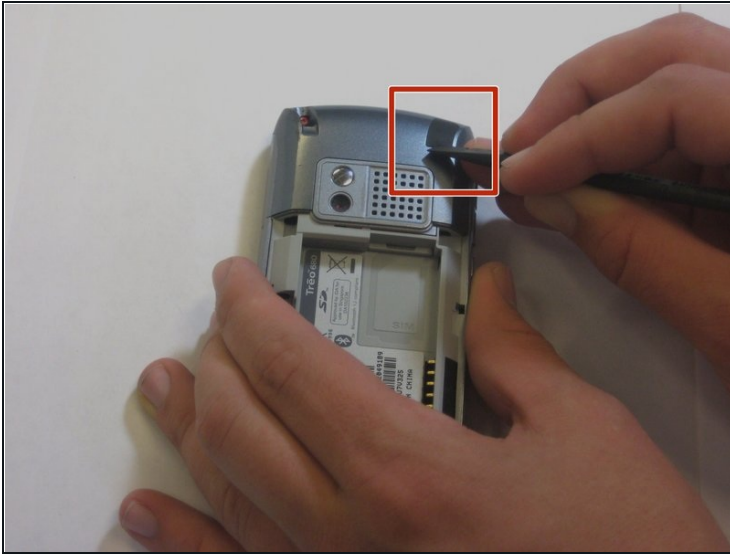
- Remove the battery by pulling it out towards you.

Step 3 — Back Panel



- Remove the stylus in order to access the screw.
- Remove the 27mm top-left screw using a T6 Torx screwdriver.

Step 4



- Using the spudger, remove the rubber rectangular cover located in the upper rear, right-hand corner.
- Remove the 27mm screw using the T6 Torx screwdriver.
 - ⓘ If there is a red Palm sticker covering this screw, puncture it to access the screw.

Step 5



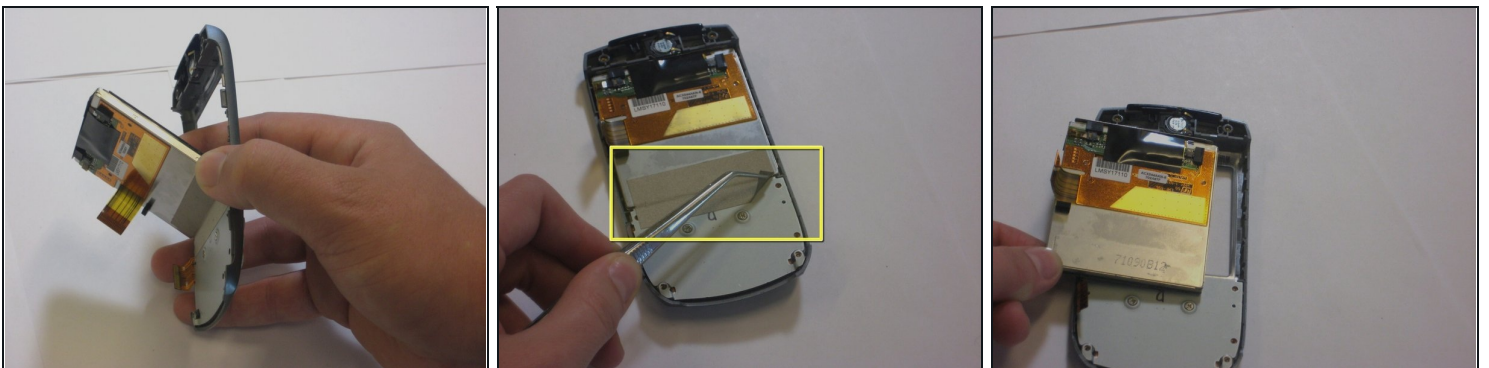
- Remove the remaining two 27mm screws from the bottom using the T6 screwdriver.

Step 6



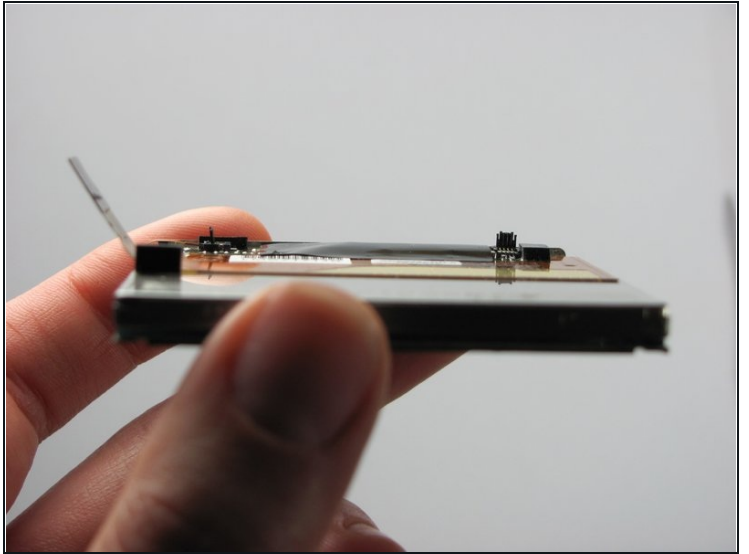
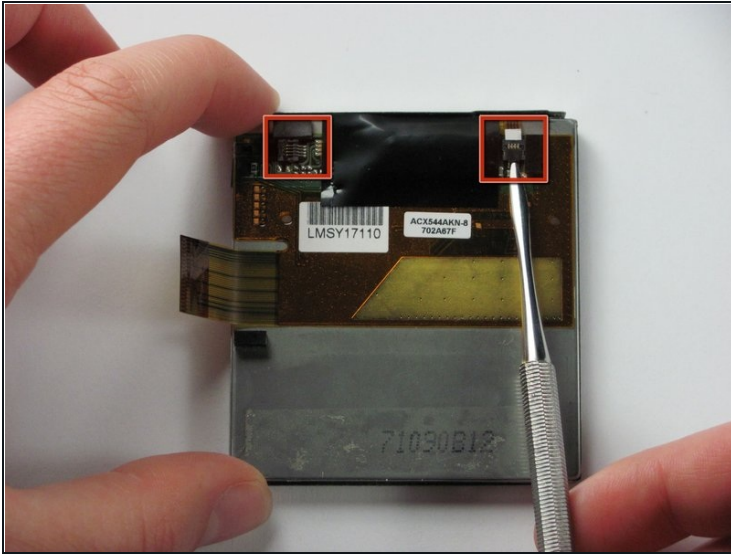
- Turn the phone so the screen is facing the right side.
- Use a spudger to carefully separate the back panel from the front panel to access components inside the phone.
- Separate the covers from the left side of the device as indicated in the picture.
⚠ The right side contains orange ribbons that are easily damaged.

Step 7 — LCD Screen and Touch Screen



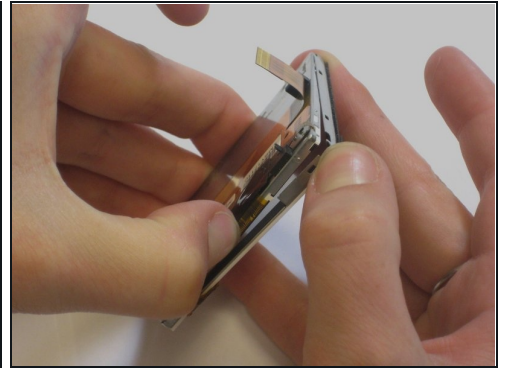
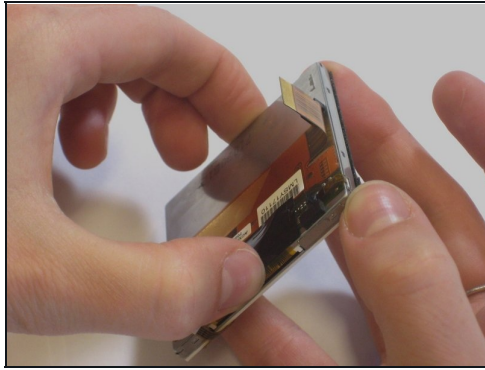
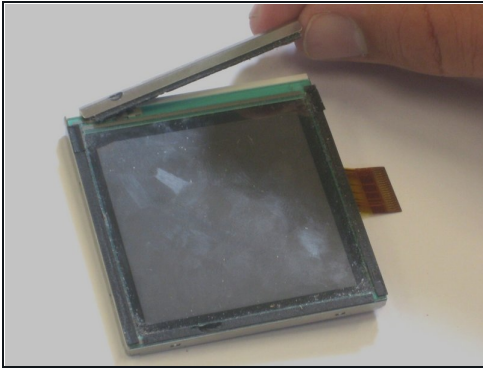
- Take the front of the pannel and take notice that the screen is attached by a piece of silver tape.
- Using a pair of [tweezers](#), carefully peel off this piece of silver tape.
- Remove the screen from the front pannel by pushing it out.

Step 8



- Locate the 2 small plastic flaps that hold the small orange ribbons in place on both sides. Using a small metal spudger, flip up both of the flaps.
- ① Do the same thing for one flap that you do for the other.

Step 9

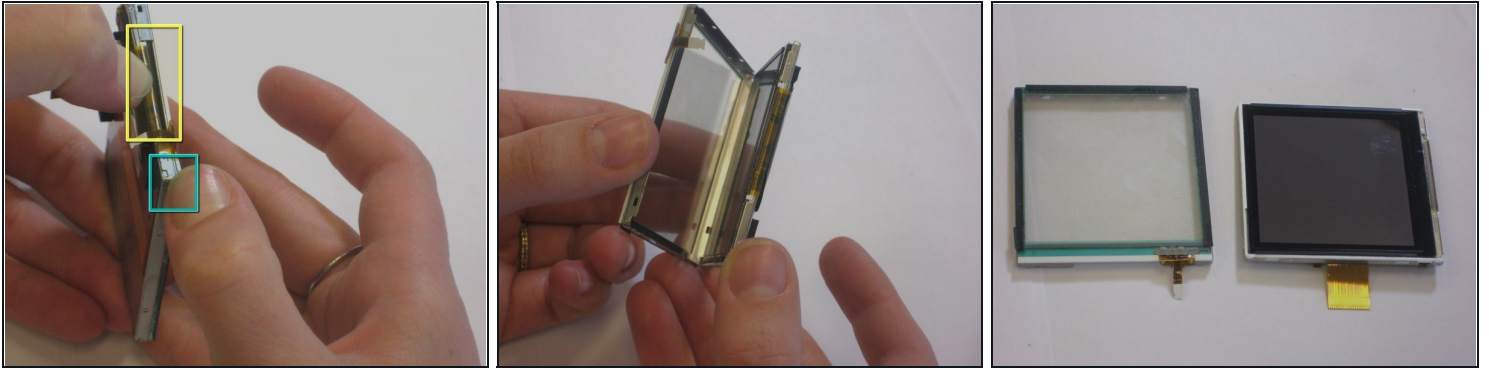


- Flip the screen over 180 degrees and take off the metal piece that cushions the screen.
- Flip the screen over another another 180 degrees and place pressure on the bottom ribbon (Where my left thumb is).

⚠ Do not pull the two screens completely apart yet.

- Slightly start to pull apart the touch screen from the LCD screen by placing your thumbs where my thumbs are.
- ☞ This part is tricky and might take some maneuvering and a little bit of force, but it is possible!

Step 10



- Move your thumbs to the other corner of the screen and slightly start to pull apart the touch screen from the LCD screen.
- Carefully peel the touch screen away from the LCD screen.
- Now you should have both the touch screen and LCD screen detached from one another.

To reassemble your device, follow these instructions in reverse order.