



Lenovo ThinkPad X1 Extreme SSD Replacement

This guide will lead you through the steps to...

Written By: Addy Botao Liu



INTRODUCTION

This guide will lead you through the steps to replace the SSD card on the Lenovo ThinkPad X1 Extreme Generation 1. The SSD card, or solid-state drive, acts as extra storage for the device, however, oftentimes the SSD can wear out, or run slower with age.

The steps to replace the SSD card are simple, the hardest part being keeping track of all the screws while taking apart the device.

It is important to remember to turn off the device while replacing the SSD card.



TOOLS:

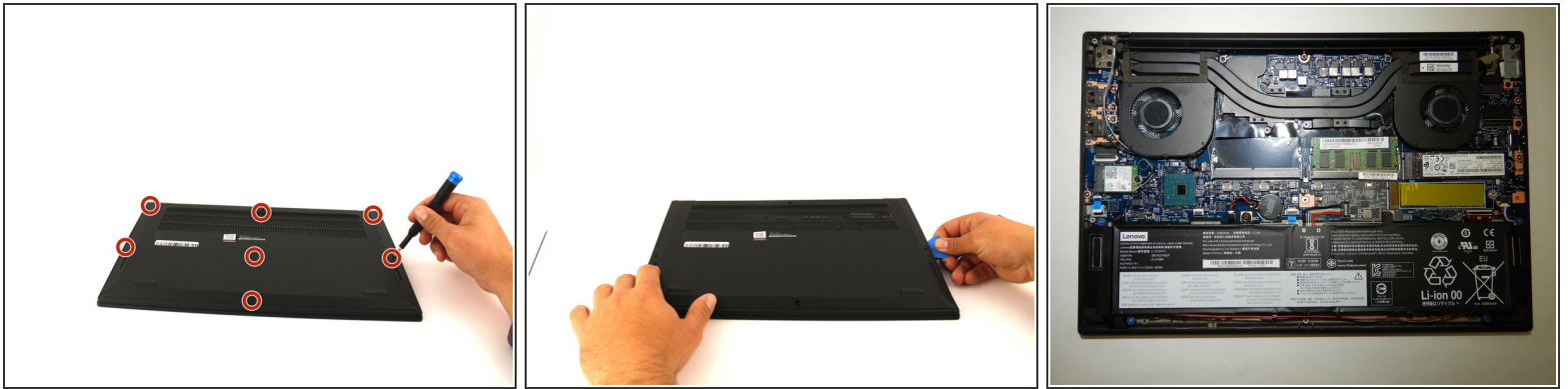
- [Phillips #00 Screwdriver](#) (1)
- [iFixit Opening Tool](#) (1)
- [iFixit Opening Picks \(Set of 6\)](#) (1)



PARTS:

- [Crucial P3 NVMe PCIe M.2 2280SS SSD - solid performance, switching from HDD or SATA to NVMe™](#) (1)
- [Crucial P3 Plus NVMe PCIe M.2 2280SS SSD - fast Gen4 NVMe™ storage for data-intensive applications](#) (1)
- [Crucial P5 Plus NVMe PCIe M.2 2280SS SSD - professionals, creatives, and hardcore gamers](#) (1)

Step 1 — Back Cover



⚠ Power off and unplug your device before you begin.

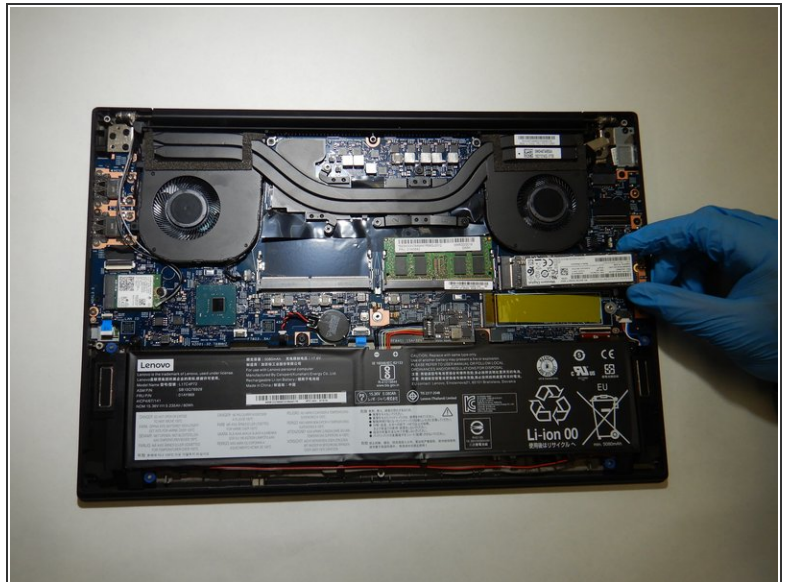
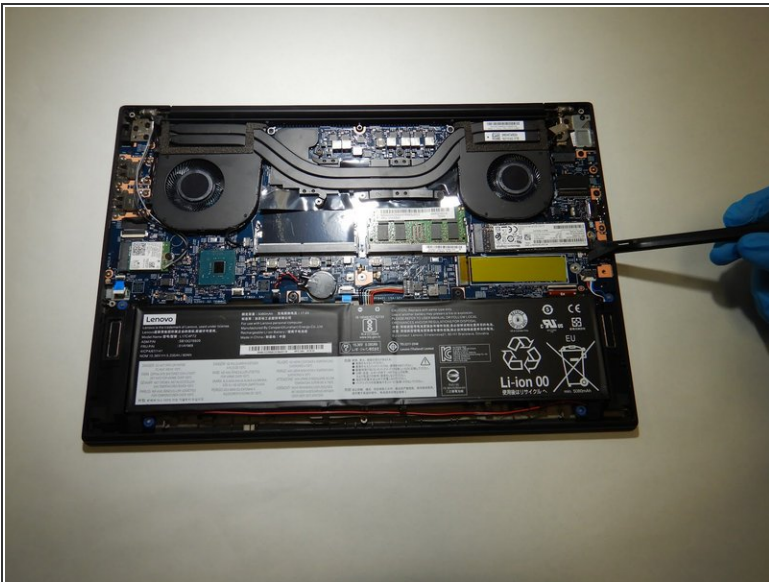
- Orient the laptop so that it is bottom up, and the trackpad is closest to you.
- Unscrew the seven captive screws with a Phillips #00 screwdriver.
 - ⓘ These screws will loosen, but stay attached to the cover. Do not attempt to completely remove them.
- Slide a blue opening pick in the gap between the bottom panel and chassis, and pry off the one clip on each side.
- Remove the back cover from the device.

Step 2 — SSD



- Using the Phillips #00 screwdriver, remove the single screw securing the SSD to the motherboard.

Step 3



- Using the opening tool, pop out the SSD card and remove it from the device.

To reassemble your device, follow these instructions in reverse order.

This document was generated on 2022-11-22 05:49:34 AM (MST).