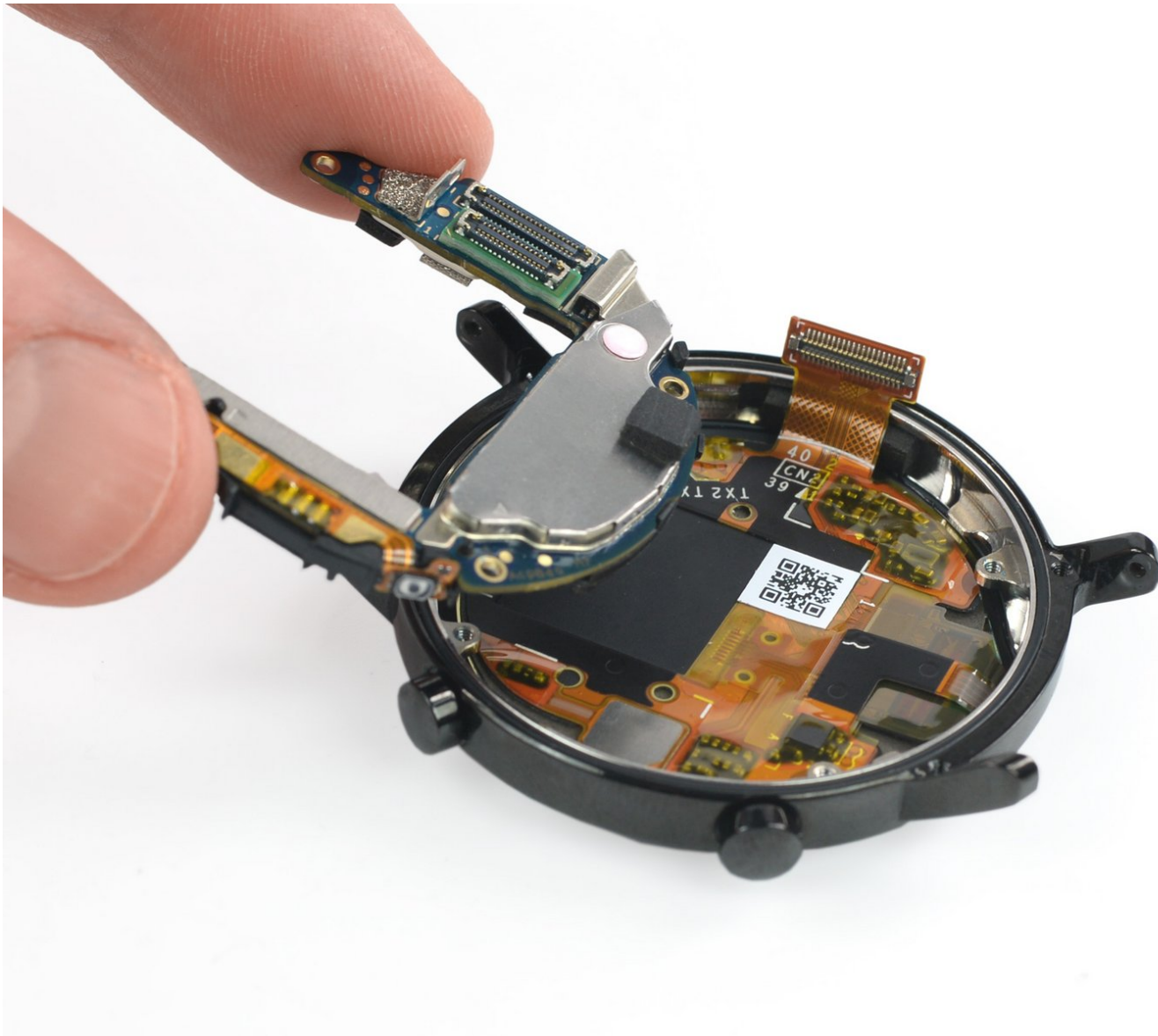




# Huawei Watch GT 2 (42 mm) Motherboard Replacement

Use this guide to replace the motherboard in...

Written By: Adriana Zwink



# INTRODUCTION

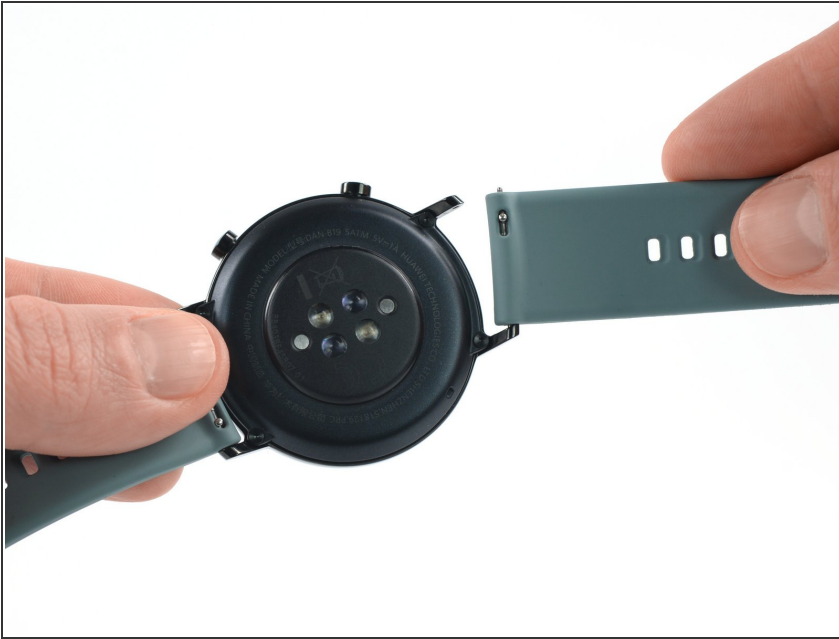
Use this guide to replace the motherboard in your Huawei Watch GT 2 (42 mm).



## TOOLS:

- [T2 Torx Screwdriver](#) (1)
  - [ESD Safe Tweezers Blunt Nose](#) (1)
  - [iFixit Opening Tool](#) (1)
  - [iFixit Opening Picks \(Set of 6\)](#) (1)
  - [Spudger](#) (1)
  - [Phillips #00 Screwdriver](#) (1)
-

## Step 1 — Remove the watch band



- Before starting the repairs, take your watch off the charger and power it down.
- Remove the watch band.

## Step 2 — Unfasten the screws



- Use a T2 Torx screwdriver to remove the four 3.6 mm screws securing the back cover assembly.

### Step 3 — Pry up the back cover assembly



- Insert an opening tool in the seam on the top edge between the back cover assembly and the watch case.
- Use the opening tool to pry up the back cover assembly of your Huawei Watch GT 2 (42 mm).

**⚠ Don't fully remove the back cover assembly just yet. It's still connected to the motherboard.**

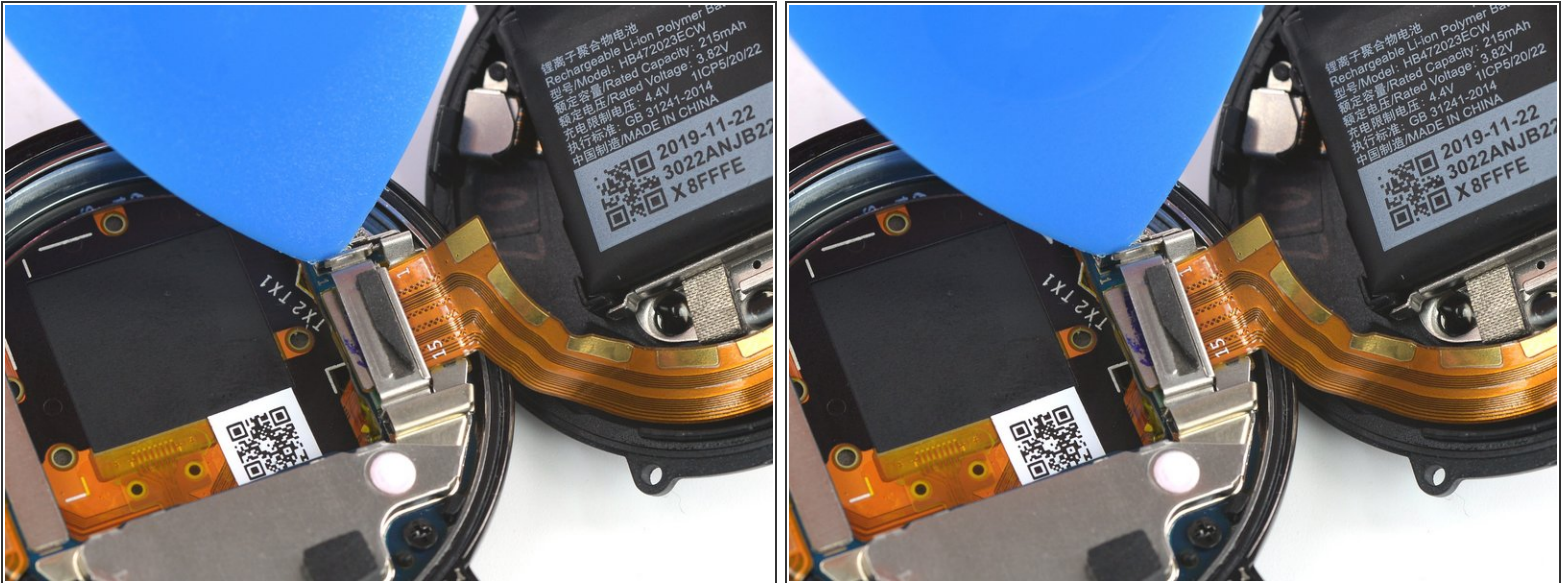
### Step 4 — Lift the back cover assembly




- Carefully swing the back cover assembly open to an upward position.



## Step 5 — Unhinge the metal shield



-  The metal shield is held in place [by a clip](#).
- Insert an opening pick in the gap between the metal shield and the shield bracket on the motherboard.
  - Push the opening pick slightly downwards to unhinge the metal shield.

## Step 6 — Remove the metal shield



- Remove the metal shield.

## Step 7 — Disconnect the back cover assembly



- Use a spudger to disconnect the back cover assembly.

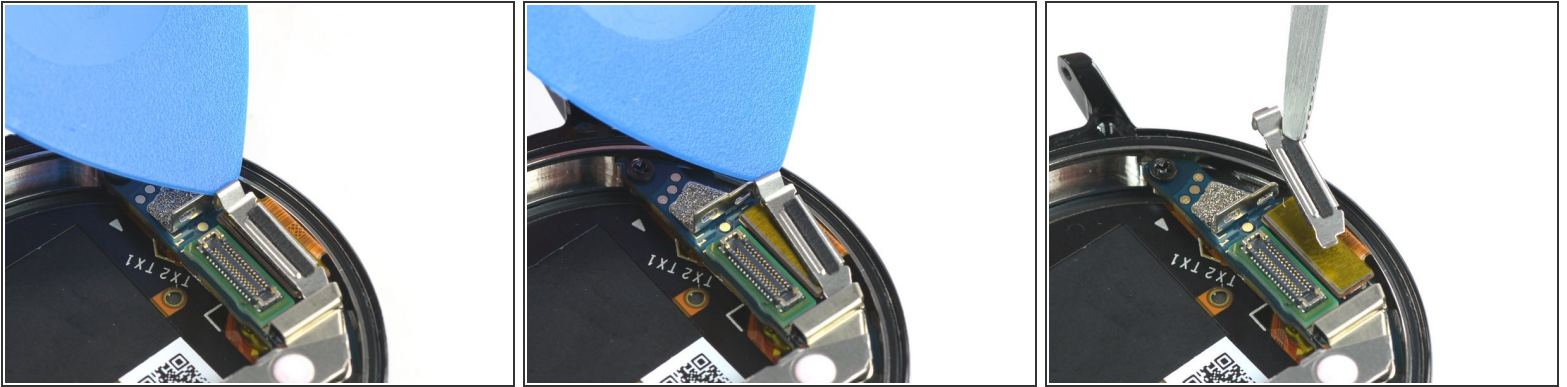
## Step 8 — Separate the back cover assembly



- Separate the back cover assembly from the watch case.



## Step 9



- Insert an opening pick in the gap between the metal shield and the shield bracket on the motherboard.
- Push the opening pick slightly downwards to unhinge the metal shield.
- Remove the metal shield.

## Step 10



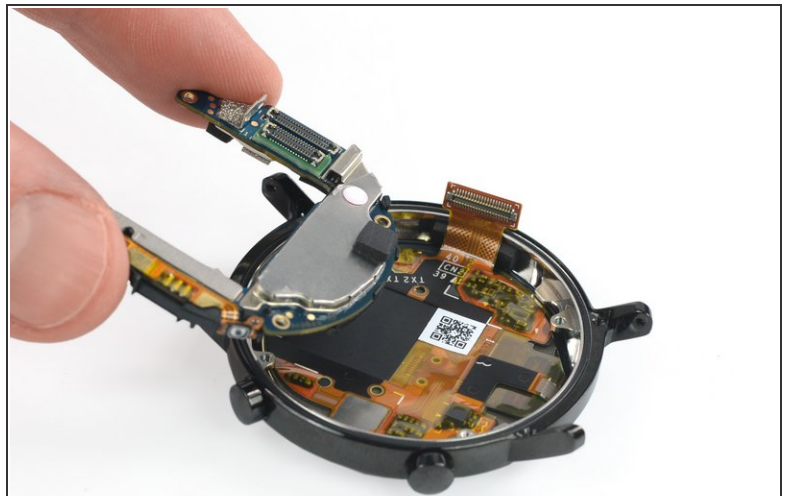
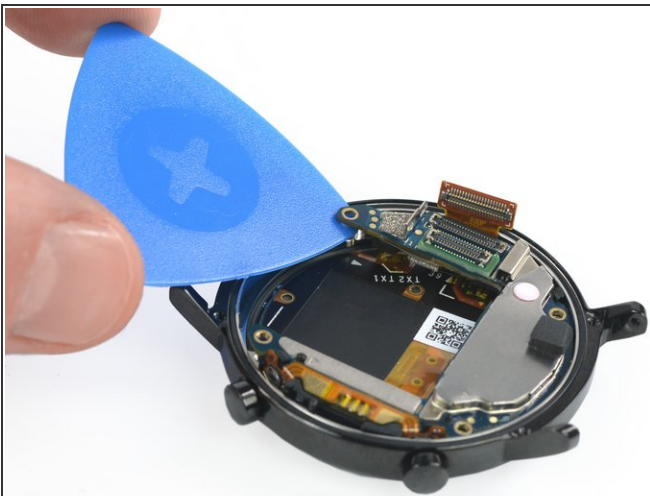
- Use the pointed end of a spudger to disconnect the display flex cable from the motherboard.

## Step 11



- Use a Phillips #00 screwdriver to remove the four 2.3 mm screws securing the motherboard.

## Step 12



- Use an opening pick to pry up the motherboard.
- Remove the motherboard.



To reassemble your device, follow these instructions in reverse order.

Take your e-waste to an [R2 or e-Stewards certified recycler](#).

Repair didn't go as planned? Try some [basic troubleshooting](#), or ask our [Answers community](#) for help.