



How to Open the Huawei Watch GT 2 (42 mm)

Use this guide to open your Huawei Watch GT 2...

Written By: Adriana Zwink



INTRODUCTION

Use this guide to open your Huawei Watch GT 2 (42 mm) for repairs.



TOOLS:

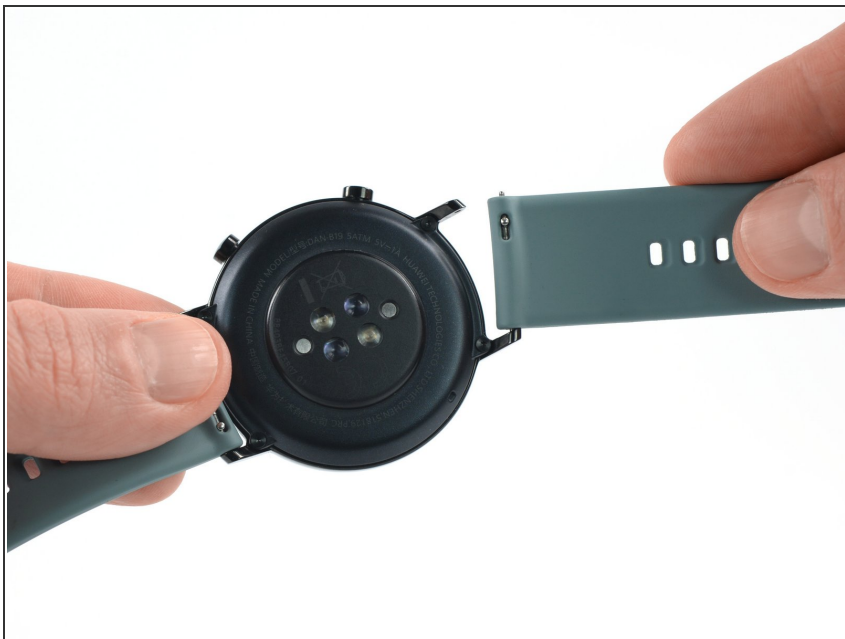
- [iFixit Opening Tool](#) (1)
- [T2 Torx Screwdriver](#) (1)



PARTS:

- [Huawei Watch GT 2 \(42 mm\) Screen](#) (1)

Step 1 — Remove the watch band



- Before starting the repairs, take your watch off the charger and power it down.
- Remove the watch band.

Step 2 — Unfasten the screws



- Use a T2 Torx screwdriver to remove the four 3.6 mm screws securing the back cover assembly.

Step 3 — Pry up the back cover assembly



- Insert an opening tool in the seam on the top edge between the back cover assembly and the watch case.
- Use the opening tool to pry up the back cover assembly of your Huawei Watch GT 2 (42 mm).

⚠ Don't fully remove the back cover assembly just yet. It's still connected to the motherboard.

Step 4 — Lift the back cover assembly



- Carefully swing the back cover assembly open to an upward position.

To reassemble your Huawei Watch GT 2 (42 mm), follow these instructions in reverse order.

Take your e-waste to an [R2 or e-Stewards certified recycler](#).

Opening didn't go as planned? Try some [basic troubleshooting](#), or ask our [Answers community](#) for troubleshooting help.