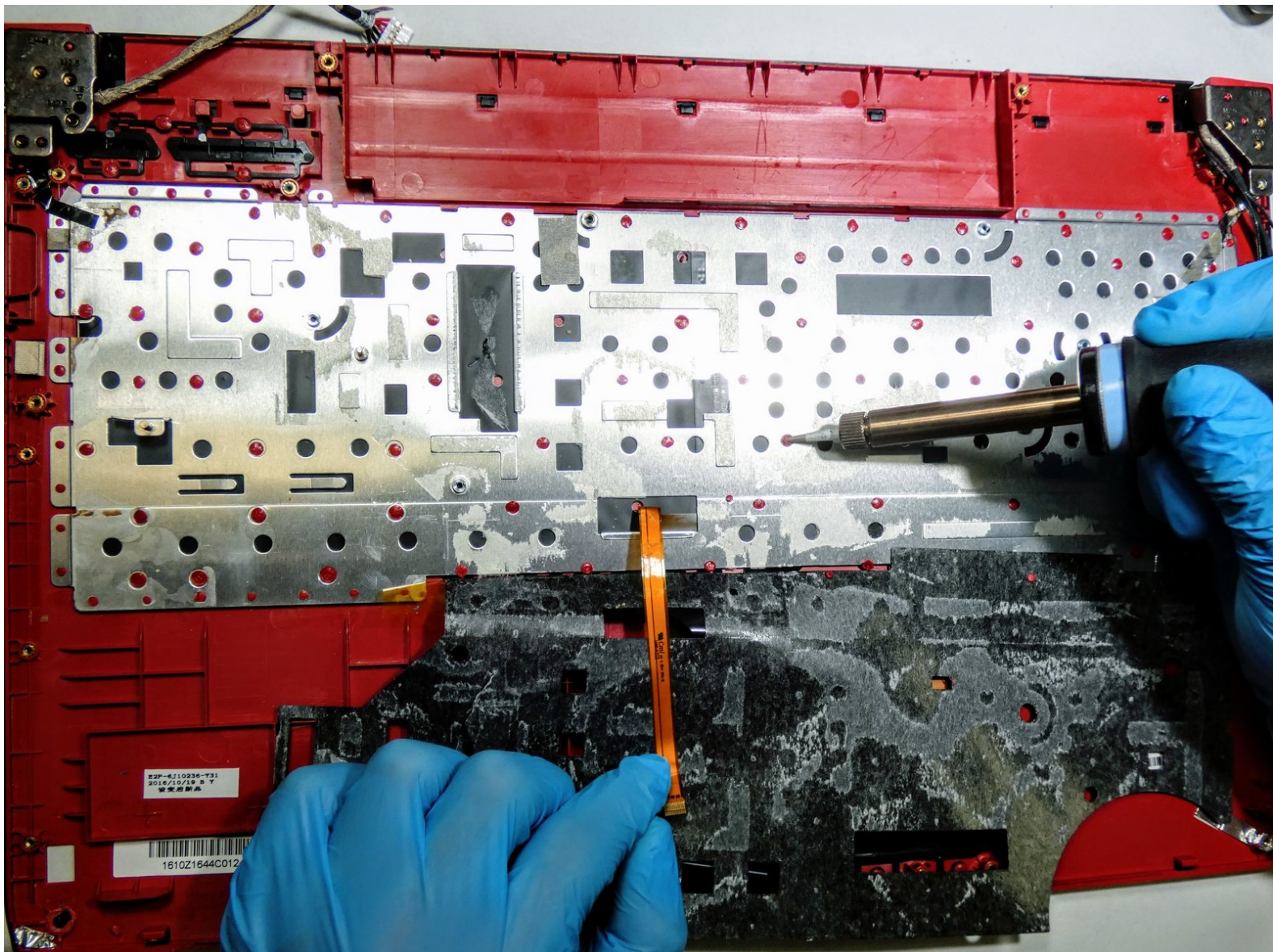




MSI GP62MVR 6RF Leopard Pro Keyboard Replacement

Use this guide to replace the keyboard in the MSI GP62MVR 6RF Leopard Pro laptop.

Written By: Nicholas Johnson



INTRODUCTION

Even though it is highly unlikely that your MSI GP62MVR 6RF Leopard Pro keyboard will completely fail, even just one broken or damaged key can cause enough problems as to be worth the trouble of replacing the entire keyboard. For this task, you will need a Philips #0 screwdriver, a Jimmy tool, a prying tool, a soldering iron, and a pair of latex gloves. No special skills are required. Although the latex gloves are not required, we recommend them to avert the hazard of electrical shock or the leaving of residue on sensitive electrical components on the motherboard.

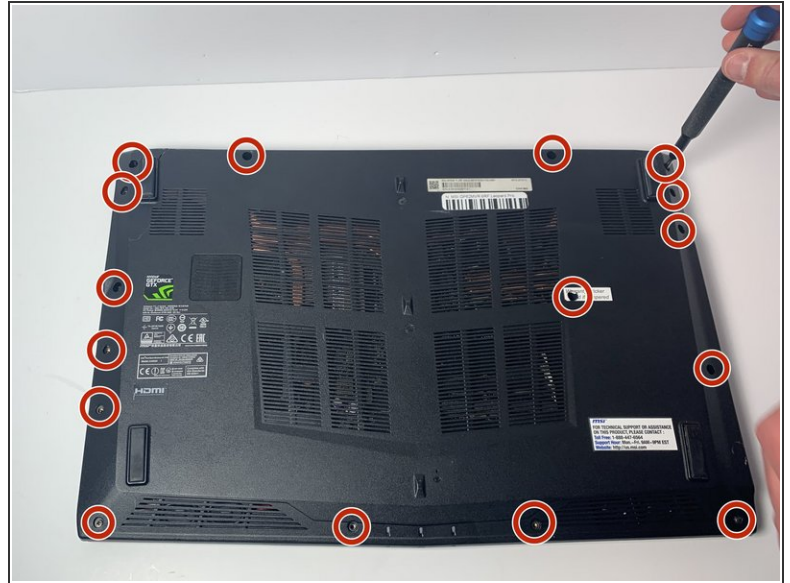
For more information on soldering and desoldering connections, please visit the [How to Solder and Desolder Connections guide](#).



TOOLS:

- [Jimmy](#) (1)
 - [Phillips #0 Screwdriver](#) (1)
 - [Soldering Iron](#) (1)
 - [Metal Spudger](#) (1)
-

Step 1 — Bottom Cover



- Place the laptop upside down.
- Remove the sixteen 5.5 mm screws with a Phillips #0 screwdriver.

Step 2



- Use the Jimmy tool to evenly pry loose the bottom cover.
- Ensure that all sides are detached from the plastic hinging before attempting to remove the bottom cover.

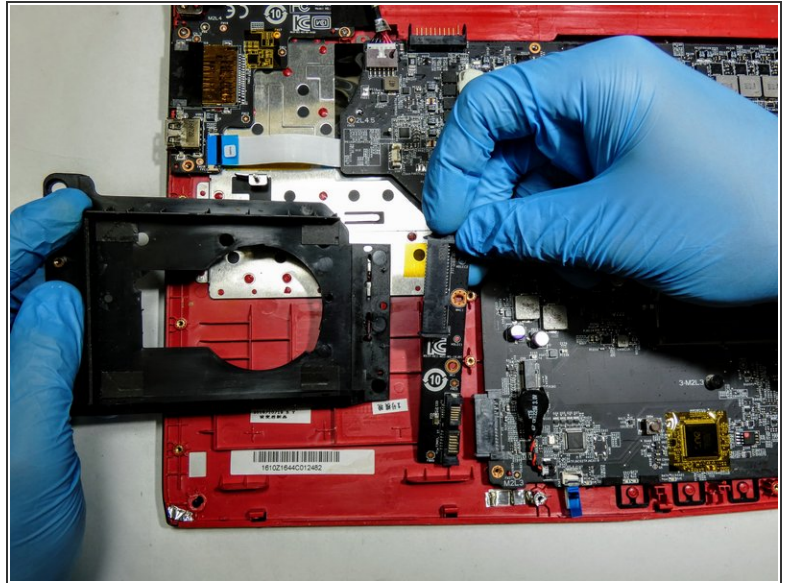
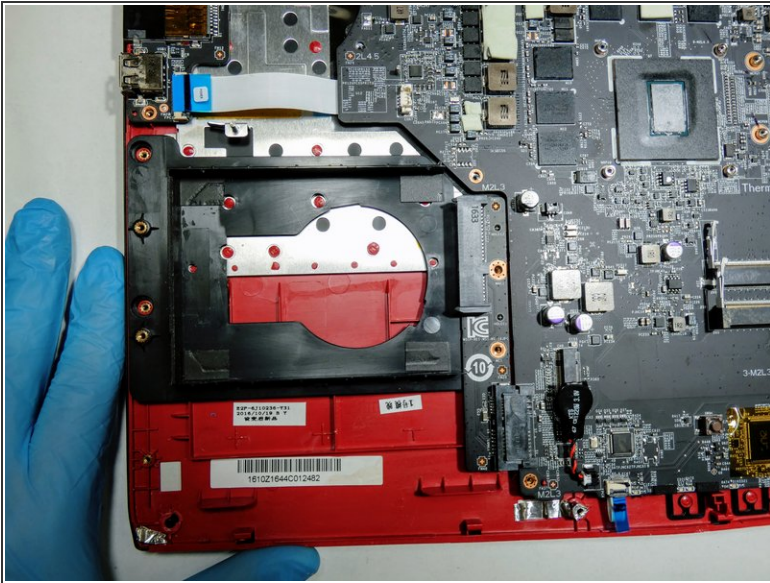
Step 3



- Remove the back cover.

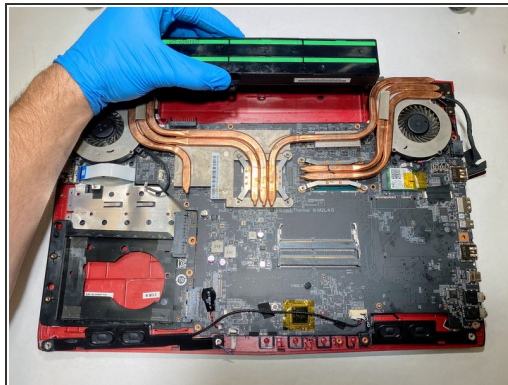
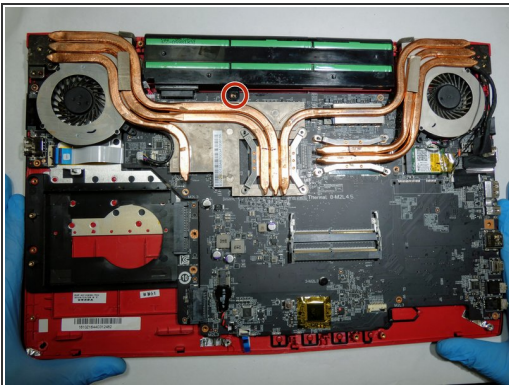
⚠ Touching circuitry could damage components or result in personal shock; it is recommended that you now wear latex gloves to prevent both issues.

Step 4 — Hard Drive



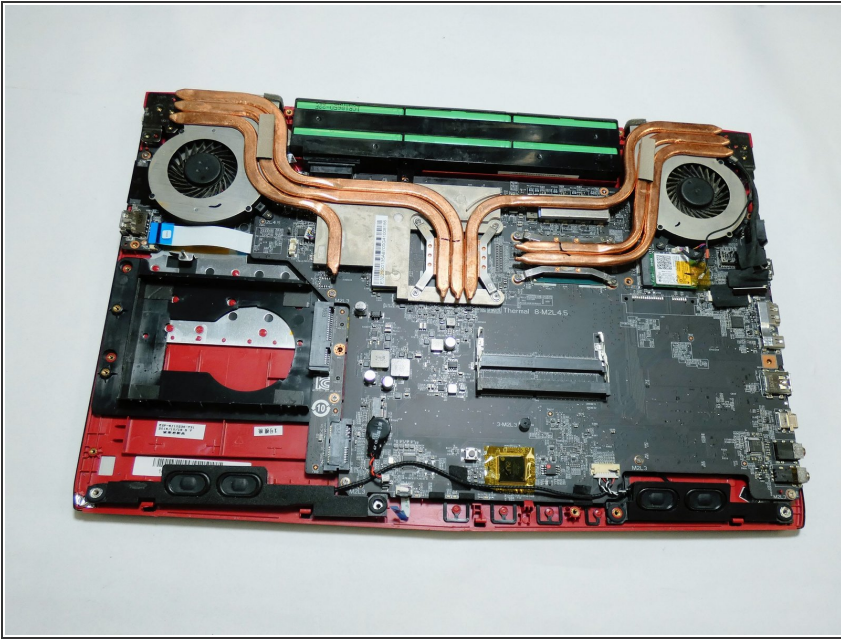
- Disconnect the hard drive and remove the hard drive from the device.

Step 5 — Battery



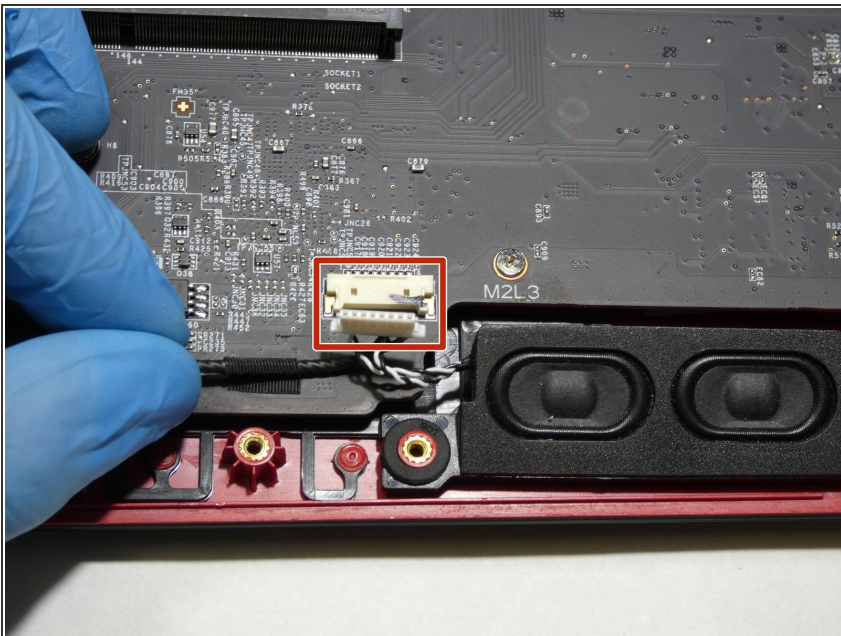
- Using a Phillips #0 Screwdriver, remove the single 5.5 mm screw fastening the battery to the body of the computer.
- Remove the battery from the device.

Step 6 — Speakers



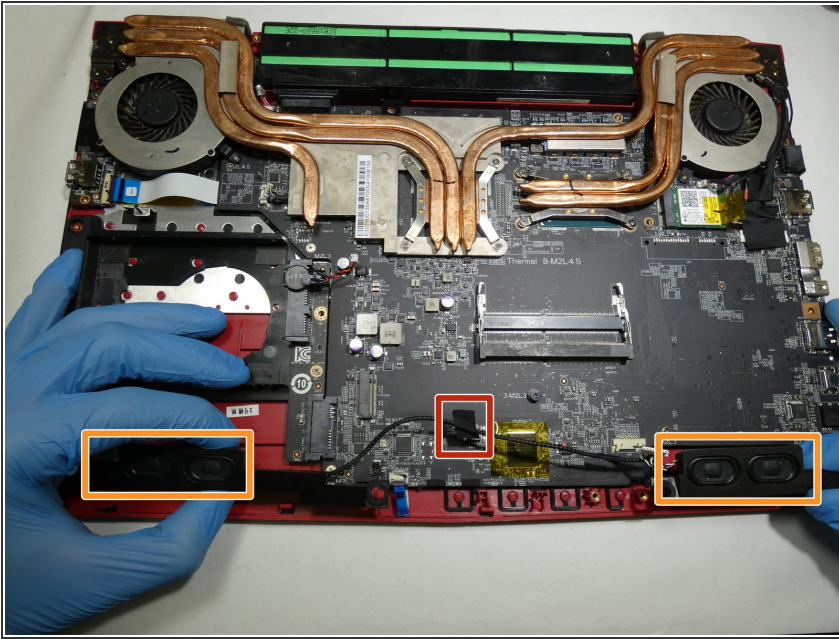
- Reorient the computer, if necessary, with a 180 degree turn so that the speakers face you.

Step 7



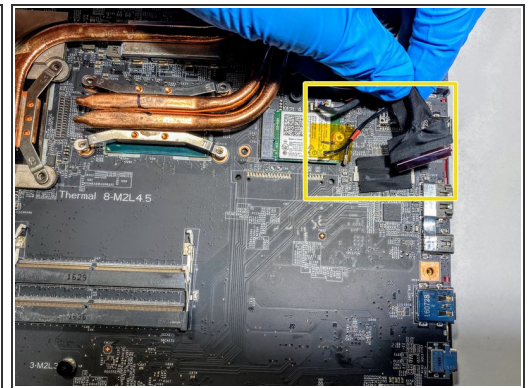
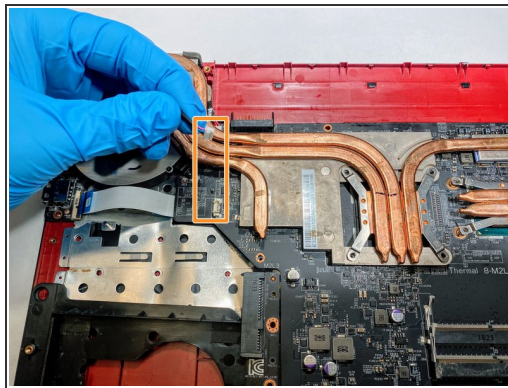
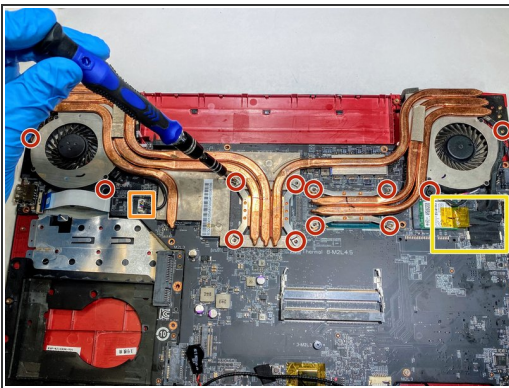
- On the front panel near the right speaker, there is a connection from the motherboard to the speakers.
- Detach the white and black wiring from the clip.

Step 8



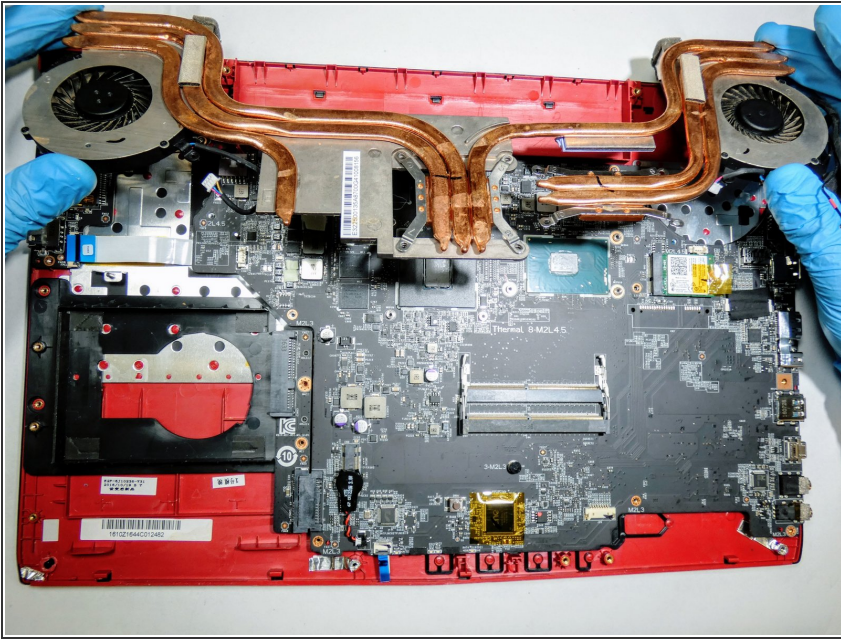
- Peel back the electrical tape holding the speaker wire in place.
- Remove the speakers from the front panel, pulling upward.
- ⓘ Note that the screws holding the two speakers down were already removed during the bottom cover removal.

Step 9 — Heatsink



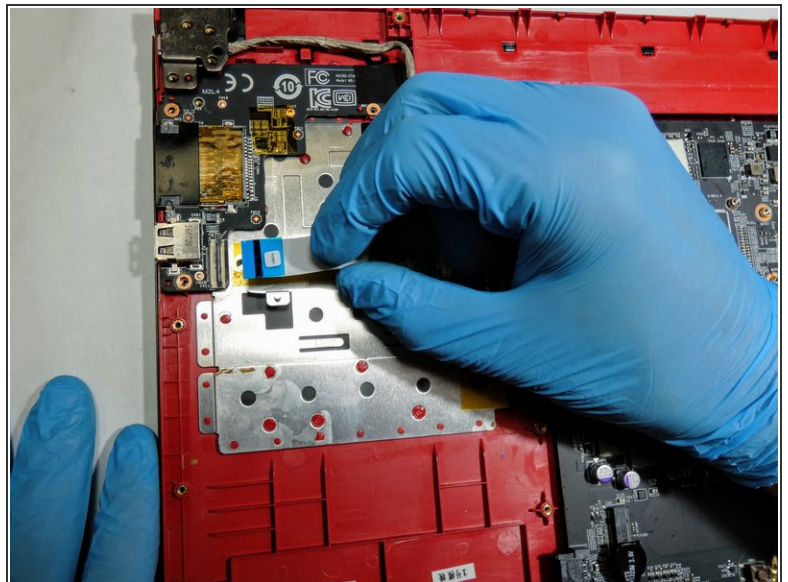
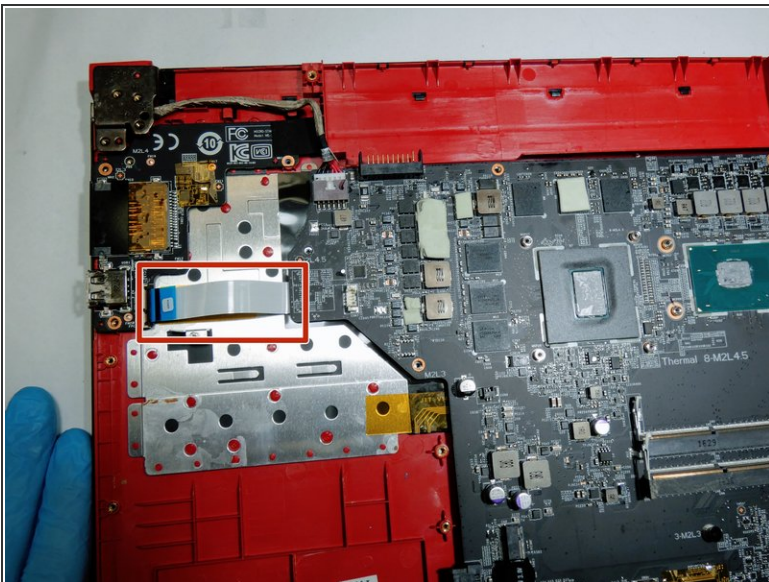
- Using a Phillips #0 screwdriver, remove twelve 4.5 mm screws fastening the heat sink to the motherboard.
- Unclip the red, blue, and black intertwined wire gently from the left side of the motherboard.
- Detach the black and red wire from the right side of the motherboard, as well as peel away the black tape connecting the large black wire to the motherboard.

Step 10



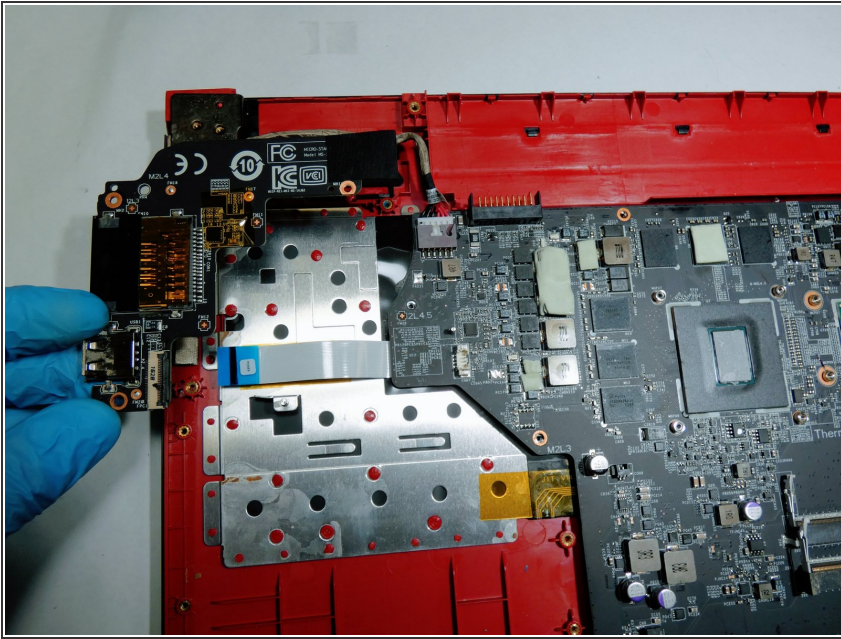
- Remove the heatsink from the device.

Step 11 — USB Port



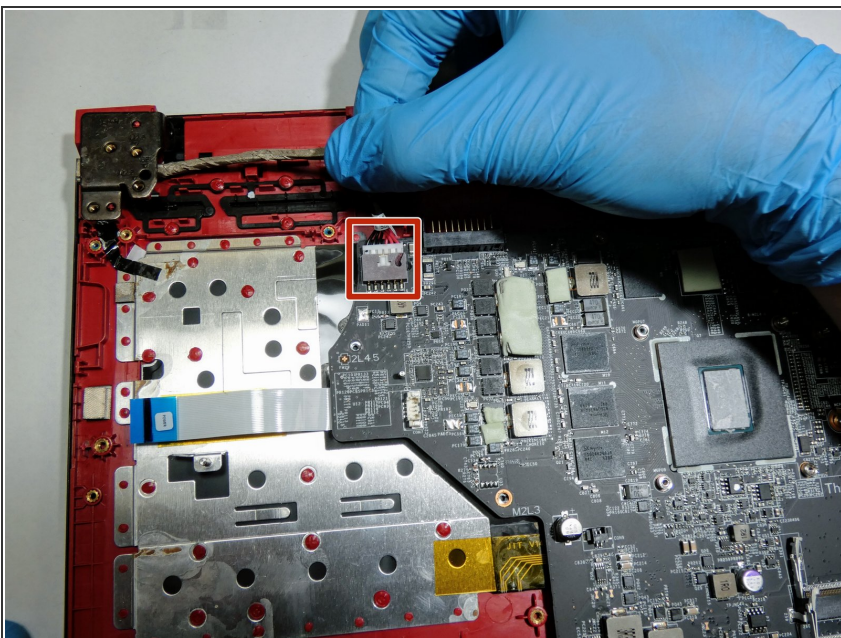
- At the middle-top right of the motherboard, there is a ribbon wire connection to the USB port.
- Detach the white and blue motherboard ribbon from the USB port.

Step 12



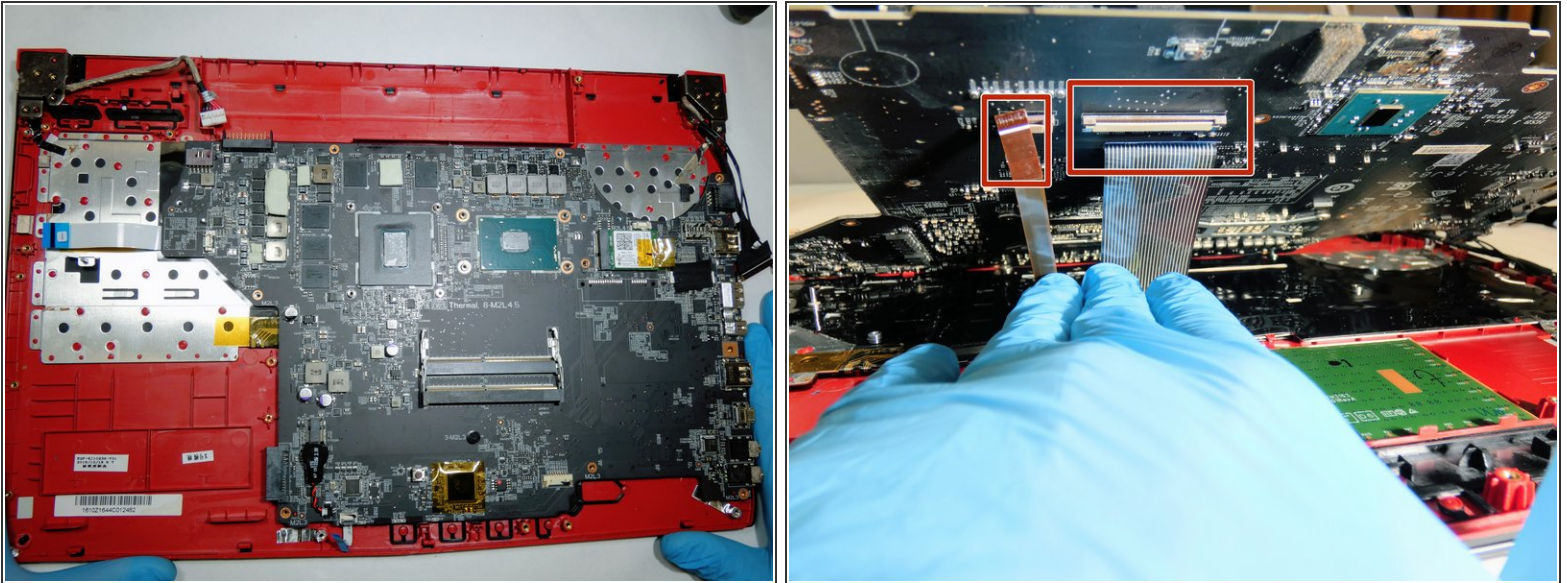
- Insert wisdom here.

Step 13 — Motherboard



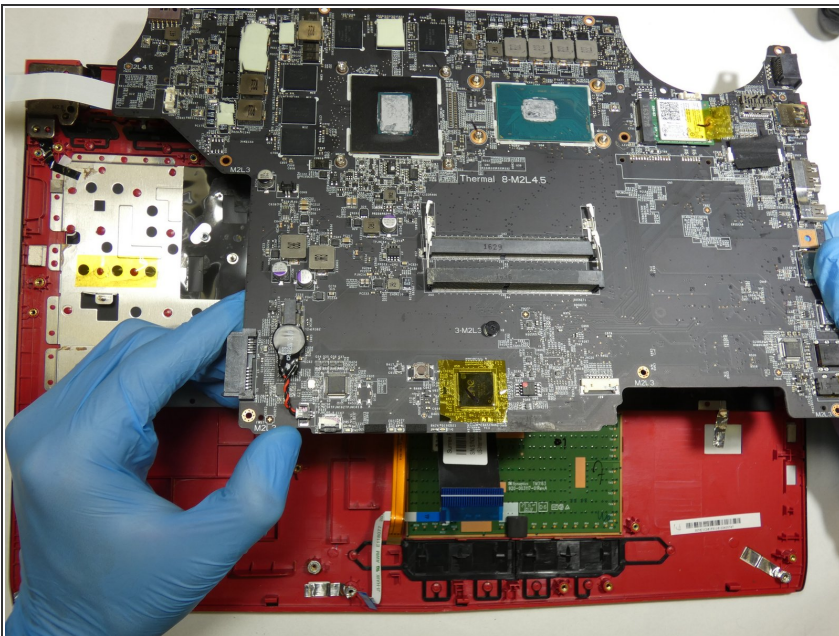
- At the top right of the motherboard, there is a wired connection to the charging port.
- Disconnect the grey charger wire from its clip on the motherboard.

Step 14



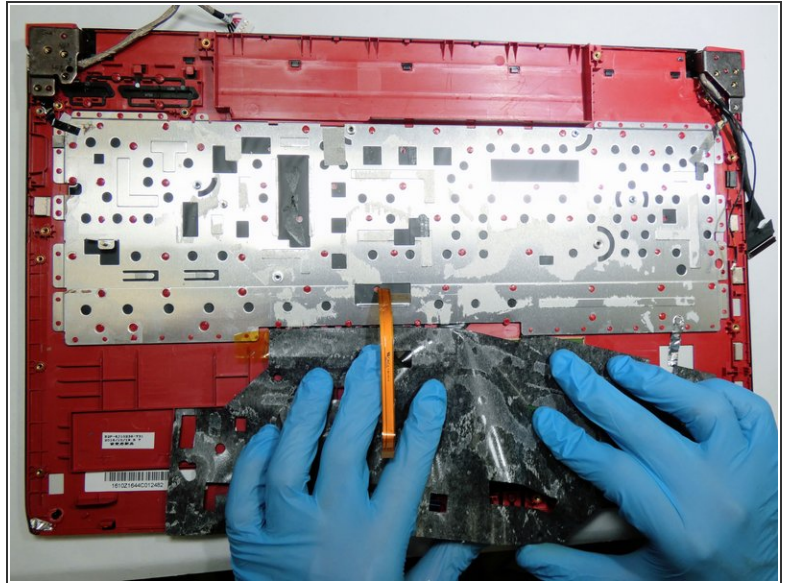
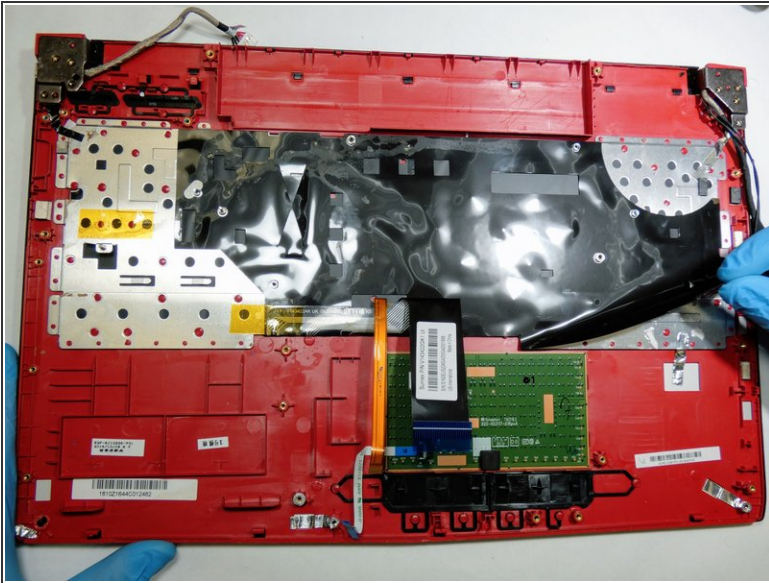
- The final two connections are located on the underside of the motherboard.
- Detach the small orange and bid grey ribbons from under the motherboard, by lifting the motherboard gently from the front.

Step 15



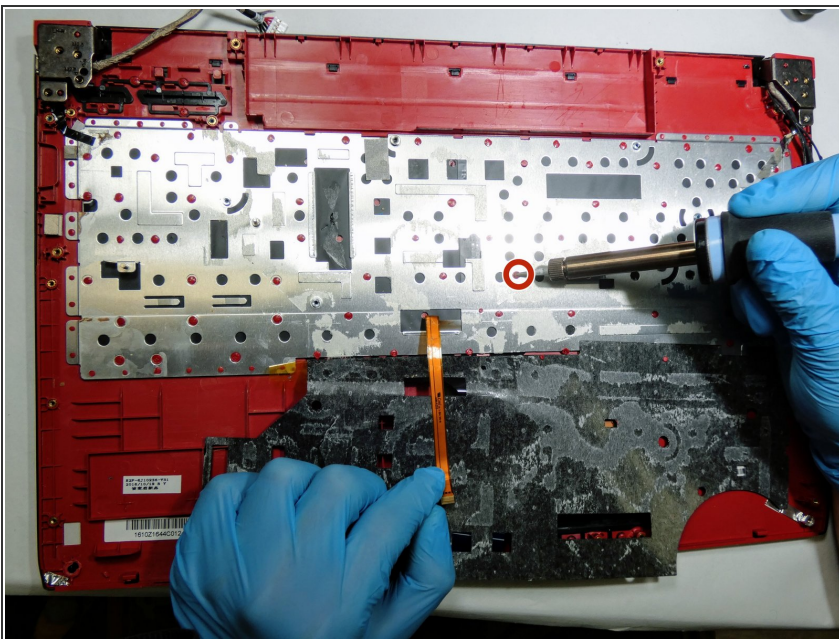
- Gently lift away the motherboard, directly upward.

Step 16 — Keyboard



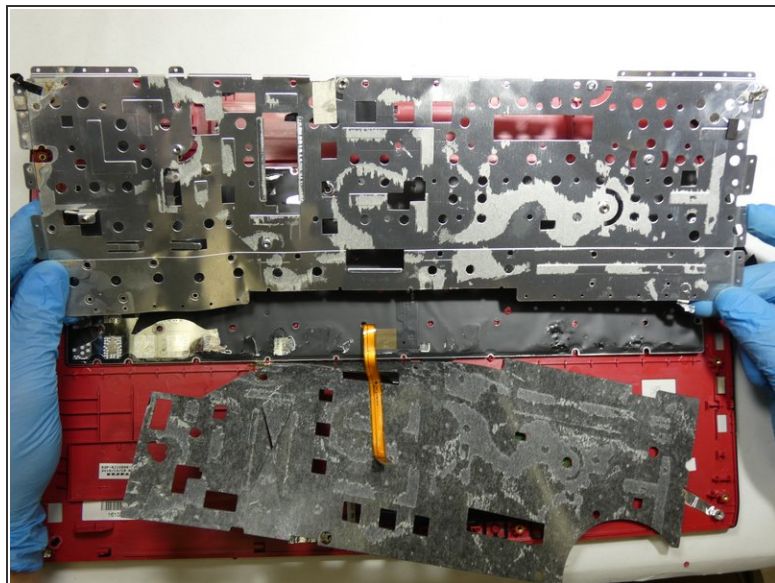
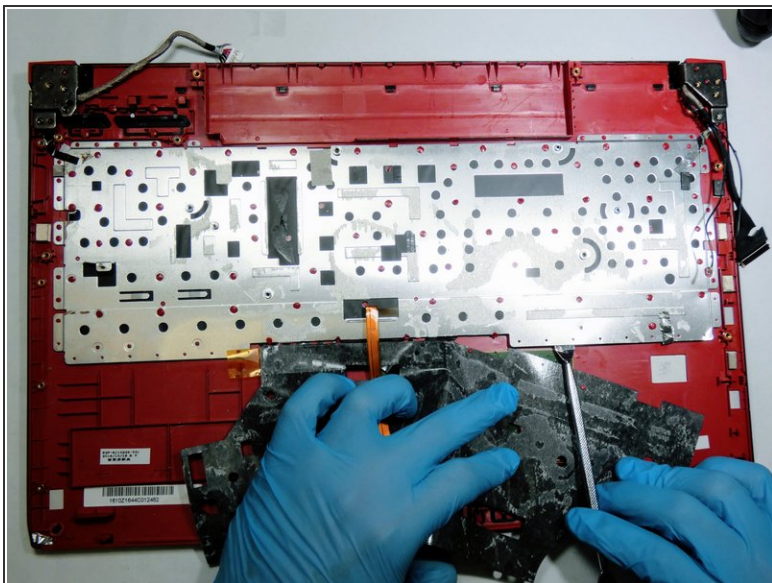
- Peel back the adhesive black lining attached to the keyboard.

Step 17



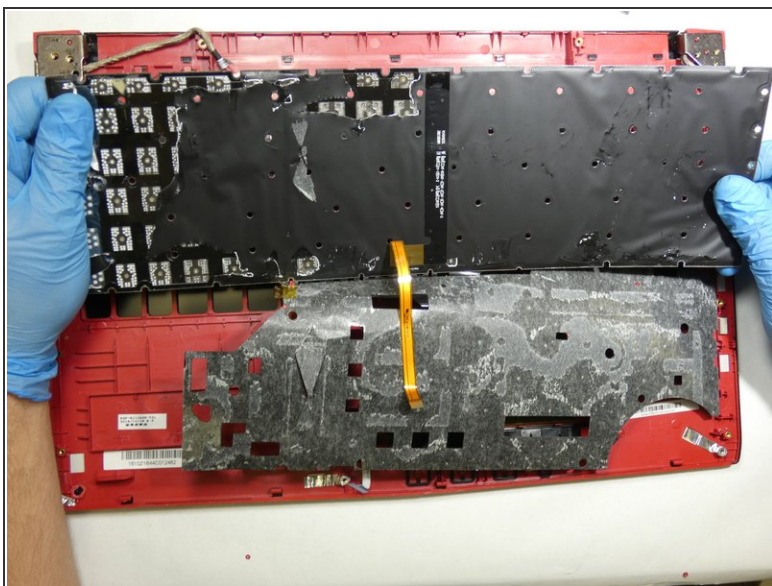
- Using a soldering iron, melt each red plastic attachment.
- ⓘ Note that although only one plastic connection is circled, all must be disconnected before removing the keyboard backing
- ⓘ Only the red plastic connections in the middle is required to be soldered; the outer connections can be undone with a prying tool.
- ⓘ For more information on soldering, please visit the [How to Solder and Desolder Connections guide](#).

Step 18



- Using a metal spudger, pry the keyboard metal backing away.

Step 19



- Remove the keyboard.

To reassemble your device, follow these instructions in reverse order.