



# Motorola Moto G7 Plus Motherboard Replacement

The Motorola G7 Plus motherboard is the heart...

Written By: Jordan Kish



# INTRODUCTION

The Motorola G7 Plus motherboard is the heart of all processes in the phone. If it is to fail, the phone will likely not be able to power itself on or perform any basic functions. This replacement guide demonstrates how to access, remove, and replace this major component with respect to other internal parts of the phone.

Before you begin, download the [Rescue and Smart Assistant](#) app to backup your device and diagnose whether your problem is software or hardware related.



## TOOLS:

[T5 Torx Screwdriver](#) (1)

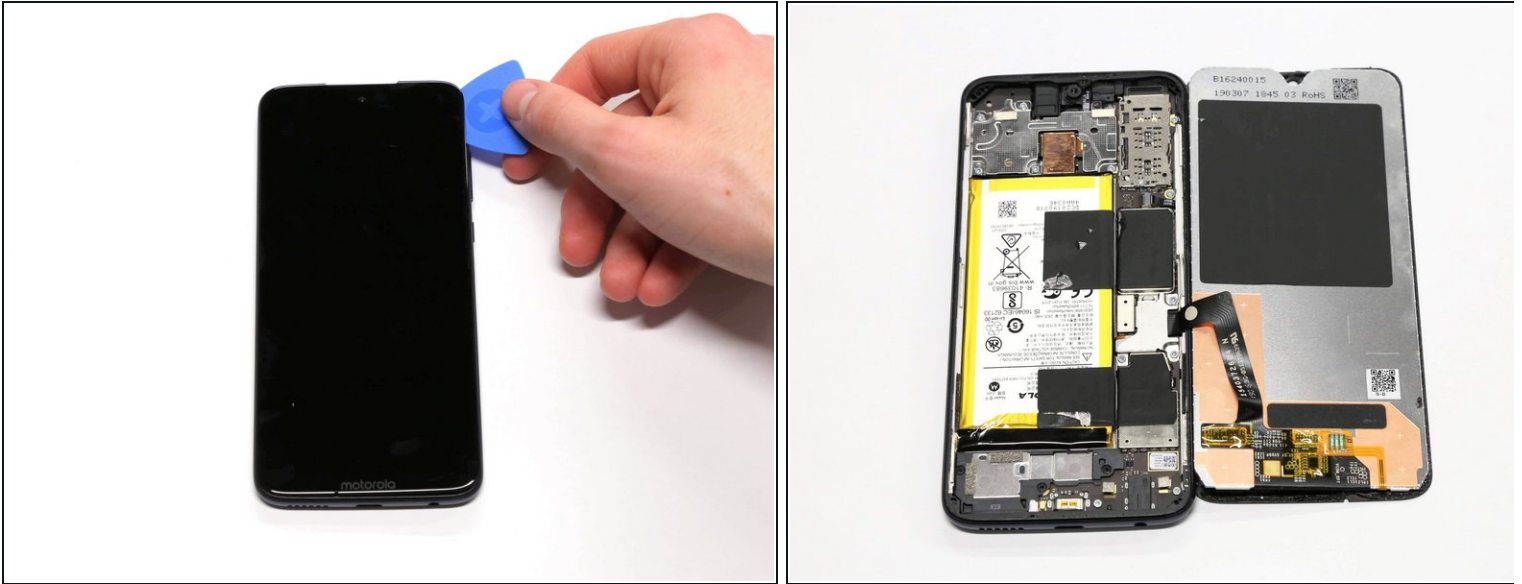
[iFixit Opening Picks \(Set of 6\)](#) (1)

[Spudger](#) (1)

[iFixit Opening Tool](#) (1)

---

## Step 1 — Remove the Screen



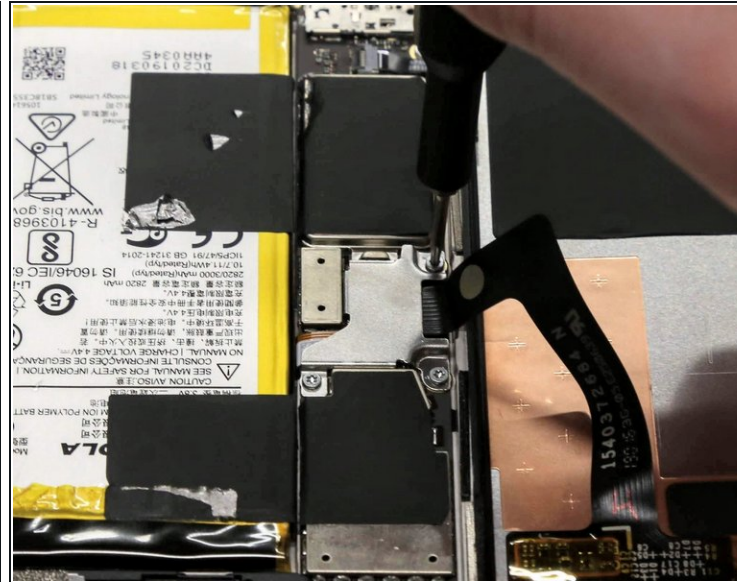
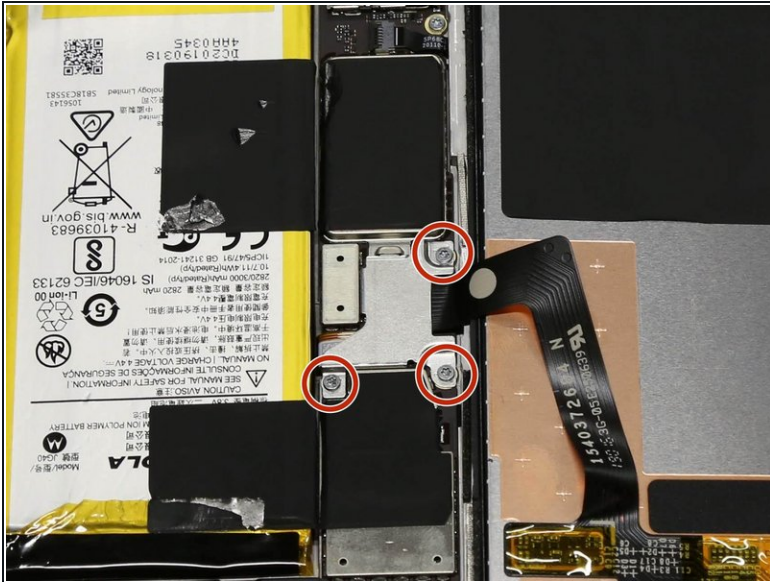
- Insert an opening tool pick under the screen, starting at the top of the phone.
- Slide the pick around the entire perimeter of the display to break the adhesive.

**⚠ There is a cable on the right side of the phone (the side with the volume buttons), which connects the screen to the rest of the phone. Be careful not to damage this cable.**

- Once enough adhesive has been removed, you should be able to separate the screen by gently lifting it from the left side of the phone.
- ① While not necessary, applying a gentle heat to the edges of the display with a heat gun or iOpener will weaken the adhesive.

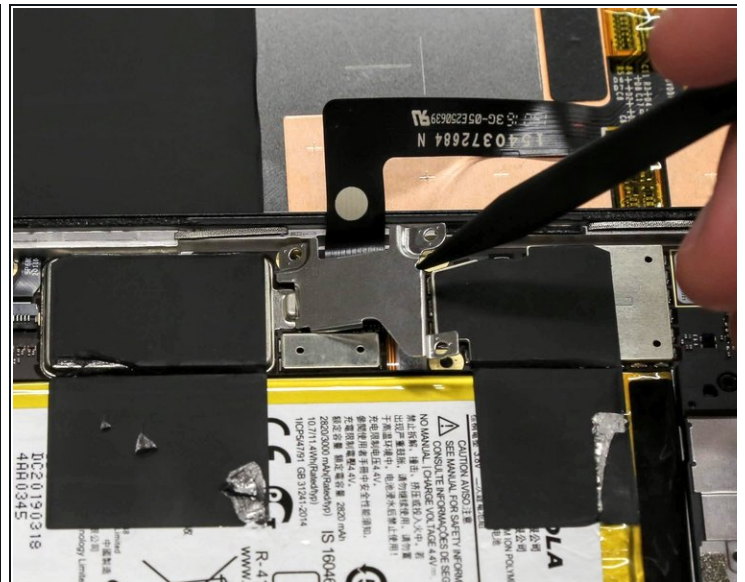
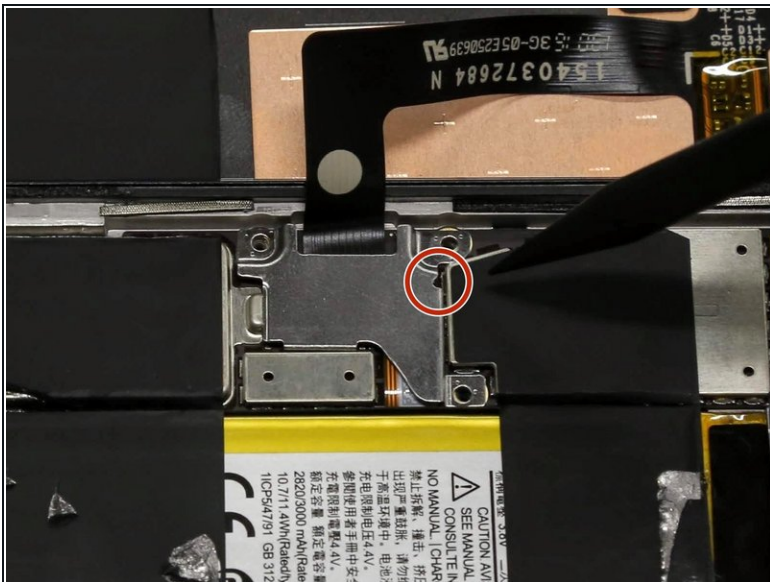


## Step 2 — Remove the Display Cable Cover



- Remove the three 2.7 mm screws that surround the base of the display cable using the Torx T5 screwdriver.
- Gently remove the metal piece that covers the base of the display cable.

## Step 3



- Use the pointed end of the spudger to lift the metal casing where circled.

## Step 4 — Separate the Display From the Phone



- Underneath this metal piece is the base of the cable. Use a spudger to vertically lift the connection out of its port.

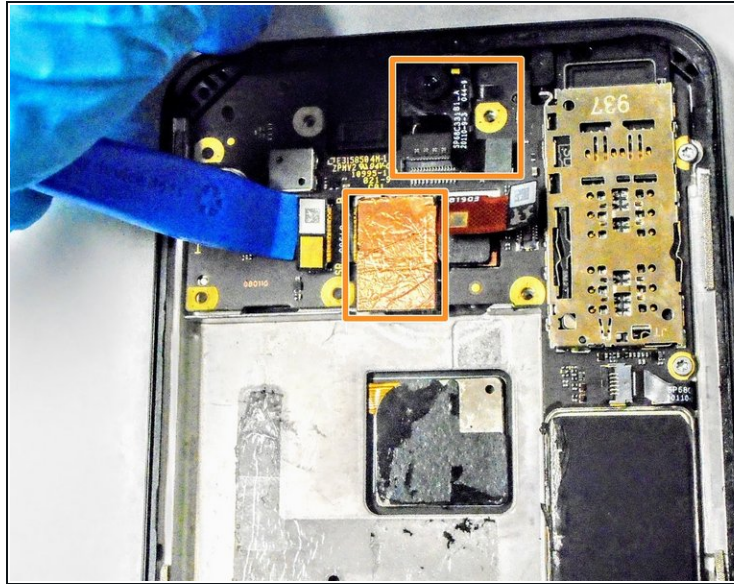
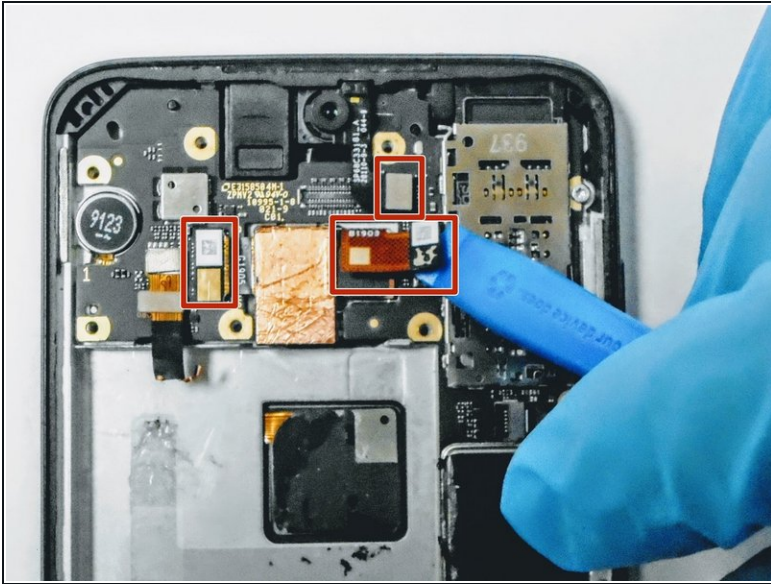
## Step 5 — Motherboard



- Remove thirteen 2.7mm screws holding the rear camera housing plate with a T5 Torx screwdriver.
- Use the opening pick or spudger to lift the plate from the motherboard.

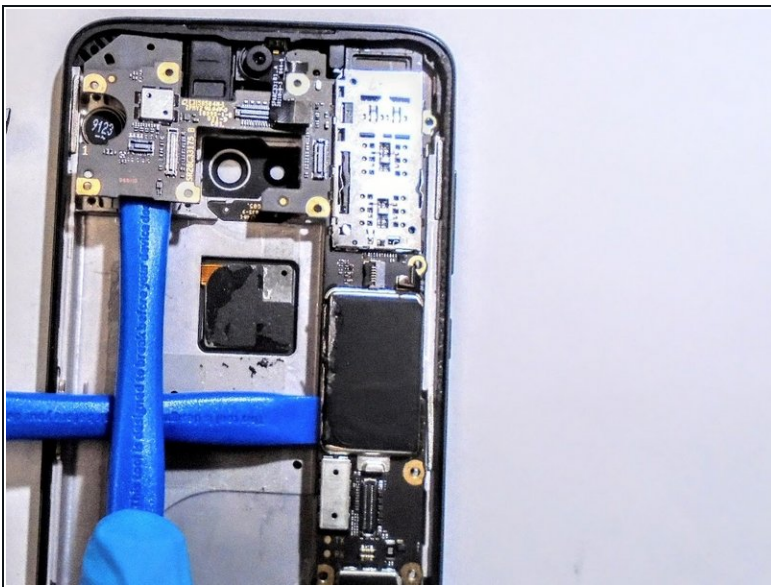


## Step 6



- Use the plastic opening tool to disconnect the three connectors from the motherboard.
- Lift the rear camera and copper plate from the board.

## Step 7



- Insert the plastic opening tool under the right and top of the motherboard, and pry it free from the body.

---

To reassemble your device, follow these instructions in reverse order.