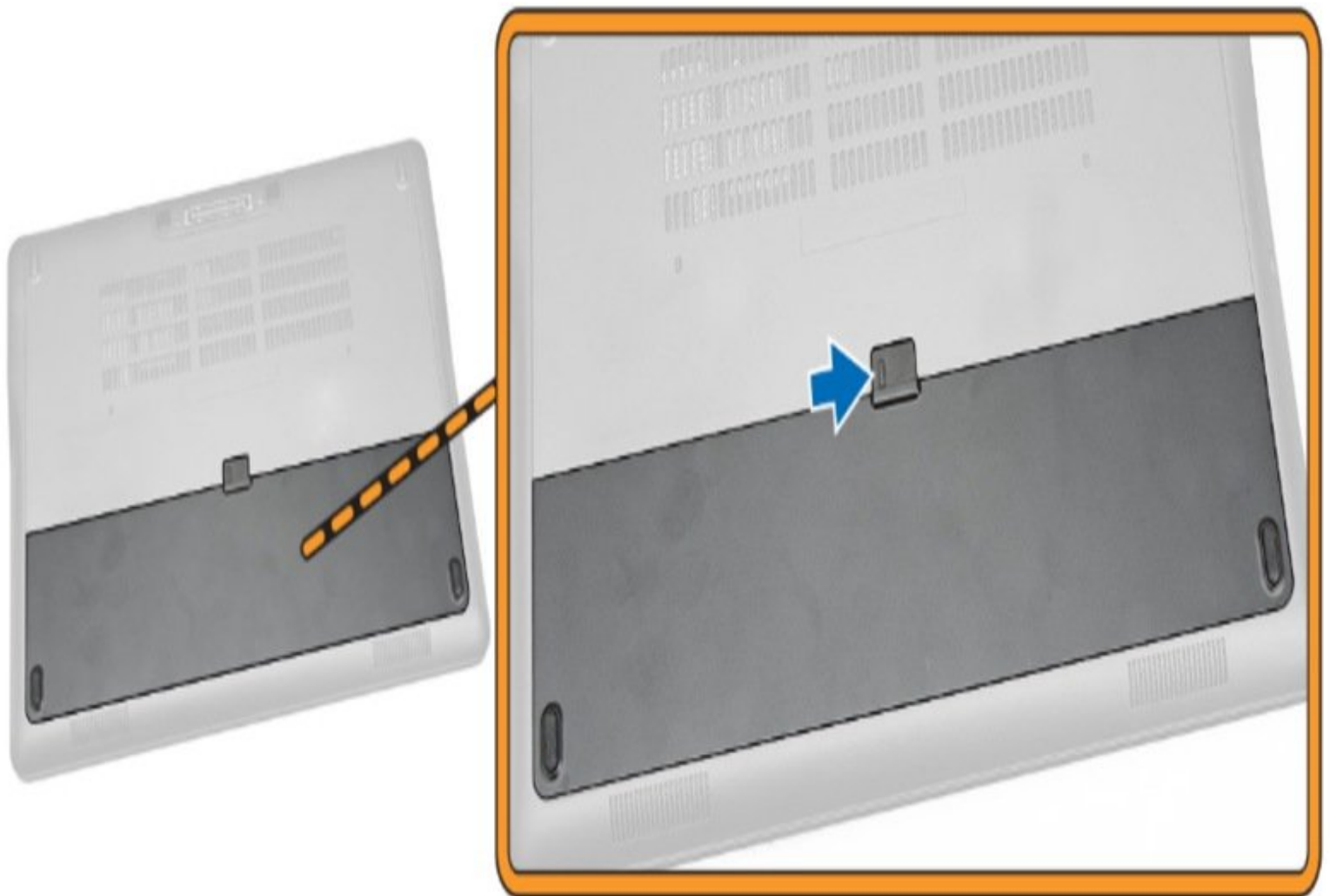




# Dell Latitude E7450 Base Cover Replacement

This guide will teach you how to install the base cover for this DELL computer.

Written By: Hezekiah Brown

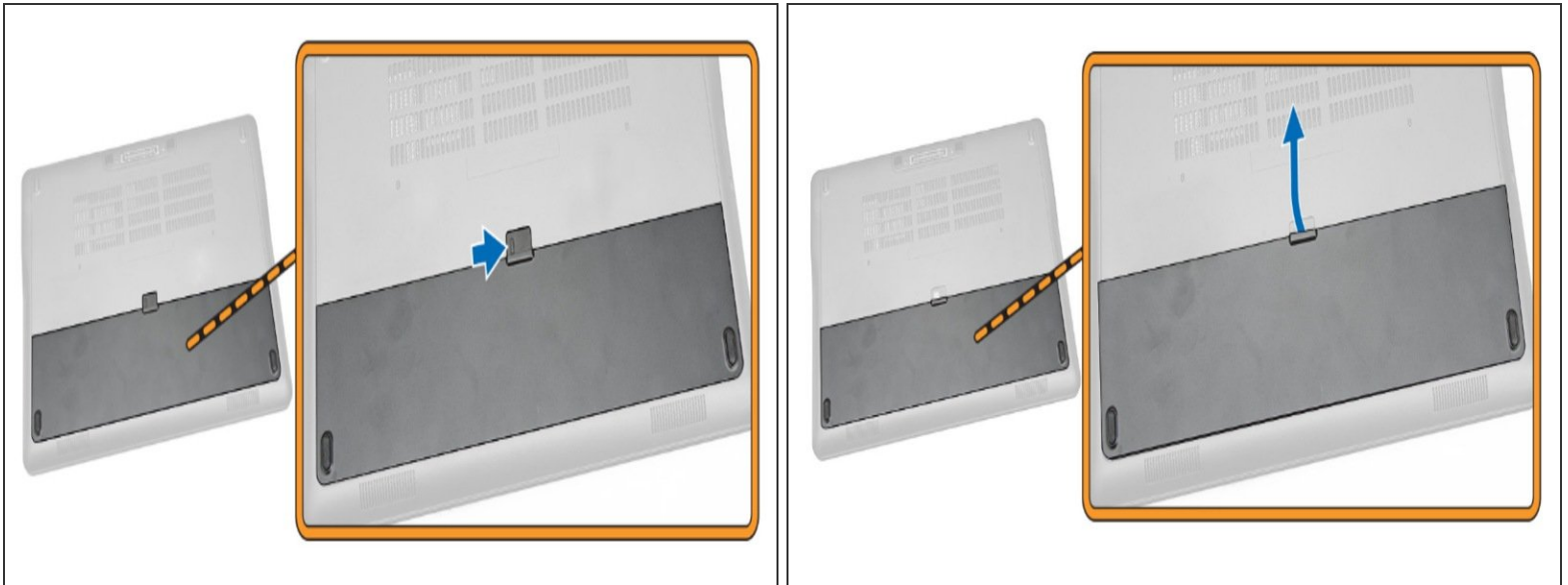




## TOOLS:

- [Phillips #0 Screwdriver](#) (1)
-

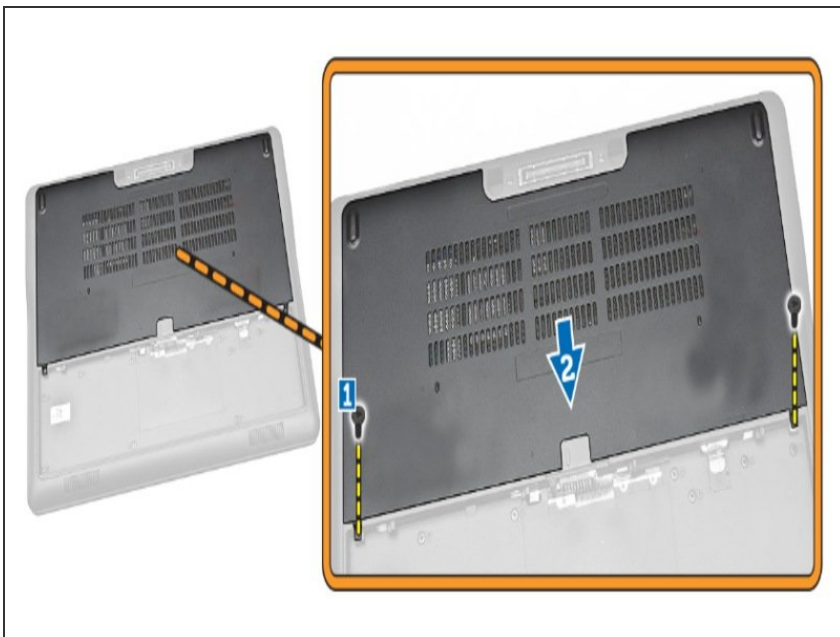
## Step 1 — Remove battery from computer



**!** Before performing this task, make sure you turn off the computer and disconnect every external drive from it, whether it's a USB drive, power charger, or wireless adapter.

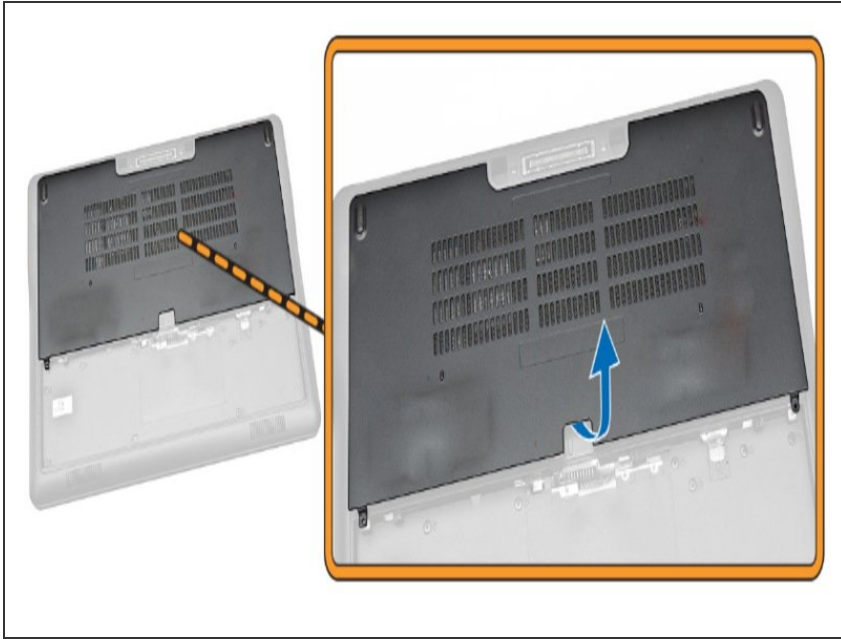
- Slide the release latch to unlock the battery.
- Remove the battery from the computer.

## Step 2 — Removing the Base Cover



- Remove the screws that secure the base cover to the computer [1].
- Slide the base cover to release it from the computer [2].

### Step 3 — Remove the base cover from the computer.



- Remove the base cover from the computer.

### Step 4 — Align base cover with screws



- Place the base cover to align with the screw holes correctly on the computer.

## Step 5 — Tighten the screws to base cover



- Tighten the screws to secure the base cover to the computer.

## Step 6 — Put back on the battery



- Install the battery back on the computer.

To reassemble your device, follow these instructions in reverse order.