



# Rapoo E6700 Keyboard Connector Port Repair

Since its considered impossible to repair Rapoo Keyboards i tried and succeeded to at least get to the component which breaks first: The USB Connector Port

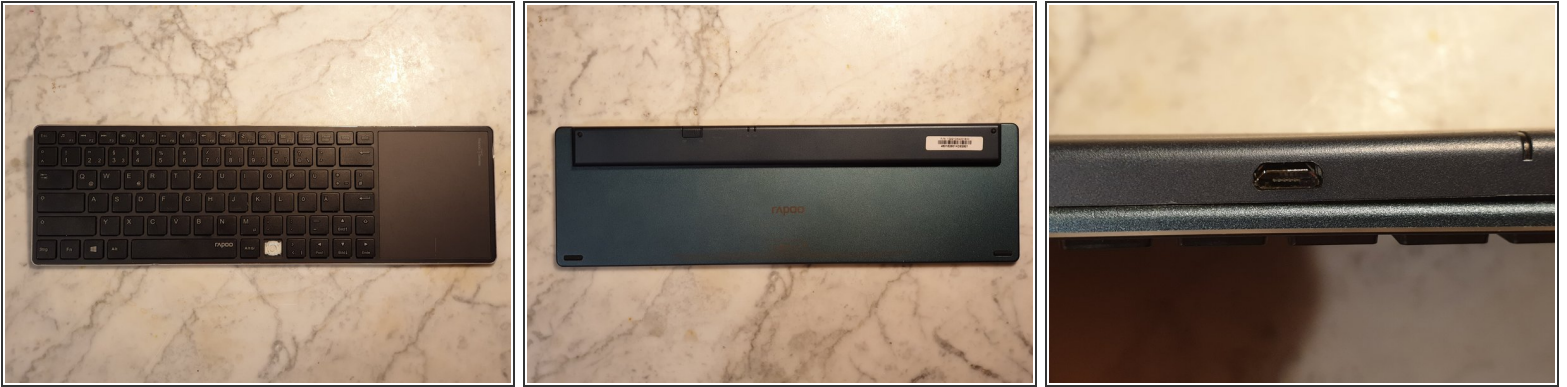
Written By: Vendetti



# INTRODUCTION

Since its considered impossible to repair Rapoo Keyboards i tried and succeeded to at least get to the component which breaks first: The USB Connector Port

## Step 1 — The Keyboard



- The main cause of defect with Rapoo Slimline Keyboards seems to be a faulty USB Connector Port.
- As I couldn't find any conclusive repair instructions but several (violent) teardowns I at least had an idea of approaching a repair.

## Step 2 — Wedges and Spatulas



- Since the keyboard side is superglued (who needs sustainability when you can just buy a new one, duh) it is impossible to access the electronics from the topside.
- The PCB and Battery compartment on the backside is screwed from the inside which makes it virtually impossible to teardown.
- However, the screws are, well.. screwed into thin little poles which can easily be broken with enough (not too much) leverage.
- Begin with prying one corner with the thin prying tool.
- Then slide a more sturdy wedge or in this case spatula underneath the first tool



### Step 3 — wiggle wiggle wiggle



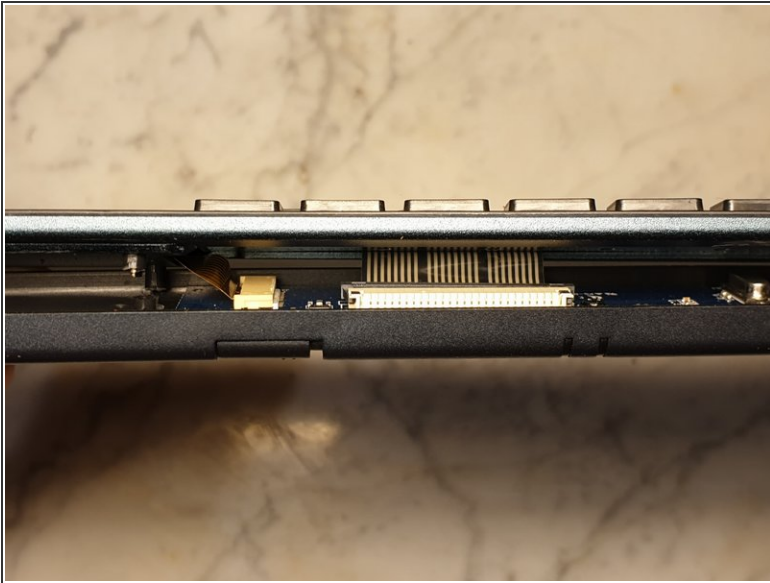
- Now lay down the keyboard somewhere raised and press on the metal part so it won't bend.
- Then you'll need to wiggle in the spatula or tool of choice with an angle since the screwplate has a raised border.
- Then slowly apply force to SLOWLY wedge the plastic plate upwards.

### Step 4 — Screw placement



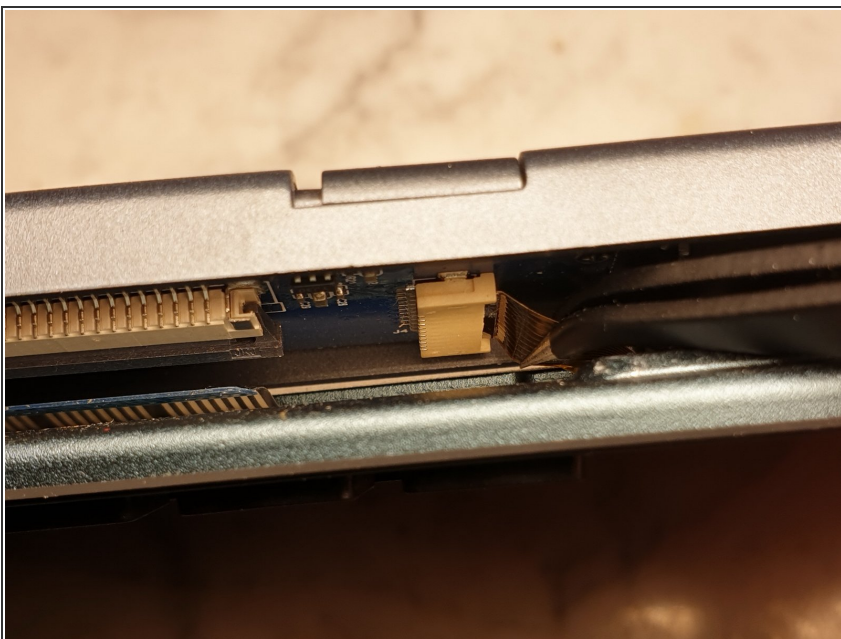
- This particular Keyboard has four screws. One at each end and two in the middle.
- Try to pop the screws at the ends first. Then the last two in the middle. You'll need to pry from each side.

## Step 5 — Cables!



- Be very careful not to yank the cables as you pry the board.
- Best to hold the plastic box in place when working on the last screw.
- Open the flatcable connector by pushing its ends left and right with an flathead screwdriver or similar.

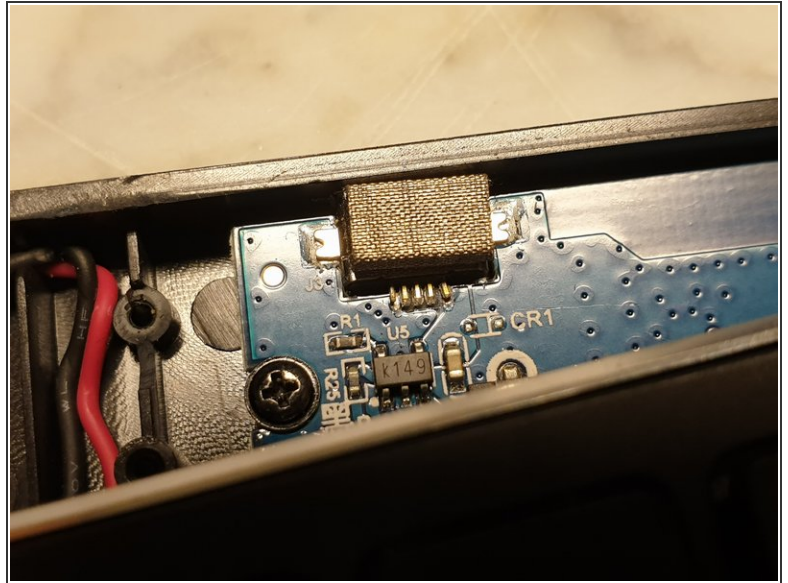
## Step 6 — [OPTIONAL] more cables!



- With this particular keyboard there is another flatcable lingering in the darkness.
- You can try to pull it but youll need excessive force to do so plus it will be very difficult to get it back inside once youll reassemble.



## Step 7 — The USB Port



- Carefully rotate the keyboard ever so slightly to get access to the faulty USB Port.
- And there we have it, that pesky little bugger. Now resolder and reassemble and you're good to go.
- This bigger keyboard has two hooks at the inside of the plastic compartment so you can just snap it back in place.
- With keyboards that don't have such hooks you might need to tape or superglue the parts back together.
- Congratulations, you have (hopefully) successfully repaired the USB Port.