



Korg Volca Mix Teardown

Open the Volca Mix and see what's inside.

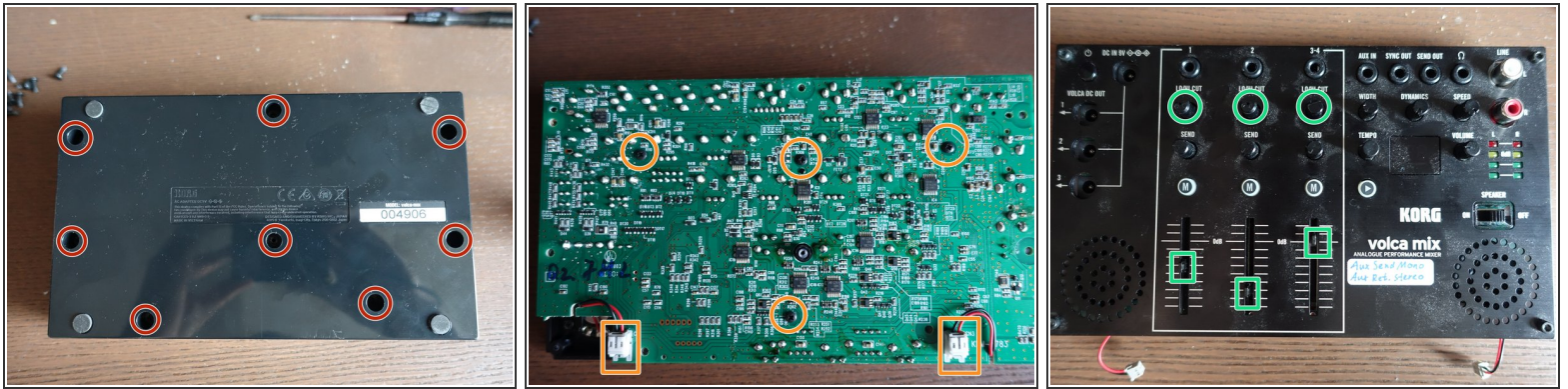
Written By: Christian



INTRODUCTION

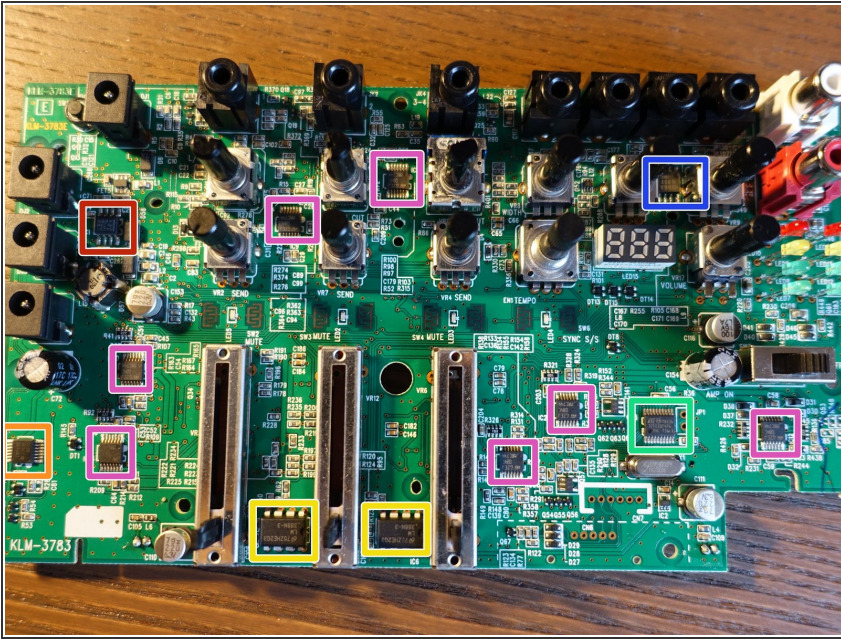
We will open the Volca Mix and see what's inside.

Step 1 — Remove the PCBs from the case



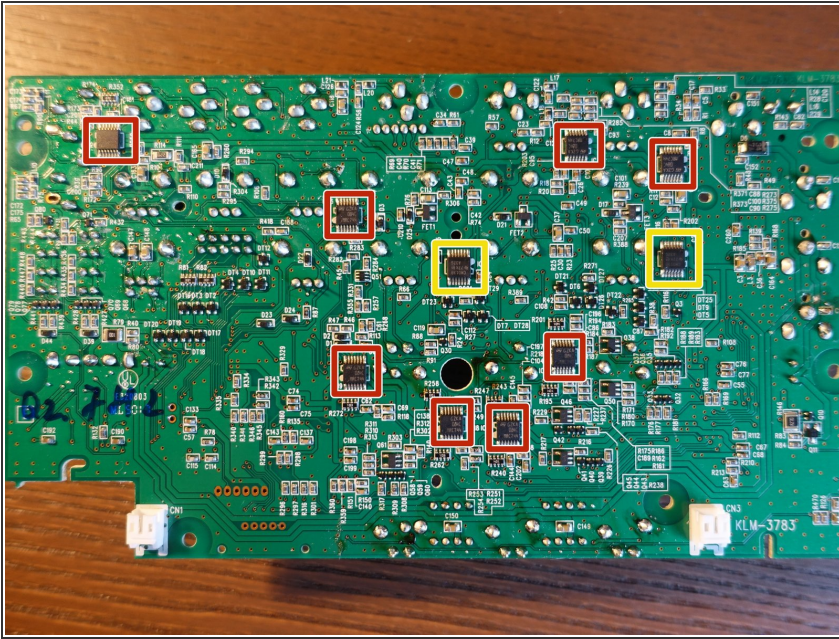
- Remove eight screws.
- Remove the bottom plastic case. You will see the PCB.
- Remove four further screws and unlatch the two loudspeaker-jacks.
- Remove the three Hi/Lo-Cut knobs and the three fadercaps. You can now remove the PCB from the case.

Step 2 — The Top Side



- **Texas Instruments - TPS54231 2A, 28V-Input Step-Down DC/DC-Converter.**
- **Texas Instruments - CD4013B D-Flipflop.** I am not sure if this is correct. The Marking is CM013B/77K G4/A32G
- **National Semiconductor - LM386 Low Voltage Audio Power Amplifier**
- **ST Microelectronics - STM32F030F4 Microcontroller.**
- **JRC - NJM4556A Dual High-Current Operational Amplifier**
- **ST Microelectronics - TL084CDT JFET Quad Operational Amplifier**

Step 3 — The Bottom Side



- **Texas Instruments - CD4013 D-Flipflop**
- **ST Microelectronics - LT084CDT JFET Quad Operational Amplifier**